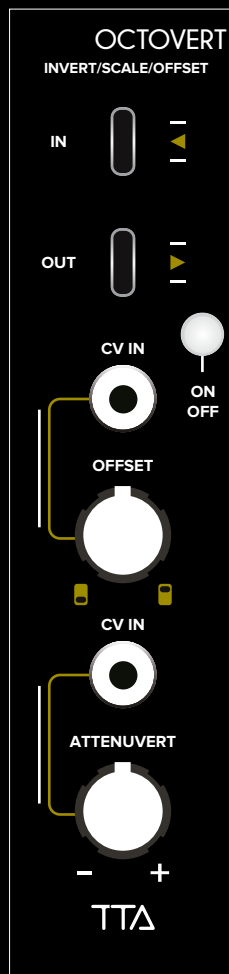


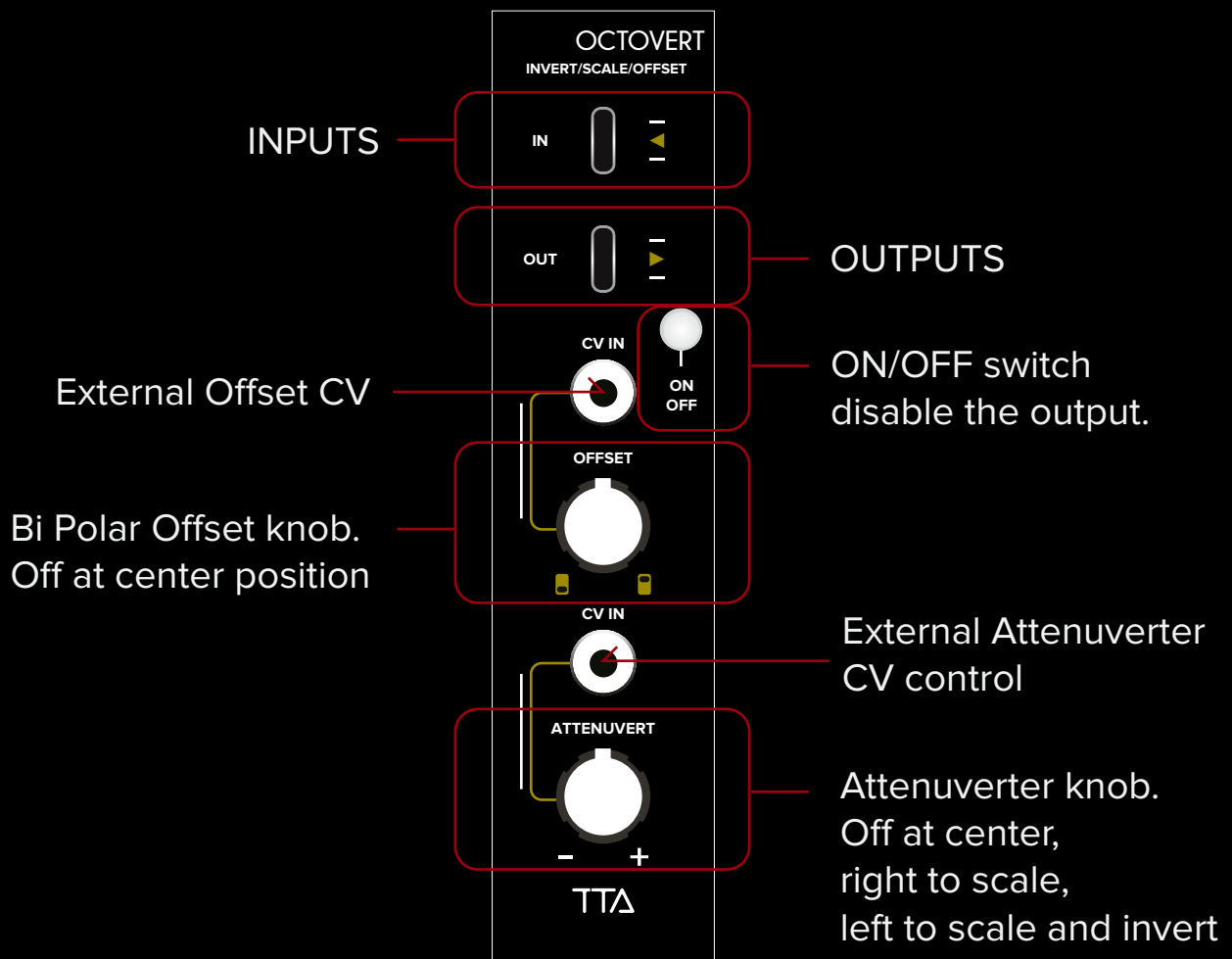
TTA OCTOVERT



OCTOVERT

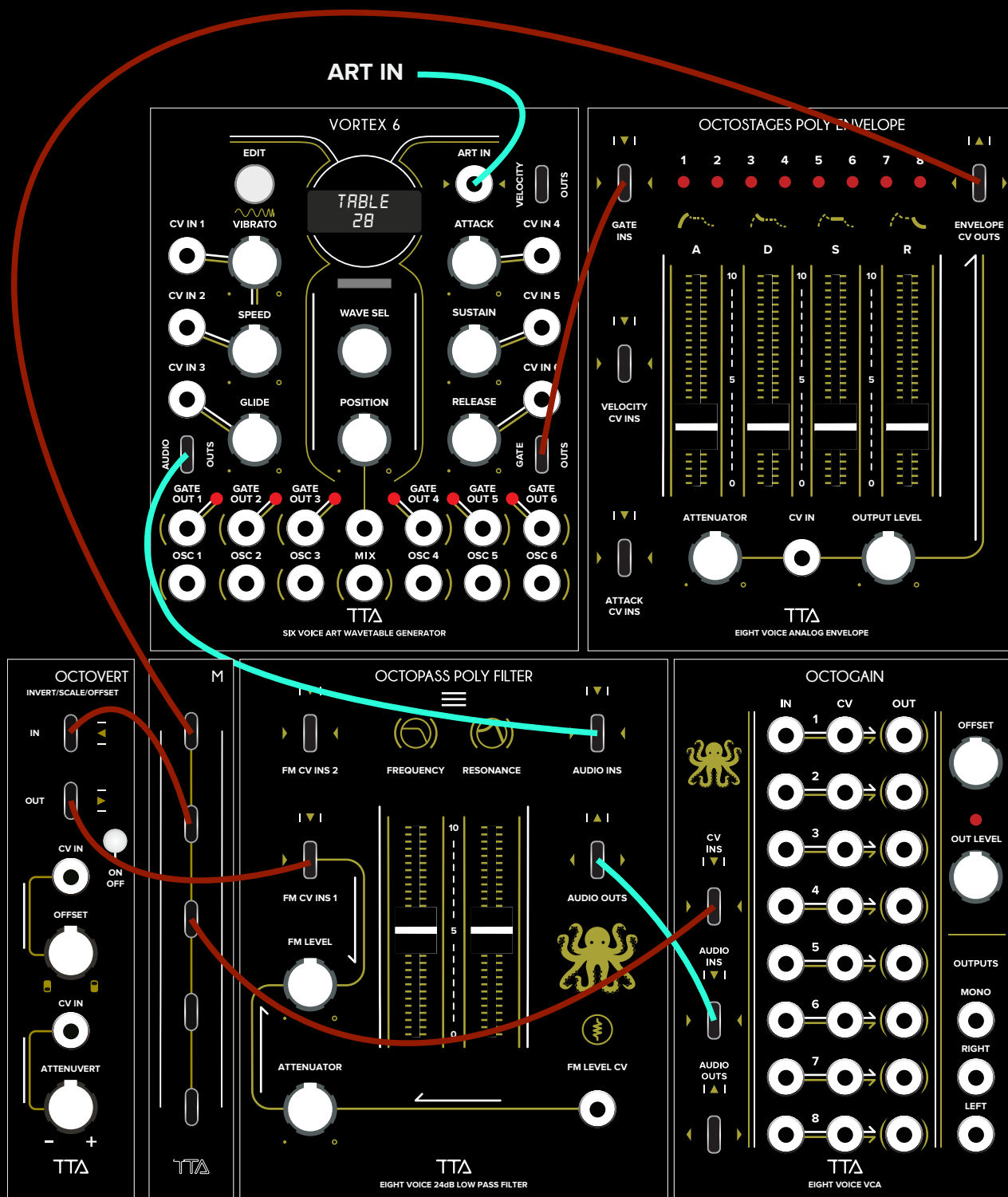
The Octovert is a CV processor capable of scaling, inverting, and offsetting up to eight polyphonic signals. It can also be externally controlled via CV. Its most common applications include inverting envelopes, reversing the direction of CV, and scaling plus offsetting any CV source to precisely fine-tune the modulation sweet spot of the target module.

Panel controls:



In the following patch example, Octovert is used to invert the Octostages envelope before sending it to the Octopass filter. Since the Octostages CV input operates at 0–5V, which is the standard for all Polyphonic modules, we need to adjust Octovert accordingly.

First, we set the ATTENUVERT knob to the left to invert the envelope, turning it into a negative voltage. Then, we turn the OFFSET knob to the right to shift the envelope back into the positive voltage range. Understanding this concept is essential for using Octovert effectively.





Size: 6HP
Depth: 40mm
Power: +12V 18mA / -12V 15mA