

## Full Motion Gas Spring Dual Monitor Arm

(For 17" - 32" Monitors)

KAMMTGASDAB

Safety & Warnings	3
Components	4
Installation	5
Notes	18

# Safety & Warnings

## Before Assembly

- Check and make sure all necessary accessories are included and undamaged.
- Read and understand this manual carefully before installation.

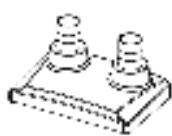
## Warning

- This product contains small items that could be a choking hazard if swallowed. Keep away from children under 3 years old. Adult supervision is required.
- Improper installation, such as using the product for monitors over its load capacity or for any purpose not explicitly specified, may cause damage or serious injury. The brand would not be liable for any damage or injury caused by improper mounting or inappropriate use.

## Caution and Maintenance

- Never allow children to climb, stand, hang or play on any part of monitor or stand.
- This product is intended for indoor use only. Using this product outdoors could lead to product failure and personal injury.
- Check that the bracket is secure and safe to use at regular intervals (at least every 3 months).

# Components



1



2



2-1



2-2



2-3



2-4



3 (x2)



4 (x2)



S



5 (x2)



6 (x2)



B M8 x 100mm



C M8 Wing Nut



D 4mm Allen Key



E 5mm Allen Key



F 6mm Allen Key



MA M4 x 12mm Screw (x8)



MB M4x25mm Screw (x8)



MC Ø4.5mm Washer (x8)



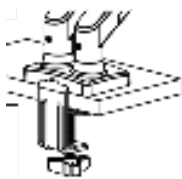
MD 5mm Spacer (x16)

## Note:

Not all parts and hardware included will be used.

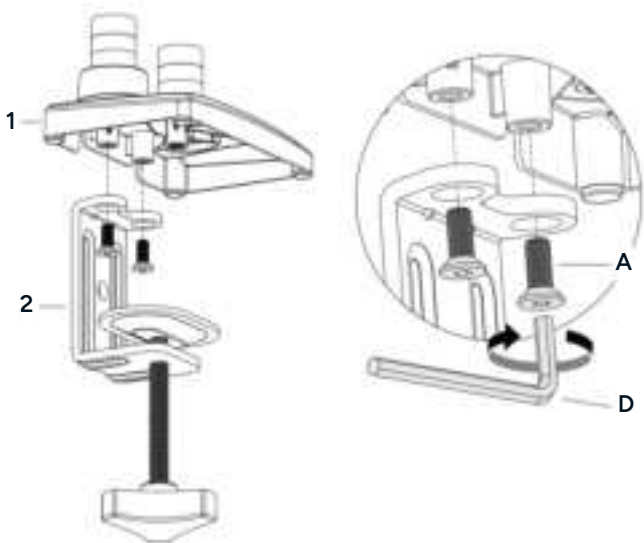
# Installation

## Step 1: Base Installation

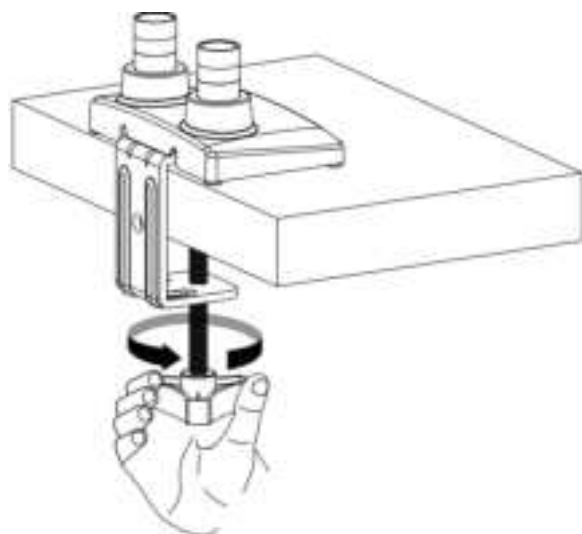
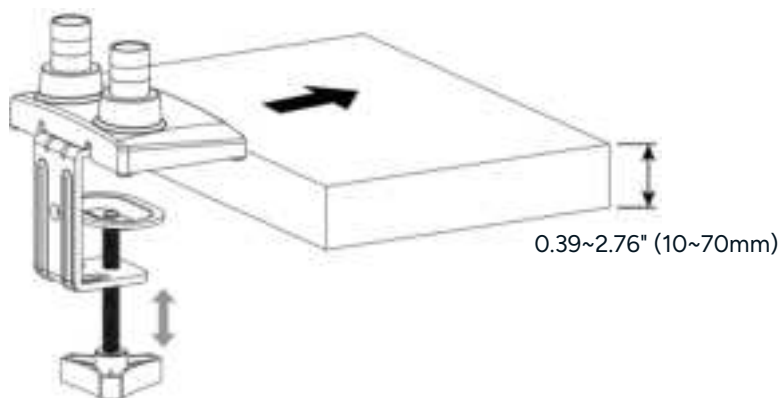


C-clamp desk thickness 10mm ~ 70mm

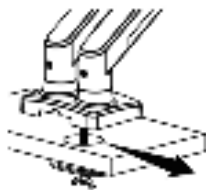
Mount clamp 2 to base 1 with bolts A. Tighten them by using 4mm B-1 Allen key D.



Secure stand to desktop by tightening clamp.

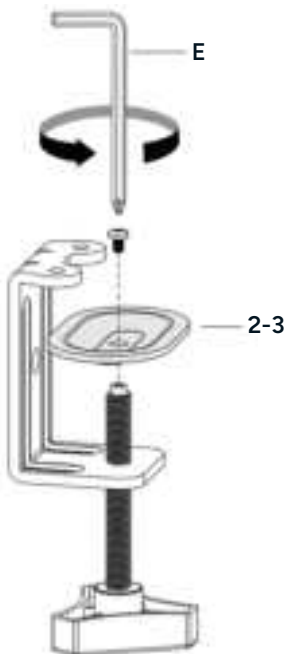


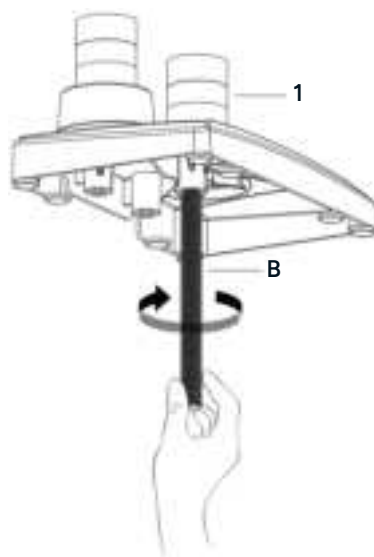
## Grommet Base Installation



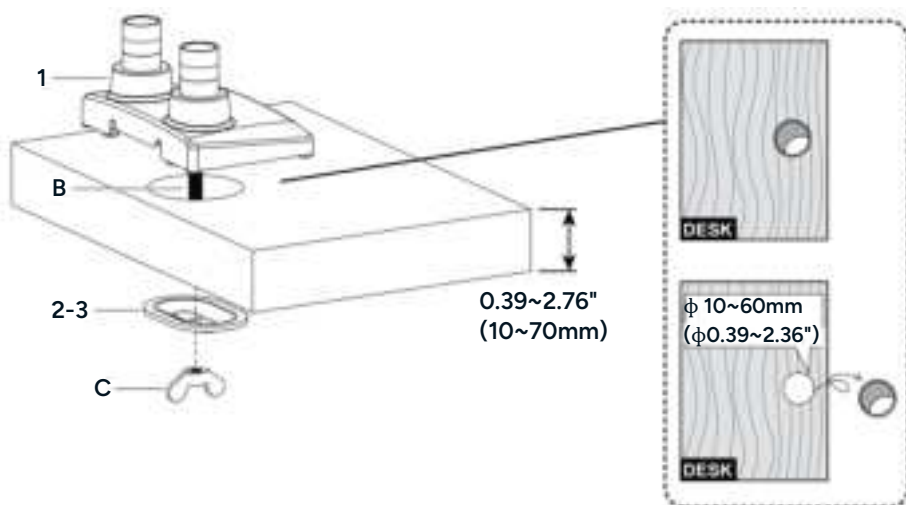
Desk thickness 10mm~70mm (Φ10~60mm)

Detach the clip plate 2-3 from clamp 2 by using 5mm Allen key E. Install the long bolt B to base 1.

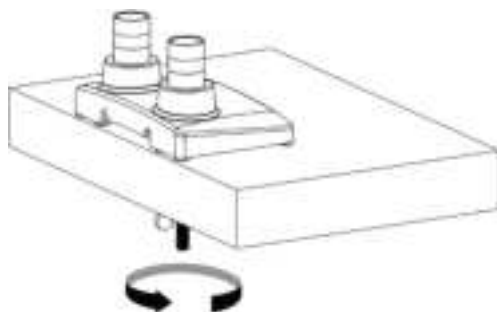




Remove the plastic protector from the hole (if any). Run the long bolt B with base 1 through the clip plate 2-3 and the grommet hole on desktop. Then tighten the wingnut C.

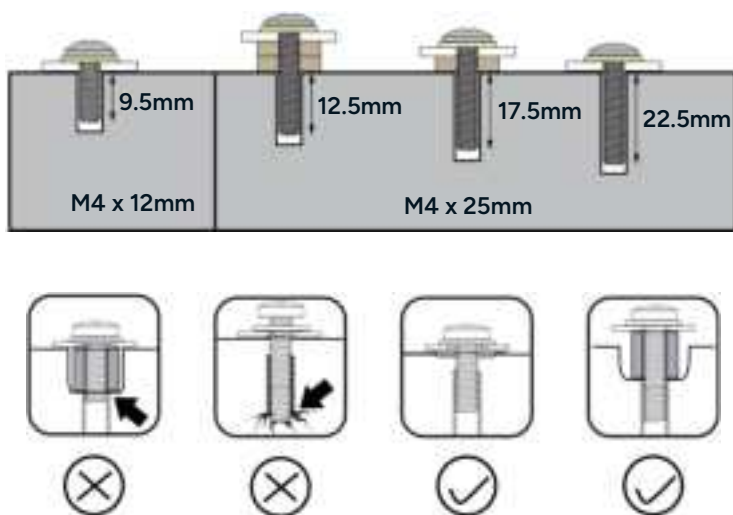






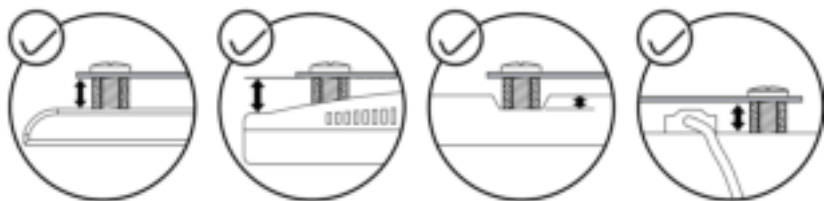
## Step 2: Attach VESA plate to monitor

Select correct monitor screw length.

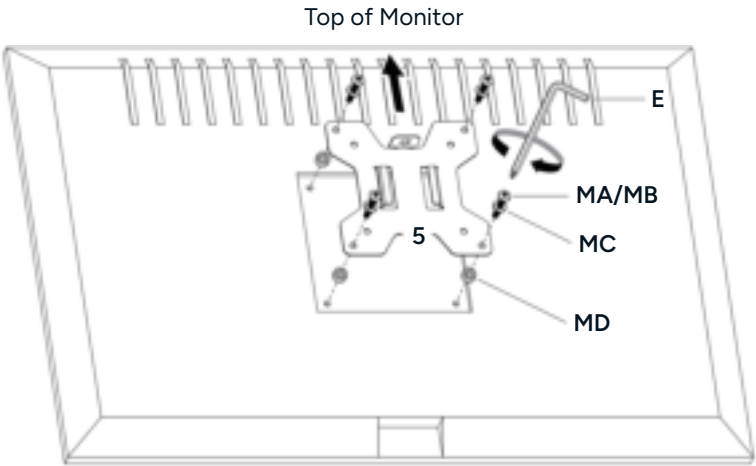


# Which Situation Needs Spacers?

If the screw is too long or the surface is uneven, please choose the appropriate screws, washers and spacers for your monitor.

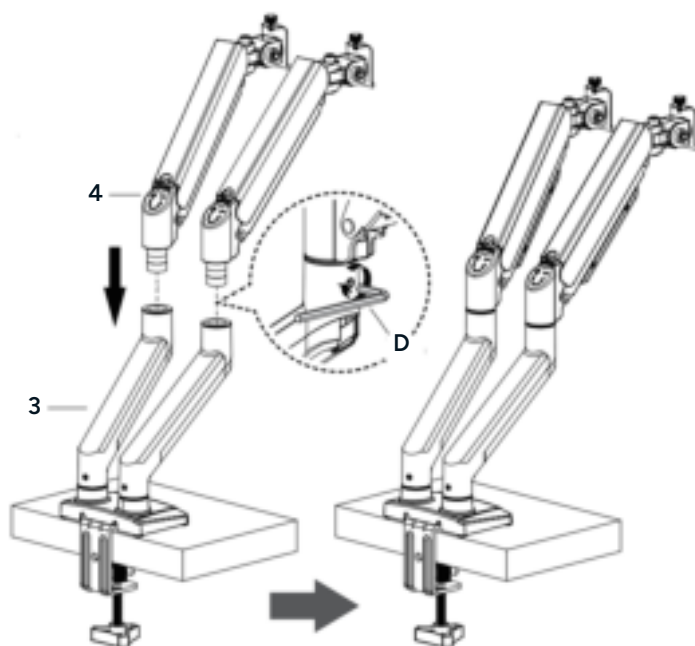
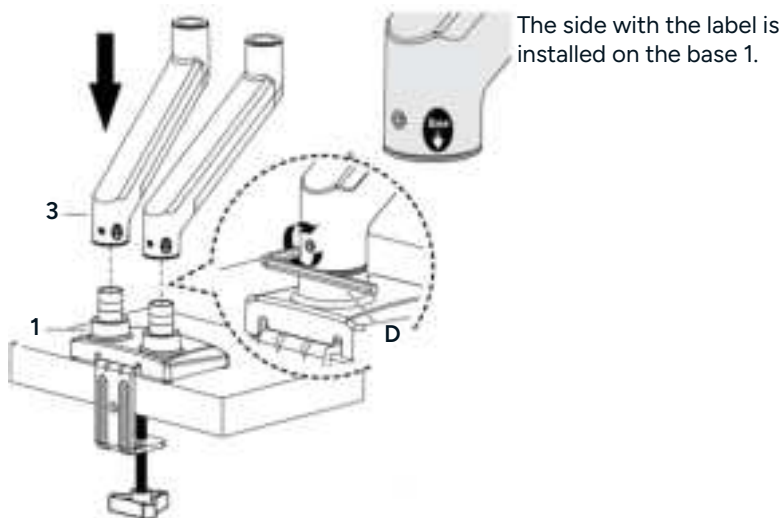


Do not tighten the screws excessively or your monitor might be damaged.

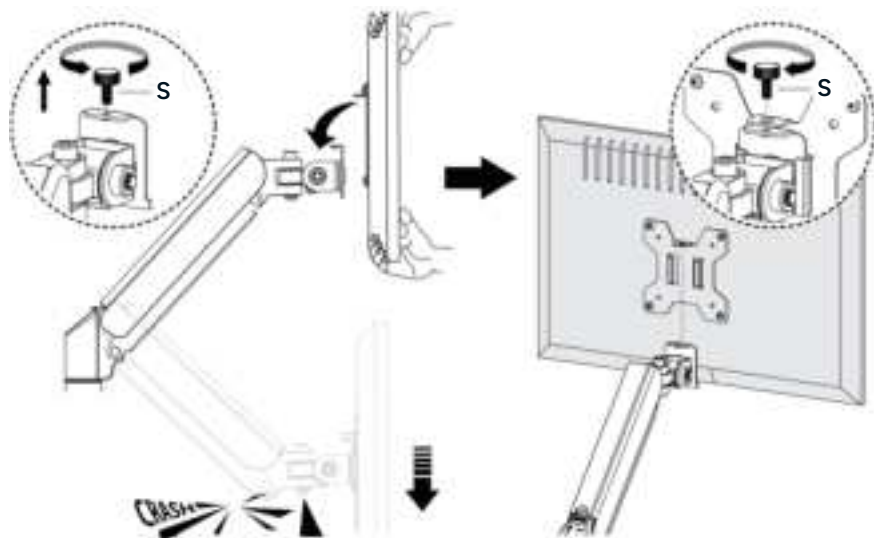


### Step 3: Hang Monitor

Install the lower arm 3 and the upper arm 4 to the base 1. Secure the arm by tightening the inside screw using 4mm Allen key D.



Remove the pre-assembled security bolt S from the arm 4. Slide the monitor onto the head of upper arm 4, install the security bolt S.

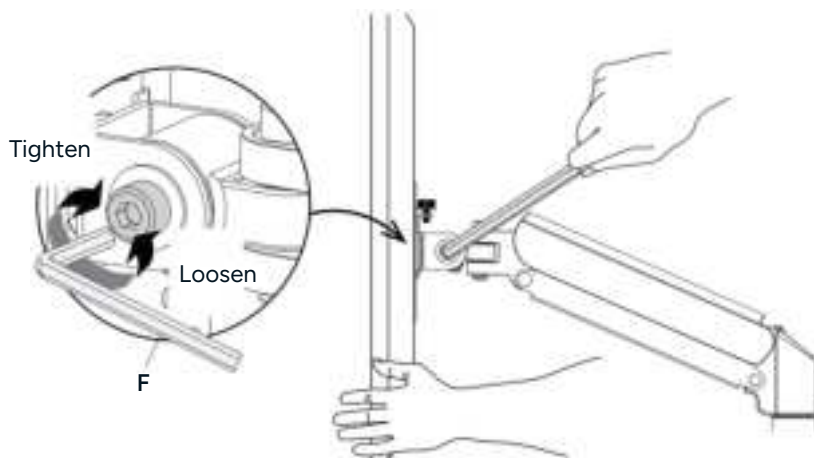


**Important notice:** The initial pressure value of the gas spring is set to a minimum value. So, when the monitor is hung on, you need to hold it with both hands and leave the monitor in a slow and gentle way. Do not let it go down suddenly.

## Step 4: Adjustments (If necessary)

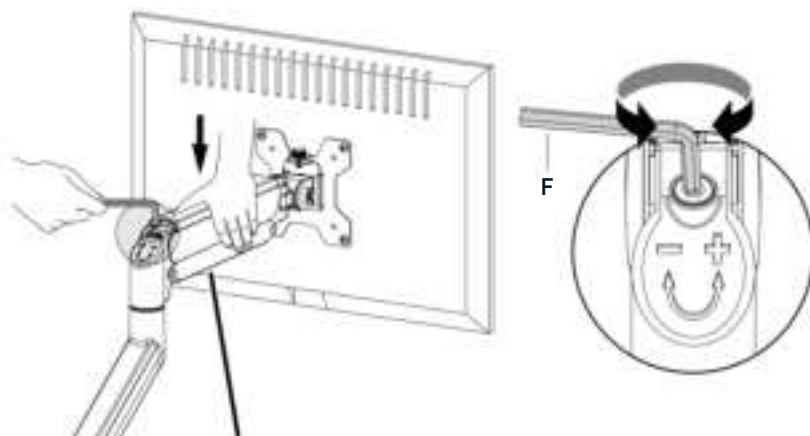
### Tilt adjustment

Loosen the tilting bolt, then adjust monitor to your desired tilt angle. Finally retighten the tilting bolt.



### Tension Adjustment

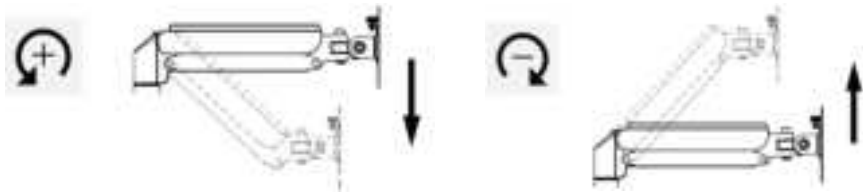
The gas spring is pre-set to minimum tension. Depending on the weight of your actual monitor, you may need to adjust the tension of arm with 6mm Allen key F.



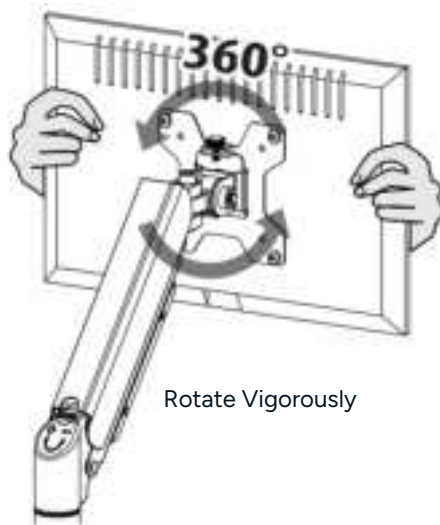
**Note:** Be sure to keep the arm in a horizontal position during adjustment.

**Situation 1:** If arm is falling down Solution: Turn the screw counterclockwise to increase tension

**Situation 2:** If arm is rising up Solution: Turn the screw clockwise to decrease tension.



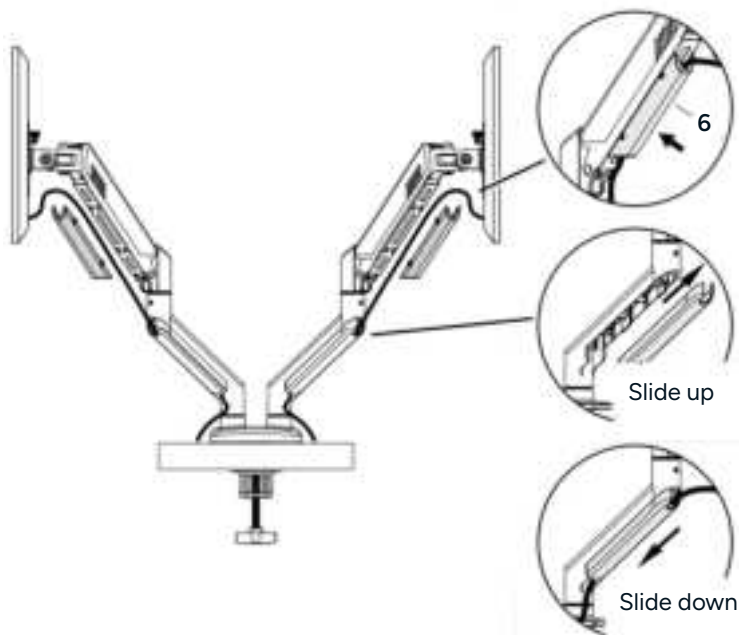
### 360° Rotation



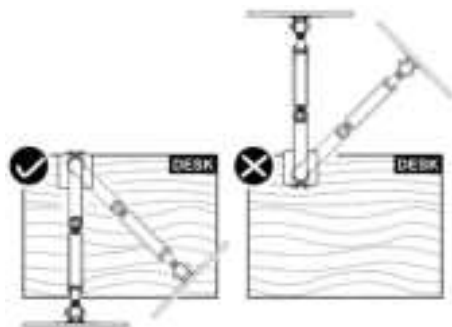
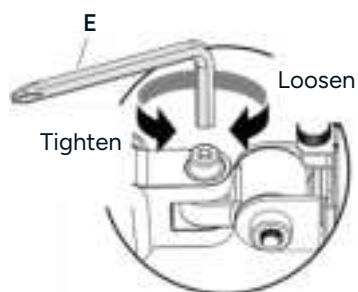
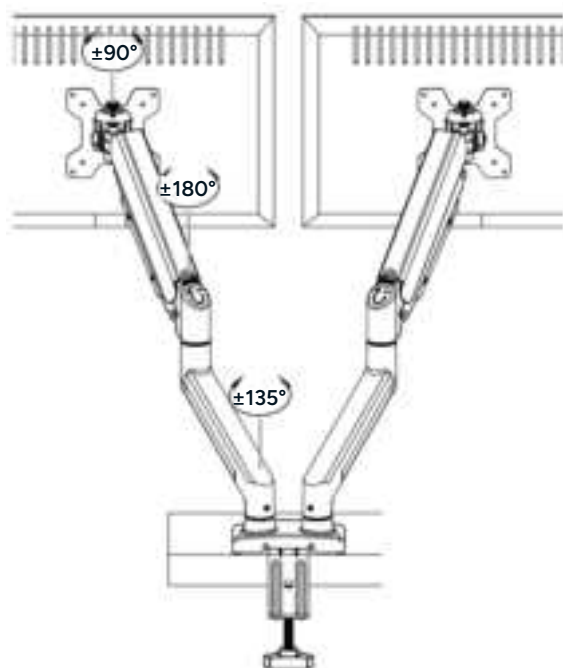
Please attach the monitor first, then hold the sides of it with both hands and rotate vigorously. If that doesn't work out, please do not hesitate to ask for their help.

# Cable Management

Run cables through bottom of the arm.


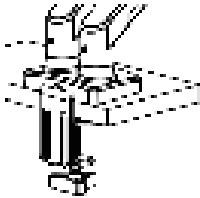
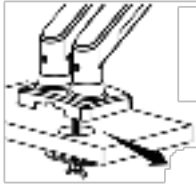


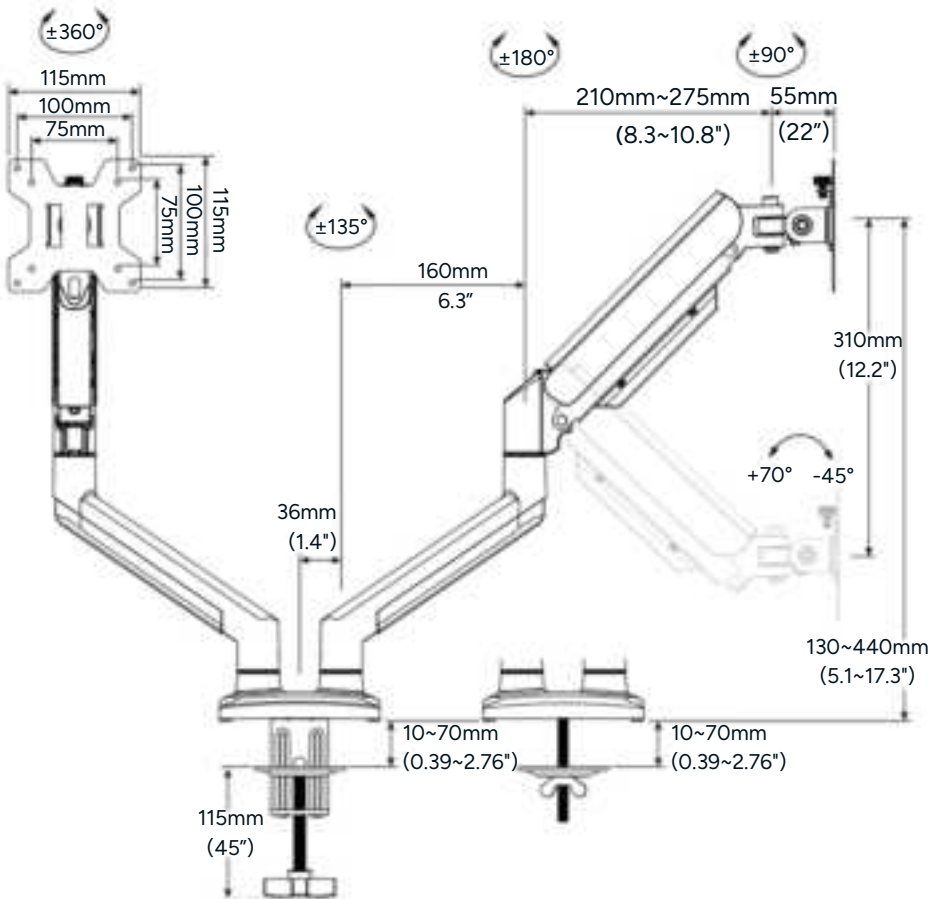
## Swivel adjustment





# Dimensions

		 <p> <math>\phi 10\sim 60\text{mm}</math> </p>
<p> 75 x 75mm (3 x 3")  100 x 100mm (4 x 4") </p>	<p> Desk Thickness 10~70mm  (0.39~2.76") </p>	<p> Desk Thickness 10~70mm  (0.39~2.76") </p>



## Notes

[illegible]

[illegible]

### **Need more information?**

We hope that this user guide has given you the assistance needed for a simple set-up.

For the most up-to-date guide for your product, as well as any additional assistance you may require, head online to **help.Kogan.com**.

