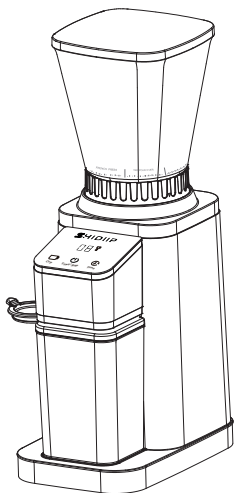


SHIDIIP

— Make a great cup of coffee easier —

INSTRUCTION MANUAL



Conical Burr Coffee Grinder

Model: CG203A

Read this manual thoroughly before using and save it for future reference.

CONTENTS

■ IMPORTANT SAFEGUARDS	1
■ WARNING	2
■ Introduction - Elements & Parts	3
■ Product Parameters & Specification	4
■ How to Assembly & Setup	4
■ How to Use	5
■ Quick Instructions	6
■ Grinding Settings	7
■ Care and Cleaning	7
■ Troubleshooting	9

IMPORTANT SAFEGUARDS

Before using the electrical appliance, the following basic precautions should always be followed including the following:

1. Read all instructions.
2. Before using please check that the voltage of wall outlet correspond to the one shown on the rating plate.
3. Do not operate any appliance with a damaged cord or plug or after the appliance malfunctions, or is dropped or damaged in any manner. Return appliance to the nearest authorized service facility for examination, repair or electrical or mechanical adjustment.
4. If the supply cord is damaged it must be replaced by the manufacturer or a authorized service agent or a qualified technician in order to avoid a hazard.
5. Switch off the appliance and disconnect from supply before changing accessories or approaching parts that move in use.
6. Do not let cord hang over edge of table or hot surface.
7. Do not immerse the motorized base in liquid, or place in dishwasher.
8. Close supervision is necessary when your appliance is being used near children or infirm persons.
9. Ensure fingers are kept well away from the moving parts.
10. Do not remove the lid until the blade has completely stopped.
11. Do not attempt operation without the lid being in place.
12. The use of attachments not recommended or sold by the manufacturer may cause fire, electric shock or injury.
13. Check the bean box for the presence of any foreign objects before using.
14. To protect against risk of electrical shock, do not put the Coffee Grinder in water or other liquid.

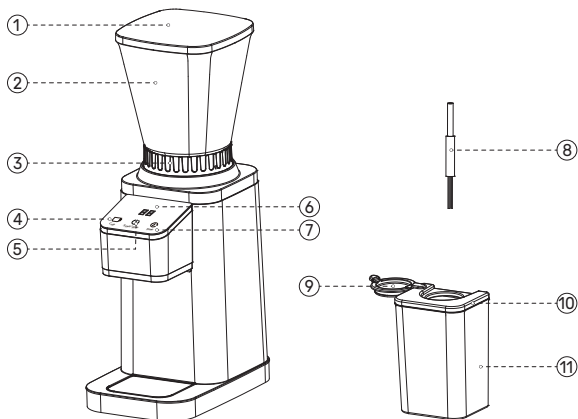
15. Appliance can be used by persons with reduced physical, sensory or mental capabilities or lack of experience and knowledge if they have been given supervision or instruction concerning use of the appliance in a safe way and understand the hazards involved.
16. Children shall not play with the appliance.
17. This appliance shall not be used by children. Keep the appliance and its cord out of reach of children.
18. Misuse may cause potential injury.
19. Care shall be taken when handling the sharp cutting blades and during cleaning.
20. Turn the appliance OFF, then unplug from the outlet when not in use, before assembling or disassembling parts and before cleaning. To unplug, grasp the plug and pull from the outlet. Never pull from the power cord.
21. Make sure appliance is OFF when not in use, before putting on or taking off parts, and before cleaning.
22. Avoid contacting moving parts.
Do not operate the appliance for other than its intended use.
23. Do not use outdoors.

WARNING

1. To prevent the risk of fire or electric shock, do not remove any service cover of this appliances. There are no user serviceable part inside the conical burr grinder.
2. Only authorized personnel can repair the conical burr grinder.
3. Read all of the instructions in this manual carefully before your first use of this appliance.

INTRODUCTION

Elements & Parts



① Bean Hopper Lid

③ Grinding Settings/Grinding Setting Knob

⑤ START/STOP Button

⑦ Time Select Button

⑨ Sealing Cover

⑪ Grinding Chamber

② Bean Hopper

④ Cup Select Button

⑥ LED Panel

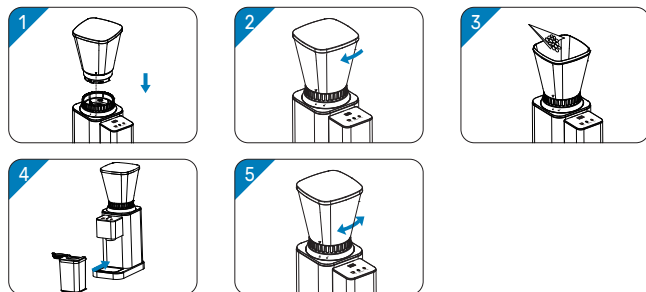
⑧ Cleaning Brush

⑩ Grinding Chamber Lid

Product Parameters & Specification

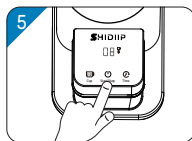
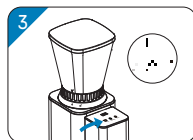
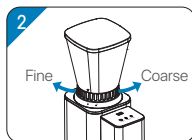
Model	CG203A
Power Supply	120V~60Hz
Rated Power	150W
Bean Hopper Capacity	8.9oz
Grinding Chamber Capacity	3.6oz
Net Weight	4.6 lb
Dimensions	6.7"4.3"13.8 in

How to Assembly & Setup



1. Install the Bean Hopper into proper position of the appliance. Make the positioning ribs of the Bean Hopper aligning with the grooves at the main body. The Bean Hopper is locked when the icon "▼" on the Bean Hopper aligns with the icon "🔒" on the ring of main body. The Bean Hopper can be removed when the icon "▼" on the Bean Hopper aligns with the icon "🔓" on the ring of main body.
2. Rotate the Bean Hopper at clockwise direction to lock it.
3. Open the lid, and you can add coffee beans into the Bean Hopper.
4. Remove the sealing cover and place the Grinding Chamber to proper position.
5. Adjust the grinding size by rotate the Grinding Setting Knob.

How to Use



1. Plug the power cord into a power outlet, the LED Panel and START/STOP Button will be light on.
2. Rotate the Grinding Size Knob to get the size you prefer, from the size ranging from 1 (fine) to 48 (Coarse). Refer to "Grinding Setting" chart.
3. Press the Cup/ Select Button to choose your wanted grinding cups. Press the Time Select Button to choose your wanted grinding time.
4. Press START/STOP Button to start grinding. Grinding will automatically stop while the grinding is done.
5. During grinding, press START/STOP Button, to pause the grinding.

NOTE:

- The Bean Hopper could not be used for long term storing coffee beans and the Grinding Container could not be used for long term storing ground coffee. Please empty the coffee beans in the Bean Hopper and empty the ground coffee in the Grinding Chamber after use.

CAUTION:

- Do not operate the grinder for continuous grinding longer than 3 minutes as it could cause overheating of the appliance. After 30 minutes continuous grinding, allow the appliance to cool down for at least 30 minutes before next grinding.

Quick Instructions

The coffee grinder can get you a large range of coffee beans particle size for choosing. There are total 48 grinding degrees can be adjusted from espresso(fine), drip coffee, mocha pot(medium) to french press(coarse). You can choose the number of cups from 2 to 12 cups as you want, then you will get your wanted amount of coffee beans grinded automatically.

1. Press and hold the "Cup" button for 2 seconds, the screen will repeatedly display 2-4-6-8-12 cups in turn. You can press and choose your wanted grinding cups.
2. Press and hold the "Time" button for 2 seconds, the screen will repeatedly display grinding time from 01 to 40 seconds for your setting choice.
3. 1) In standby mode, long press the "Start/Stop" button for 3 seconds to enter the sleep mode.
2) In standby mode, if no any operations within 60seconds, it will enter into sleep mode.
Press any button to restore standby mode.
4. Press the "Cup" and "Time" buttons at the same time for 3 seconds, the machine will start to work. The screen will display and countdown 60 seconds, after that it will stop working automatically.
5. Locking system of bean hopper : When the bean hopper is not installed in place and not locked successfully, the machine will not work.

Grinding Settings

Your Coffee Grinder has 48 unique grind size settings that are suitable for a range of brewing methods, from the finest setting for Espresso to the coarsest setting for French press. By adjusting the Cup Selection Knob, you can choose from 2 to 12 cups of coffee as desired.

Coffee Type	French Press	Drip Coffee	Espresso
Grind Size	Coarse	Medium	Fine
Grind Setting	32-48	16-32	1-16
Cup Selection	2-12 Cups	2-12 Cups	2 Cups
Max. Grinding Time	40S	40S	10S

NOTE:

- This chart is for reference only. Your experiment with different grinding size, dose and time setting is important for you to achieve your desired taste.
- For Espresso, please set the Cup Selection Knob at "2 Cups".

Care and Cleaning

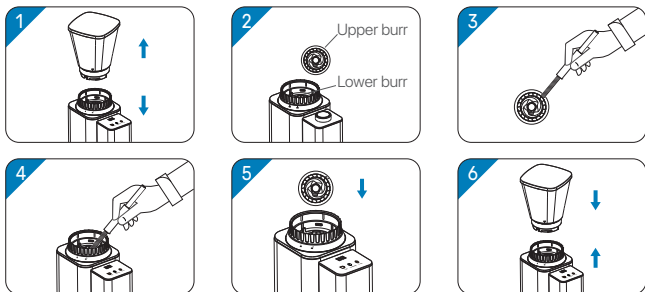
• Cleaning the Grinder



1. The Bean Hopper and Grinding Chamber can be cleaned with warm, soapy water, then rinse with clean water, and dry thoroughly.
2. The main body can be wiped with a wet soft cloth, then dried by a soft dry cloth.

• Cleaning the Burrs

It is recommended to clean the burrs regularly to keep the best grinding performance, and prevent the burr channel from blocking.



1. Empty the Bean Hopper and remove it from the grinder.
2. Remove the upper burr.
3. Clean the upper burr with the brush.
4. Clean the lower burr and remove coffee residue with the brush.
5. Install the upper burr.
6. Install the Bean Hopper.

CAUTION:

- Unplug the Coffee Grinder before cleaning.
- To avoid damage, never wash or immerse the main body of Coffee Grinder, burrs, or power cord in water, or place in the dishwasher.
- Do not use water or wet cloth to clean the burrs.

Troubleshooting

Problem	Solution
Grinder does not run.	Properly Plug the Coffee Grinder into a power outlet. The appliance may be overheated. Cool down for 30 minutes then plug it to operate.
Grinder is running but coffee beans are not grinded.	The burrs require cleaning or are worn. Refer to "Care and Cleaning" section to clean the burrs.
If Grinder stops abruptly during operating.	Immediately turn off / plug off the Coffee Grinder. Coffee beans, may be jammed in the burrs. Refer to "Care and Cleaning" section to clean the burrs. The powder chute may be clogged. Refer to "Care and Cleaning" section to clean the chute.

NOTE:

- If you couldn't solve the problem, please contact us: support@shidiip.com

Environment Friendly Disposal



You can help protect the environment.
Please remember to respect the local regulations: hand in the non-working electrical equipment to an appropriate waste disposal center.