

Thank you for choosing Uahpet.  
Please read the directions before use.  
Glad to be of service, please feel free to contact us  
anytime.



Scan QR code to get operating instruction manual



uah

# ZERO Wireless Pet Fountain User Manual



## Product Description



## What's included

- |                     |                        |
|---------------------|------------------------|
| Water Bucket Set ×1 | External Water Pump ×1 |
| TYPE-C USB Cable ×1 | User Manual ×1         |
|                     | Filter                 |

## How to install



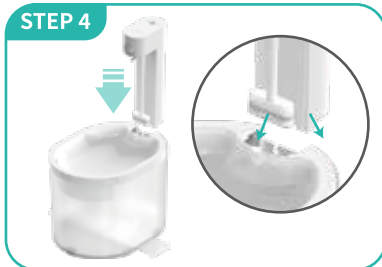
Install Filter



Insert Filter into Water Bucket



Attach the Tray



Fully Insert Water Pump

## Product specifications

Model: UYSJ02

Input voltage: DC 5V

Input current: 2A

Battery: 5000mAh

Filter: Quartz Sand, Coconut Activated Charcoal, KDF, Ion Exchange Resin

Color: White

Weight: 1.47 lb

Size: 9.01" × 6.33" × 7.2"

Material: ABS+PP+Silica gel

Waterproof level: IPX6


Capacity: 70oz/2L

## Features




ON/OFF Button

### To Power On:

Hold the “” button for 3 seconds until you hear a short “beep” sound to turn on the fountain.

### To Power Off

When the fountain is on, hold the “” button for 3 seconds until you hear a long “beep” sound to turn off the fountain.

### Switch Modes

When the fountain is on, quickly press the button to switch between modes. The indicator light to each mode will light up when you switch and you will hear a short “beep” sound.



### Timer Mode Indicator Light

Blue light is on when the timer mode is working.

Blue light is off when the timer mode is standing by.

### Function

The fountain will dispense water automatically every 15mins.



### Sensor Mode

The fountain will dispense water automatically when the sensor detects the pet.

### Sensor Mode Light

Blue light is on when the sensor mode is working.

Blue light is off when the sensor mode is standing by.

### Battery Light:

Red light flashing: low battery indication

Blue light flashing: charging

Blue light steady burning: full charge



## Recommendations

- We recommend that replacing the filter and filter sponge once a month, use with genuine please. [www.uahpet.com](http://www.uahpet.com)
- Please use a clean cloth to wipe the external pump body. Please turn off the power and the fountain before cleaning the water bucket.
- Before initial use or after replacing the filter, please rinse and wash the filter.
- For best results, please clean the water bucket, drinking tray, filter and filter head regularly.
- When the fountain is charging or plugged into a power source, please keep your pet away from the wires to avoid electrical hazards from chewing.
- Please keep the fountain horizontal while in use. Please do not knock it over.
- For indoor use only. Do not expose this product to sunlight.
- Please make sure children have adult supervision when operating this product.
- It's recommended to fully charge before first use & once every 3 months to prolong its life.
- Input voltage: DC 5V ; Input current: 2A.