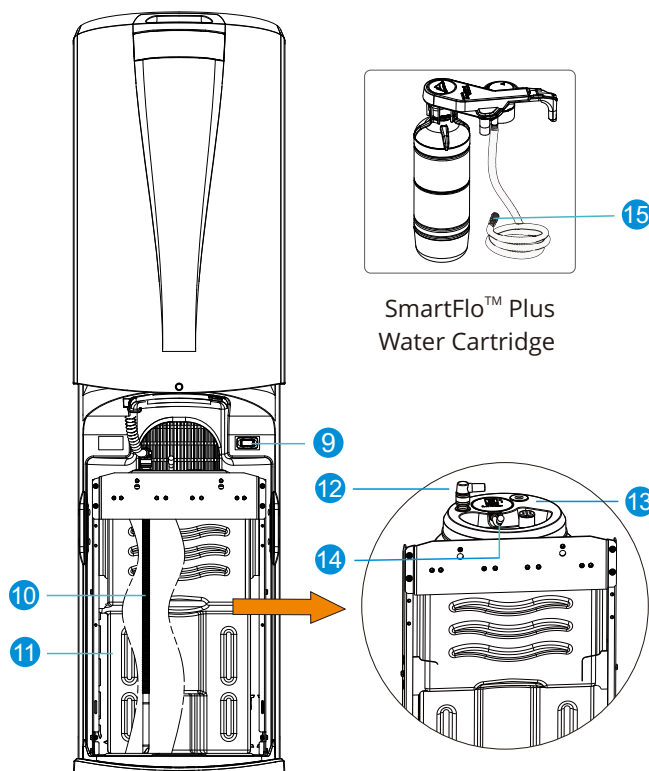


- | | |
|-----------------------------|-------------------------|
| 1 Child Resistant | 5 SmartFlo™ Plus Change |
| 2 Hot water lever | 6 Water Outlet |
| 3 Cold Water Lever | 7 Drip Tray and Cover |
| 4 Low Water Level Indicator | 8 Dispense Light |

This unit dispenses water at temperatures that can cause severe burns. This appliance is not intended for use by persons (including children) with reduced physical, sensory or mental capabilities, or lack of experience and knowledge, unless they have been given supervision or instruction concerning use of the appliance by a person responsible for their safety.. Children should be supervised so that they do not play with this appliance

EXTERNAL PARTS OF THE AUTOFILL STORM POU

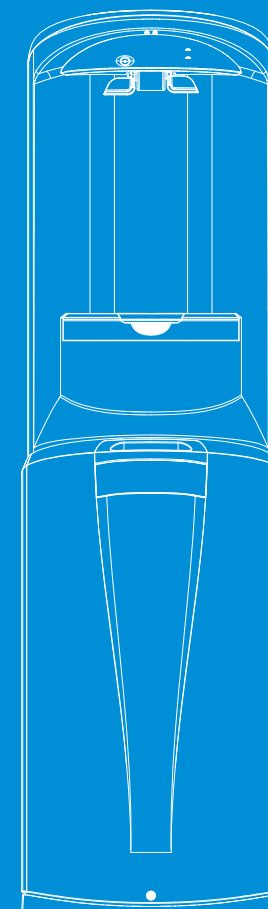


- | | |
|-------------------------|----------------------------|
| 9 Hot Tank Power Switch | 13 Water Reservoir Cover |
| 10 Corrugated Tube | 14 Water Supply/Water Line |
| 11 Water Reservoir | 15 Blue Fitting |
| 12 Blue Elbow Fitting | |

The customer acknowledges that water, like other liquids, can cause damage to surfaces. The customer takes full responsibility for placing the cooler within a residence or business, and acknowledges that failure to address drips, leaks or spillages is at the customer's risk. Note: If there are technical questions or problems customer should contact their local water company or water dispenser supplier.

AUTOFILL STORM POU Water Cooler

Quick Start Guide



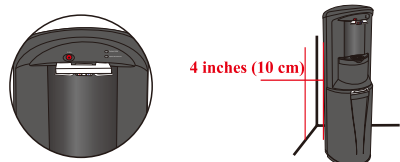
ENSURE THE COOLER STANDS UPRIGHT FOR 24 HOURS BEFORE PLUGGING IT IN.

PLEASE READ THESE INSTRUCTIONS COMPLETELY BEFORE SETTING UP THE COOLER FOR OPERATION.

DOC-C100226 Rev0724

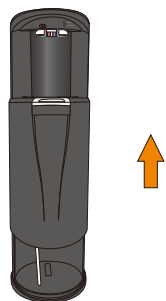
STEP1

Remove all packaging / shipping materials from the dispenser (including dispense lever spacers). Position water dispenser so that the back of the unit is a minimum of 4 inches away from the wall to ensure proper ventilation, and is within 5 feet of an available receptacle (115Volts AC). Ensure the dispenser stand upright for 24 hours before proceeding with these setup instructions. **DO NOT** plug the cooler into a electrical service at this time.



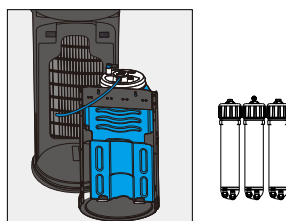
STEP2

Open the bottle compartment by lifting upwards on the door window.



STEP3

Install filters (not provided) onto metal bracket with provided mounting holes



STEP4

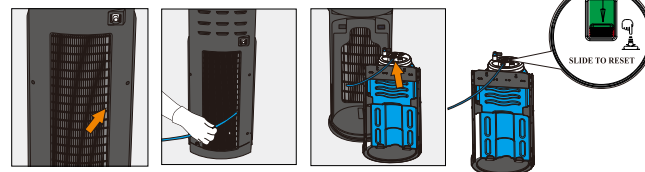
Connect mains water supply to the cooler using the provided 1/4 inch supply tube. 1/4 inch supply tube can be routed through the condenser bushing, provided, and affixed to the condenser (upper right side from back of cooler view). If using filters this line will connect to the filters before routing to the reservoir white cap fitting.

Note: Water inlet pressure minimum 20PSI(0.138MPa), Maximum 80PSI(0.552MPa), where pressure exceed 80PSI(0.552MPa) a Pressure reducing valve must be fitted.

Note: Ensure tubing is positioned accordingly to prevent damages(i.e.kink or cut)

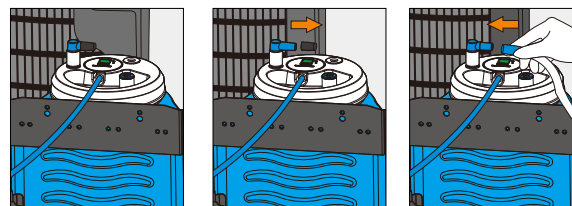
Note: In the event a filtration system is not installed, the 1/4 inch water line from the mains water connection can be connected directly to the water line of the POU system.

Ensure the indicator is in the GREEN position, if indicator shows RED, slide the lever forward to reset.



STEP5

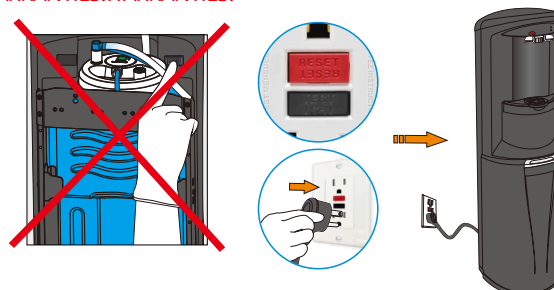
Carefully push the reservoir adaptor corrugated tube through the reservoir cover until the blue elbow is flush with the reservoir cover and the corrugated tube end is touching the bottom of the reservoir. Locate the SmartFlo™ Plus water supply tube dangling from the mid shelf in the lower compartment, remove the red protective silicone cap from the blue fitting on the end of this tube, connect the corrugated tube to the reservoir adaptor blue elbow as shown below. Push firmly with a slight turning action to make a tight connection between the two fittings.



STEP6

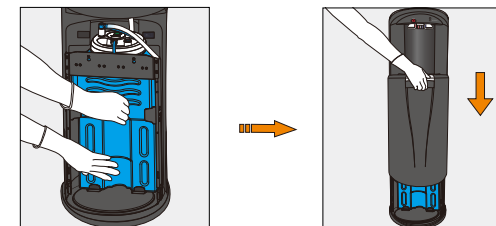
With the POU Assembly positioned outside of the cooler compartment on a flat surface of the floor, turn on water supply and check for leaks. Be sure the reservoir is filling with water. **DO NOT** turn on the Hot Tank Power Switch, located at the upper right side of the open compartment area, insure it is in the off position. Plug unit power cord into a electrical outlet

Note: To provide additional protection from the risk of shock, this unit **MUST** be connected to a ground fault circuit interrupter (GFCI) outlet at all times. **DO NOT USE AN EXTENSION CORD TO SERVICE ELECTRICAL POWER TO THIS UNIT. USE OF AN EXTENSION CORD MAY RESULT IN PERSONAL INJURY AND OR PROPERTY DAMAGE, AND WILL VOID ALL MANUFACTURER WARRANTIES.WARRANTIES.**



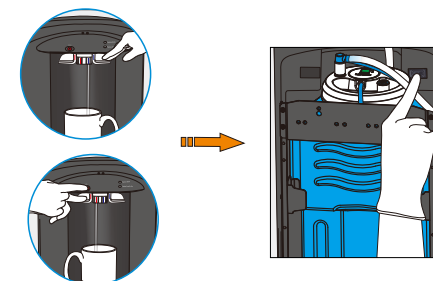
STEP7

Once the blue reservoir of the POU Assembly is 1/2 full, or more, with water, slide the POU Assembly into cabinet and close the lower door. The system will start to automatically prime the water system. this will take approximately 90 seconds. you will hear the SmartFlo™ Plus water pump running at this time. If you do not hear the pump running, confirm that the unit is plugged into an active power supply.



STEP8

After the SmartFlo™ Plus pump stops priming, confirm that the dispenser is ready for service by dispensing 2 to 3 oz of water by placing a cup or container below the dispense nozzle and depress the hot and cold levers, separately, for a few seconds each. The Hot Tank Power Switch can now be turned to the ON position.



STEP9

For best results, do not draw water from the unit until it has had time to heat and chill the water to optimum temperatures. This may take 1-2 hours depending upon room temperature.

