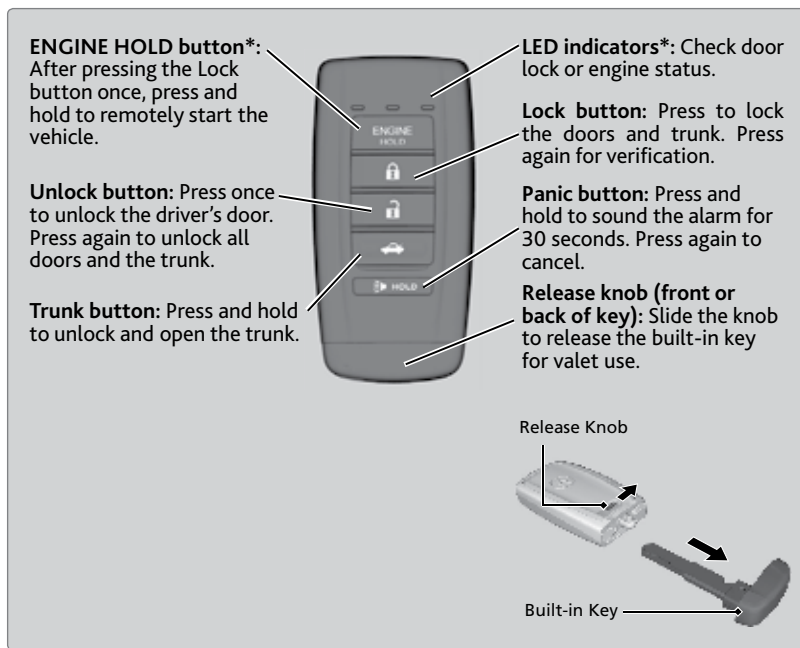


VEHICLE CONTROLS

Learn about the various controls necessary for operating and driving the vehicle.

Using the Remote Transmitter

Lock or unlock the doors and trunk.



NOTICE

Leaving the remote transmitter in the vehicle can result in theft or accidental movement of the vehicle. Always take it with you whenever you leave the vehicle unattended.

**if equipped*

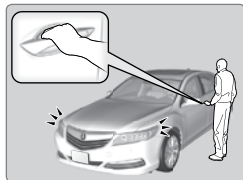
Keyless Access System

When you carry the remote transmitter (for example, in a pocket or purse) and it is outside the vehicle and within range (about 32 inches or 80 cm), you can lock or unlock the doors and trunk without handling the transmitter.

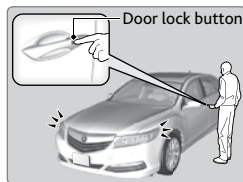
■ Unlocking/Locking the Doors

To unlock: Grab the driver's door handle when the vehicle is off to unlock the driver's door.

Grab the front passenger's or rear door handle when the vehicle is off to unlock all doors.

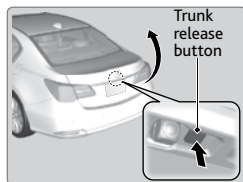


To lock: Press the door lock button on the front or rear door handle when the vehicle is off. If the remote transmitter is inside the vehicle, the doors will not lock.



■ Opening the Trunk

Press the trunk release button under the trunk handle to unlock and open the trunk. The vehicle can be on or off.



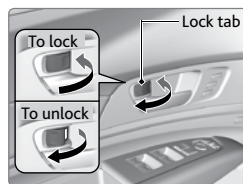
Door Operation from Inside the Vehicle

Use these methods to lock or unlock the doors.

■ Using the Lock Tab

To unlock: Pull the lock tab rearward. When you unlock the door using the lock tab on the driver's door, only the driver's door will unlock.

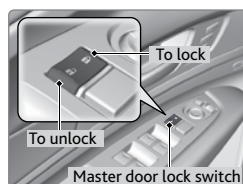
To lock: Push the lock tab forward. When you lock the door using the lock tab on the driver's door, all the other doors lock at the same time.



■ Using the Master Door Lock Switch

To unlock: Press the unlock side of the switch to unlock all doors.

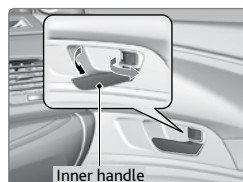
To lock: Press the lock side of the switch to lock all doors.



■ Using the Front Door Inner Handle

Pull the front door inner handle. The door unlocks and opens in one motion. Unlocking and opening the driver's door from the inner handle unlocks all other doors.

Do not pull a front door inner handle while the vehicle is moving.

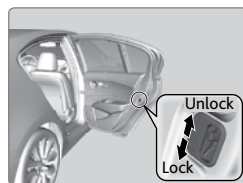


■ Childproof Door Locks

The childproof door locks prevent the rear doors from being opened from the inside regardless of the position of the lock tab.

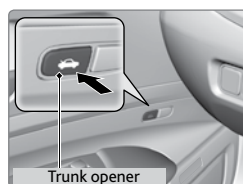
Slide the lever in the rear door to the lock position, and close the door.

Open the door using the outer door handle.



■ Using the Trunk Opener

Press the trunk release button on the driver's door to open the trunk.



Walk Away Auto Lock

When you walk away from the vehicle while carrying the remote transmitter, the doors and trunk can automatically lock if the following conditions are met:

- The remote transmitter is within a range of 5 feet (1.5 m).
- All doors and the hatch are closed.
- There is not an additional remote transmitter inside the vehicle.

Follow these steps (see diagram):

1. Exit the vehicle, close the door and stay near it.
Listen for a beep. The system is activated.
2. Walk at least 5 feet (1.5 m) away.
3. Listen for a beep and look for the lights to flash.
The doors lock.

To turn on this feature, follow the steps below:

1. Press the SETTINGS button.
2. Select Vehicle Settings, then Keyless Access Setup, then Walk Away Auto Lock.
3. Select On.

