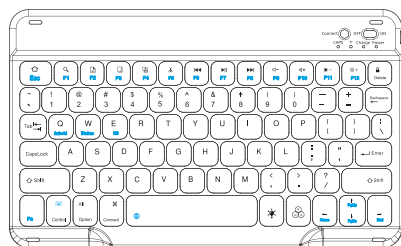


WIRELESS KEYBOARD USER MANUAL



1. Features

Welcome you to choose this Bluetooth wireless keyboard. It adopts Bluetooth wireless connection and scissor key structure, which will bring you a perfect input experience. It has built in rechargeable polymeric lithium battery and charging indicator. The keyboard will enter into sleeping mode if there is no action in 10 minutes, therefore it has a small consumption and long battery life

2. Pairing Instruction

Before use this keyboard, it must be connected with your tablet or other device. When it pairs successfully, you do not need to re-connect it in future.

Please connect the keyboard with your tablet according to the right graphic instruction as below.

- 1). Turn On the keyboard.
- 2). Press the "Connect" button to 3 seconds, the blue light blinks.
- 3). Open the Bluetooth from settings in your IPAD and find the Bluetooth keyboard, then click and connect.
- 4). Select application system:
IOS system: Fn+E; Android System: Fn+Q;
Windows System: Fn+W



3. Hot Keys

- | | | |
|--|--|-------------|
| Home/Esc | Previous Track | Lock Screen |
| Search | Play/Pause | Command |
| Select ALL | Next Track | Brightness- |
| Copy | Volume- | Brightness+ |
| Paste | Volume+ | Fn Function |
| Cut | Shows/Hides the Virtual Keyboard (IOS system only) | |
| Backlight adjustment (optional):
Adjust three modes: press once to turn on the light, press twice to turn on the seven-color breathing light cycle mode, press three times to turn off the light | | |
| Adjusting colorful light colors | | |

4. Input Method Switching

IOS: Control+Space.

Android: Control+Shift. Windows: Control+Shift.

5. Indicator description

Power LED: When the keyboard is turned on, this LED will turn on as blue, then turn off automatically after 1-2 Sec.

Charge LED: The Charge LED blinks red as the battery needs to be charged. The Charge LED will show a solid red light while the keyboard is charging, and it will go out when the keyboard is fully charged.

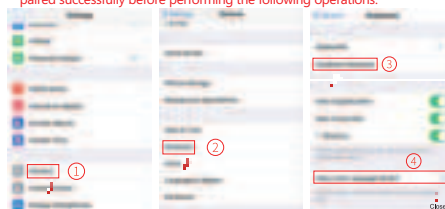
WiFi: The status light blinks blue to indicate that the keyboard is discoverable, ready for pairing with your tablet, and the WiFi LED goes out automatically after the connection done.

CAPS LED: When this LED is on as blue, which means the keyboard is locked in uppercase.

What if I cannot use the uppercase key?

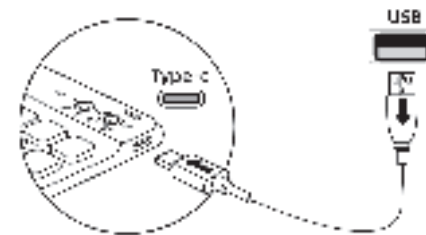
Open Tablet Settings > General > Keyboard > Hardware Keyboard > Caps Lock Language Switch keyboard (turn it off just fine)

Note: Please make sure that the bluetooth keyboard and tablet have been paired successfully before performing the following operations.



6. Charging Instructions

- 1) The first time using the keyboard, please charge the keyboard for at least 6 hours. In the future, when the battery is run out of power, please charge it for at least 2 hours when charging.
- 2) The Charge LED blinks red as the battery needs to be charged. The Charge LED will show a solid red light while the keyboard is charging. Charge the battery until the Charge LED light turns off.
- 3) Please connect the charging cable to the keyboard correctly as shown below.



Troubleshooting

If your keyboard doesn't work properly;

1. Please make sure that your computer bluetooth function is enabled.
2. The keyboard should be within 10 meters of the computer.
3. The connection password entered is correct.
4. Keyboard built-in battery power is too low, please charge the keyboard.
5. If the keyboard is not connected or paired with the tablet computer after successful pairing, the text input delay or even typing letters appear in the process, please according to the following steps: delete all Bluetooth devices, tablet computer Bluetooth option in the closed on a tablet computer Bluetooth option - restart the tablet computer keyboard and tablet computer again.

Specification

- 1) Frequency: 2.4GHz
- 2) Working Voltage: 3.7V DC
- 3) Working Current: <5mA
- 4) Standby current: 1.0mA
- 5) Sleeping current: <0.25mA
- 6) Working distance: within 10 meters

This device complies with Part 15 of the FCC Rules. Operation is subject to the following two conditions: (1) this device may not cause harmful interference, and (2) this device must accept any interference received, including interference that may cause undesired operation

NOTE: This equipment has been tested and found to comply with the limits for a Class B digital device, pursuant to Part 15 of the FCC Rules. These limits are designed to provide reasonable protection against harmful interference in a residential installation. This equipment generates, uses and can radiate radio frequency energy and, if not installed and used in accordance with the instructions, may cause harmful interference to radio communications. However, there is no guarantee that interference will not occur in a particular installation.

If this equipment does cause harmful interference to radio or television reception, which can be determined by turning the equipment off and on, the user is encouraged to try to correct the interference by one or more of the following measures:

- Reorient or relocate the receiving antenna.
- Increase the separation between the equipment and receiver.
- Connect the equipment into an outlet on a circuit different from that to which the receiver is connected.
- Consult the dealer or an experienced radio/TV technician for help.

Warning: changes or modifications not expressly approved by the party responsible for compliance could void the user's authority to operate the equipment