



# MORRIS

## Instructions Manual Safe Box



Model: MHS-1002

*Before using this product, please read this manual to ensure that you gain the maximum benefit from it.*

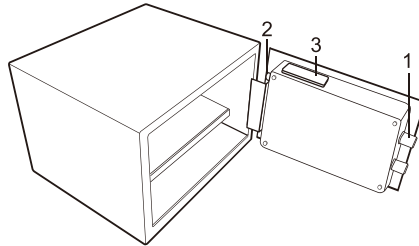
# FINGERPRINT LOCK SAFE

**! Please do not keep emergency keys in your safe!**

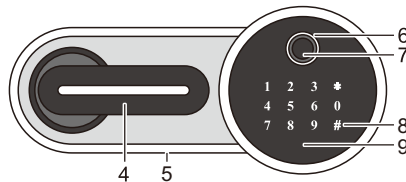
## ***Dear valued customer:***

*Thank you for choosing our products! You've taken an important step in organizing and protecting your most valued possessions. Every series of our safes is professionally made and designed to provide safety. Please take time to read and familiarize yourself with the proper operating procedures of your new safe presented on the following pages.*

### **Schematic drawing of case**



### **Schematic drawing of control panel**



- |                        |                        |                            |
|------------------------|------------------------|----------------------------|
| 1. Bolts               | 4. Knob                | 7. Finger Collector Screen |
| 2. Reset Button        | 5. External Power Port | 8. Touch Display Screen    |
| 3. Battery Compartment | 6. Light               | 9. Emergency Lock Cover    |

## PREPARATION

- The safe on delivery comes with no registered fingerprints.
- The safe is not loaded with batteries, you may insert the emergency key into the Emergency Key Cover to open the door.
- Uncover the battery compartment cover at the back of door and put in 4 X AA batteries. Please pay attention to the polarity of the batteries. For normal use, the batteries could last for one year.
- The preset code of safe on delivery is "168", the user may open the door with the preset code when batteries are placed and tested normal.

**CAUTION:** For security of your property, you will need to change the preset code.

## POWER SUPPLY

- Pull the door open.
- Pull out the battery compartment cover.
- Replace 4 fresh batteries by lining them up in a manner as indicates by the “ + ” and “ - ” signs.

**CAUTION:** When opening the door the under-voltage light will be on. This indicates that battery voltage is lower than 4.8V / low battery. Please change the battery. We suggest to use high-powered alkaline battery with high quality. Please do not use any inferior, counterfeit or carbon-zinc batteries.

## IMPORTANT NOTE

- Touch the key area to turn on the panel, press # and then you can enter your code.
- If the code is set and the fingerprint is not set, the empty fingerprint cannot open the door.  
If the fingerprint is set but the code is not set, initial code“168” cannot open the door.

## WARNING FUNCTION

### VIBRATION ALARM

- Touch the key area to turn on the panel and press the "\*\*\*" key.  
While the safe box is shaking, the alarm horn will also sound for 1 minute until you input the correct code or fingerprint.

### CODE ERROR ALARM

- If the code is entered incorrectly for three times or the fingerprint is entered incorrectly for five times, the alarm horn will alarm for one minute and the system will be locked for three minutes, during which no operation can be performed on the panel.

## RESTORE FACTORY SETTING

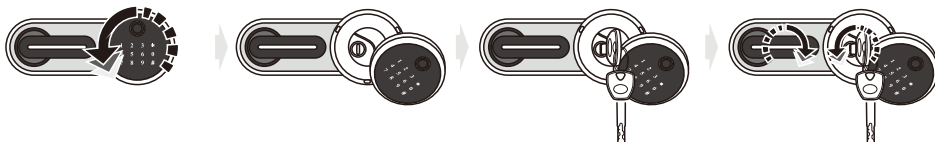
Press and hold the setting button for 3-5 seconds, the safe will restore the factory settings successfully. (Restore factory mode: initial code "168" opens the door, but no fingerprint).

### SET DOOR OPENING MODE: (Default is normal mode)

- To enter the programming mode, press the reset button and then press 3.  
If you want to set normal mode, press 1.  
If you want to set safe mode, press 2.  
If you enter except 1 or 2 you need to re-enter and choose 1 or 2.
- When setting the safe mode, you must set a password in advance (because in safe mode, both password and fingerprint can open the door). Otherwise, the code cannot be set. When the password is fail to be set or no password is set, please press "\*" key.
- During setting, press "\*" to return to last operation step.

## OPENING DOOR

- Normal mode: input the registered fingerprint **or** the correct code, the safe opens the door.
- Safe mode: input the registered fingerprint **and** the correct code, the safe opens the door. If you just input only fingerprint or only code, the door will not open.



## SET USER CODE & FINGERPRINT

### Press the set button:

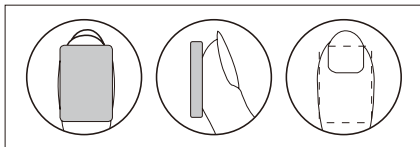
- To set the user code, press "1"; To add a fingerprint, press "2"; To set the door opening mode, press "3" (normal mode: single fingerprint or single code; Safe mode: code + fingerprint open door); To exit, press the "\*" key.

### SET USER CODE: (Default: empty code)

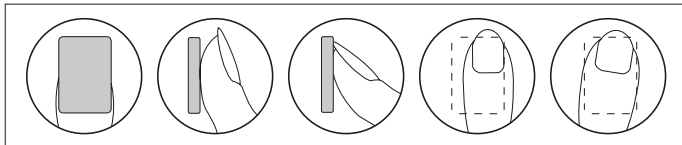
- To enter the programming mode, press "1". Then enter the user code and confirm with the # key. Enter your own 3-8-digit code with # key to confirm. Repeat twice and the new code will be set successfully. If the code does not meet the requirements, you need to re-enter a correct code.

### SET USER FINGERPRINT: (Default: empty fingerprint)

- Press "2" to enter the programming mode, when the fingerprint head lights up, input your fingerprint 3 times until the system displays "Registration succeeded." Then your personal fingerprint is set successfully.



I. Correct



II. Incorrect

### NOTICE ABOUT RECYCLING



Your product is designed and manufactured with high quality materials and components which can be recycled and reused.

This symbol means that electrical and electronic equipment, at their end-of-life,

should be disposed of separately from your household waste. Please dispose of this equipment at your local community waste collection/ recycling centre.

In the European Union there are separate collection systems for used electrical and electronic products. Please help us to conserve the environment we live in!

### DECLARATION OF CONFORMITY

Herewith, below Company states that this product complies with the requirements of below directives:

EMC Directive 14 / 30 / EU

RoHS Directive 11 / 65 / EU & 15 / 863 / EU

CE-marking Directive 93 / 68 / EEC



The detailed declaration of conformity can be found at  
[www.morris.gr](http://www.morris.gr)

KALLIOPI KARYDA & CO., LP

87A, 17th Noemvriou str, P.C. 55535

Pylea - Thessaloniki - Greece

T: +302316006600 | F: +302316006650