

# Bluetooth controller for wire lamp

## User Manual



## 24-keys Remote

The controllable distance is within 5M, can adjust brightness, change static colors, dynamic mode jump, gradient running water running horse and other effects.

## Accessories



1. Remote control: The 24keys infrared remote control.
2. Lamp and controller: The Bluetooth controller and the colorful wire lamp.
3. Phone APPS: The phone app controls the wire lamp.

## Functions



- 1.Power: Turn on/off the lamp.
- 2.W/WW: Choose the white or the warm white.
- 3.Down: The static color brightness and the dynamic speed decrease.
- 4.UP: The static color brightness and the dynamic speed increases.
- 5.Music: Switch to voice-activated mode.
- 6.CS: Seven static color switches.
- 7.C3: Running horse in the illusion of color.
- 8.C7: The seven colors flow alternately into the middle.
- 9.C16: Running horse with seven-color gradient.
10. Left running mode: Select the dynamic mode to the left, each key can be repeatedly pressed to switch colors.
- 11.Right running mode: Select the dynamic mode to the right, each key can be repeatedly pressed to switch colors.
- 12.Meteor:Seven colors gradients.
- 13.Jump:Seven-color jump.
- 14.Flash:Seven color burst flash jump change.
- 15.Running water: Multiple keystrokes to switch between different flow modes.
- 16.Auto: Click to switch to random dynamic mode.

## Parameter

Project	Value		
	Min	Avg	Max
Voltage	--	DC5V	--
Current	100mA	--	1500mA
Power	0.5W	--	7.5W
LED	SMD3535		
Wavelength	Red: 620-625nm; Green: 518-521nm; Blue: 465-468nm		
Points	1-200		
Control	APP+IR		
Operating temperature	-40℃~50℃		
Storage temperature	-40℃~60℃		
Bluetooth version	Bluetooth 4.0+		
Response Frequency	40Hz-18KHz,Nonuniformity: $\pm 3$ dBm		
Bluetooth connection distance	Straight Line and no obstacles distance 0-15M		
Remote Distance	Straight Line and no obstacles distance 0-10M		

## App's User Manual

### 1.Download and Install App

Use your phone to scan the QR code below or search "STARLIGHTING" in application market to download and install the App.



## 2. STARLIGHTING device

A.Turn on the phone Bluetooth.

B.Open the phone location information.

C.Turn on the device.

D.Open the APP.

E.Search for the Bluetooth device.



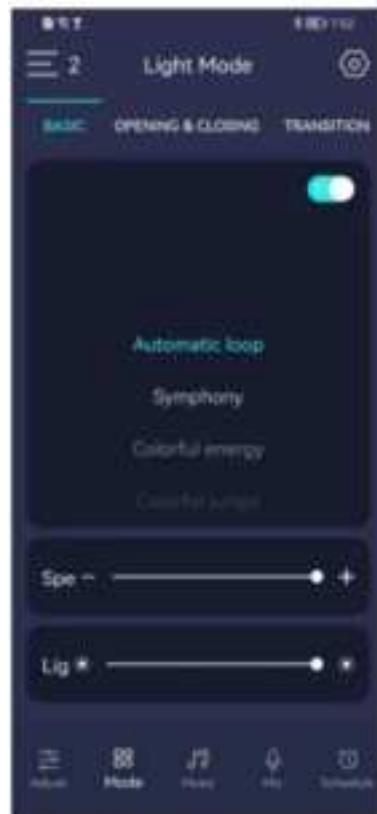
Click “DISCONNECTED”, and when the connection is successful, you can operate the functions in the APP.



The functions of App are as follows: Color Adjustment --- Mode --- Music --- Mic ---Schedule.



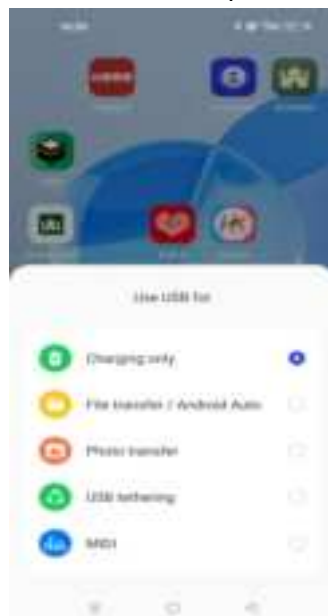
You can select the color from the color palette. In the Mode interface, you can choose your favorite lighting mode.



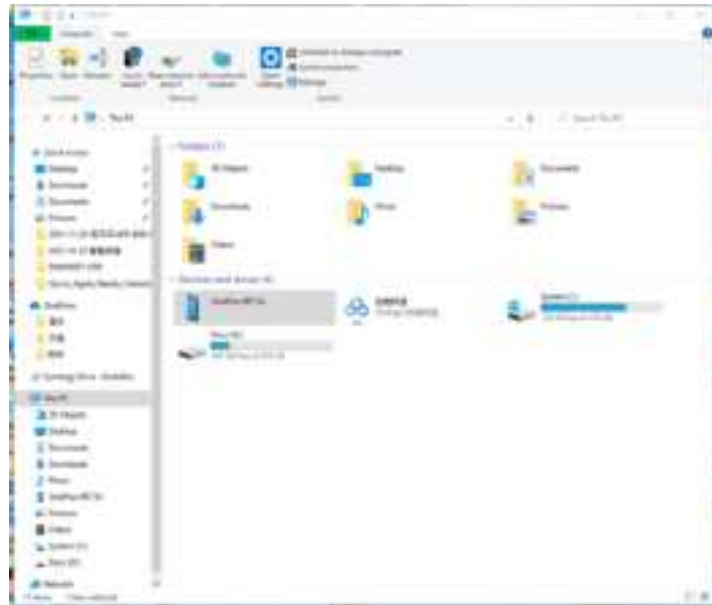
The Music interface can play local music in the mobile phone, and the lights flash with the rhythm of the music. (NOTE: App needs to be authorized to obtain storage permissions)

### **Import music to Android phone.**

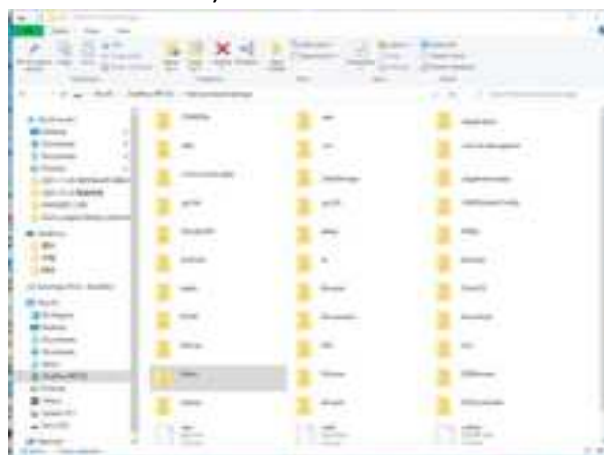
1. Use the data cable to connect the computer and the phone, and select "**Files transfer**" in the pop-up USB connection on the phone.



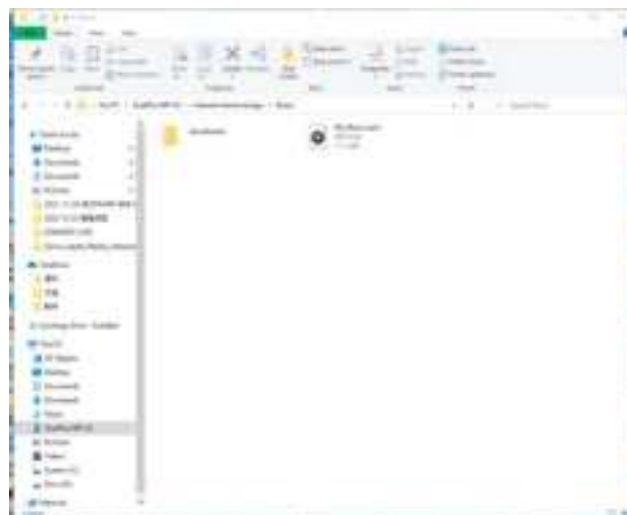
2. Open "My Computer" on the Windows computer, you can see a phone model option inside, open.



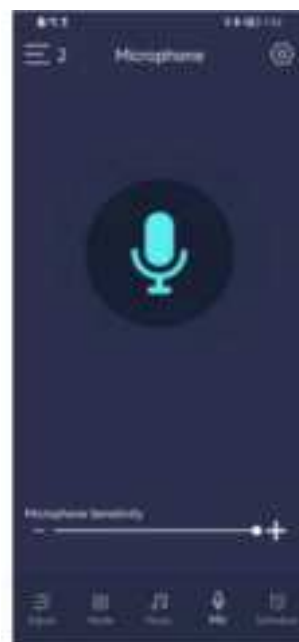
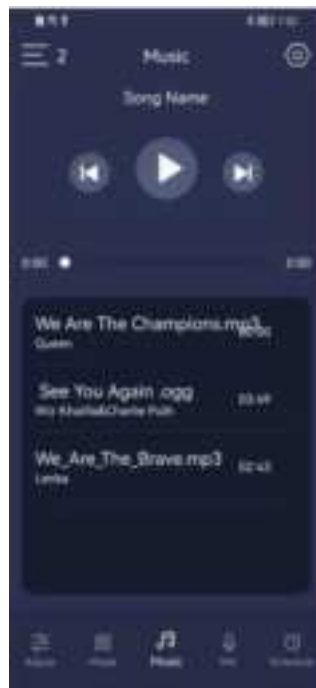
3. Double-click the phone, open the phone memory space, find the Music folder (if there is no new one can be created)



4. Copy the prepared music files into the Music folder.



5. Re-enter the App music interface, you can see that the music has been imported successfully



On the Microphone interface, the light flashes with the sound of the microphone.





In the schedule interface, you can set the time to turn on/off it.



## **WARNING**

- \*DO NOT IMMERSE IN FIRE
- \*CHILDREN UNDER THE AGE OF 16 SHOULD USE THIS PRODUCT UNDER ADULT SUPERVISION.

FCC Warning:

This equipment has been tested and found to comply with the limits for a Class B digital device, pursuant to part 15 of the FCC Rules. These limits are designed to provide reasonable protection against harmful interference in a residential installation. This equipment generates, uses and can radiate radio frequency energy and, if not installed and used in accordance with the instructions, may cause harmful interference to radio communications. However, there is no guarantee that interference will not occur in a particular installation. If this equipment does cause harmful interference to radio or television reception, which can be determined by turning the equipment off and on, the user is encouraged to try to correct the interference by one or more of the following measures:

- Reorient or relocate the receiving antenna.
- Increase the separation between the equipment and receiver.
- Connect the equipment into an outlet on a circuit different from that to which the receiver is connected.
- Consult the dealer or an experienced radio/TV technician for help.

Caution: Any changes or modifications to this device not explicitly approved by manufacturer could void your authority to operate this equipment.

This device complies with part 15 of the FCC Rules. Operation is subject to the following two conditions:

(1) This device may not cause harmful interference, and (2) this device must accept any interference received, including interference that may cause undesired operation.

This equipment complies with FCC radiation exposure limits set forth for an uncontrolled environment. This equipment should be installed and operated with minimum distance 20cm between the radiator and your body.