

# USER MANUAL



All About Passion

## Button function

### Left Button

Short Press: Mark a new lap  
Hold for 2 seconds: Power off  
(Power on: short press the button)  
(Short press in setting mode: exit / return and save the setting)

### Mid Button

Short Press: Pause / Continue (Short press to start recording after power on)  
Hold for 2 seconds: save the exercise record and exit the exercise  
(Short press in setting mode: enter the current setting / switch the number of digits)

### Right Button

Short Press: Page turning  
Hold for 2 seconds: setting mode  
(Short press in setting mode: switch setting options / switch the numerical)



- 2 -

## Status Icons

	Time
	No satellite signal
	Satellite signal level
	Accessory connecting status
	Under exercising
	Manual pause
	Connected with App by BLE
	Temperature
	Battery level
	Average
	Maximum
	Miles per hour
	Kilometers per hour
	Increased & Decreased
	Heart Rate
	Cadence
	Gradient

	Sport time
	Altitude
	Odometer (Total distance)
	Distance
	Ascend Distance
	Calories
	LAP
	Power
	Time zone

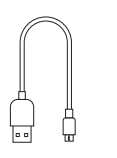


- 3 -

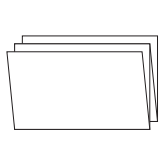
## Standard accessories



Main Device x 1



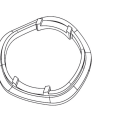
Charging Cable x 1



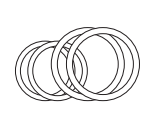
User Manual x 1



Standard bike mount x 1



Rubber pad for standard bike mount x 1

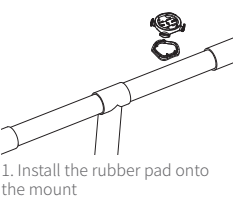


Big size rubber ring x 2  
Small size rubber ring x 2

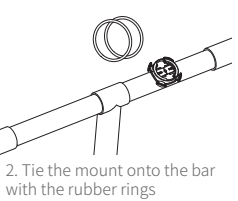
- 4 -

## How to Install

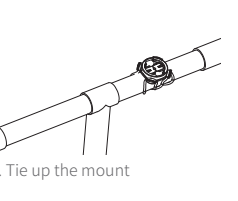
### Standard Mount Installation



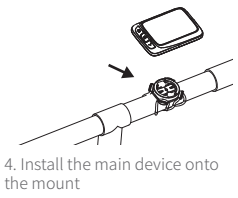
1. Install the rubber pad onto the mount



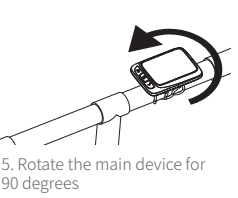
2. Tie the mount onto the bar with the rubber rings



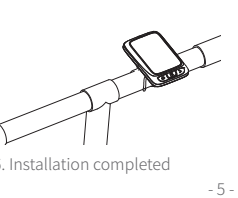
3. Tie up the mount



4. Install the main device onto the mount



5. Rotate the main device for 90 degrees

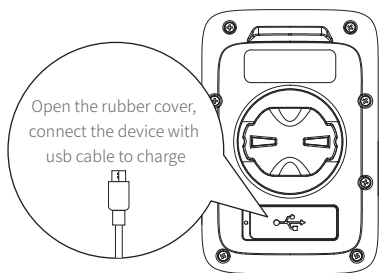


6. Installation completed

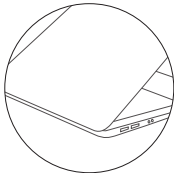
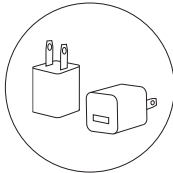
- 5 -

## Charging

- Please charge the device before first time use.
- Please use DC 5V power adaptor for charging.
- During the charging, the battery icon will flash until fully charged.



USB DC 5V power adaptor / Computer



- 6 -

## Acquiring Satellite Signals, Time Setting and Auto Backlight

### Auto Backlight

This device will automatically calculate the sun rise and sun set time, from the time half an hour before sun set to half an hour after sun rise, the backlight will be automatically lighten up, in the rest of the time, the backlight will be turned off if no operation detected in 15 seconds.

### Acquiring Satellite Signals

Please make sure the device is outdoor and under a clear view of sky. Usually it may take 15-90 seconds to locate satellite signals, remain stationary when acquiring satellite signals. This device can use speed sensor or GPS for speed tracking, when the speed sensor is not connected, the device will use GPS for speed tracking, and will use speed sensor when the sensor is connected.

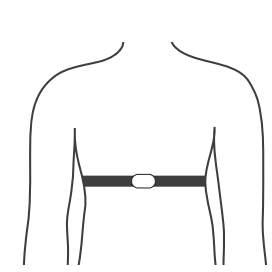
### Time Setting

The time and date will be calibrated automatically after locate the satellite signals when the device is powered on (Please set the time zone correctly, refer to the time zone setting chapter) or connect the device to the App (CoospoRide) to sync the time.

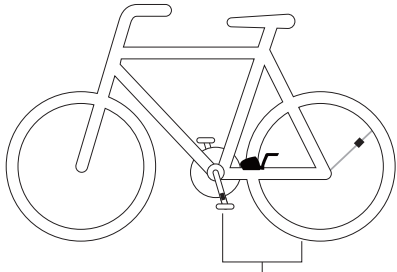
- 7 -

## Connecting with ANT+ Sensors

1. Please make sure the sensors are in wake-up mode (For example, the heart rate monitor should be worn on properly, and the speed cadence and power meter should be awakened by turning the pedals or wheels).



Wear it correctly, wake up the heart rate belt

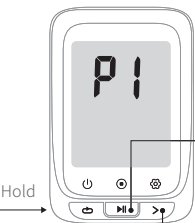


The speed cadence and power meter are awakened by turning the pedals or wheels

- 8 -

## Setting the Wheel Size

- Hold the > to get into setting mode;
- There are 5 settings pages available (P1 ~ P5), press the > to switch to P1;
- Press > to select to enter;
- The computer automatically searches for ANT+ peripherals, and automatically connects after searching for ANT+ peripherals;
- Press > to save the found accessories and return. If no ANT+ accessory is found, the device will return to the last pages automatically (When a power device is connected during riding, the computer will display power data first, and when there is no power device, it will display GRA slope data).



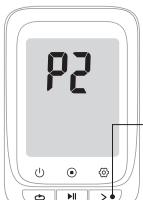
Press: Switch between P1~P5

Save and get back to the last pages (if no device found in 20 seconds, the device will get back to the last pages automatically)

- 9 -

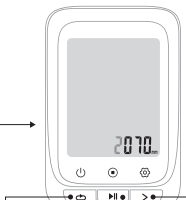
## Setting the Wheel Size

- Hold the > to get into setting mode;
- There are 5 settings pages available (P1 ~ P5), press the > to switch to P2;
- Press > to select to enter;
- Press > to select the setting digit, press the > to set the numbers;
- Press > to save and exit (Automatically exit in 6 seconds if no operation detected).



Press

Save and get back (Automatically exit if no operation detected in 6 seconds)



Select the digit (The selected digit will flash)

- 10 -

## Common wheel size and circumference (Wheel Size L (mm))

12 × 1.75 935mm	24 × 1.75 1890mm	26 × 1-3/8 2068mm	650 × 35A 2090mm
14 × 1.5 1020mm	24 × 2.00 1925mm	26 × 1-1/2 2100mm	650 × 38A 2125mm
14 × 1.75 1055mm	24 × 2.125 1965mm	26 × 1.40 2005mm	650 × 38B 2105mm
16 × 1.5 1185mm	26 × 1.75 2023mm	26 × 1.50 2010mm	700 × 18C 2070mm
16 × 1.75 1195mm	26 × 1.95 2050mm	27 × 1.2145mm	700 × 19C 2080mm
18 × 1.5 1340mm	26 × 2.00 2055mm	27 × 1-1/8 2155mm	700 × 20C 2086mm
18 × 1.75 1350mm	26 × 2.10 2068mm	27 × 1-1/4 2161mm	700 × 23C 2096mm
20 × 1.75 1515mm	26 × 2.125 2070mm	27 × 1-3/8 2169mm	700 × 25C 2105mm
20 × 1-3/8 1615mm	26 × 2.35 2083mm	27.5 × 1.75 2114mm	700 × 28C 2136mm
22 × 1-3/8 1770mm	26 × 3.00 2170mm	27.5 × 2.125 2174mm	700 × 30C 2170mm
22 × 1-1/2 1785mm	26 × 7/8 1920mm	27.5 × 1.5 2074mm	700 × 32C 2155mm
24 × 1.1753mm	26 × 1(59) 1913mm	27.5 × 1.95 2146mm	700C Tubular 2130mm
24 × 3/4 Tubular 1785mm	26 × 1(65) 1952mm	29 × 2.1 2288mm	700 × 35C 2168mm
24 × 1-1/8 1795mm	26 × 1.25 1953mm	29 × 2.2 2298mm	700 × 38C 2180mm
24 × 1-1/4 1905mm	26 × 1-1/8 1970mm	29 × 2.3 2326mm	700 × 40C 2200mm

- 11 -

## Time Zone Setting

- Hold the > to get into setting mode;
- There are 5 settings pages available (P1 ~ P5), press the > to switch to P3;
- Press > to select to enter (Default time zone: UTC/GMT + 08:00);
- Press > to select the setting digit, press the > to set the numbers;
- Press > to save and exit (Automatically exit in 6 seconds if no operation detected).



Press



Save and get back (Automatically exit if no operation detected in 6 seconds)

Select the digit (The selected digit will flash)

- 12 -

## Setting Metric and Imperial Units

- Hold the > to get into setting mode.
- There are 5 settings pages available (P1 ~ P5), press the > to switch to P4.
- Press > to enter (Default: KM/H).
- press the > to switch.
- Press > to save and exit (Automatically exit in 6 seconds if no operation detected).



Press

Save and get back (Automatically exit if no operation detected in 6 seconds)



Set the KM/H/MPH

- 13 -

## Power calibration

- Hold the > to get into setting mode;
- There are 5 settings pages available (P1 ~ P5), press the > to switch to P5, it will automatically calibrate;
- Short press > to recalibrate, the value flashes during the calibration, the value does not flash after the calibration is successful;
- After the calibration is successful, press > to save and exit (Automatically exit in 20 seconds if no operation detected).



Press

Save and get back (Automatically exit if no operation detected in 20 seconds)

Recalibrate

- 14 -

## GPS Positioning

- GPS searching is Auto after power on. Please start cycling after the GPS positioning is successful.
- If you start riding when the GPS is not positioned successfully (speed sensor not connected), the speed data (real-time, average, maximum) will be displayed as "-.-.", and the rest of the data remains the same.
- Tips: You can stand still 3-5 minutes to get more connections with satellites for better GPS signal.

- No signal
- Weak
- Normal
- Strong



No satellite signal

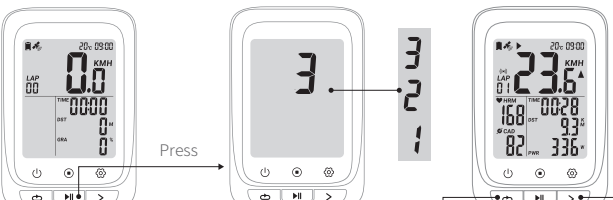
No Speed data display

Note: Please make sure you are outdoor when positioning. Bad weather and dense forest may affect GPS signal.

- 15 -

## Cycling

Turn on the device, press > to start an exercise and recording (During the cycling, when the cycling speed is 0, the device will pause automatically, if no data get for speed, cadence and heart rate in 15 minutes the device will turn into sleep mode, press > to resume).



Press

Press: Mark a new lap

Press: Switch the display

Press: Pause/continue  
Hold: Stop exercise and save the riding data

- 16 -

## \* Bluetooth Connection

- Download CoospoRide in Google Play or App Store



\* Compatible with



iOS 9.0 version and above, iPhone 4s and above



Any Bluetooth 4.0 enabled Android device with Android 4.3 and above

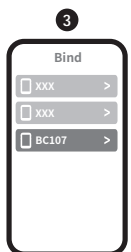
- 17 -

## Power on the bike computer;

- Open the CoospoRide App, enter the binding computer step, select the BC107 computer in the device list to bind the device, (the phone needs to turn on Bluetooth and allow Bluetooth permissions);



2



3

- 18 -

## In the activity page of the App, click on the connected device to enter the record synchronization operation page (through the authorization to Strava in the App more settings, the computer data can be synchronized to the Strava platform at the same time);

- Select the record to be synchronized and click > Sync, and the record on the computer will be deleted automatically after synchronization.



4



5

- 19 -

## Basic Parameters

Wireless	ANT+ & Bluetooth	Language	English
Display	FSTN Screen, 2.3 inch	Battery Capacity	1000mAh
Backlight	Yes	Battery Life	28 hours for a single use after fully charged
Locate mode	GPS & BDS	Material	PC+ABS+TPU
Lap Count	Yes	Dimension	81x54x20.6 mm
Storage Format	.fit	Accessories	ANT+ peripherals (Heart Rate Monitor, Speed Sensor, Cadence Sensor, Speed and Cadence 2 in 1 Sensor, Power Meter)
Water Resistance	IPX7	Supported	
Weight	64g	File Transfer	Bluetooth (Specified App Compatible)

## Attentions

The water resistant level of the bicycle computer is IPX7. It can be used in the rain if you close the protective cover on the back tightly. It is recommended to take down the bicycle computer and put it into waterproof bag if it rains heavily.

## Responsibility Disclaimer

- The information contained in this manual just for reference. The product described above may be subject to alteration owing to the manufacturer's continuing research and development plans, without making an announcement in advance.
- We shall not bare any legal responsibility for any direct or indirect, accidental or special damages, losses and expenses arising from or in connection with this manual or the contained product.

- 20 -