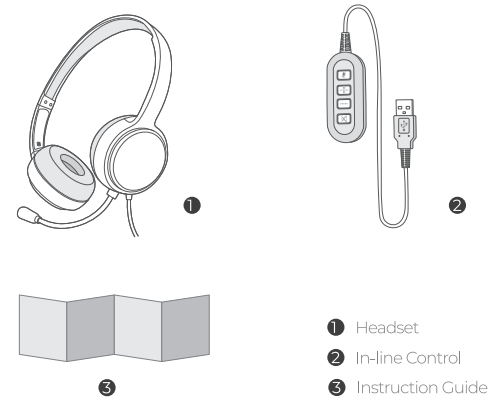


WIRED COMPUTER HEADSET

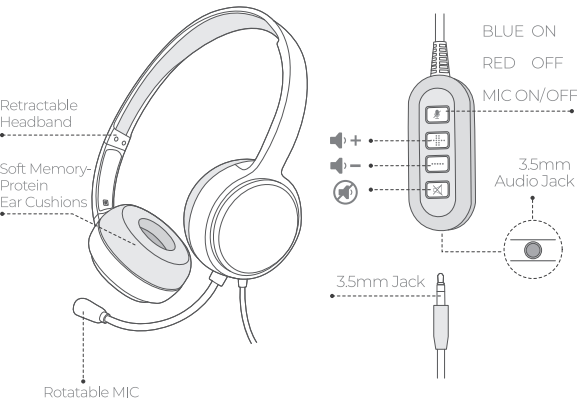


MODEL:CL721T

Package



Diagram



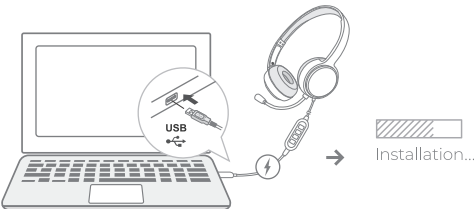
Specification

Speaker Diameter	Impedance
40mm	16Ω
Sensitivity	MIC Sensitivity
103±3dB	-46±3dB
Working Voltage	Frequency Range
5V	20Hz-20KHz
Cable Length	Connectivity
≈79ft. (2.4M)	USB Plug+3.5MM Audio Plug

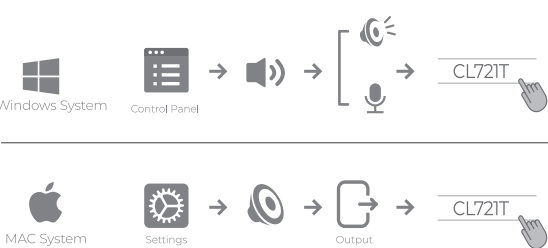
Compatible Devices



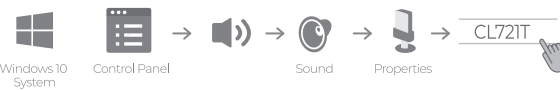
Compatible Devices



Connection Instructions

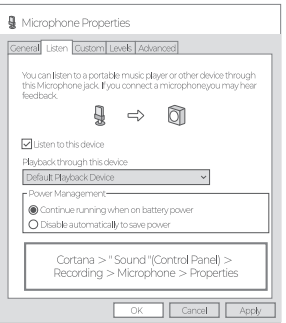


Win10 Compatibility Setting



Listening Mode

On Windows: Control Panel -> Sound -> Recording -> Microphone -> Listen -> Listen to this device -> Playback through this device -> Speakers



Warranty Information

Warranty & Support: We offer a 45-day money back & 24-month worry-free guarantee.
After-service Email: headphone.distri@gmail.com

FCC Statement

Any Changes or modifications not expressly approved by the party responsible for compliance could void the user's authority to operate the equipment. This device complies with part 15 of the FCC Rules. Operation is subject to the following two conditions: (1) This device may not cause harmful interference, and (2) this device must accept any interference received, including interference that may cause undesired operation.

Note: This equipment has been tested and found to comply with the limits for a Class B digital device, pursuant to part 15 of the FCC Rules. These limits are designed to provide reasonable protection against harmful interference in a residential installation. This equipment generates uses and can radiate radio frequency energy and, if not installed and used in accordance with the instructions, may cause harmful interference to radio communications. However, there is no guarantee that interference will not occur in a particular installation. If this equipment does cause harmful interference to radio or television reception, which can be determined by turning the equipment off and on, the user is encouraged to try to correct the interference by one or more of the following measures:

- Reorient or relocate the receiving antenna.
- Increase the separation between the equipment and receiver.
- Connect the equipment into an outlet on a circuit different from that to which the receiver is connected.
- Consult the dealer or an experienced radio/TV technician for help.