

## Specification

Solar panel	42W 18V
LiFePO4 battery	154WH 12.8V
LED power	18W
Luminous output(lm)	2,800lm max
Solar charge controller	>98% MPPT
Remote control	2.4G
Certificates	CE, ROHS, IP65
Fixture color	Black / Gray (RAL 7016)
Pole diameter to fit	φ 76mm
Warranty	3 years

Notice : Please charge the light fully every 3 months if it is not sold to remain its performance.

## Materials in Package



Light Head



Light Holder



Remote Control



M8\*40 Screw (4pcs)  
M8\*16 Screw (2pcs)



Screw Driver

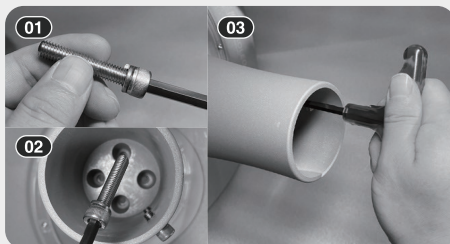


# USER MANUAL

## Solar Garden Light



## HOW TO INSTALL



### STEP 1

Use the T shaped allen wrench to attach the light holder to light body by 4pcs of M8\*40 screws. Make sure it is installed tightly.



### STEP 2

Install the prepared light head onto the lamp pole, tighten the two M8\*16 screws with a T-shaped hexagonal wrench, and the installation is complete.



### STEP 3

Please turn on the switch button before use



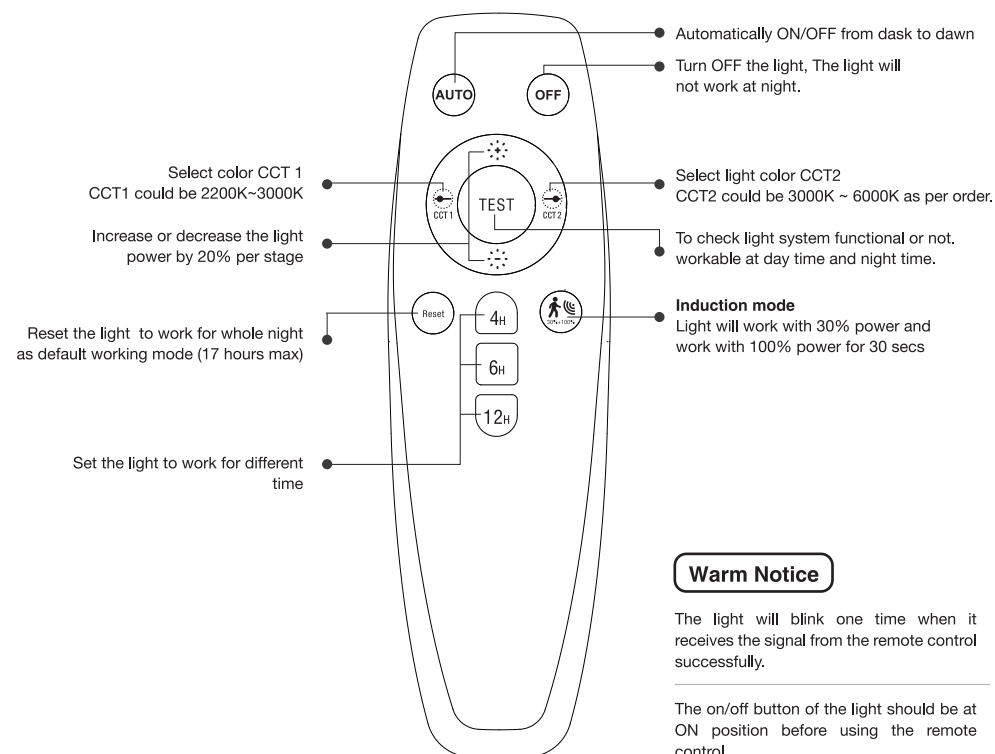
### STEP 4

Press the " AUTO" button, then the light will start to work from dusk to dawn automatically. You can choose the preferred light color first, then adjust the light brightness or switch to motion detection mode, then set the working hours to change the default working mode.

### Note :

1. Default working mode : 3 hours 100% + 4 hours 40% + 10 hours 20% + 40% when sensor is triggered ( total 17 hours)
2. Please set the working hours at the last step.
3. The lighting program could be also easily adjusted when the light is installed on the pole.

## REMOTE CONTROL



### Warm Notice

The light will blink one time when it receives the signal from the remote control successfully.

The on/off button of the light should be at ON position before using the remote control.

## Regular Trouble Shot

Problem	Reason	How to solve
Light is off	Switch is off	Turn on the on/off switch of light
	No direct sunshine	Move the light to the direct sunny area
	Continuous cloudy or rainy days	Light will back to work when sun returns
	There is debris on solar panel	Clean the solar panel
Short working time	Location problem	Move the light to the area with direct sunshine
	Continuous cloudy or rainy days	Light will be recharged when sun returns
	Battery life is expired	Replace with a new battery