

MUNBYN

MORE CHOICE FOR YOUR
GROWING BUSINESS

MUNBYN

Version 1.00

IMP002 Receipt Printer

Easy Setup Guide



IMP002

Contents

1.0. Introduction	3
2.0. Check the Packing List	4
3.0. Overview	5
3.1. Printer Overview	5
3.2. Function of the button	6
3.3. Indicator light status	6
3.4. Prepare before using	8
3.4.1 Li-ion battery installation	8
4.0. Paper Loading	9
5.0. Initial Setup	10
5.1 Set Up the IMP002 for First Use on Android	10
5.1.1 How to Connect a Bluetooth Printer?	10
5.1.2 How to connect a Bluetooth printer to Loyverse POS for printing order receipts?	13
5.2 Set Up the IMP002 for First Use on Windows	19
5.2.1 Download Windows Driver	19
5.2.2 USB Interface	20
5.3 Set Up the IMP002 for First Use on MacBook	21
5.3.1 Download MacBook Driver	21
5.3.2 USB Interface	21
5.4 Set Up the IMP002 for First Use on ChromeOS	23

5.4.1 Download Ubuntu Driver	23
5.4.2 USB Interface	23
6.0 Contact us	29
7.0 FCC Statement	29

1.0. Introduction

This document introduces the setup procedure for the IMP002. Please read the instructions before using the printer.

For further instructions, please refer to the IMP002 Thermal Printer manual.

IMP002 Thermal Printer Manual: munbyn.biz/002userManual



Notice: When dealing with links that require attention to case-sensitive letters and numbers, it's important to be mindful of the exact casing used in the link.

2.0. Check the Packing List



In case of omission or damage, don't hesitate to contact us via the contact details below.



WhatsApp
+86 181 4489 8200

FB message
Munbynofficial



support@munbyn.com



+1 6502062250



munbyn



Monday to Friday 24 hours

3.0. Overview

3.1. Printer Overview



3.2. Function of the button

Button	Picture	Functions
Power button	Hold the button for two seconds until you hear two beep	Turn on
Power button	Hold the button for two seconds until you hear one beep	Turn off
Feed button	Click	Paper output
Power button & Feed button	In the shutdown state, hold down the FEED button on the printer first, then press the Power button until you hear two beeps and see the status light flash red, then release your hand	Print self-test paper

3.3. Indicator light status

Power Indicator Light	Status IndicatorLight	Status	Situation
Green	/	Light (The status indicator light is off when the power is ready)	Standby (Bluetooth not connected)

Power Indicator Light	Status IndicatorLight	Status	Situation
Green	/	Flash	Charging
Green	/	Light always on	Printing or the power is fully charged in power on mode
Green	Green	Light	Standby (Bluetooth connected)
Green	Red	Flashing Red and the printer beeps (500ms/time)	Out of paper
Green	Red	Flashing Red and the printer beeps (500ms/time)	Cover is not closed
Green	Red	Flashing Red (200ms/time)	Printer head is overheated. Printer startup over-temperature protection

3.4. Prepare before using

3.4.1. Li-ion battery installation

(1) Refer to the picture, push the battery cover in the direction of the arrow.



(2) Put the battery in the battery slot.



Notice: Install the positive pole to the left-do not install it backwards.

(3) Close the battery case.



4.0. Paper Loading

- (1) Pry open the hood from the grooves on both sides and then open the lid.
- (2) Load a paper roll in the direction shown in the illustration.



- (3) Pull the end of the paper out a little and push down the printer's top cover to close.

Notice: If the device remains idle for 1 hour, it will automatically shut down. This feature is designed to reduce battery consumption during prolonged standby mode.

5.0. Initial Setup

5.1. Set Up the IMP002 for First Use on Android

Before connecting to the Bluetooth printer, you need to print a self-test page to view the machine's Bluetooth name and connection password. (For details on the self-test page, refer to Figure 5-2. For printing the self-test page method, refer to section 3.2).

5.1.1. How to Connect a Bluetooth Printer?

- (1) Put the thermal paper into the printer and press the printer power button to turn on the printer.

(2) Turn on the Bluetooth on your phone. Search Bluetooth device [P502A-6036] and connect it.

Notice: The suffix digits (last 4 digits) of the device's Bluetooth name are different primarily to distinguish the situation when multiple devices are used for printing.

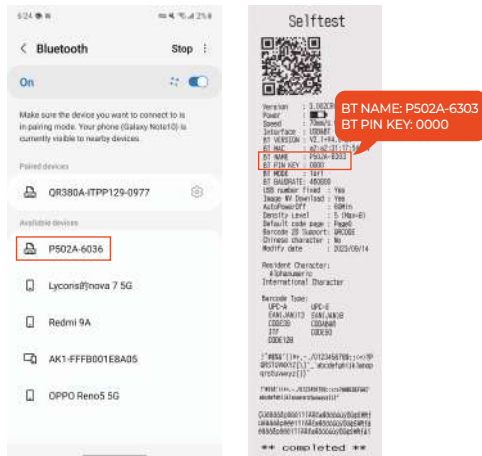


Figure 5-1 Select Bluetooth

(3) Enter pairing code [0000] and click [Pair]. Then the mobile phone is successfully connected to the printer via Bluetooth.

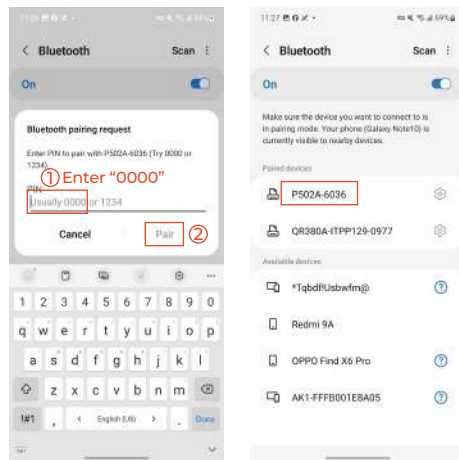


Figure 5-3 Connect Bluetooth

5.1.2. How to connect a Bluetooth printer to Loyverse POS for printing order receipts?

- (1) Turn on the Bluetooth on your phone. Search Bluetooth device [P502A-6036] and connect it.
- (2) Run [Loyverse POS] and set printer from [Setting] → [Printers].

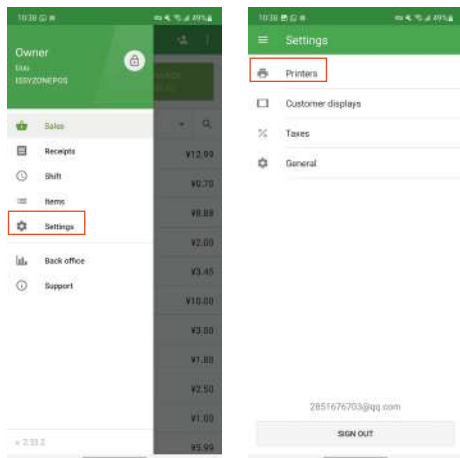


Figure 5-4 Setting Printer

- (3) Click on the [+] button in the bottom right corner to add a printer. The printer's name can be anything you like. Printer model, select [Other model] → [Interface], select [Bluetooth].

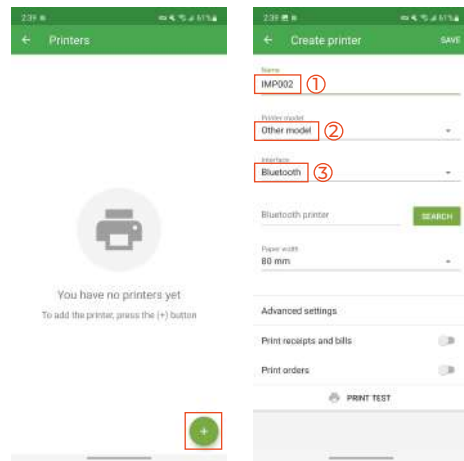


Figure 5-5 Add Printer

(4) Click [SEARCH] and select [P502A-6036] connection.

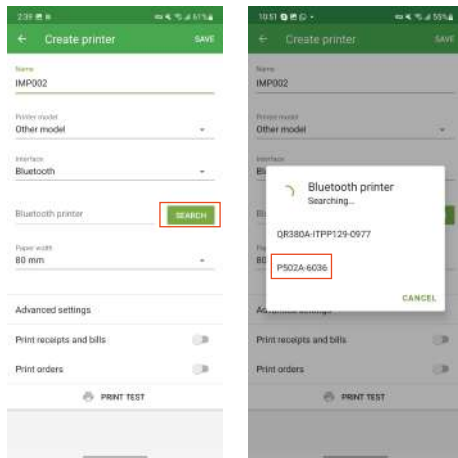


Figure 5-6 Search Bluetooth Printer

(5) Paper width, select [58mm].

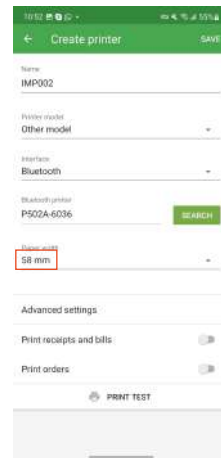


Figure 5-7 Paper Width

(6) From [Advanced setting], set [Cutter ESC/POS commands], input [0A,0A,0A,1D,56,42,00].

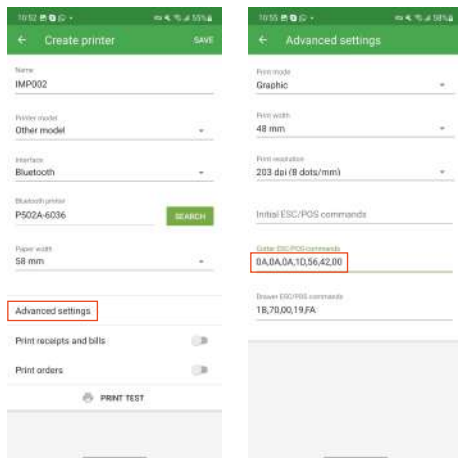


Figure 5-8 Advance Setting

(7) Turn on two selections: [Print receipts and bills], [Automatically print receipts]. Then, you can [PRINT TEST] at the bottom. Connection is successful.

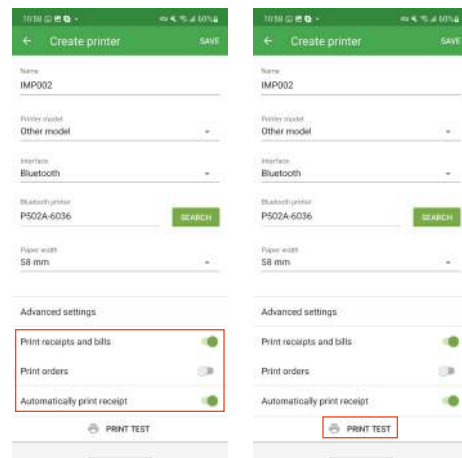


Figure 5-9 Print Test

Connect the Loyverse POS to print order receipt according to the video.

Demo video: munbyn.biz/002loyverse



5.2. Set Up the IMP002 for First Use on Windows

5.2.1. Download Windows Driver

You can get the driver by clicking the link below to download the driver.

Driver download: munbyn.biz/002driverW

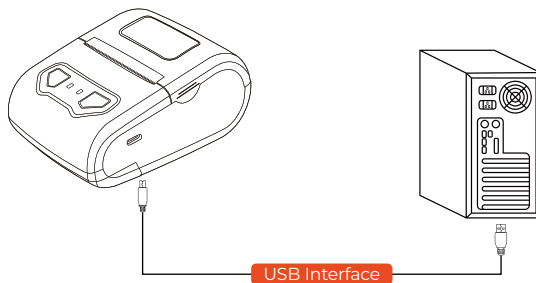
Setting tool download: munbyn.biz/002WTool

Only supports USB connection.

Notice: When dealing with links that require attention to case-sensitive letters and numbers, it's important to be mindful of the exact casing used in the link.

5.2.2. USB Interface

- 1) Connect the printer to the power outlet via the power cord.
- 2) Connect the printer to your Windows computer via USB.
- 3) Place the thermal paper into the printer and power it on.



Open the downloaded driver and install it.

Demo video: munbyn.biz/002windU



5.3. Set Up the IMP002 for First Use on MacBook

5.3.1. Download MacBook Driver

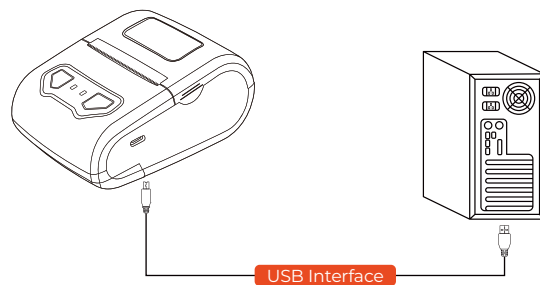
You can get the driver by clicking the link below to download the driver.

Driver download: munbyn.biz/MACD

Only supports USB connection.

5.3.2. USB Interface

- 1) Connect the printer to the power outlet via the power cord.
- 2) To connect the printer to your Mac, plug one end of the USB cable into your Mac's USB port and the other end into the printer. Use a USB-A to USB-C adapter for Macs with a USB-C port if needed.
- 3) Place the thermal paper into the printer and power it on.

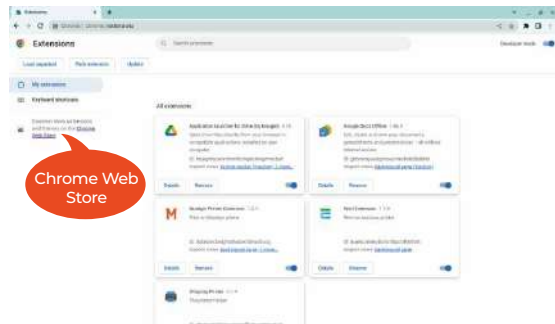


Open the downloaded driver and install it.

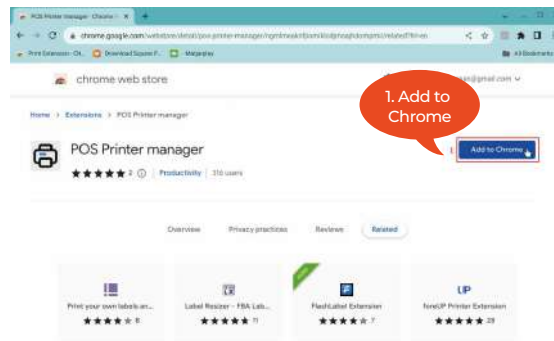
Demo video: munbyn.biz/002macU



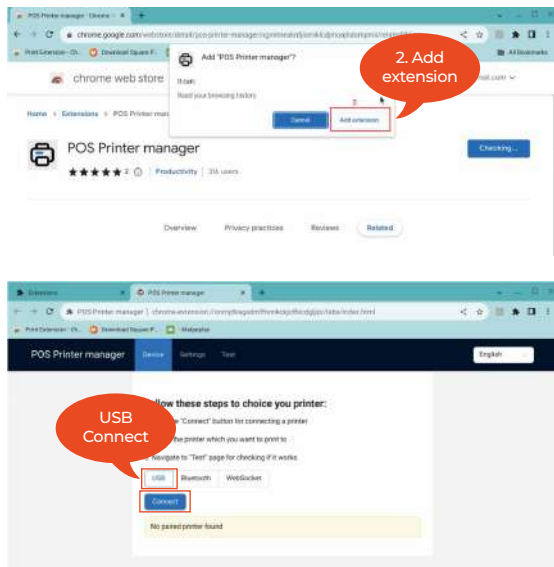
b. Click [Chrome Web Store].



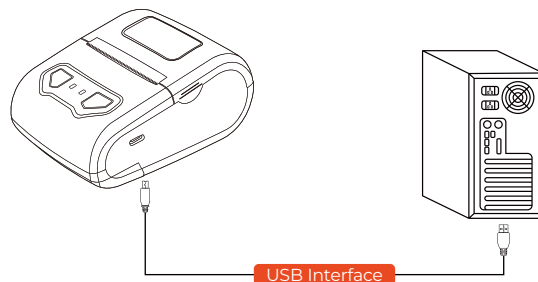
c. Search [POS Printer manager] on Google Store and click [Add to Chrome].



d. Click [Add extension]. You can now see the installed [POS Printer manager] extension program on the page.



2) Connect the printer to the power outlet via the power cord, and connect the printer to your ChromeBook computer via USB. Place the thermal paper into the printer and power it on.



Connect the printert according to the video.

ChromeOS Connection System demo video:
munbyn.biz/002chromeosvideo



6.0. Contact us

MUNBYN provides 18 months warranty and lifetime free service.

If you encounter any issues with the product, don't hesitate to contact the MUNBYN team to receive troubleshooting tips or a prompt replacement.

Email: support@munbyn.com (24-7 online support)

WhatsApp: +86 18144898200

Phone: +1 6502062250

7.0. FCC Statement

Changes or modifications not expressly approved by the party responsible for compliance could void the user's authority to operate the equipment.

This equipment has been tested and found to comply with the limits for a Class B digital device, pursuant to Part 15 of the FCC Rules. These limits are designed to protect reasonably against harmful interference in a residential installation. This equipment generates uses and can radiate radio frequency energy and, if not installed and used in accordance with the instructions, may cause harmful interference to radio communications. However,

there is no guarantee that interference will not occur in a particular installation. If this equipment does cause harmful interference to radio or television reception, which can be determined by turning the equipment off and on, the user is encouraged to try to correct the interference by one or more of the following measures:

- Reorient or relocate the receiving antenna.
- Increase the separation between the equipment and receiver.
- Connect the equipment to an outlet on a circuit different from that to which the receiver is connected.
- Consult the dealer or an experienced radio/TV technician for help.

This device complies with part 15 of the FCC rules. Operation is subject to the following two conditions (1) this device may not cause harmful interference, and (2) this device must accept any interference received, including interference that may cause undesired operation.

This equipment complies with FCC radiation exposure limits set forth for an uncontrolled environment.