

SHARPER IMAGE®

HOVERBOARD

Item No. 207208

User Guide

UL 2272 CERTIFIED
SELF BALANCING
SCOOTER

UL CERTIFIED
CHARGER



Thank you for purchasing the Sharper Image Hoverboard. Please read this guide and store it for future reference.

WHAT DOES UL LISTING MEAN?

UL Listing means that UL [Underwriters Laboratories] has tested representative samples of the product and determined that it meets their requirements. These requirements are based primarily on UL's published and nationally recognized Standards for safety.

WHAT DOES UL 2272 CERTIFIED MEAN?

UL supports retailers and manufacturers by offering electrical and fire-safety testing and certification under UL 2272, Electrical Systems for Self-Balancing Scooters. This standard evaluates the safety of the electrical drive train system and battery and charger system combinations, but does NOT evaluate for performance, reliability, or rider safety.

INTRODUCTION

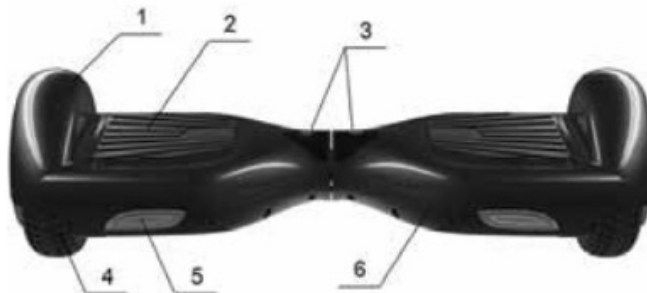
The Hoverboard is a personal transportation vehicle that has been tested for safety. However, operating this vehicle poses certain inherent risks, including injury and/or property damage. Please wear appropriate safety gear at all times while operating your Hoverboard and be sure to read the contents of this manual prior to operation in order to minimize risks.

WARNING!

- In order to avoid dangers that are caused by collisions, falls and/or loss of control, please learn how to ride your Hoverboard safely outdoors in a flat, open environment
- This manual includes all operating instructions and precautions. All users must read this manual carefully and follow the instructions. Please wear all appropriate safety gear, including a helmet certified by the CPSC [Consumer Product Safety Commission]. Please follow all local laws regarding use in public areas and roadways

DESCRIPTION OF PARTS

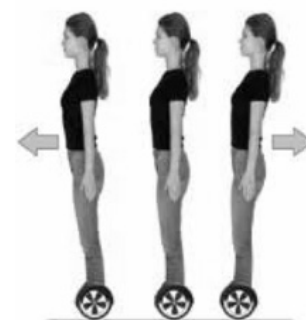
1. Fender
2. Mats
3. Display Board
4. Tire and Motor
5. LED Light
6. Underbody Protection



OPERATING YOUR HOVERBOARD

The Hoverboard uses gyroscopes and acceleration sensors to control balance intelligently depending on your center of gravity. The Hoverboard also uses a servo-control system to drive the motor. It adapts to the human body, so when you stand on the Hoverboard, just lean your body forward or backward. The power plant will control the wheels in a forward or backward motion to keep you balanced.

To turn, simply slow down and lean your body left or right. The built-in inertia dynamic stabilization system will maintain the direction frontwards or backwards. However, it cannot guarantee stability while turning left or right. As you drive the Hoverboard, please shift your weight in order to overcome the centrifugal force and improve your safety while turning.



MAT SENSORS

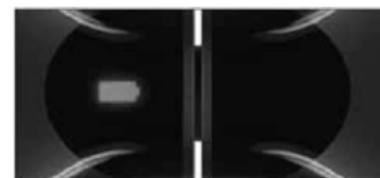
There are four sensors under the mats. When the user steps on the mats, the Hoverboard will automatically initiate self-balance mode.

A. While driving the Hoverboard, you must be sure to step on the foot mats evenly. **DO NOT STEP ON ANY AREA OTHER THAN THE MATS.**

B. Please do not put items on the mats. This will make the Hoverboard switch on, which could potentially cause injury to people, or damage to the unit.

DISPLAY BOARD

The Display Board is located in the middle of the Hoverboard. It displays the current information of the device.



BATTERY DISPLAY

A. A solid GREEN LED light indicates that the Hoverboard is fully charged and ready to use. The ORANGE LED light indicates that the battery is low and needs to be recharged. When the LED light becomes RED, the battery is depleted and needs to be charged immediately.

B. Running LED: When the operator triggers the mat sensors, the running LED will light up. GREEN means that the system has entered into a running state. When the system has an error during operation, the running LED light will turn RED.

SAFETY

We hope every user can drive their Hoverboard safely.

If you recall learning how to ride a bicycle, or learning how to ski or roller blade, the same sensation applies to this vehicle.

1. Please follow the safety instructions in this manual. We strongly recommend that you read the manual carefully before operating your Hoverboard for the first time. Check for tire damage, loose parts, etc. before driving. If there are any abnormal situations, please contact our Customer Service department immediately.
2. Do not use the Hoverboard incorrectly, as this may endanger the safety of persons or property.
3. Do not open or modify the parts of the Hoverboard, as this may cause serious injury. There are no user-serviceable parts in the Hoverboard.

WEIGHT LIMIT

The following two points are the reason we've set a weight limit for the Hoverboard:

1. To ensure the safety of the user.
2. To reduce damage due to overload.
 - Maximum Load: 220 lbs. [100 kg]
 - Minimum Load: 50.6 lbs. [23kg]

MAXIMUM DRIVING RANGE

The Hoverboard operates for a maximum of 14.9 miles. There are several factors that will affect the driving range, such as:

Grade: A smooth, flat surface will increase the driving range, while an incline or hilly terrain will reduce the range.

Weight: The weight of the driver can affect the driving range.

Ambient Temperature: Please ride and store the Hoverboard at the recommended temperature, which will increase its driving range.

Maintenance: A consistent battery charge will help increase the range and the life of the battery.

Speed and Driving Style: Maintaining a moderate speed will increase the range. On the contrary, frequent starting, stopping, acceleration and deceleration will reduce the range.

SPEED LIMIT

The Hoverboard has a top speed of 6.2mph [10 kmh]. When the speed is close to the maximum allowable speed, the buzzer alarm will ring. The Hoverboard will keep the user balanced up to the maximum speed. If the speed exceeds the safety limit, the Hoverboard will automatically tilt the driver back in order to reduce the speed to a safe rate.

LEARNING TO DRIVE

STEP 1: Place the Hoverboard on a flat surface

STEP 2: To turn on your Hoverboard, press the Power Button

STEP 3: Put one foot on the pad. This will trigger the pedal switch and turn on the indicator light. The system will automatically enter self-balancing mode. Next, place your other foot on the other pad.

STEP 4: After standing up successfully, keep your balance and center of gravity stable while the Hoverboard is in a stationary state. Make small forward or backward movements using your entire body. **DO NOT MAKE ANY SUDDEN MOVEMENTS.**



DO NOT JUMP onto your Hoverboard. This will cause severe damage. Carefully step onto the device only.

STEP 5: To turn left or right, lean your body in the direction you wish to go. Positioning your right foot forward will turn the vehicle LEFT. Positioning your left foot forward will turn the vehicle RIGHT.

STEP 6: Keep the Hoverboard balanced. Take one foot off the mat quickly, then remove the other foot.



- Do not turn sharply
- Do not turn at high speeds
- Do not drive quickly on slopes
- Do not turn quickly on slopes



SAFE MODE

During operation, if there is a system error, the Hoverboard will prompt drivers in different ways. An alarm indicator lights up, a buzzer sounds intermittently, and the system will not enter self-balancing mode in these circumstances:

- If you get on the Hoverboard while the platform is tilted forwards or backwards
- If the battery voltage is too low
- If the Hoverboard is in charging mode
- If you are driving too fast
- If the battery has a short
- If the motor temperature is too high

In Protection Mode, the Hoverboard will turn off if:

- The platform is tilted forward or backward more than 35 degrees
- The tires are blocked
- The battery is too low
- There is a sustained high discharge rate during performance [such as driving up steep slopes]



When the Hoverboard goes into Protection Mode [engine off], the system will halt. Press the foot pad to unlock. Do not continue to drive the Hoverboard when the battery is exhausted, as this may lead to injury or damage. Continued driving under low power will affect battery life.

PRACTICING DRIVING

Learn how to drive the Hoverboard in an open area until you can easily get on and off the device, move forwards and backwards, turn, and stop.

- Dress in casual clothes and flat shoes
- Drive on flat surfaces
- Avoid crowded places
- Be aware of overhead clearance to avoid injury

SAFE DRIVING

Carefully read the following safety precautions prior to operating your Hoverboard:

- When you are driving the Hoverboard, make sure to take all necessary safety measures, such as wearing a CPSC certified helmet, knee pads, elbow pads, and other protective gear
- The Hoverboard should only be used for personal use and is not designed for commercial applications, or for use on public roads or pathways
- You are prohibited from using the Hoverboard on any roadway. Check with your local authorities to confirm where you can safely ride. Obey all laws that apply
- Do not allow children, the elderly, or pregnant women to ride the Hoverboard
- Do not drive the Hoverboard under the influence of drugs or alcohol
- Do not carry items when driving your Hoverboard
- Be alert of obstacles in front of you
- Legs should be relaxed, with your knees slightly bent to help you balance
- Make sure your feet are always on the mats
- The Hoverboard should only be driven by one person at a time
- Do not exceed the maximum load

- Keep a safe distance from others while driving your Hoverboard
- Do not engage in distracting activities while driving your Hoverboard, such as talking on the phone, listening to headphones, etc.
- Do not drive on slippery surfaces
- Do not make reverse turns at high speeds
- Do not drive in dark places
- Do not drive over obstacles [twigs, litter, stones, etc.]
- Do not drive in narrow spaces
- Avoid driving in unsafe locations [around flammable gas, steam, liquid, etc.]
- Check and secure all fasteners prior to driving

BATTERY POWER

You must stop driving your Hoverboard if it displays low power, otherwise it may affect performance:

- Do not use the battery if it emits an odor
- Do not use the battery if it is leaking
- Do not allow children or animals near the battery
- Remove the charger prior to driving
- The battery contains dangerous substances. **DO NOT OPEN THE BATTERY. DO NOT INSERT ANYTHING INTO THE BATTERY**
- Only use the charger that was provided with the Hoverboard. **DO NOT USE ANY OTHER CHARGERS**
- Do not charge a battery that has been overly discharged
- Dispose of the battery in accordance with local laws

CHARGING

Only use the charger that was provided with your Hoverboard.

- Ensure that the port is dry
- Plug the charging cable into the Hoverboard
- Connect the charging cable to the power supply
- The red light indicates that it has begun charging. If the light is green, check whether the cable is connected correctly
- When the indicator light turns from red to green, this indicates that the battery is fully charged. At this time, please stop charging. Overcharging will affect performance
- Use a standard AC outlet
- Charging time is approximately 2-4 hours
- Keep the charging environment clean and dry

TEMPERATURE

The recommended charging temperature is 50°F - 77°F. If the charging temperature is too hot or too cold, the battery will not charge completely.

BATTERY SPECIFICATIONS

BATTERY: LITHIUM-ION

CHARGING TIME: 2-4 HOURS

VOLTAGE: 36V

INITIAL CAPACITY: 2-4Ah

WORKING TEMPERATURE: 32°F - 113°F

CHARGING TEMPERATURE: 50°F - 77°F

STORAGE TIME: 12 MONTHS AT -4°C - 77°F

STORAGE HUMIDITY: 5%-95%

SHIPPING NOTES



Lithium-ion batteries contain dangerous substances. Ship in accordance with local laws.

STORAGE AND MAINTENANCE

The Hoverboard requires routine maintenance. Before you perform the following operations, make sure that the power is off and the charging cable is disconnected.

- Fully charge your battery before storing
- If you store your Hoverboard, charge the battery at least once every three months
- If the ambient storage temperature is below 32°F, do not charge the battery. Bring it into a warm environment [above 50°F]
- To prevent dust from entering your Hoverboard, cover it while it is in storage
- Store your Hoverboard in a dry, suitable environment

CLEANING

The Hoverboard requires routine maintenance. Before you perform the following operations, make sure that the power is off and the charging cable is disconnected.

- Disconnect the charger and turn the vehicle off
- Wipe the cover
- Avoid using water or other liquids while cleaning. If water or other liquids seep into your Hoverboard, it will cause permanent damage to its internal electronics

HOVERBOARD DIMENSIONS AND SPECIFICATIONS

The recommended charging temperature is 50°F - 77°F. If the charging temperature is too hot or too cold, the battery will not charge completely.



NET WEIGHT: 21 lbs.

MAX LOAD: 50.6 lbs. – 220 lbs.

MAX SPEED: 6.2 mph

RANGE: 6-20 MILES [DEPENDING ON RIDING STYLE, TERRAIN, ETC.]

MAX CLIMBING INCLINE: 15°

MINIMAL TURNING RADIUS: 0°

BATTERY: LITHIUM-ION

POWER REQUIREMENT: AC100 – 240V/50 -60 HZ GLOBAL COMPATIBILITY

DIMENSIONS: 22.9" L X 7.28" W X 7" H

GROUND CLEARANCE: 1.18"

PLATFORM HEIGHT: 4.33"

TIRE: NON-PNEUMATIC SOLID TIRE

BATTERY VOLTAGE: 36V

BATTERY CAPACITY: 4300 MAH

MOTOR: 2 X 350 W

SHELL MATERIAL: PC

CHARGE TIME: 2-4 HOURS

TROUBLESHOOTING

The Hoverboard has a self-examination feature to keep it functioning properly. In the event of a malfunction, follow these directions to perform a system reboot:



STEP 1: Place the Hoverboard on a flat surface

STEP 2: Align both halves

STEP 3: Align the Hoverboard so that it's parallel with the floor

STEP 4: Hold the Power Button until you hear one loud beep, then release. The front lights and the battery lights will start to flash. The front LED lights will quickly flash 5 times. The Hoverboard will now reset itself

STEP 5: Press the Power Button again to turn it off

STEP 6: Turn the Hoverboard on again. It is now ready to ride

WARRANTY / CUSTOMER SERVICE

Sharper Image branded items purchased from SharperImage.com include a 1-year limited replacement warranty. If you have any questions not covered in this guide, please call our Customer Service department at 1 (877) 210-3449. Customer Service agents are available Monday through Friday, 9:00 a.m. to 6:00 p.m. ET.

SHARPER IMAGE®

The SHARPER IMAGE® name and logo are registered trademarks.

©Sharper Image. All Rights Reserved.