



**Slushie Maker
SBL-1205
User Manual**



**PLEASE READ AND SAVE THESE
INSTRUCTIONS FOR FUTURE REFERENCE**

IMPORTANT SAFEGUARDS

When using any electrical product, always follow these basic safety precautions:



READ ALL INSTRUCTIONS BEFORE USE

WARNING:

1. To protect against electrical shock, do not submerge the appliance or allow the power cord to come in contact with water or any other liquid.
2. This appliance is not intended for use by persons (including children) with reduced physical, sensory or mental capabilities, or lack of experience and knowledge, unless they have been given supervision or instructions concerning use of the appliance by a person responsible for their safety.
3. Children should be supervised to ensure that they do not play with the appliance.
4. Never let the appliance operate unattended.
5. Remove the power cord from the electrical outlet when not in use, before assembling or disassembling parts and before cleaning. To unplug, grasp the plug and pull from the mains power outlet socket. Never pull from the power cord.
6. Never carry the appliance by the power cord or yank it to disconnect from electrical outlet, instead, grasp on the plug and pull to disconnect.
7. DO NOT operate the appliance with a damaged cord or plug, or after the appliance malfunctions, has been dropped or damaged in any manner.
8. If the power cord is damaged, it must be replaced by a qualified electrical person to avoid a hazard or the appliance must be disposed of.
9. DO NOT let the power cord hang over the edge of table or counter or touch hot surfaces such as the stove.
10. Always use the appliance on a dry, level surface. Sink, drain boards or uneven surfaces must be avoided.
11. Keep hands, hair, clothing, as well as utensils out of cup while processing to reduce the risk of severe injury to persons or damage to the appliance.
12. Avoid contact with moving parts.
13. DO NOT operate this appliance on or near any hot surface (such as gas or electric burner or in a heated oven).
14. The use of attachments or accessories not supplied with the product may cause fire, electric shock or personal injury.
15. DO NOT try to defeat the safety lock mechanism; make sure that the cup is properly loaded before operating the appliance.
16. DO NOT overfill.
17. THIS PRODUCT IS INTENDED FOR HOUSEHOLD USE ONLY. Do not use this appliance for anything other than its intended use. Do not use outdoors.
18. Check the voltage indicated on the appliance corresponds to the local mains voltage before you connect the appliance.

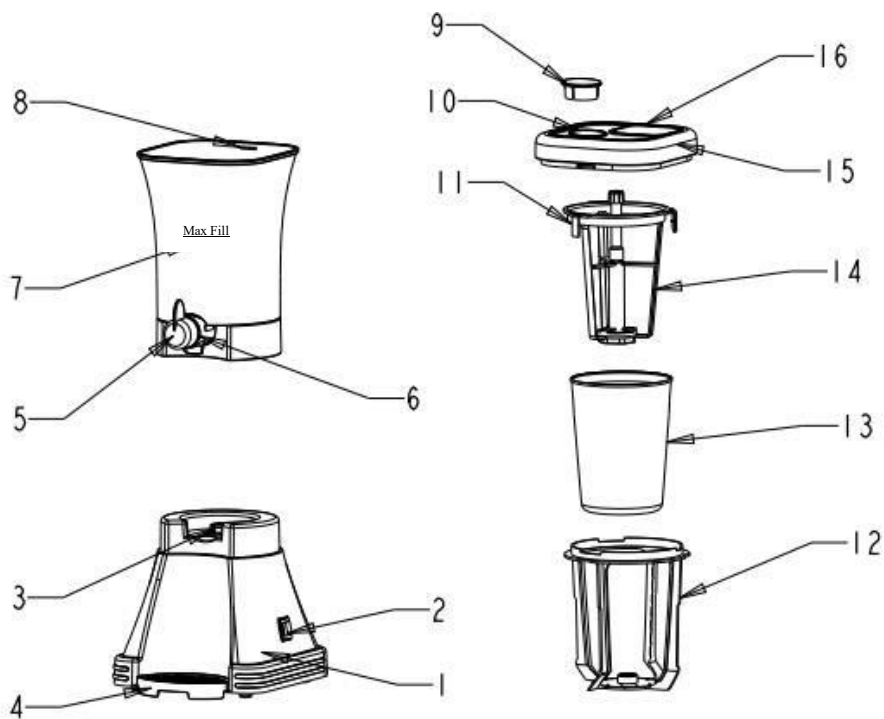
19. Never immerse the motor base in water or any other liquid, do not rinse it under the tap. Use only a moist cloth to clean the motor base.
20. Unplug the appliance immediately after use.
21. Keep the appliance out of the reach of children.
22. Fingers and foreign objects should not be put into the container and canister while in operation.
23. Always unplug the appliance before you start cleaning the appliance.
24. Do not attempt to repair or disassemble the appliance. There are no user-serviceable parts inside the appliance.
25. For cleaning, please refer to CLEANING AND STORAGE section.
26. Always disconnect the appliance from the mains power before approaching or changing parts.
27. The appliance is intended to be used in household and similar applications such as:
 - staff kitchen areas in shops, office and other working environments,
 - farmhouses,
 - by clients in hotels, motels and other residential type environments,
 - bed and breakfast type environments.
28. The Slushie container should be washed and thoroughly towel-dried before use.
29. Sharp objects will scratch and damage the inside of the containers. A rubber spatula or wooden spoon may be used when the appliance is unplugged and at off position.
30. Switch off the appliance and disconnect from supply before changing accessories or approaching parts that move in use.
31. IMPORTANT! The maximum continuous operating time is 30 minutes. Allow it to rest for at least 30 minutes before using it again.

WARNING! Misuse of the appliance may cause injury!

WARNING! Do not use an extension cord or a power board with this product.

**SAVE THESE INSTRUCTIONS
FOR HOUSEHOLD USE ONLY**

KNOW YOUR SLUSHIE MAKER



- | | |
|----------------------------|---------------------------------|
| 1. Motor Base | 9. Ice/Salt inlet Cap |
| 2. Off/Mix/Dispense switch | 10. Ice/Salt Inlet |
| 3. Drive Sprocket | 11. Ice Paddle Locking Latch |
| 4. Tray | 12. Slushie Paddles |
| 5. Tap | 13. Ice Canister |
| 6. Tap Handle | 14. Ice Paddles |
| 7. Slushie Container | 15. Canister Lid |
| 8. Locking Notch | 16. Drink and ingredients inlet |

IMPORTANT!

Please make sure that your appliance is not damaged and received with all the components shown above. Check everything carefully before use. If any part is missing or damaged, do not use. Return the product to place of purchase for replacement.

BEFORE FIRST USE

Note: When using the appliance for the first time, carefully remove all packaging.

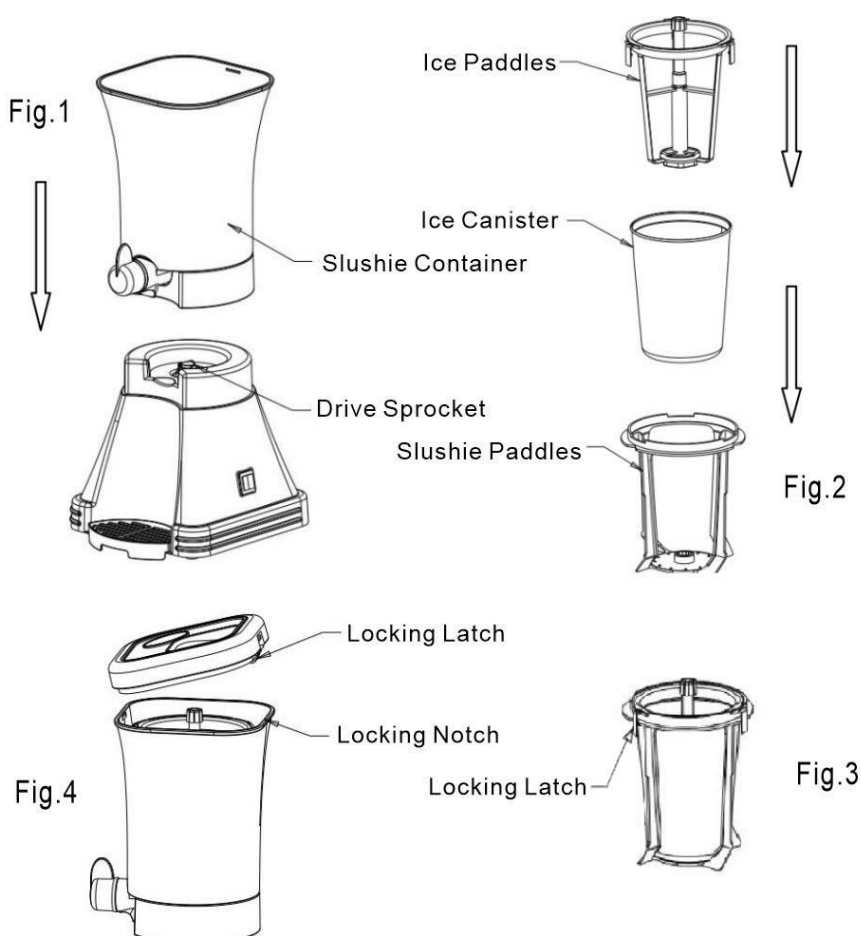
- Before using the product for the first time, wash all the parts (lid, ice canister and paddles, slushie paddles and container) with warm water and mild detergent, ensure that the tap is open to allow water to flow through. Dry thoroughly after washing.
- The drive sprocket can be wiped clean with a damp cloth.
- Clean the motor base with a damp cloth or sponge. Wipe dry with a soft dry cloth.

CAUTION: Never immerse the appliance in water or other liquids. Never use abrasive cleaners on any part of the product. Do not place any parts into a dishwasher.

Assembly

NOTE: Do not plug the power cord into the mains power supply until the unit is fully assembled.

- Put the slushie container on the motor base and push down into place. Ensure that the container is sitting correctly on the drive sprocket with the tap directly over the drink tray (Fig.1).
- Insert the ice canister into the Slushie paddles, then insert the ice paddles into the ice canister (Fig.2).
- The locking latches on the ice paddles should easily snap onto the slushie paddles (Fig.3).
- Place the canister assembly into the slushie container. Ensure that the ice canister assembly sits flush on the drive sprocket at the base of the slushie container.
- To secure the lid onto the slushie container, place on the front end first, then secure the rear locking latch onto the rear locking notch of the canister (Fig.4).
- Put the tray in place.
- Place the appliance on a flat, stable surface, the appliance is now ready for use.



USE YOUR SLUSHIE MAKER

- Make sure the switch stays at “O” and the tap stays at closed position.
- Put a glass on the tray. Connect the appliance to the mains power.
- Press the switch to the Mix position. The slushie assembly will start to rotate.
- Add the drink, sugar or other ingredients into the slushie container through the drink and ingredients inlet.

NOTE: Always start with liquid mixtures when preparation begins.
The drink with ingredients should not be beyond Max Fill mark on the container.

Fresh fruit drinks should be blended first to achieve optimum results. In addition, you may need to add more sweetener as natural fruit sugars lessen in taste when frozen.

CAUTION: Do not use the slushie maker to freeze liquids without any sugar (such as water) as this may damage the appliance. Water will freeze very quickly to the exterior of the ice canister and damage the unit.

Do not use stiff mixtures such as whipped cream or frozen liquids.

- Put a layer of ice cubes and a spoon of salt into the canister through ice/salt inlet. Then put another layer of ice cubes and a spoon of salt. Then a third time.
- Fill a spoon of water into the canister through ice/salt inlet.
- NOTE: Ice cubes can be added to the canister from time to time during operation.
- The ice level should be approximately 1 inch below the rim of the ice canister.

CAUTION: There is a risk that the slushie mixture will become contaminated if the ice level is beyond 1 inch below the rim of the ice canister.

- About 25 minutes later, the slushie mixture will reach the best consistency.

CAUTION: If after 30 minutes the mixture has not yet achieved the slushie consistency or has thawed again, do not continue.

- Press the switch to dispense position to serve the slushie mixture.
- Place a serving glass on the tray. Rotate the tap to pour position to get the slushie.

NOTE: Do not store slushies in the freezer or fridge. They should be consumed immediately.

- Press the switch to “O” position, disconnect the appliance from mains power after use.

TIPS:

- Regular square ice cubes work best.
- Place a cup or glass on the drink tray when the unit is running in case of dripping.
- Leave the unit ON for approximately 15-20 minutes, depending on the slushie mix used or until the mixture reached the desired consistency.
- Do not turn the unit Off during use as the mixture may thaw.
- Making slushie in a warm environment may lengthen the process.

- Add more ice cubes and salt if necessary.
- Smoothies can be made into slushies. However, the chilling/freezing time should be increased to achieve the creamy, frozen texture desired.
- Carbonated drinks can be used to make slushies such as cola, root beer, cream soda etc.
- It is best to chill most mixtures in the fridge or freezer for a few minutes before pouring into the slushie container as this will speed up the freezing/chilling process.
- If creating alcoholic drinks such as pina coladas or daiquiris, add the alcohol at the end of the process, as alcohol does not freeze and this will alter the results when added in with the mixture.
- Slushie mixture with high sugar content will reach the desired consistency more quickly than those with milk or a lower sugar content.
- Artificial sweeteners can be added instead of sugar. In this case, cool the liquid ingredients for approximately 10 minutes in the freezer. Lower sugar content drinks take longer to freeze. This process will help decrease the running time.

Possible reasons for the mixture not chilling/freezing:

- The ice canister was not cold enough; more ice and salt should have been added.
- The mixture was too warm.
- Alcohol was added to the mixture too early.

CLEANING AND STORAGE

CAUTION: Never immerse the appliance in water or other liquids. Never use abrasive cleaners on any part of the product. Do not place any parts into a dishwasher.

- Clean the slushie maker after each use.
- Remove the power cord from the power outlet socket and ensure the appliance come to a complete stop before cleaning.
- Clean the motor base with a damp cloth or sponge. Wipe dry with a soft dry cloth.
- The drive sprocket can be wiped clean with a damp cloth.
- Wash the cup in warm, soapy water, then rinse and dry thoroughly.
- Wash all the parts (lid, ice canister and paddles, slushie paddles and container) with warm water and mild detergent, ensure that the tap is open to allow water to flow through. Dry thoroughly after washing.

NOTE: Do not wash any part of the appliance in the dishwasher.

TECHNICAL SPECIFICATION

Voltage: 220-240V~ 50-60Hz

Power: 20W

RECIPES

Slushie Smoothies

For all smoothie recipes below add all the ingredients into the slushie container and allow the unit to run for approximately 20 – 25 minutes to achieve a slush like smoothie.

Orange Creamsicle

- 300ml Skimmed Milk
- 90ml. Orange Juice
- 90ml. Sunny Delight Orange Juice
- 1/4 tsp Vanilla Extract

Cappuccino Cooler

- 240ml. Chilled Espresso Coffee
- 60ml. Milk
- Sugar (to taste)

This recipe requires no more sugar than an average coffee.

Peachy- Keen Smoothie

- 120ml. Peaches
- 240ml. Pineapple Juice
- 60ml. Lemon Juice

NOTE: Mix the ingredients in a blender before adding to the smoothie maker.

Mango Madness

- 180ml. Pureed Mango
- 90ml. White Grape Juice
- 60ml. Skimmed Milk

Mix the ingredients together in a container or bowl before pouring into the slushie maker.

NOTE: Fresh fruit drinks should be blended first to achieve optimum results.

Juicy Slushies

- Old Fashioned Lemon Ice
- 300ml. Chilled Water
- 60ml. Fresh Lemon Juice
- 4 tsp Sugar
- 1/8 tsp Lemon Rind Peel

Tropical Fruit Cup

- 60ml. Lemon Juice Pulp
- 60ml. Pineapple Juice
- 90ml. Grape Juice
- 90ml. Lemon- Lime Soda

O. J.G. Slugger

- 360ml. Grape Juice
- 120ml. Orange Juice

Breakfast Zing

- 240ml. Grapefruit juice
- 60ml. Lemon Juice
- 60ml. Apple Juice

Mellowed Yellow

- 420ml. Lemon-Lime Juice
- 60ml. Pineapple Juice

Frozen Apple Cider

- 360ml. Apple Cider
- 1/4 tsp Cinnamon

Sunny Frost Tea

- 300ml. Iced Tea
- 60ml. Lemonade
- 60ml. Orange Juice
- 60ml. Grapefruit Juice

Frozen Daiquiri

- 1 cup Fresh, Sliced Strawberries
- 1/2 cup Strawberry Daiquiri Frozen Ice Mix
- 3/4 cup Water
- 1/4 cup Orange Juice

NOTE: Mix all the ingredients in a blender, then place in the slushie maker. For alcohol based slushie, dispense into a glass filled with the alcohol.

12 Month Warranty

Thank you for your purchase.

Your new product is warrantied to be free from defects in materials and workmanship for the period stated above, from the date of purchase, provided that the product is used in accordance with accompanying recommendations or instructions where provided. This warranty is in addition to your rights under the Australian Consumer Law.

For New Zealand customers, this warranty is in addition to statutory rights observed under New Zealand legislation.

We will provide you with your choice of a refund, repair (where possible) or exchange (availability dependent) for this product if it becomes defective within the warranty period. The business will bear the reasonable expense of claiming the warranty.

This warranty will no longer apply where the defect is a result of alteration, accident, misuse, abuse or neglect.

Please retain your receipt as proof of purchase and contact our Customer Service Centre as listed below, for the entity you purchased this product from, for any difficulties with your product. Warranty claims and claims for expense incurred in returning this product can be addressed to the respective Customer Service Centre.

Our goods come with guarantees that cannot be excluded under the Australian Consumer Law. You are entitled to a replacement or refund for a major failure and compensation for any other reasonably foreseeable loss or damage. You are also entitled to have the goods repaired or replaced if the goods fail to be of acceptable quality and the failure does not amount to a major failure.

Contact for Kmart purchases	Contact for Target purchases
Kmart Australia Ltd. C/- Customer Service Centre 690 Springvale Road, Mulgrave Vic 3170 Customer Service: 1800 124 125 (Australia) or 0800 945 995 (New Zealand) or via Customer Help at kmart.com.au	Target Australia Pty Ltd C/- Customer Service Centre 2 Kendall Street, Williams Landing, Vic, 3027 Customer Service: 1300 753 567 or via Customer Help at target.com.au/help/contact-us