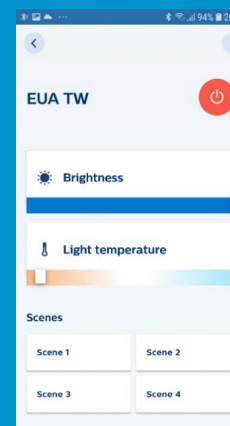


PHILIPS

Wireless Connected
Systems

MasterConnect

Philips MC Control App



Philips MC Control App for End Users

September 2022

Published Versions

v2022.09.19 – Update (System requirements of supported devices)

Contents

Install Philips MC control app	4
Connect to lighting system with Philips MC control app	5
Setting of lighting parameters	6
Scenes	7
Removing a group from the overview	8
About app	9
Supported devices	10
Known Limitations	11
Annex - Generating QR Code	12
References	14
Disclaimer	15

Install Philips MC control app

Purpose

Installation of the Philips MC control app on your smartphone. This app will enable end-user control of a lighting system set up in Philips MasterConnect app.

How to do?

The Philips MC control app is available on Google Play Store (for Android-based phones) and on App Store (for iPhones).



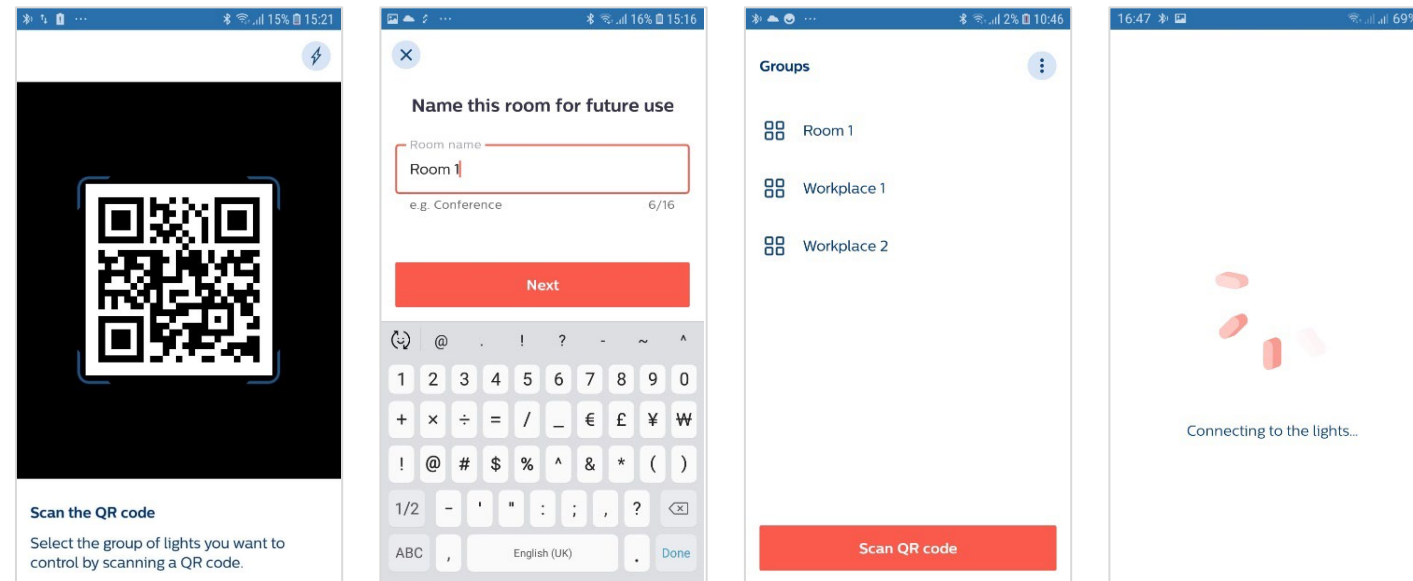
Connect to lighting system with Philips MC control app

Purpose

Philips MC control app allows control of a group of lights by an end user.

How to do?

- The QR code of the lighting must have been provided by the installer in advance, using the “QR-code generation” functionality in the Philips MasterConnect app – see installer manual.
- Open the Philips MC control app and scan the QR code of the group you want to control.
- Set a name for future use of the group and the Philips MC control app is ready to control the lights.
- Alternatively, open one of the groups that have been generated earlier. The device will connect to the lights.



Remarks

- Multiple QR codes of different groups can be scanned and stored.
- End-user should allow access to “Camera” and enable “Location services” on the smartphone.
- To actively control the lights, the smartphone or tablet which has the Philips MC control app, must be in range.

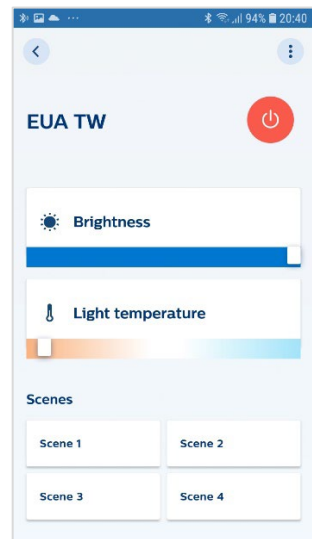
Setting of lighting parameters

Purpose

To adjust the illumination to a desired level or setting

How to do?

- With the red button you can switch the lighting on and off.
- By moving the sliders, the brightness and the white tone can be adjusted.
- Preconfigured light scenes can be chosen.



Remarks

- Multiple users/phones can connect to the lighting and control it using the same QR code. The number of phones must not exceed the number of lights in the group.

Scenes

- Four scenes can be selected. They come with the following default settings:

Scene	Dim level	Color Temperature
1	30%	3000 K
2	80%	5500 K
3	60%	3000 K
4	20%	5000 K

- Scenes 3 and 4 are fixed.
- The settings of scenes 1 and 2 might have been modified by an installer using a 4B switch, see Philips MasterConnect app – Installer Manual.

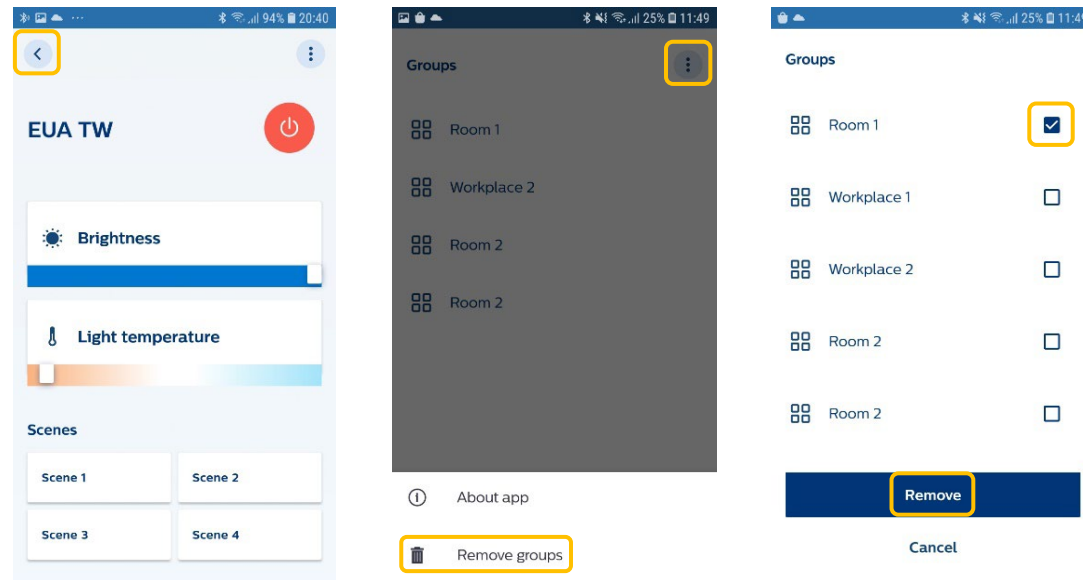
Removing a group from the overview

Purpose

Removing a *group* from the app

How to do?

- Press the back button in the left corner.
- Click on the 3 dots.
- Select the group or zone that needs to be removed and press “Remove”.



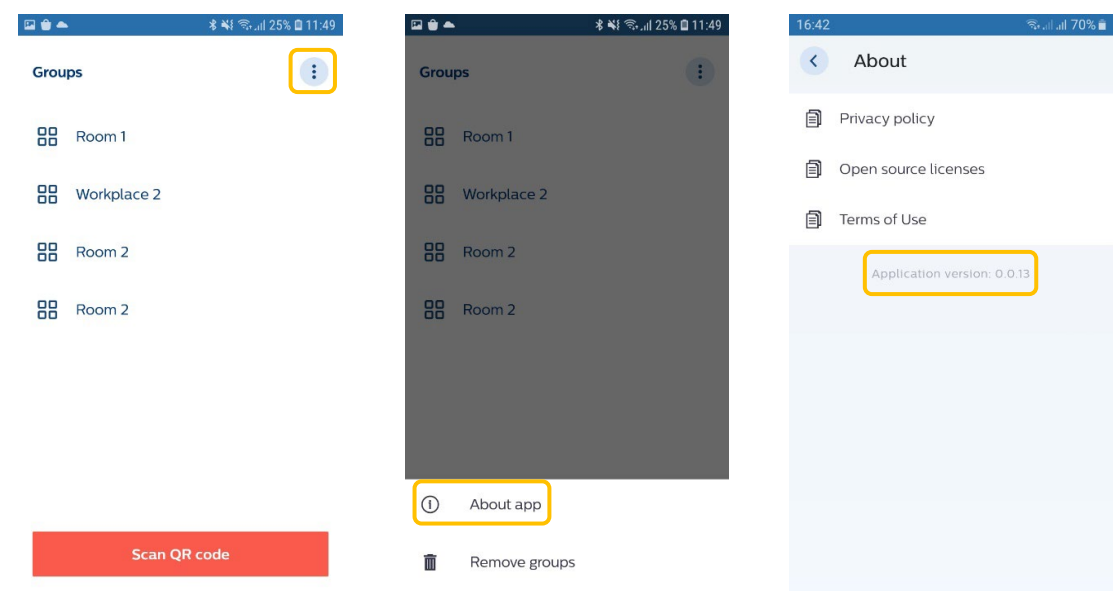
About app

Purpose

Provides information on

- Version of the app
- Privacy policy
- Information on Open-Source licenses
- Terms of use

How to do?



Supported devices

The Philips MC control app for Bluetooth control of a wireless lighting system can be installed on modern smartphones and tablets with Android or iOS operating system.

Minimum requirements:

- Android 8 or newer
- iOS 14 or newer
- Bluetooth 4.2 or newer

Recommended requirements:

- Android 10 or newer
- iOS 14 or newer
- Bluetooth 5 or newer

Recommended devices:

LG Nexus 5X	Xiaomi Redmi Note 8 Pro
LG Nexus 6P	Xiaomi Redmi 8A
Samsung S7 Edge	iPhone 7
Samsung S8	iPhone 8
Samsung S9	iPhone X
Samsung S10	iPhone XR
Google Pixel 2	iPhone 11

Remarks

- System performance can vary for different combinations of smartphone, version of the operating system, version of the BLE device and how it is implemented in the phone model. Alterations from industry can have an impact too. Therefore, although we expect good performance in most cases, Signify does not guarantee expected performance of the Master Connect App. It is recommended to test your mobile device on a wireless lighting system.
- Huawei phones are not officially supported.

Known Limitations

- It is not supported to mix tunable white and single-color white lights in one group.
- If the firmware of the lights is FW 1.0.5 (sensors sold until July 2020) dimming is limited to 34%.

Annex - Generating QR Code

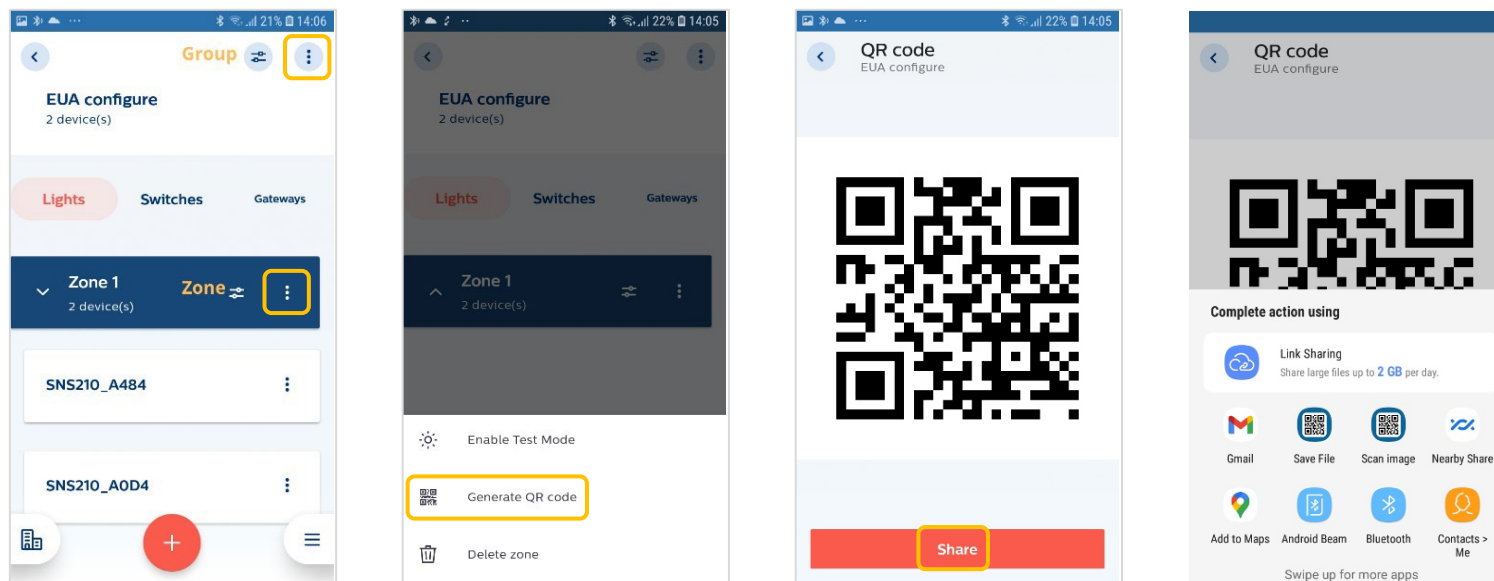
QR codes can be generated through Philips MasterConnect app. For details see Philips MasterConnect app - Installer Manual.

Purpose

To provide lighting control for end users via smartphone or tablet.

How to do?

- Generating a QR code can be done on group or zone level.
- To generate QR code for a zone click on the 3 dots on the zone tab and select "Generate QR Code."
- To generate QR code for a group click on the 3 group dots.



- A QR code is ready to be shared and can be printed for placement at the intended application area, making it accessible for scanning by an end-user.

Remarks

- It is not supported to mix tunable white and single-color white lights in one group.
- For QR generation the installer needs to be in Bluetooth range of the lights.
- Within one group QR codes should be generated either for the whole group or for one or more zones, but not for the group AND a zone.

References

Website

<https://www.lighting.philips.co.uk/oem-emea/support/technical-downloads>

Disclaimer

©2021 Signify Holding B.V. All rights reserved.

Note that the information provided in this document is subject to change.

This document is not an official testing certificate and cannot be used or construed as a document authorizing or otherwise supporting an official release of a luminaire. The user of this document remains at all times liable and responsible for any and all required testing and approbation prior to the manufacture and sale of any luminaire.

The recommendations and other advice contained in this document, are provided solely for informational purposes for internal evaluation by the user of this document. Signify does not make and hereby expressly disclaims any warranties or assurances whatsoever as to the accuracy, completeness, reliability, content and/or quality of any recommendations and other advice contained in this document, whether express or implied including, without limitation, any warranties of satisfactory quality, fitness for a particular purpose or non-infringement. Signify has not investigated, and is under no obligation or duty to investigate, whether the recommendations and other advice contained in this document are, or may be, in conflict with existing patents or any other intellectual property rights. The recommendations and other advice contained herein are provided by Signify on an “as is” basis, at the user’s sole risk and expense.

Specifically mentioned products, materials and/or tools from third parties are only indicative and reference to these products, materials and/or tools does not necessarily mean they are endorsed by Signify. Signify gives no warranties regarding these and assumes no legal liability or responsibility for any loss or damage resulting from the use of the information thereto given here.



© 2022 Signify Holding. All rights reserved. The information provided herein is subject to change, without notice. Signify does not give any representation or warranty as to the accuracy or completeness of the information included herein and shall not be liable for any action in reliance thereon. The information presented in this document is not intended as any commercial offer and does not form part of any quotation or contract.

Philips and the Philips Shield Emblem are registered trademarks of Koninklijke Philips N.V. All other trademarks are owned by Signify Holding or their respective owners.

09/2022
Data subject to change

www.lighting.philips.co.uk/oem-emea/products/connected-lighting