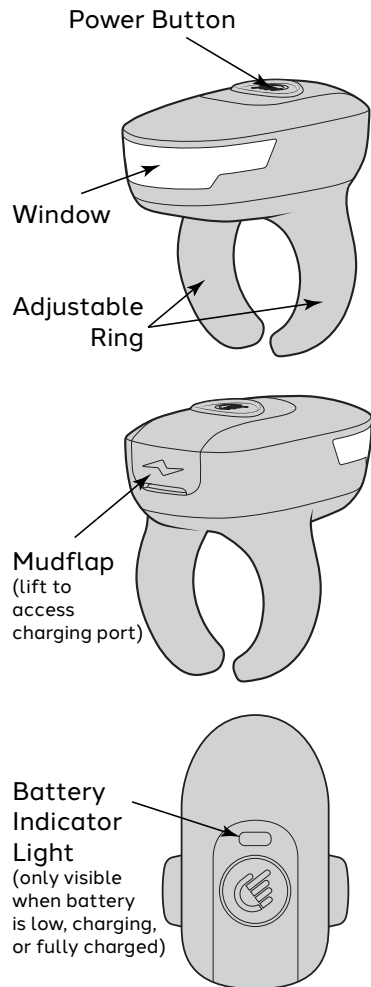


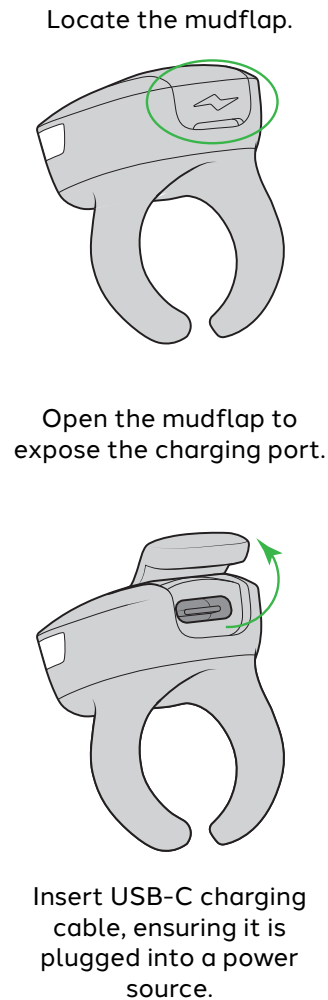


QUICK START GUIDE

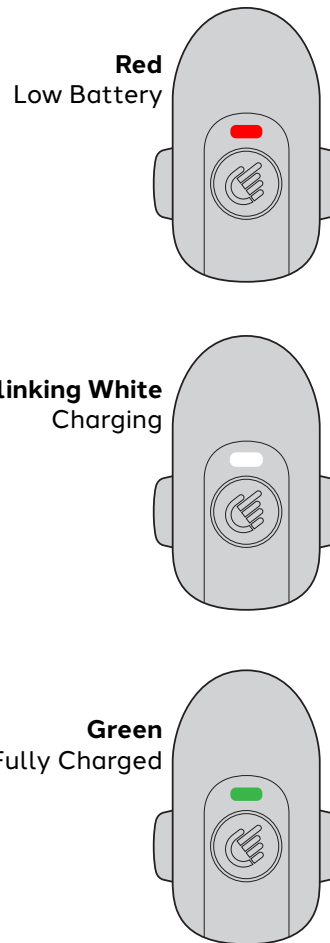
FEATURE OVERVIEW



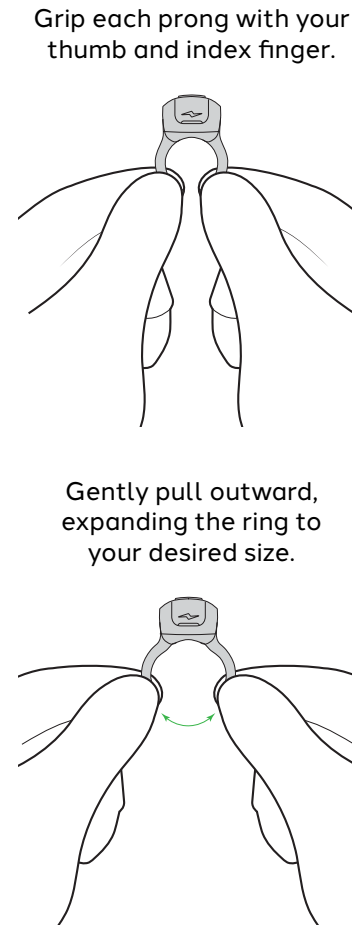
HOW TO CHARGE



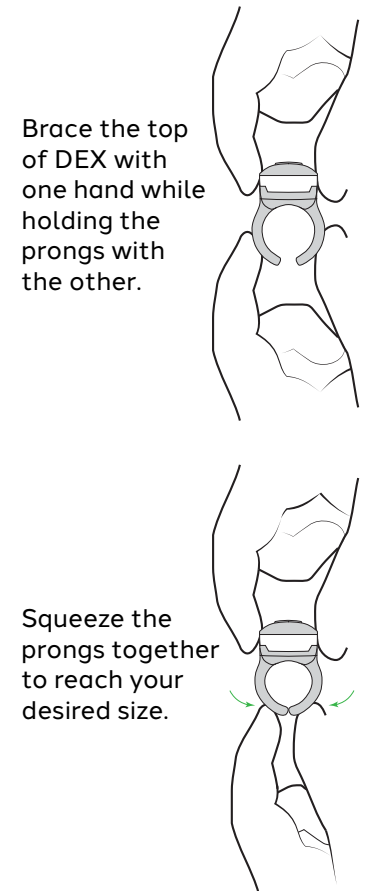
BATTERY INDICATORS



EXPANDING THE RING



CONTRACTING THE RING

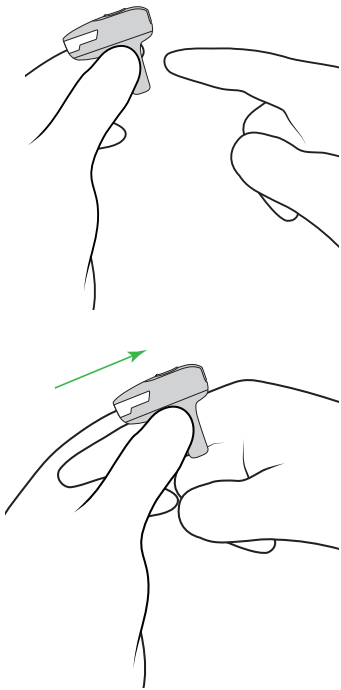




QUICK START GUIDE

FITTING AND WEARING

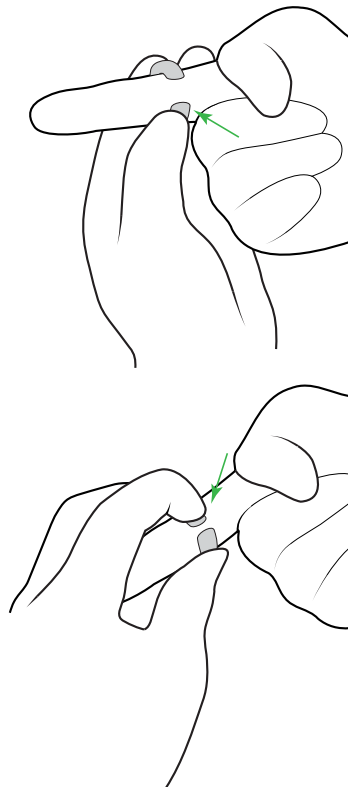
After finding your desired ring size, slide ring over any finger or thumb.



NOTE: DEX FINGERLIGHT™ can be worn on any finger or thumb in any position.

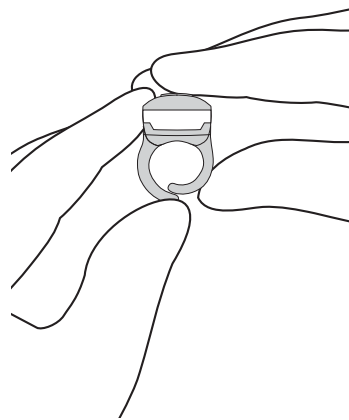
TIGHTENING THE FIT

To tighten the fit of the ring, press the tips of the prongs into your finger or thumb.



FOR SMALL FINGERS

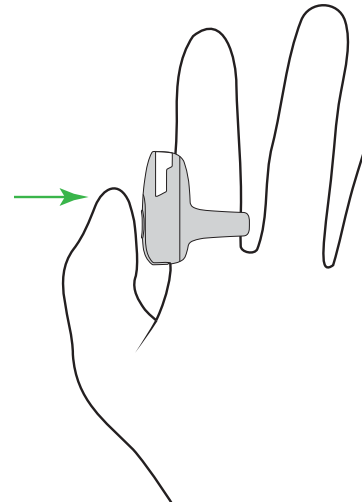
If you are having difficulty fitting the ring over your finger, overlap the prongs to create a tighter fit.



NOTE: Avoid creasing or kinking the prongs when overlapping.

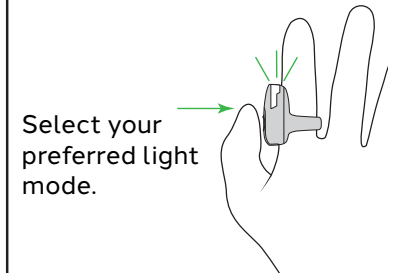
ONE-HANDED USE

For one-handed use, position the DEX FINGERLIGHT™ on the side of your index finger toward your thumb. Use your thumb to operate the button.



NOTE: One-handed use can also be achieved if worn on the top of the thumb, the inside of the thumb, or the underside of any finger, making DEX FINGERLIGHT™ a versatile tool for all of your needs.

MODE MEMORY



Wait 3 seconds...

