

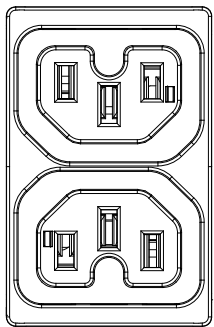
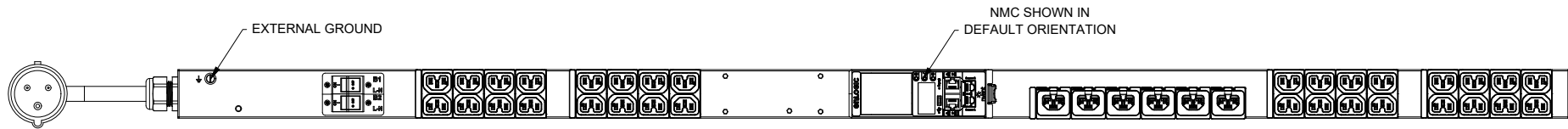
TECHNICAL SPECIFICATIONS	
UNIT TYPE:	MONITORED INPUT
ORIENTATION:	VERTICAL, 0U MID
OUTLET QTY & TYPE:	(32)C13/C15, (6)C13/C15/C19
INPUT VOLTAGE:	200-240VAC
INPUT CURRENT:	32A
BREAKER QTY & TYPE:	(2) 16AMP, SINGLE-POLE, 5KA
INPUT PHASE:	SINGLE-PHASE
RATED POWER:	7.4 KVA
INPUT PLUG:	SEE NOTE 7
INPUT POWER CORD:	SEE IDENTIFICATION TABLE
FEATURES	
METERING ACCURACY	+/-1% TO ISO/ IEC 62052-21
METERING ATTRIBUTES	VOLTAGE(V), CURRENT(A), APPARENT POWER(kVA), REAL POWER(kW), POWER FACTOR, ENERGY(kWh)
METERED COMPONENTS	INPUT(PHASE), CIRCUIT BREAKERS
REMOTE OUTLET SWITCHING	N/A
ENVIRONMENTAL CONDITIONS	
OPERATING TEMPERATURE	-5 TO 60 C (23 TO 140 F)
STORAGE TEMPERATURE	-20 TO 60 C (-4 TO 140 F)
HUMIDITY (OPERATING/STORAGE)	5-90% RH / 5-95% RH; NON-CONDENSING
MAX OPERATING ELEVATION, ABOVE MSL	3000M(9840FT)
COMPLIANCE	
SAFETY&ENVIRONMENTAL	RoHS COMPLIANT

IDENTIFICATION TABLE		EN1355-		*	*	*	*	HP
MODEL IS SHOWN IN DEFAULT CONFIGURATION. FOR OPTIONAL CONFIGURATIONS, USE ITEM IDENTIFIER CODE IN PLACE OF EACH ASTERISK. ORDERABLE BASED ON FORMAT: EN1355-***HP		INPUT PLUG		CHASSIS COLOR		CORD OPTION		ORIENTATION
		(DEFAULT) 332P6 IP44=0		(DEFAULT) BLACK = 0 BLUE = B RED = R WHITE = W GREEN = G YELLOW = Y		(DEFAULT) 3m [10'] = 0 1m [3.2'] = 1 2m [6.6'] = 2		(DEFAULT) TOP FEED = 0 BOTTOM FEED = 2
		332P6 IP67=J		ORANGE = A		0.5m [1.6'] = A 1.8m [6'] = F 1.5m [4.9'] = B 1.2m [4'] = G 2.5m [8.2'] = C 3.65m [12'] = H 3.5m [11.4'] = D 4m [13.2'] = 4 4.5m [14.7'] = E 5m [16.4'] = 5 6m [20'] = 6		
OPTIONS LISTED ON THIS ROW ARE NON STANDARD, CONTACT SALES FOR ADDITIONAL INFORMATION								

- NOTES:
- INSTALLATION SHALL COMPLY WITH ALL APPLICABLE NATIONAL, STATE AND LOCAL CODES.
 - PRIMARY DIMENSIONS ARE IN MILLIMETERS. SECONDARY DIMENSIONS ARE IN [INCHES]
 - UNIVERSAL MOUNTING BRACKET IS AN ALTERNATIVE MOUNTING METHOD TO THE TOOLESS MOUNT FOR 3RD PARTY ENCLOSURES. BRACKET IS PROVIDED WITH THE UNIT.
 - DETAILED INSTALLATION INSTRUCTIONS CAN BE FOUND IN THE QUICK START GUIDE
 - CONNECT EXTERNAL EARTH GROUND TO THE 10-32 SIZE THREADED NUT
 - SEE PRODUCT DOCUMENTATION FOR FURTHER INFORMATION
 - INPUT PLUG CONFIGURATION (SEE IDENTIFICATION TABLE) FOR DUAL-RATED UNITS, NEMA PLUGS ARE NAM RATED ONLY AND CAPTIVE AUS/NZ PLUGS ARE EMEA RATED ONLY

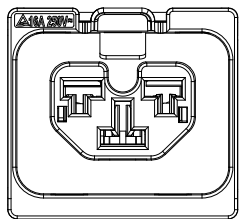
THIS DRAWING AND SPECIFICATIONS HEREIN ARE THE PROPERTY OF CIS GLOBAL AND SHALL NOT BE COPIED, REPRODUCED OR USED IN WHOLE OR IN PART, AS THE BASIS FOR THE MANUFACTURE OR SALE OF ITEMS WITHOUT WRITTEN PERMISSION FROM CIS GLOBAL. THIS DRAWING IS BASED UPON LATEST AVAILABLE INFORMATION AND IS SUBJECT TO CHANGE WITHOUT NOTICE

	E1	INITIAL DRAFT REVIEW				2023/05/24	FYZ		
ECN/ECO	REV.	DESCRIPTION				DATE	APPROVED		
REVISIONS									
TITLE : Metered		UNLESS NOTED, DIMENSIONS ARE IN MILLIMETERS & TOLERANCES ARE: X ±1 MM X" ±1° X.X ±0.5 MM X.X" ±0.5° X.XX ±0.20 MM Ø X.X ±0.3 MM Ø X.XX ±0.10 MM BRACKETED DIMENSIONS ARE IN INCHES FOR REFERENCE ONLY				PART NO: EN1355-WXYZHP_DA		REV. E1	
						DRAWN BY: FYZ		2023/05/24	
						ENGINEER: LJB		2023/05/24	
						APPROVED BY: Hanson		2023/05/24	
						PROJECT : enLOGIC		SCALE : N/A	
		THRID ANGLE PROJECTION							
		INTERPRET PER ASME Y14.5M-1994							



C13/C15 COMBO
10A(EU)/12A(NA/JP), 250V MAX
RATED OUTPUT

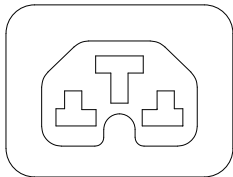
RECEPTACLE



C13/C15/C19 COMBO
16A, 250V MAX
RATED OUTPUT

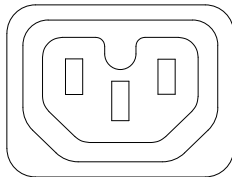
STANDARD
RECEPTACLES

RECEPTACLE



C13/C15/C19 COMBO
16A, 250V MAX RATED OUTPUT

RECEPTACLE



C13/C15 COMBO
10A(EU)/12A(NA/JP), 250V MAX
RATED OUTPUT

INPUT PLUG

(DEFAULT)



IEC 60309, 2P+E 6H 3W
IP44 (SPLASHPROOF)
32A, 200-250V MAX RATED INPUT

OPTIONAL

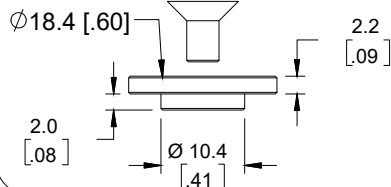


IEC 60309, 2P+E 6H 3W
IP67 (WATERTIGHT)
32A, 200-250V MAX RATED INPUT



MOUNTING BUTTON

BUTTON MOUNTING SCREW
(INCLUDED)



NOTES :

1. INSTALLATION SHALL COMPLY WITH ALL APPLICABLE NATIONAL, STATE AND LOCAL CODES.
2. SEE PRODUCT DOCUMENTATION FOR FURTHER INFORMATION



THIS DRAWING AND SPECIFICATIONS HEREIN ARE THE PROPERTY OF CIS GLOBAL AND SHALL NOT BE COPIED, REPRODUCED OR USED IN WHOLE OR IN PART, AS THE BASIS FOR THE MANUFACTURE OR SALE OF ITEMS WITHOUT WRITTEN PERMISSION FROM CIS GLOBAL. THIS DRAWING IS BASED UPON LATEST AVAILABLE INFORMATION AND IS SUBJECT TO CHANGE WITHOUT NOTICE

	E1	INITIAL DRAFT REVIEW			2023/05/24	FYZ	
ECN/ECO	REV.	DESCRIPTION			DATE	APPROVED	
REVISIONS							
TITLE : Metered		UNLESS NOTED, DIMENSIONS ARE IN MILLIMETERS & TOLERANCES ARE: X ±1 MM X" ±1" X.X ±0.5 MM X.X" ±0.5" X.XX ±0.20 MM Ø X.X ±0.3 MM Ø X.XX ±0.10 MM BRACKETED DIMENSIONS ARE IN INCHES FOR REFERENCE ONLY			PART NO: EN1355-WXYZHP_DA		REV. E1
					DRAWN BY: FYZ		2023/05/24
					ENGINEER: LJB		2023/05/24
					APPROVED BY: Hanson		2023/05/24
					SCALE : N/A		SHEET 2 OF 3
PROJECT : enLOGIC							
⊕ ≡ THRID ANGLE PROJECTION							
		INTERPRET PER ASME Y14.5M-1994					

enLOGIC

RACK Power Distribution Unit

Made In China

Metered

SKU #: EN1355-0000HP

Model #:

INPUT: 200-240VAC,1PHASE,50/60HZ,32A

OUTPUT: C13/C15 COMBO;200-240VAC,10A per outlet

C13/C15/C19 COMBO;200-240VAC,16A max per outlet

32A Total

Only for sample

SKU#:

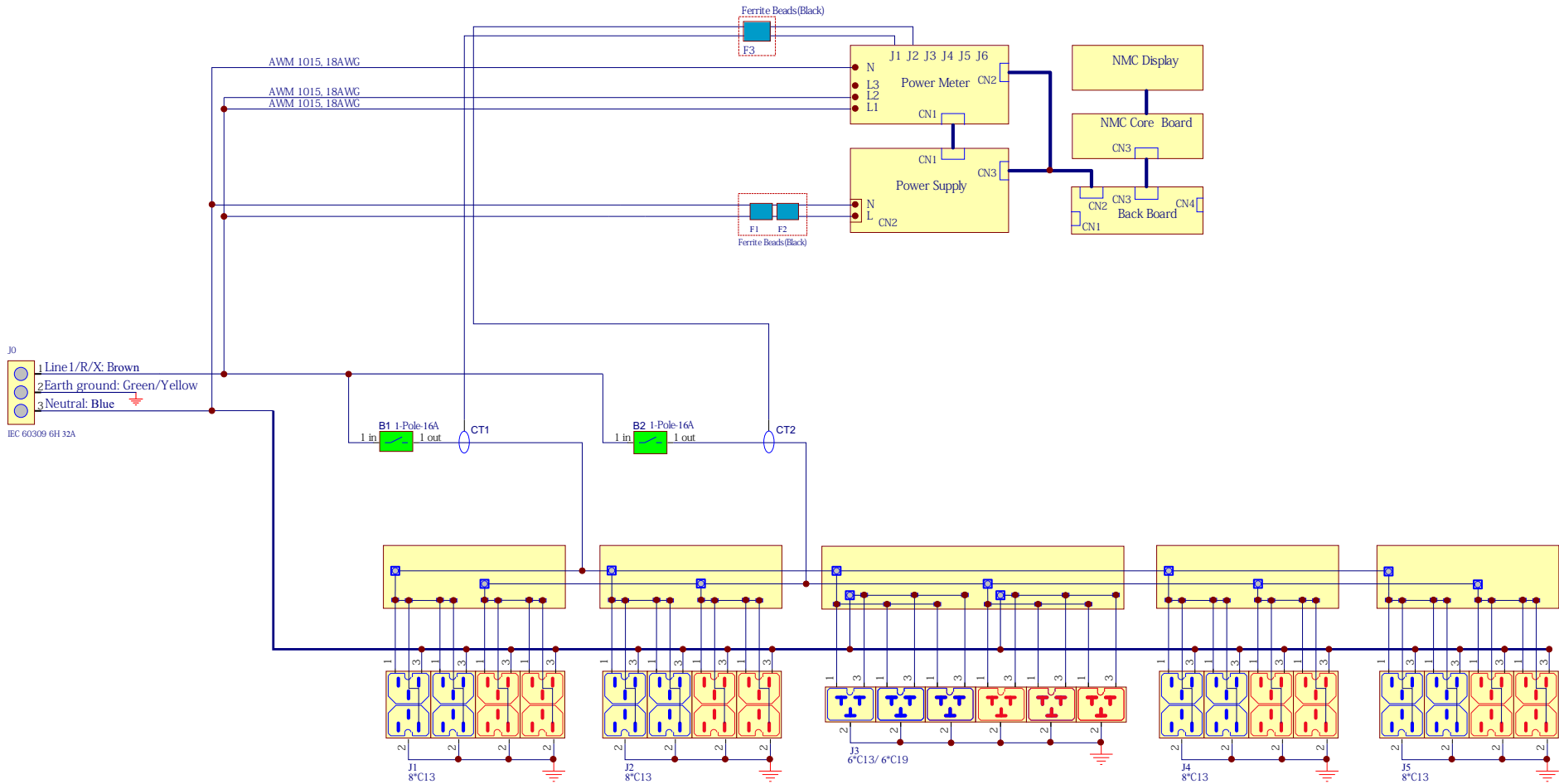
EN1355-0000HP

Serial Number

CNXXXXXXXX

- NOTES:
- 1.INTERNAL WIRING
- WIRE TYPE: UL AWM 1015,10 & 12 & 18 AWG
- LINE 1/R/X COLOR: BROWN
- NEUTRAL COLOR: BLUE
- EARTH GROUND COLOR: GREEN STRIPE
- 2.FOR FINISHED GOOD PART NUMBER SEE IDENTIFICATION

COMPLIANCE LABEL



INTERNAL WIRING SCHEMATIC DIAGRAM

- NOTES:
1. INSTALLATION SHALL COMPLY WITH ALL APPLICABLE NATIONAL, STATE AND LOCAL CODES.
 2. SEE PRODUCT DOCUMENTATION FOR FURTHER INFORMATION.
 3. THIS DRAWING DEPICTS THE POWER SYSTEM CONNECTIONS AND IS NOT REPRESENTATIVE OF THE PHYSICAL LAYOUT. PLEASE REFER TO MECHANICAL DRAWINGS FOR PHYSICAL LAYOUT.

enLOGIC

by nvent

THIS DRAWING AND SPECIFICATIONS HEREIN ARE THE PROPERTY OF CIS GLOBAL AND SHALL NOT BE COPIED, REPRODUCED OR USED IN WHOLE OR IN PART, AS THE BASIS FOR THE MANUFACTURE OR SALE OF ITEMS WITHOUT WRITTEN PERMISSION FROM CIS GLOBAL. THIS DRAWING IS BASED UPON LATEST AVAILABLE INFORMATION AND IS SUBJECT TO CHANGE WITHOUT NOTICE

	E1	INITIAL DRAFT REVIEW				2023/05/24	FYZ																											
ECN/ECO	REV.	DESCRIPTION				DATE	APPROVED																											
REVISIONS																																		
TITLE : Metered		UNLESS NOTED, DIMENSIONS ARE IN MILLIMETERS & TOLERANCES ARE: <table><tr><td>X</td><td>±1</td><td>MM</td><td>X"</td><td>±1°</td></tr><tr><td>X.X</td><td>±0.5</td><td>MM</td><td>X.X"</td><td>±0.5°</td></tr><tr><td>X.XX</td><td>±0.20</td><td>MM</td><td></td><td></td></tr><tr><td>Ø X.X</td><td>±0.3</td><td>MM</td><td></td><td></td></tr><tr><td>Ø X.XX</td><td>±0.10</td><td>MM</td><td></td><td></td></tr></table>				X	±1	MM	X"	±1°	X.X	±0.5	MM	X.X"	±0.5°	X.XX	±0.20	MM			Ø X.X	±0.3	MM			Ø X.XX	±0.10	MM			PART NO: EN1355-WXYZHP_DA		REV. E1	
						X	±1	MM	X"	±1°																								
						X.X	±0.5	MM	X.X"	±0.5°																								
						X.XX	±0.20	MM																										
						Ø X.X	±0.3	MM																										
Ø X.XX	±0.10	MM																																
DRAWN BY: FYZ		2023/05/24																																
ENGINEER: LJB		2023/05/24																																
APPROVED BY: Hanson		2023/05/24																																
PROJECT : enLOGIC		BRACKETED DIMENSIONS ARE IN INCHES FOR REFERENCE ONLY				SCALE : N/A		SHEET 3 OF 3	SIZE: A3																									
		THRID ANGLE PROJECTION																																
		INTERPRET PER ASME Y14.5M-1994																																