



# **NVMe cloning station USB3.1 Gen2 Type-C NVMe M.2 SSD enclosure**



**Quick Installation Guide**  
DA-71545-1

## Description

The DIGITUS® Dual NVMe Docking Station DA-71545-1 offers a powerful storage solution for IT professionals and enthusiasts. With space for two M.2 NVMe SSDs (up to 4 TB per slot), it enables high-speed data transfers and an integrated offline cloning function that allows easy duplication of data carriers at the touch of a button.

## Feature Benefits

- Dual NVMe storage – Support for two M.2 SSDs with up to 4 TB each for maximum storage capacity.
- Offline cloning function – Data cloning without a PC connection, simply by pressing a button.
- Lightning-fast transfer – USB 3.2 Gen2 connection with a speed of up to 10 Gbps.
- Wide compatibility – Supports M-Key and B+M-Key NVMe SSDs in 2242, 2260, 2280 & 22110 formats.
- Universal usability – Ideal for PCs, notebooks, NAS, smart TVs, gaming consoles and routers with USB-C
- Simple operation – Plug & play without driver installation for immediate use
- Hot-swap support: Inserting and removing SSDs during operation
- LED indicators: Progress of the cloning process (25%, 50%, 75%, 100%)

## Technical Features

Capacity	Max. 4 TB per Box
----------	-------------------

Supported formats	2242, 2260, 2280 & 22110 / M-Key, B & M-Key SSDs (NVMe)
USB-C connections	1 x Data USB-C 3.2 Gen2
Maximum transfer rate USB-C	10 Gbps
Modes	Clone and dual mode
Applications	PC, notebook, TV, router or gaming console (with USB-C connection)
Storage formats	NTFS, FAT, FAT32
Input voltage USB-A power adapter	100 - 240 V AC / 50/60 Hz, 0.6 A – Euro plug: Type A (CEE 7/16)
Power supply via DC port	5 V / 3 A
Systems	Windows 11/10/8/8.1/7/XP, macOS 10.0 or higher
Dimensions (W x D x H)	7.9 x 7.7 x 1.8 cm
Weight	152 g
Material	ABS
Color	Grey
Specials	<ul style="list-style-type: none"> <li>• Supports Hot Swap (Plug in and eject during operation)</li> <li>• Offline clone function by pressing a button (possible without PC),</li> <li>• LED indicators for copying progress (25%, 50%, 75%, 100%)</li> </ul>

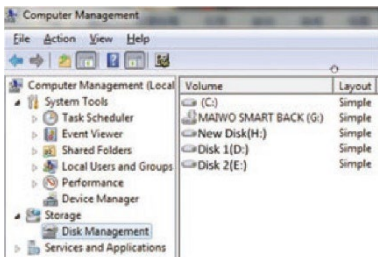
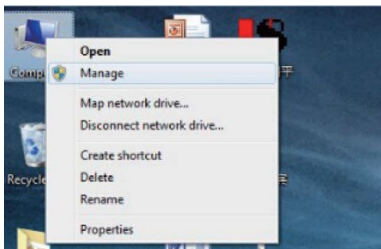
## Product Details



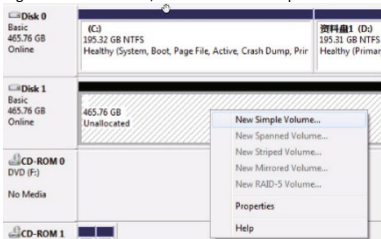
1	Clone button	4	Data type C
2	M.2 NVMe SSD2	5	M.2 NVMe SSD1
3	DC Power	6	Clone Indicator light

## Basic Functions

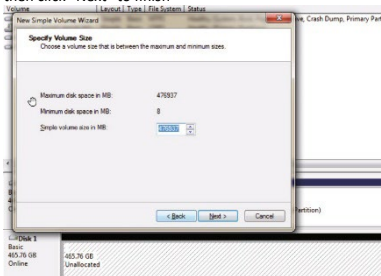
- Insert NVMe SSD with vertical direction, connect USB-C cable with data type C port and PC USB port
- AC Plug power adapter (workable with one SSD or two SSD)
- View “Computer-Manager-Disk Management” to find the new disk



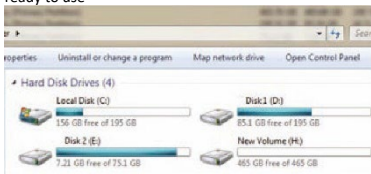
- Right click the “Disk 1”, then click “New Simple Volume”



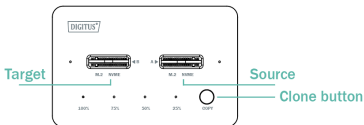
- According to the instruction, choose the size of partition, then click “Next” to finish



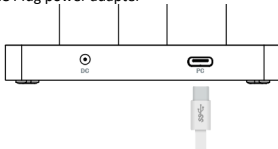
- Then you can find the new hard disk in the “Computer”, it is ready to use



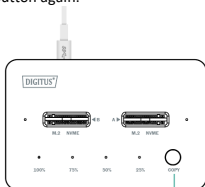
- Connect two NVMe SSD
- (Source SSD capacity must be  $\leq$  Target SSD)



- AC Plug power adapter

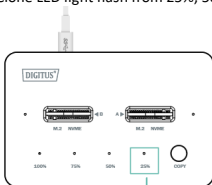


- Pressing clone button for several seconds, till clone LED light 25% flash, till all clone LED lights on and then short press the button again.



Keep pressing for 5 ~10s

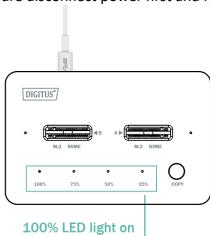
- Clone LED light flash from 25%, 50%, 75% and 100%



25% LED light on



- It means that clone completed when 100% illuminate and all LEDs are off finally (Tip: when connect with PC again, make sure disconnect power first and follow operation as PC mode)



Hereby Assmann Electronic GmbH, declares that the Declaration of Conformity is part of the shipping content. If the Declaration of Conformity is missing, you can request it by post under the below mentioned manufacturer address.

[info@assmann.com](mailto:info@assmann.com)

Assmann Electronic GmbH  
Auf dem Schüffel 3  
58513 Lüdenscheid  
Germany

