

DYNAMO

Monitor Arm



Dynamo

Ergonomics - Dynamic Monitor arm

CMS Dynamo is a dynamic monitor arm intuitively designed to deliver seamless handling across installation, mounting and adjusting.

Developed to move with you, Dynamo effortlessly rotates, pivots and extends, enabling tool-less and absolute adjustment to minimise eye and posture strain.

The detachable VESA mounting plate is easily adaptable to support Laptops, MacBook, Thin-Client PC and Tablets, making it ideal for a host of applications, from commercial workstations, home office, retail and general areas requiring continual adjustment.

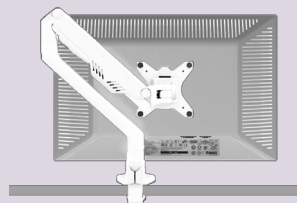
For curved screens and thin-client, mounting the Dynamo HD Tilter is an added accessory required to support the changing workplace requirements.



Colours Available

○ White ● Black

Key Features



Freedom to Move



Modular Installation



Quality Components

- Tool-less rotational portrait-landscape adjustment.
- 180° locking mechanism for lateral arm movement.
- Dynamic gas strut for tool-less height and tilt adjustment.
- Detachable VESA plate allows independent monitor mounting.
- Top-access install clamp-base eliminates under-table installation.
- Suits 10-45mm top thickness.
- VESA-mount laptop tray available.
- Backed by a 5yr warranty.
- Dynamic arm tested to 100,000 cycles for stability at any angle.
- Load rating of 2-8 kg (*Flat Screen Only*)
- Resolved cable management with clips and detachable covers.
- Max Screen Size 17-30"

Product Details

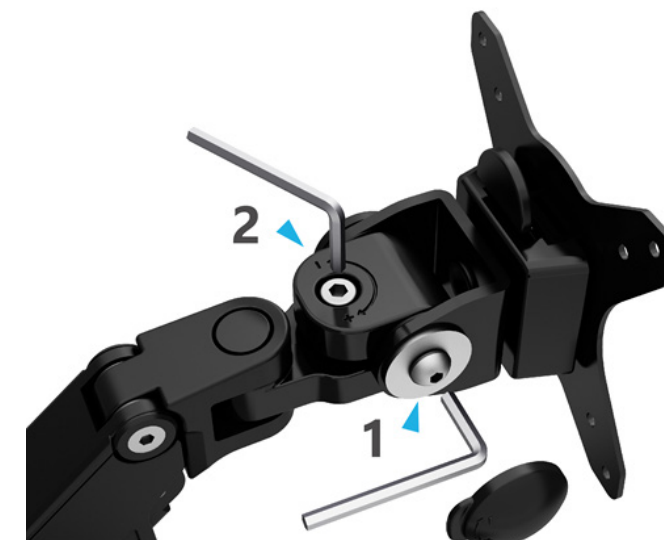
RDM-LC**	Dynamo single dynamic arm with 180 deg lateral lock.
RDMLT**	Dynamo VESA-mount laptop tray
RDM-HDT**	Dynamo heavy duty tilter

» PLEASE CALL US FOR THE MOST UP TO DATE SPECIFICATIONS AND PRICING

Notes:

» - ** Denotes colour; White (WT) or Black (BK)

Dynamo HD Tilter



1. Regular Tilt Adjustment
2. Enhanced Tilt Adjustment

Disclaimer: CMS has made every attempt to ensure the accuracy and reliability of the information provided in this document are correct. All information contained in this document is to be used for general guidance only. CMS reserves the right to change, delete or modify the information without notice.
© CMS Electracom 2023

www.cmselectra.com

Dynamo with 100W USB

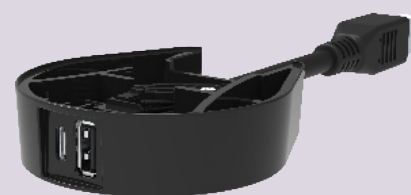
Ergonomics - Integrated USB Charging

We have designed and developed a 100W USB A/C Spacer that can slide in between the desk and Dynamo clamp before the monitor arm is installed. The USB Spacer can then plug into our 100W Inline Module which would normally be mounted underneath the desk and connected into CMS softwiring.

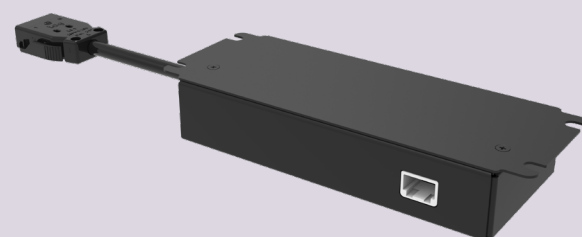


Colours Available

○ White ● Black



USB Spacer



100W inline

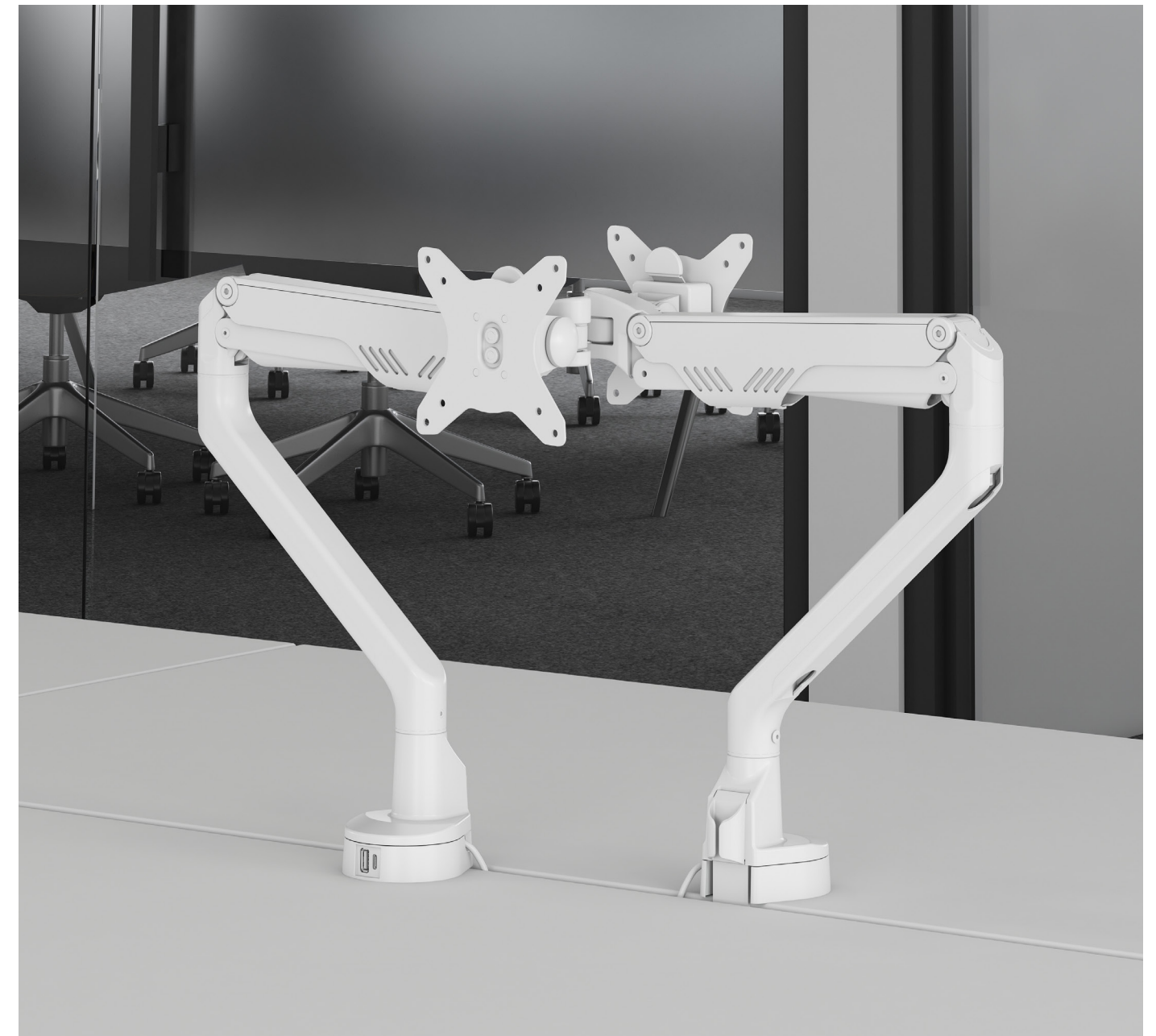
Product Details

RDM-USBSP**

USB A/C Spacer for Dynamo Monitor Arm (Including Black 100W Module)

» Notes:

» - ** Denotes colour; White (WT) or Black (BK)



Disclaimer: CMS has made every attempt to ensure the accuracy and reliability of the information provided in this document are correct. All information contained in this document is to be used for general guidance only. CMS reserves the right to change, delete or modify the information without notice.
© CMS Electracom 2023

www.cmselectra.com