

## One (1) Year Limited Warranty

iTouchless Sensor Automatic Foam Soap Dispenser is distributed by iTouchless Housewares & Products with the highest quality components and most advanced technologies available. The Soap Dispenser is warranted to be free from defects in material and workmanship, given normal use and care, for 365 days from the date of the original purchase with proof of purchase within the United States and Canada. iTouchless will only honor warranty requests from orders placed with our authorized dealers. Items sold as used, floor sample or refinished are sold solely under the terms and conditions of the selling party; iTouchless will not warrant such purchase. iTouchless will repair or replace a working condition dispenser thereof which fails as the result of such a defect during the warranty period.

The warranty is the customers' exclusive remedy for product defect and does not apply to:

- User modification
- Attachments to product by user that causes damage
- Any product, on which the seals and/or serial numbers have been broken, removed, tampered with, defaced or altered in any manner
- Damage caused by abuse, misuse, accident, water or theft

Except as stated above, iTouchless makes no express or implied warranties as to any product, in particular, makes no warranty of merchantability or of fitness for any particular purpose. iTouchless shall not be liable for consequential or incidental damages arising from any product defect. Our Liability is limited to the replacement of any defective product. iTouchless expressly disclaims all warranties not satisfied in this limited warranty. Any implied warranties that may be imposed by law are limited to the terms of this limited warranty. The soap chamber and batteries are not covered by this warranty.

If the dispenser should fail during the warranty period, contact us through <http://www.itouchless.com/contacts/> to submit a request for warranty service. For additional details, please refer to the warranty email that iTouchless will provide. The required warranty fee is subject to location. Fee references are as following: for Contiguous 48 U.S. States \$9.95 and up, for Canada \$19.95 and up, for Alaska and Hawaii \$29.95 and up.

Subject to the above conditions, we will ship a working unit to you after payment has been provided for the warranty service fee. This warranty gives you specific legal rights. However, you may also have other rights that vary from state to state and province.



## User Manual

Sensor Automatic Foam Soap Dispenser  
(Rose Gold / SFD002G)  
(Stainless Steel / SFD002S)  
(White / SFD002W)



## Features:

- Infrared Sensor Technology
- Surgical-Quality, 304-Grade Stainless Steel
- 2 Dispensing Modes
- Easy-Fill Chamber
- Rich Foam Technology
- Battery Powered for Convenient Mobility (batteries included!)

## About your iTouchless® Foam Soap Dispenser

The **iTouchless® Sensor Automatic Foam Soap Dispenser** is the easy way to keep a more hygienic home. Simply place your hand within the infrared sensor's range and the Touch-Free Soap Dispenser will automatically dispense the perfect amount of soap for a single hand wash.

## Register your Product

Visit **[itouchless.com/register](http://itouchless.com/register)** to register your product for simple warranty service and to receive product updates and special offers.

**Product Model # SFD002G / SFD002S / SFD002W**

## We're here to help!

If you have any questions or concerns about this product, please contact iTouchless Customer Support for assistance. You can reach us at **1-844-660-7978** or **[support@itouchless.com](mailto:support@itouchless.com)**.

Your 100% satisfaction is our #1 goal!

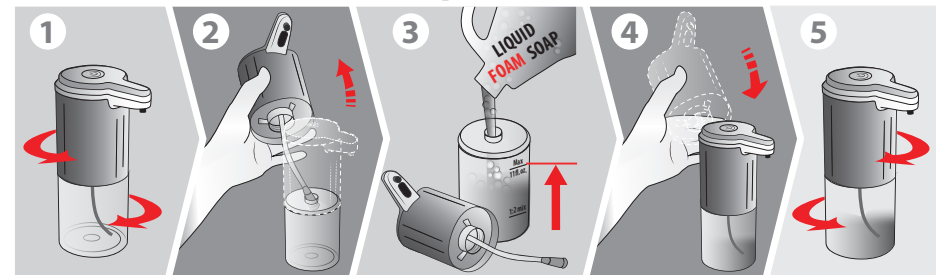
## Contents of the Box

- Sensor Foam Soap Dispenser
- 4 AAA Batteries

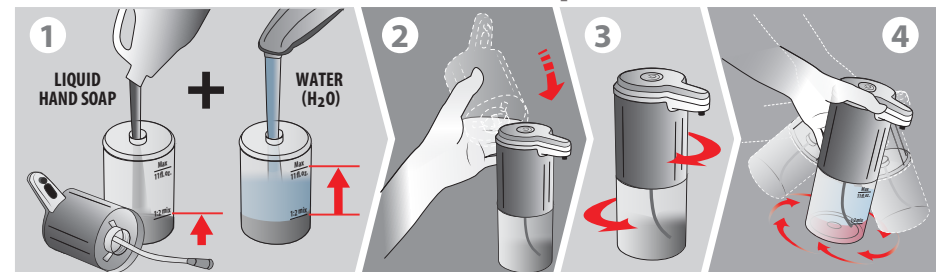
## Attention

1. At first use, cycle dispenser until soap dispenses.
2. Use only Foam Soap liquid.
3. Do not overfill soap chamber. Check the soap level while filling and do not fill past the opening.
4. Wipe off excess liquid and spills before reattaching the soap chamber.
5. Do not submerge the unit or clean with water.
6. To clean, use a damp cloth and dry immediately with a soft dry cloth.
7. Avoid direct sunlight on the infrared sensor.
8. Use only new, same brand alkaline batteries. Change all batteries at the same time.
9. Small parts are not suitable for children or pets.

## How to Fill with Foam Soap \*Use only Liquid Foam Soap

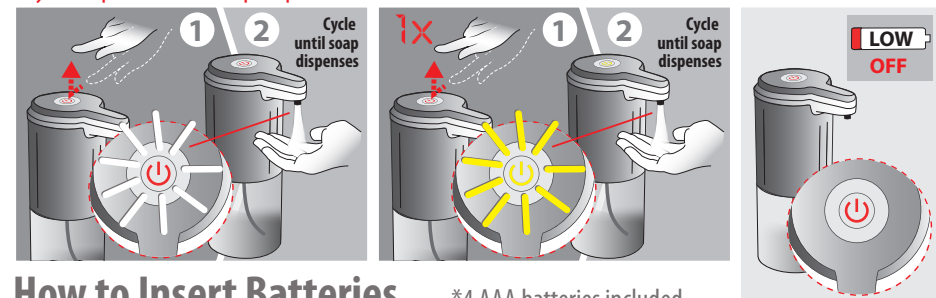


## How to Make Your Own Foam Soap



## How to Power On/Off and Operate

\*Press power button quickly to change dispensing volume and to power off (red light). At first use, cycle dispenser until soap dispenses.



## How to Insert Batteries \*4 AAA batteries included

