

QUICK START GUIDE

Multi-door Access Controller

Applicable Model: TD-8701、TD-8702、TD-8704

Version : 1.0
Date : May 2023

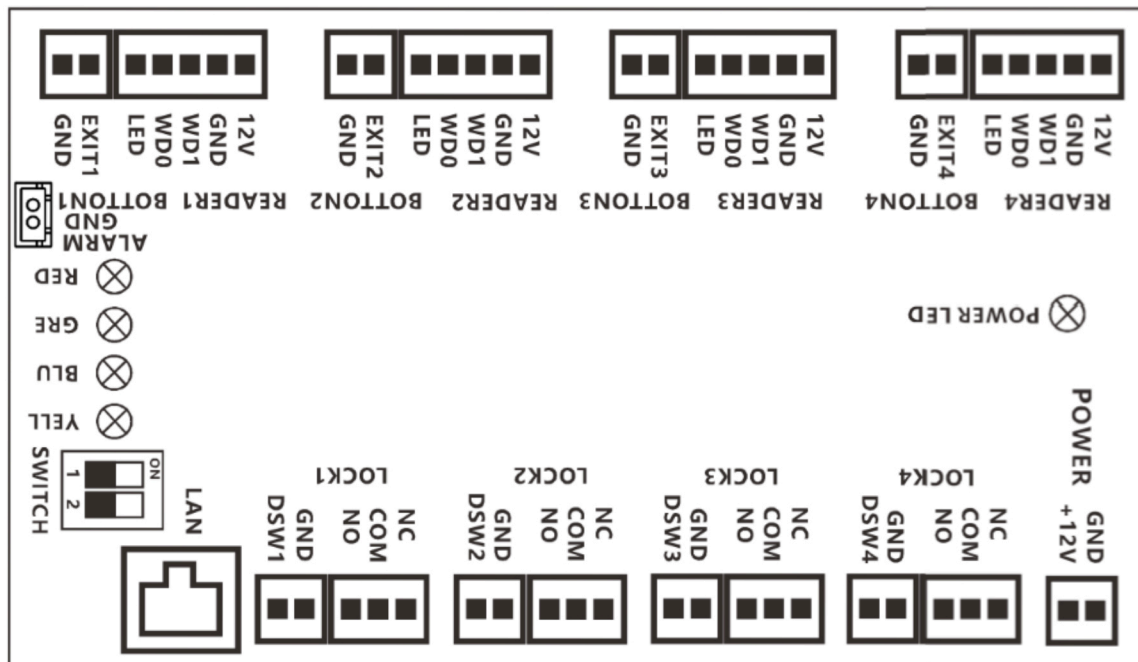
Touching
the future

1、Product Overview

Parameter:

Input	DC12V/500MA
Working mode	networked, offline multi-mode selectable Card
issuing mode	management platform card issuing
Card capacity	40000
Password capacity	20000
Working temperature	-20°C~70°C
Relative humidity	20% ~ 93%
size	162*105*38.5MM

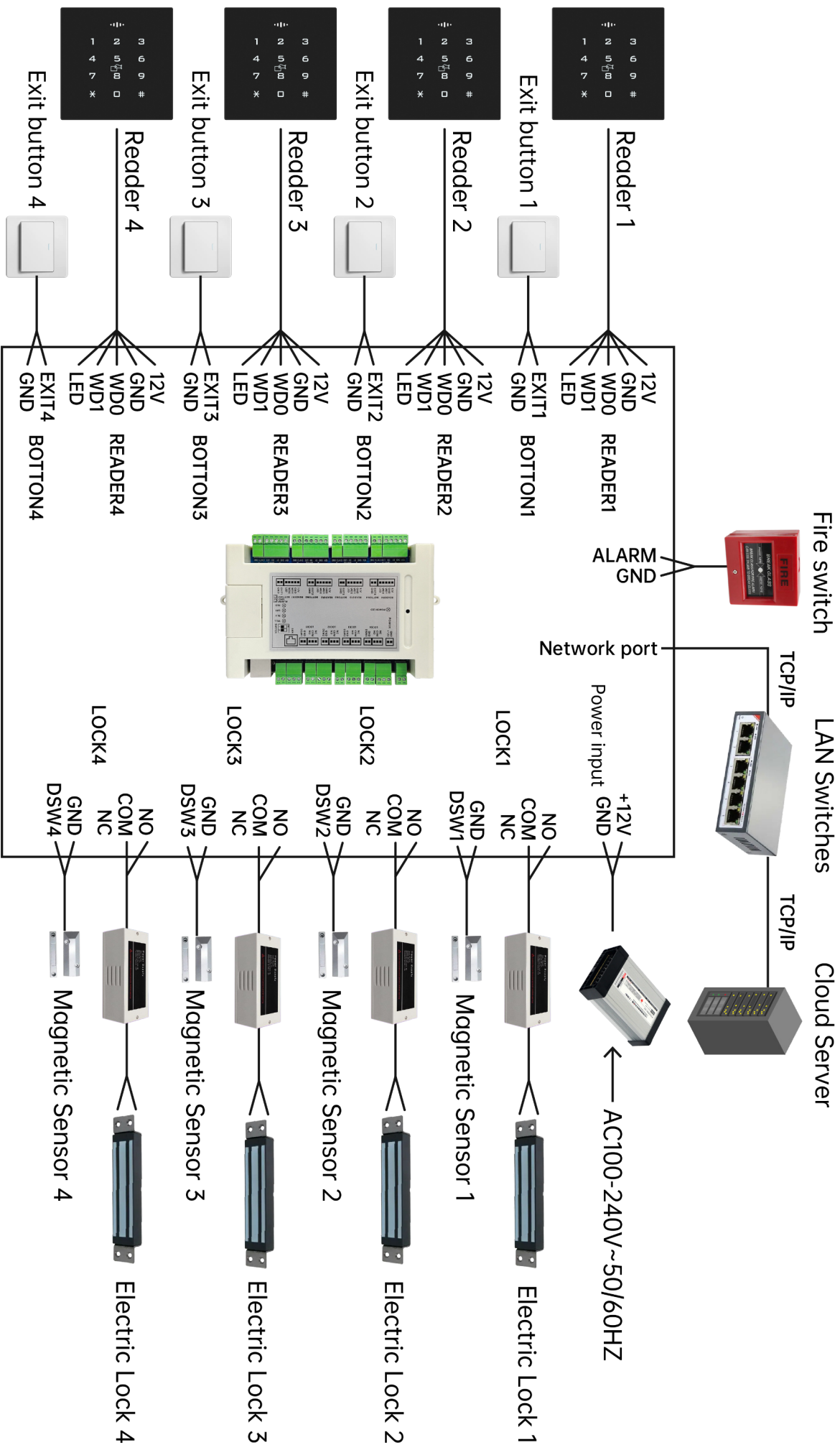
2、Controller interface description



Interface description:

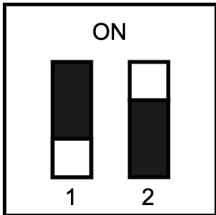
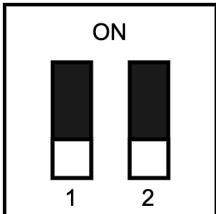
Interface Name	Function Description	Remarks	Interface Name	Function Description	Remarks
+12V	DV12V power input		GND	ground	
12V	Wegen Readhead Power Supply		ALARM	Firefighting linkage signal	
GND	Wegen Reading Headland	Total of 4 groups of signals for 4 readheads	NO	Relays normally open	Total of 4 signals for 4 locks
D1	Wegen Readhead D1		COM	Relay Common	
D0	Wegen Readhead D0		NC	Relay normally closed terminal	
LED	Indicator synchronization signal				
EXITx	Exit button signal	Total of 4 signals for 4 gates	DSWx	Door magnetic detection signal	Total of 4 signals for 4 gates
GND	Go out button ground		GND	Magnetic door detection ground	
SW1 dip switch: (dip code does not dial means 0, dip code dial to ON means 1)					
00: TCP/IP LAN networking 01: Offline					

3、System wiring references:



4、Multi-door Control Function Description

Operating mode selection

Switch Setting	Indicates
<div><p>ON</p><p>1 2</p><p>01</p></div>	Offline working
<div><p>ON</p><p>1 2</p><p>00</p></div>	TCP/IP LAN networking

Startup status

TCP/IP LAN networking : When the power is on, the blue LED flashes, indicating that it is looking for the network. When normally connected to the network, the buzzer "tick ~ tick" two short beeps, the LED red light is always on, indicating that the cloud access control has started normally; when 20 seconds later is not normally connected to the network, the buzzer "tick tick tick" three beeps, the LED red light is always on, indicating Connection network failure, the controller forced to start. After the controller is normally connected to the network, the LED green light will flash once every 20 seconds, indicating that there is data and the cloud platform interactive communication.

Offline working: When the power is started, the buzzer "beep" a short beep, the LED red light is always on, indicating that the cloud access control has started normally.

Unlock status

When the lock is opened legally, the buzzer of the controller and the reading head will be "beep" at the same time, accompanied by a green LED flashing once, and the corresponding relay will be jumped, which means that the lock is opened successfully; when the lock is opened illegally, the buzzer of the controller and the reading head will be "beep beep beep" three times at the same time, accompanied by a red LED flashing three times, which means that the lock is opened and failed.

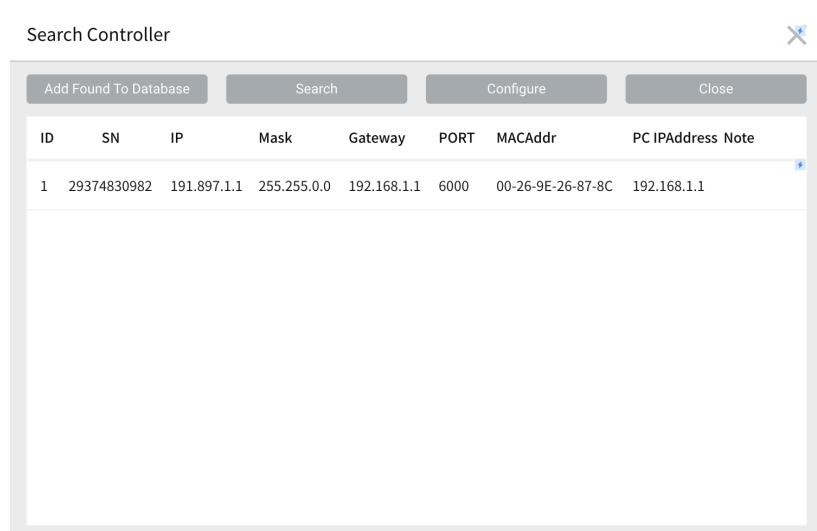
Unlock method

The device can be unlocked through the door button, remote APP, cloud server platform remote, and management center platform remote; after accessing the reading head, it can also be unlocked through various ways such as swipe card and password (optional).

5、Multi-door Control Configuration

Management Center Add Controller

Connect the controller to the PC with a network cable, open the controller management software, and click Add Controller by Search. At this time, the management software can automatically search for the multi-door controllers connected to the LAN and assign them to the corresponding IP. Then configure the controller to the corresponding area. Click to confirm that the controller can be bound to the corresponding regional access control.



Add user and configure his permissions

In the management center, add users to configure the rights of the corresponding area controllers for them. After the configuration is completed, users can open the door in the room where these controllers are installed by swipe card, APP, password, etc. More detailed controller management and

Add User:

User

✕

* User ID: J03

* Name: Lucy

Card NO: 989898

Department:

▼

Photo

☐ Attendance

☒ Access Control

Activate: 2023/01/12 14:55:14 — 2028/12/13 14:55:14

📅

Pwd:

Exit

OK

Add Next

Configuration Permissions:

J01.Lucy—Privileges

✕

Zone (All zones)

▼

Optional Doors 3

m001-01

m001-02

m001-03

»

>

«

<

Selected Doors 1

m001-04

Cancel

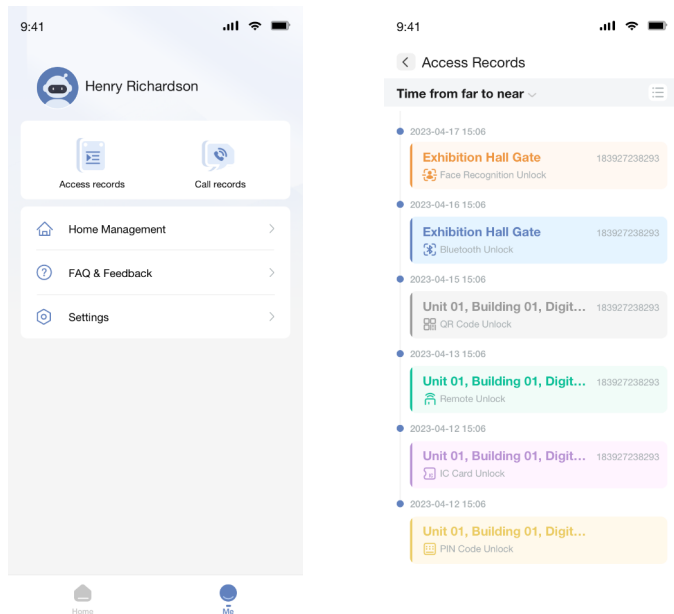
Confirm

6、Remote control controller

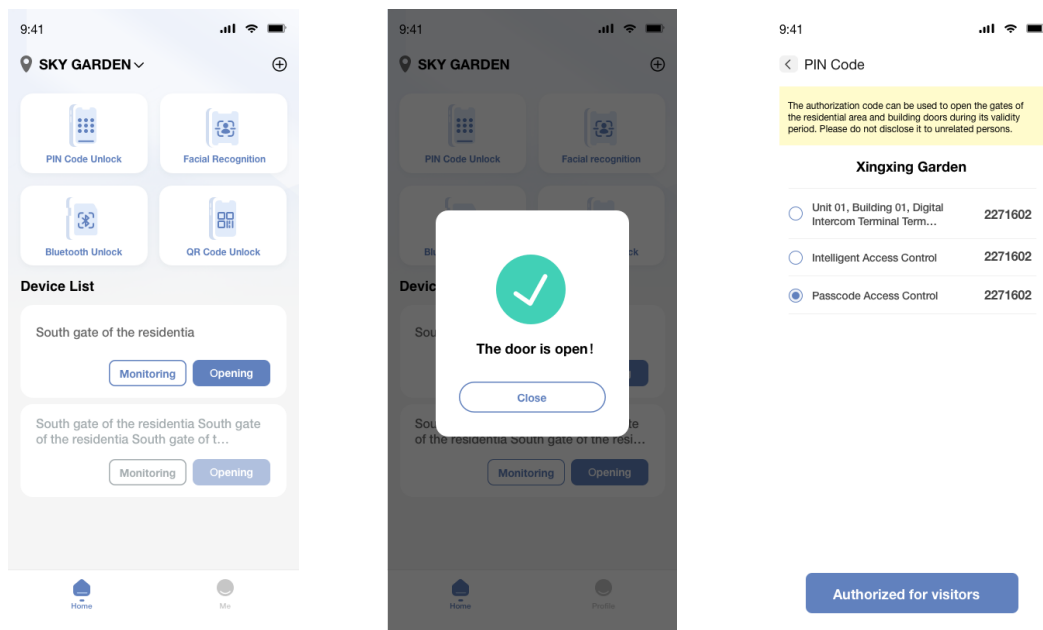
Remotely open doors and view access records

After you open Trudian APP and log in the user you have added in the management center, the APP home page shows all the controllers that the current user can control. You can open the door remotely in APP, and you can also view all the door opening information recorded by the controller in APP.

View access records with APP:



Open the door remotely with APP:





www.trudian.com/en/

HQ Add: Farbell Technology Park, Yixian Road, Nanlang,
Cuiheng New District, Zhongshan City, Guangdong Province,
China. Zip Code: 528451

Phone: +86 0760 - 23689666

E-mail: sales@trudian.com

If the problem is not solved properly, please send the mail to:
support@trudian.com