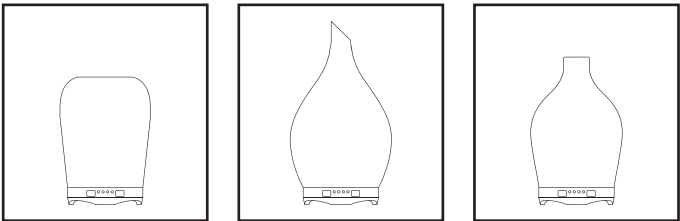
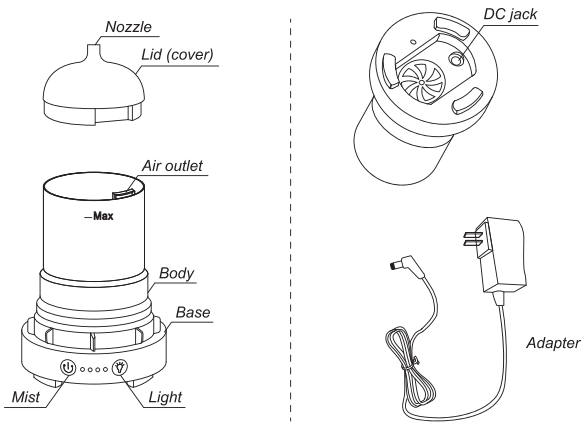


280ml Aroma Diffuser



Facebook icon Porseme US  
Website icon www.porseme.store  
Email icon www.amazon.com/porseme  
Email icon porseme-service@hotmail.com

Product Image



SPECIFICATIONS

Model	QMJS30	Run time	up to 7 hours
Capacity	280ml	Coverage	up to 250 square feet
Adaptor Power		100-240V,24V 0.5A	

PACKAGE INCLUDED

- 1 X Aroma Diffuser
- 1 X Adaptor
- 1 X Manual

Facebook icon Porseme US  
Website icon www.porseme.store  
Email icon www.amazon.com/porseme  
Email icon porseme-service@hotmail.com

TROUBLESHOOTING

SYMPTOM	CAUSE	SOLUTION
No mist or little mist	Using distilled or purified water.	Use tap water(without filter)
	Water is exceeding the max fill line.	Clean the unit and add water 1/2 way to fill line and additional water after getting mist.
	Sensor/disc(inside the bottom of water tank) needs to be cleaned.	Clean as advised with clean water.Dry with cloth or brush or swab.
	Tap water is too cold.	Empty tank and refill with lukewarm tap water.
Leaking	Overfilled with water.	Clean the unit and add water 1/2 way to fill line and additional water after getting mist.
	The lid(cover) is not fully covered on the water tank.	Make sure the lid(cover) is properly in place.
Blinking lights	Water level indicator is dirty.	Carefully clean the sensor/disc inside the bottom of unit.
None of the examples		Get in touch with us and we will happy to help.

CAUTION:FOR INDOOR USE ONLY

Our Porseme diffuser comes with a **12-month** manufacuter warranty.  
Please kindly contact us before you return it to the retailer.

Please contact customer service:

[porseme-service@hotmail.com](mailto:porseme-service@hotmail.com)

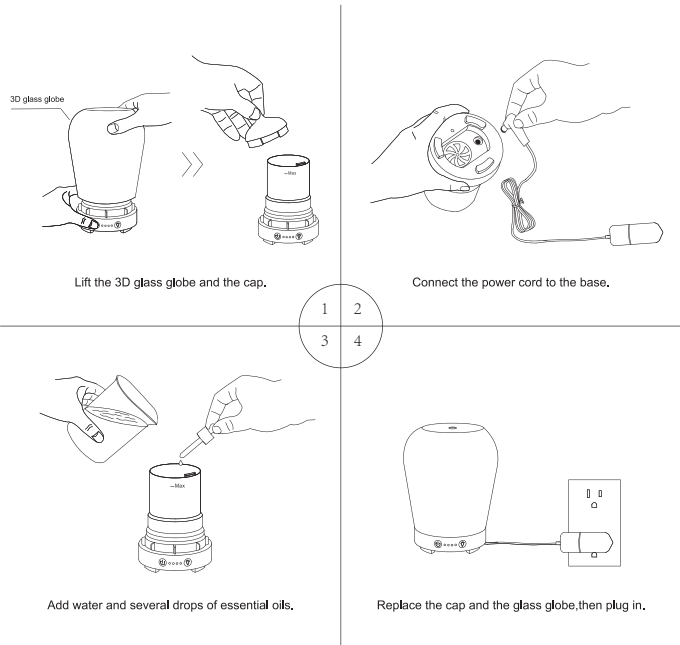
Our Facebook is **PORSEME US**.

Facebook icon Porseme US  
Website icon www.porseme.store  
Email icon www.amazon.com/porseme  
Email icon porseme-service@hotmail.com

Porseme®

Facebook icon Porseme US  
Website icon www.porseme.store  
Email icon www.amazon.com/porseme  
Email icon porseme-service@hotmail.com

HOW TO USE



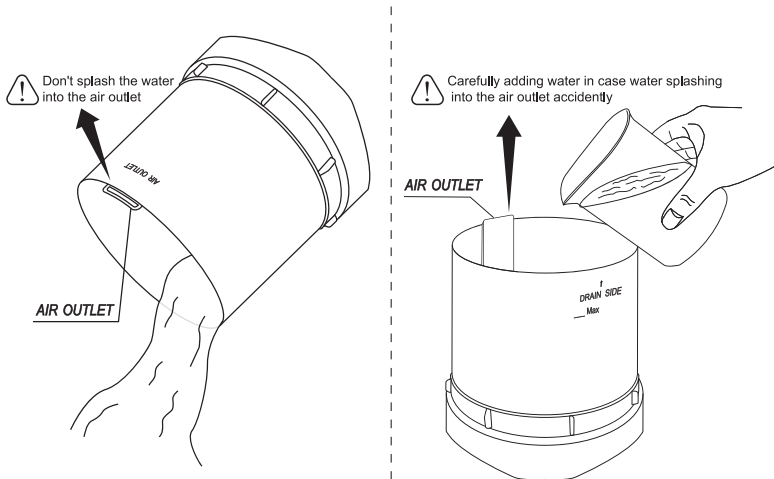
CAUTION: 1.Do not exceed the “MAX” line when adding water.  
2. Better use a container to add water in case water splashing into the motor.

Facebook icon Porseme US  
Website icon www.porseme.store  
Email icon www.amazon.com/porseme  
Email icon porseme-service@hotmail.com

HOW TO CLEAN

- 1. Rinse the water tank with clean water and wipe dry with a clean cloth.Please make sure there is no any water splashing into the air outlet.
- 2. Clean the sensor/disc with a cotton swab.

CAUTION:



Facebook icon Porseme US  
Website icon www.porseme.store  
Email icon www.amazon.com/porseme  
Email icon porseme-service@hotmail.com

MODEL SETTING

LIGHT MODE:

- 1.The 1<sup>st</sup> time press the to turn on the LED light,the color will change automatically.
- 2.The 2<sup>nd</sup> time press the to fix the color.
- 3.The 3<sup>rd</sup> to 9<sup>th</sup> time press the to change the color,our essential oil diffuser has 7 changing color.
- 4.The 10<sup>th</sup> time or long press the for 3 seconds to turn off the light.

MIST AND TIME MODE:

- 1.The 1<sup>st</sup> time press the to turn on the spray.The initial configuration is AUTO.
- 2.The 2<sup>nd</sup> to 4<sup>th</sup> time press the to change the timer to 1H/3H/5H.
- 3.The 5<sup>th</sup> time press the to turn off the spray.

Facebook icon Porseme US  
Website icon www.porseme.store  
Email icon www.amazon.com/porseme  
Email icon porseme-service@hotmail.com

PRODUCT MAINTENANCE

- \* Do not use with a wet hand.
- \* Do not use detergents,solvents or abrasive agents to clean the diffuser unit.
- \* Do not block the mist output or it will damage the product.
- \* Do not remove the cover or add water/oils when in use.
- \* Please use on a flat surface.
- \* Please clean the diffuser regularly,recommend once a week.
- \* Please follow the advised cleaning instructions.
- \* Please keep away from children and pets.
- \* Please contact us if you found any problems,we will happy to help

Facebook icon Porseme US  
Website icon www.porseme.store  
Email icon www.amazon.com/porseme  
Email icon porseme-service@hotmail.com