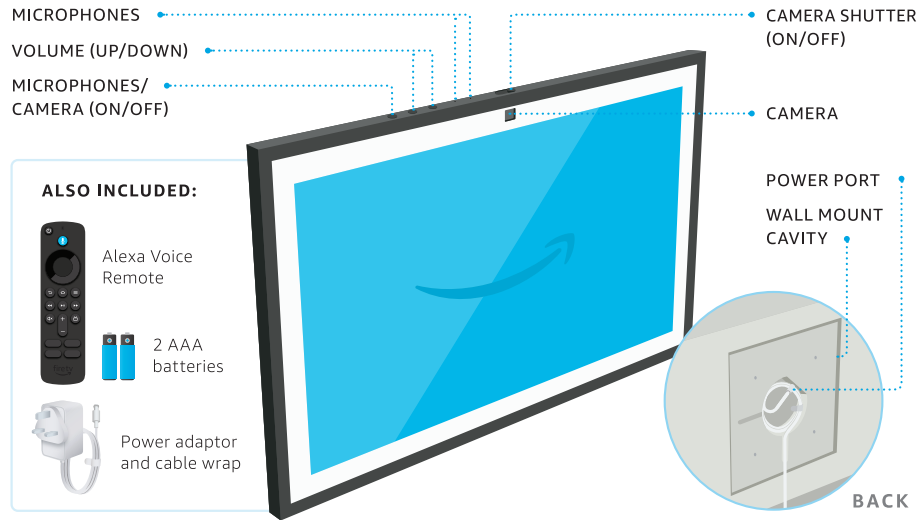
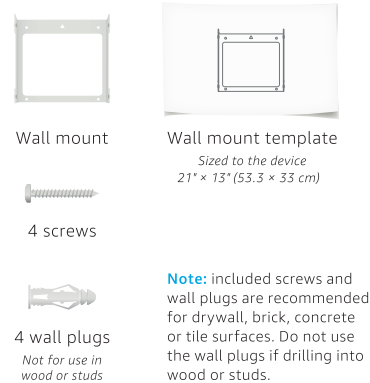


## MEET YOUR ECHO SHOW 21



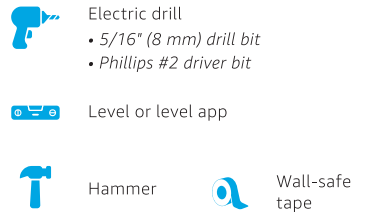
### INCLUDED FOR MOUNTING

Mounting on the wall is optional. You can also place your Echo Show 21 in a stand (sold separately).



### TOOLS YOU'LL NEED

Not included in the box:

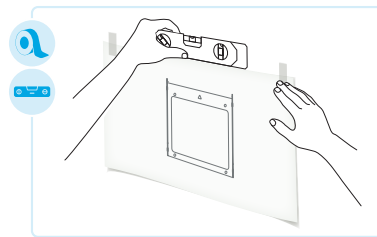


The device can be placed in landscape or portrait orientation.

## MOUNTING YOUR ECHO SHOW 21 ON THE WALL

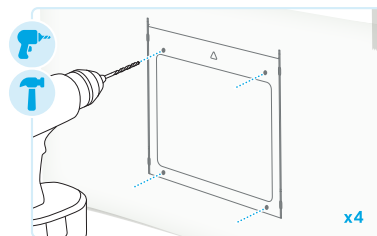
### 1 FIND A LOCATION

- Choose a location near eye level. Consider everyone using the device.
- Ensure the power cable will reach an electrical socket.
- Consider a location that fits both orientations.
- **WARNING:** do not drill into wiring or piping.



### 2 LEVEL AND TAPE TEMPLATE TO THE WALL

- Place the template on the wall in your chosen orientation. Use a level or level app on your phone to level the template.
- Tape the template in place.



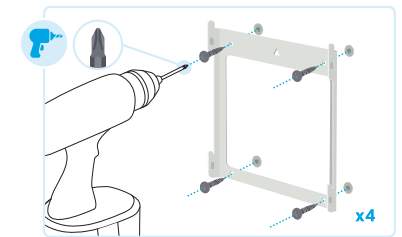
### 3 DRILL HOLES AND INSTALL WALL PLUGS

- Use an electric drill with a 5/16" (or 8 mm) drill bit. Drill through the 4 holes in the template. Remove the template.
- Hammer the 4 wall plugs into the holes until they are flat against the wall.

## MOUNTING YOUR ECHO SHOW 21 ON THE WALL

### 4 INSTALL WALL MOUNT

- With the triangle cutout on top, align the wall mount's 4 holes with the installed wall plugs.
- Drill the screws through the holes and into the wall plugs until the screws are flat against the mount.

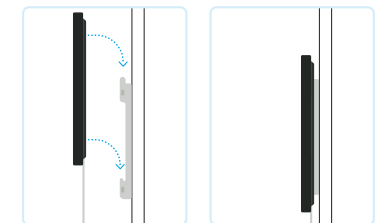


### 5 PLUG INCLUDED POWER ADAPTOR INTO ECHO SHOW 21

- Organise the cable in the mounting cavity with the cable wrap.
- Wait until after mounting your device to plug into an electrical socket.

### 6 SLIDE DEVICE ONTO MOUNT

- Slide your Echo Show 21 down onto the wall mount's hooks. Make sure to connect all 4 hooks.
- The camera should be at the top or side.
- To change orientations, unhook it and mount it in the other orientation.



## SET UP YOUR ECHO SHOW 21



### 1. HAVE YOUR WI-FI AND AMAZON PASSWORDS READY

Prepare to connect to your Wi-Fi and sign in to your Amazon account.



### 2. PLUG ECHO SHOW 21 INTO ELECTRICAL SOCKET

Use the included power adaptor. In about a minute, the display will turn on and Alexa will greet you.



### 3. FOLLOW THE ON-SCREEN SETUP

Log in with an existing Amazon account username and password or create a new account.



### 4. DOWNLOAD THE AMAZON ALEXA APP

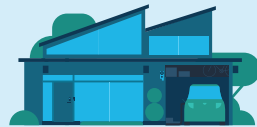
The app helps you get more out of your Echo Show 21. It's where you set up calling and messaging and manage music, lists, settings and news.



### SET UP COMPATIBLE SMART HOME DEVICES

You can easily connect and control compatible devices with the built-in smart home hub.

When ready to get started, open the Alexa app to add your device, or say, "Alexa, discover my devices."



## MEET YOUR ALEXA VOICE REMOTE

### POWER ON/OFF

Takes you to the Echo Show 21 home screen.

### BUTTONS



BACK



MENU



HOME

Takes you between the Echo Show 21 home screen and the Fire TV experience.



REWIND



PLAY/PAUSE



FAST FORWARD



MUTE



GUIDE



VOLUME

### MICROPHONE

ALEXA VOICE BUTTON

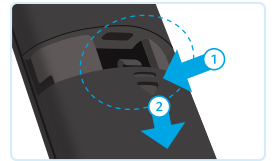
### SELECT

NAVIGATION

APP BUTTONS\*

\*Button function may differ by region.

### POWER UP YOUR REMOTE



1. Press and hold your thumb on the arrow to release the latch.

2. While pressing the arrow, slide open the cover.

3. Insert included AAA alkaline batteries.

**Note:** the remote only pairs with one device at a time and can't control skills and services outside of the Fire TV experience.

## PRIVACY AND SUPPORT



### PRIVACY CONTROLS

Turn the microphones and camera off by pressing the Microphones/Camera on/off button.

Cover the camera easily with the built-in shutter.

See when Alexa is recording and sending your request to Amazon's secure cloud via a blue indicator light.



### MANAGE YOUR VOICE HISTORY

You can view, hear and delete the voice recordings associated with your account in the Alexa app at any time.

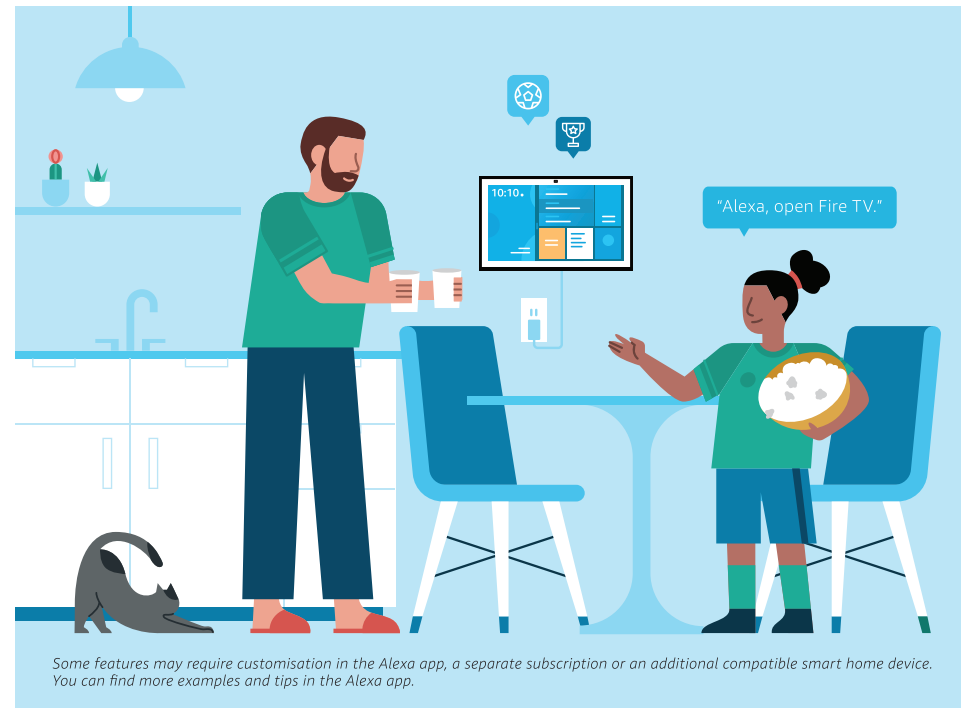


### CUSTOMER SUPPORT

For help and troubleshooting, go to Help & Feedback in the Alexa app or visit [amazon.com/devicesupport](https://amazon.com/devicesupport).

**You have control over your Alexa experience.**

Explore more at [amazon.co.uk/alexaprivacy](https://amazon.co.uk/alexaprivacy).



Some features may require customisation in the Alexa app, a separate subscription or an additional compatible smart home device. You can find more examples and tips in the Alexa app.

**SCAN FOR MORE HELP AND  
ACCESSIBLE INSTRUCTIONS**



Scan the QR code or visit:  
[amazon.com/setup/echoshow21](https://amazon.com/setup/echoshow21)