

**OKI®**



**Printing Solutions for the Office Environment**

# Expect More FROM OKI

**OKI Data Americas** has a passion for printing and for our customers. As a leading manufacturer of printing technologies, OKI Data offers a broad portfolio of solutions designed to meet a wide array of office printing needs. Whether color or monochrome single function or multifunction printers, or a wide range of dot matrix



printers, we deliver high-performing, award-winning, and cost-effective printing solutions for the emerging marketplace.

**Known for innovation and customization**, OKI technology can meet the varied printing requirements of a single business or large corporation across a wide range of industries. Our customers trust their printing needs to OKI Data for color accuracy, consistency and tailor-made solutions. With more than 40 years of experience in the printing industry, OKI Data continues to evolve our products and solutions to address the changing needs of our customers.

Above all, **OKI Data is a true printing solutions partner.** No other manufacturer combines such a high degree of skilled technical support with such a passionate approach to your business.

For these reasons and many more, customers and partners alike can **EXPECT MORE from OKI.**



# Brilliant Color

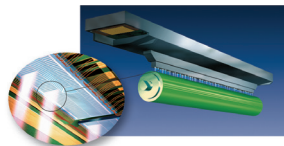
## OKI Color Printing Technologies...



**OKI HD Color** technology delivers impressive color printing – simply and intelligently. Four core elements combine to deliver this breathtaking output:

### High-definition LED Printheads –

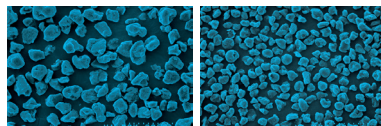
Digital LED printing has clear advantages over laser, delivering superior images and stronger colors – fast! And, unlike laser, there are no moving parts within the LED mechanism, which means greater reliability.



LED printheads accurately control the intensity of the light source, delivering up to 256 levels of color intensity

### Microfine Toner –

This high-definition toner configuration ensures that documents are printed with superior print quality: graphics and text are sharper, crisper and glossier, even on ordinary office paper.

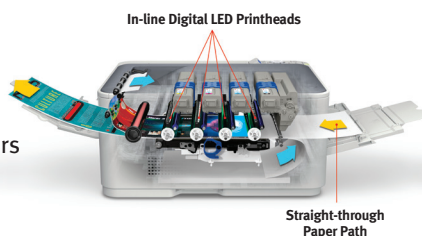


Conventional Crushed Toner

Microfine Toner from OKI

### Single-pass Flat Paper Path –

The OKI straight-through paper path can handle card stock up to 360 gsm or banners up to 52" (1.3m) in length – providing media flexibility as well as machine reliability.

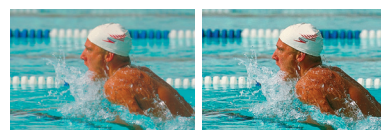


In-line Digital LED Printheads

Straight-through Paper Path

### Printer Control System –

An advanced printer control system constantly checks alignment, registration and color balance, to make printing as simple as it should be and ensure the quality of output.



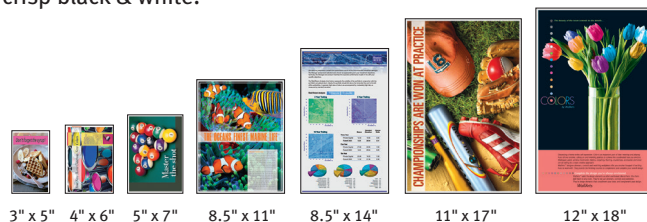
Without Photo Enhance

With Photo Enhance

## Enabling you to do more – on a wide range of media

OKI single-function and multifunction devices let you print or copy documents in a range of sizes and formats: everything from 3" x 5" cards to letter- and legal-size sheets to banners up to 52" in length can all be produced in-house.

Moreover, the excellent reproduction quality of our products is delivered even on ordinary office paper—no special media is required unless specified—helping to control costs while maintaining your image in breathtaking CMYK color, as well as in crisp black & white.



3" x 5"

4" x 6"

5" x 7"

8.5" x 11"

8.5" x 14"

11" x 17"

12" x 18"



8.5" x 35.4"

12.9" x 35.4"

12.9" x 47.24"

8.5" x 48"

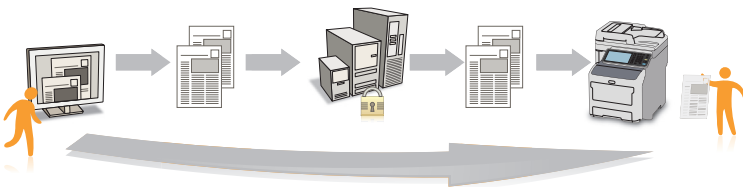
11.6" x 52"

# Expect More SOLUTIONS

OKI understands the many challenges confronting the business world today. That's why we offer a variety of world-class solutions designed to increase business productivity, while reducing your costs. All of our custom solutions offer an effective mix of quality, performance, reliability and value to help you optimize your processes by combining our cutting-edge technology, customized service and unrivaled support. For details, visit [okidata.com/business-solutions](http://okidata.com/business-solutions).

## Print & Copy Solutions

- **PaperCut™ MF** is easy-to-use, cost-effective print accounting and management software designed to help organizations save money by preventing excess and unauthorized printing, copying, scanning and faxing. Its unique design allows it to scale easily, making it suitable for sites of all sizes—regardless of network environment, platform, or type of print device.\*



## Fleet Management Solutions

- **PrintSuperVision** lets you remotely monitor OKI and non-OKI devices from any web browser on your network. It monitors a device's health, sends email alerts, reports supply status, tracks printed pages, and even lets you order and track supplies online—all with just a few clicks from within the application itself.



## Industry-specific Solutions

- **Remark® Test Grading Solution (Education)** enables instructors to print bubble sheet tests on demand, grade tests instantaneously, print reports in minutes, even scan documents to specific classroom folders.\*
- **GHS Labeling (Manufacturing/Distribution)** lets you create GHS-formatted labels on demand, make changes on the fly, and avoid costly inventories of pre-printed labels by using OKI digital color printers (including the C610 and C711 for letter- or legal-size labels, or the C831 for labels up to tabloid-size) along with your GHS label applications and approved GHS media.
- **SignDirector™ (Retail)** allows easy management of retail signs at corporate, quick distribution of signs to the right stores, and “no-fuss” on-demand printing at the store level—transforming your current signage process into a model of efficiency.

## Mobile Print Solutions

- **AirPrint™** is an Apple technology that helps you print output without the need to download or install drivers. With AirPrint built-in to your local network, print from your favorite iOS or OS X app by selecting various OKI printers and MFP models.
- **Google® Cloud Print®** is a technology that connects your printers to the web. It works on your phone, tablet, Chromebook, PC, and any other web-connected device you want to print from.
- **OKI Android® App** allows users to bypass the cloud and print directly from their Android mobile devices on networks featuring OKI's LED printers or MFPs.

Also: see **PaperCut MF** for additional mobile print solutions.





## Scan & Capture Solutions

- **DRIVE | Image** is a suite of software modules and services that gives instant access to all documents, and optimizes the document lifecycle—from image capture and processing to print and output management.\*



- **ABBYY® FineReader 12 Sprint** is a powerful yet simple document capture system that allows you to quickly establish a cost-efficient process of converting paper to searchable and re-usable electronic documents.
- **SENDYS® Explorer LITE** streamlines business processes and saves time. This solution will help companies of any size fulfill their document workflow needs, maximizing efficiencies from capture to distribution. It enables the user to convert documents and distribute or upload them to a chosen location, providing greater flexibility to edit, access, print, retrieve and share files. SENDYS Explorer LITE is available for download at no charge, and optional cloud connectors and premium versions are available for purchase.\*
- **Cloud Connectors** scan directly to any cloud document solution. Easily upload scanned documents from your MFP directly to Dropbox, OneDrive, Google Drive and Microsoft® SharePoint®.\*

## Document Management Solutions

- **Square 9 SmartSearch** offers you the opportunity to incorporate enterprise document management software into your business practices: the Square 9 GlobalCapture xSP connector provides a real-time capture solution that improves collaboration and shares document information directly from the touch panel of your Smart Extendable Platform-enabled OKI MFP. SmartSearch reduces your total cost of ownership because it's easy to install, learn, use and support.\*
- **DocuWare®** is a seamless integration of OKI MFP devices with DocuWare's document management solutions. Paper documents are easily digitized and quickly stored to your defined DocuWare file cabinets, enabling your company to organize and efficiently manage the flow of information—both internally and externally—from any MFP anywhere in your organization.\*

Also: see **DRIVE | Image** for additional document management solutions.

**\* Indicated solutions are supported by OKI Smart Extendable Platform** – the solution that can optimize and simplify document processing and workflow.

With OKI's flexible MFP architecture, your company, software developers or OKI Solution Partners can create customized solutions to meet your specific business needs. The web interface of select OKI MFPs lets users interact directly with web-based applications via the touch-screen display of the MFP's op panel.

As new applications become valuable and available to your business, they can be added to your MFP's feature set using embedded OKI Smart Extendable Platform technology.



# Smart Managed Print Services

**Smart Managed Print Services** from OKI is a scalable, end-to-end Managed Print solution that's designed to significantly reduce the costs of document output and management, as well as increase your company's workflow efficiencies.

With its modular platform, Smart Managed Print Services can be leveraged to support any size business—from a small office to an enterprise environment. It streamlines business processes, removing the burden of printer ownership through continuous optimization.

The six-stage process includes Print Assessment and Recommendation, Initial Fleet Optimization, Remote Monitoring and Management, Automated Supplies and Service Fulfillment, Consolidated Billing and Collections, and Ongoing Fleet Monitoring for continuous improvement.

## Smart Managed Print Services will enable you to:

- Reduce your printing costs upfront and long term
- Streamline your print operation
- Realize a predictable monthly cost with access to print activity
- Update an aging fleet without the capital expenditure associated with equipment purchases
- Free up internal resources to focus on critical business needs
- Improve printer service levels and minimize device downtime
- Reduce energy consumption through device consolidation

Establishing a managed print business model is a smart print strategy for any company.

Smart Managed Print Services goes beyond asset management and hardware replacement to deliver a long-term business strategy for controlling your print environment.

### Ongoing Fleet Optimization

Continuous fleet monitoring will uncover additional cost-savings opportunities. Optimized services include device and usage tracking and strategic recommendations to ensure ongoing improvements to your print fleet as your business changes over time.

### Consolidated Invoice

Manage your print budget with one consolidated invoice based on per-page costs to remove unexpected expenses.

### Automatic Supplies and Service

Based on remote monitoring, supplies and services are automatically dispatched to your location as needed. As a result, productivity and employee satisfaction increases while downtime decreases.

### Print Assessment & Recommendation

Your entire print fleet operation will be analyzed using industry best practices, and a brand-agnostic recommendation will be provided to maximize productivity and decrease costs.

### Initial Fleet Optimization

Hardware, services and supplies will be installed or redeployed to consolidate devices, maximize productivity and lower operating costs.

### Remote Monitoring and Management

Devices will be automatically monitored for consumable usage, service issues and life-cycle asset management—freeing up internal IT resources to focus on more critical business needs.



# Value-Added Service & Warranty Program

5

**COREFIDO – the FREE industry leading 5-Year Warranty, includes:**

- 60 months of **FREE** on-site repairs
- **FREE** parts and labor
- National service support

By eliminating service and maintenance costs over five years, COREFIDO can dramatically reduce the total cost of ownership (TCO) of your OKI devices and improve your bottom line.

To qualify for the 5-Year COREFIDO Warranty program, you must register your eligible OKI device at [okidata.com/COREFIDO](http://okidata.com/COREFIDO) within 90 days of purchase.

COREFIDO-eligible single-function and multifunction devices are:

- C831n/C831dn Digital Color Printers
- MC873dn/MC873dnc/MC873dnx Color MFPs
- MC780+/MC780f+/MC780fx+ Color MFPs
- MC770+/MC770+ Wireless Color MFPs
- MB770+/MB770f+/MB770fx+ Mono MFPs
- MB760+/MB760+ Wireless Mono MFPs

They are identified in this Guide by the COREFIDO mark:



For more information, visit [www.okidata.com/COREFIDO](http://www.okidata.com/COREFIDO)

# Environmental Initiatives

OKI takes a holistic approach to green issues when new products are developed: the environmental considerations are automatically integrated into the design, engineering and post-sales care of the product and its consumables.

Among the eco-friendly features that can be found in many OKI products:

Feature	Benefit to the Environment
LED Technology	Long printhead life with high energy efficiency
ENERGY STAR® Compliance	Superior energy efficiency
Duplex (2-sided) Printing	Savings in energy and resources
Automatic ECO Mode	Lowers power consumption; saves energy
Deep-Sleep Mode	Lowest power consumption (≥1W) <sup>1</sup>
Toner Save Mode	Reduced consumables use and waste
Auto Power Off	Saves power during periods of non-use
Individual Color Toner Cartridges	Extends image drum life
1-Piece Image Drum <sup>2</sup>	Reduced use of disposable material
Accountability Software	Reduction in unnecessary printing

## COREFIDO: the easy – and free – way for you to “go green”!

COREFIDO also includes an eco-correct Recycling Program for used Genuine OKI® toner and image drums, plus maintenance items such as transfer belts and fusers.

For details on the COREFIDO Recycling Program, please visit [www.okidata.com/COREFIDO](http://www.okidata.com/COREFIDO)

<sup>1</sup> Applies to digital single-function printers only.  
<sup>2</sup> Offered on select models.





	Desktop	Small Workgroup	
	C331dn	C531dn	C610n/C610dn/C610cdn/C610dtn
<b>Performance</b>			
Print Speed	Letter/A4: Up to 23 ppm Color, 25 ppm Mono <sup>1</sup>	Letter/A4: Up to 27 ppm Color, 31 ppm Mono <sup>1</sup>	Letter/A4: Up to 32 ppm Color, 34 ppm Mono <sup>1</sup>
1st Page Out	As fast as 9 seconds Color, 8.5 seconds Mono <sup>1</sup>	As fast as 8 seconds Color, 7.5 seconds Mono <sup>1</sup>	As fast as 9 seconds Color, 8 seconds Mono <sup>1</sup>
Resolution	Up to 1200 x 600 dpi	Up to 1200 x 600 dpi	Up to 1200 x 600 dpi
Processor	532 MHz PowerPC CPU	532 MHz PowerPC CPU	533 MHz PowerPC CPU
Memory (Standard/Max)	128 MB/640 MB	256 MB/768 MB	256 MB/768 MB
Memory Storage	N/A	16 GB SD Memory Card optional <sup>7</sup>	16 GB SD Memory Card standard on C610cdn <sup>7</sup>
Monthly Duty Cycle	Up to 45,000 pages	Up to 60,000 pages	Up to 75,000 pages
<b>Compatibility</b>			
Emulations	PCL® 5c, PCL 6; PostScript® 3™; IBM® ProPrinter®; Epson® FX	PCL 5c, PCL 6; PostScript 3; IBM ProPrinter; Epson FX	PCL 6, PCL 5c; PostScript 3; IBM PowerPrinter; Epson FX; Windows® Vista® XPS; PDF v1.7
Interfaces	USB 2.0 High-Speed; 10/100 Base-TX Ethernet Print Server	USB 2.0 High-Speed; 10/100 Base-TX Ethernet Print Server	USB 2.0 High-Speed; 10/100 Base-TX Ethernet Print Server
<b>Paper Handling</b>			
Paper Input (Standard)	350 sheets (250-sheet main tray and 100-sheet multi-purpose feeder)	350 sheets (250-sheet main tray and 100-sheet multi-purpose feeder)	C610n/dn/cdn – 400 sheets (300-sheet Letter/Legal/Universal main tray and 100-sheet multi-purpose tray); C610dtn – 930 sheets (main tray, multi-purpose feeder and 530-sheet 2nd tray)
Paper Input (Max)	880 sheets with optional 530-sheet 2nd paper tray	880 sheets with optional 530-sheet 2nd paper tray	1,460 sheets with standard/optional 530-sheet 2nd/3rd trays <sup>8</sup>
Duplex (2-sided) Printing	Standard	Standard	Standard on C610dn, C610dtn, C610cdn; optional on C610n
Media Sizes	3" x 5" to 8.5" x 52" banner <sup>2</sup>	3" x 5" to 8.5" x 52" banner <sup>2</sup>	3" x 5" to 8.5" x 52" banner
<b>Environmental</b>			
Printer Size (WxDxH)	16.1" x 19.8" x 9.5" (410mm x 504mm x 242mm)	16.1" x 19.8" x 9.5" (410mm x 504mm x 242mm)	17.1" x 21.5" x 13.4" (435mm x 547mm x 340mm)
Printer Weight (Approx.)	48.5 lb. (22.0 kg)	48.5 lb. (22.0 kg)	57.3 lb. (26.0 kg)
<b>Consumables</b>			
Standard Toner	3,000 pages CMY; 3,500 pages Black <sup>3,4</sup>	3,000 pages CMY; 3,500 pages Black <sup>3,4</sup>	6,000 pages CMY; 8,000 pages Black <sup>3,4</sup>
High-Capacity Toner	N/A	5,000 pages CMYK <sup>3,4</sup>	N/A
Image Drum	20,000 pages <sup>5</sup>	20,000 page <sup>5</sup>	20,000 pages <sup>5</sup>
<b>Warranty &amp; Support</b>			
Warranty	Printer: 3-Year limited Carry-in Depot <sup>6</sup> Digital LED Printheads: 5-Year limited	Printer: 3-Year limited Carry-in Depot <sup>6</sup> Digital LED Printheads: 5-Year limited	Printer: 1-Year limited On-Site <sup>6</sup> Digital LED Printheads: 5-Year limited
Support	Live, toll-free 24/7/365 <sup>4</sup>	Live, toll-free 24/7/365 <sup>4</sup>	Live, toll-free 24/7/365 <sup>4</sup>



**COREFIDO**  
5 YEAR WARRANTY



## Mid Workgroup

### C711n/C711dn/C711dtn

**Letter/A4:** Up to 34 ppm Color, 36 ppm Mono<sup>1</sup>

As fast as 9 seconds Color, 8 seconds Mono<sup>1</sup>

Up to 1200 x 600 dpi

533 MHz

256 MB/768 MB

16 GB SD Memory Card option<sup>7</sup>

Up to 100,000 pages

PCL 6, PCL 5c; PostScript 3; IBM PowerPrinter; Epson FX;  
Windows Vista XPS; PDF Direct Print v1.7

USB 2.0 High-Speed; 10/100 Base-TX Ethernet Print Server;  
Parallel

C711n/C711dn – 630 sheets (530-sheet Letter/Legal/Universal  
tray and 100-sheet multi-purpose feeder); C711dtn – 1,160  
sheets standard

1,690 sheets with standard/optional 530-sheet 2nd/3rd trays<sup>8</sup>

Standard on C711dn/C711dtn; optional on C711n

3" x 5" to 8.5" x 52" banner

17.1" x 21.5" x 15.3"  
(435mm x 547mm x 389mm)

60.8 lb. (27.6 kg)

11,500 pages CMY; 11,000 pages Black<sup>3,4</sup>

N/A

20,000 pages<sup>5</sup>

Printer: 1-Year limited On-Site<sup>6</sup>  
Digital LED Printheads: 5-Year limited

Live, toll-free 24/7/365<sup>6</sup>

## Small Workgroup A3

### C831n/C831dn

**Letter/A4:** Up to 35 ppm Color and Mono<sup>1</sup>  
**Tabloid/A3:** Up to 20 ppm Color and Mono<sup>1</sup>

As fast as 9.5 seconds<sup>1</sup>

Up to 1200 x 600 dpi

800 MHz PowerPC

256 MB/768 MB

16 GB SD Memory Card option<sup>7</sup>

Up to 75,000 pages

PCL 6, PCL 5c; PostScript 3; IBM ProPrinter and Epson FX;  
PDF Direct Print v1.8

USB 2.0 High-Speed; 10/100 Base-TX Ethernet Print Server

400 sheets (300-sheet Letter/Legal/Tabloid/Universal  
tray and 100-sheet multi-purpose feeder)

1,460 sheets with optional 2nd and 3rd 530-sheet paper trays

Standard on C831dn; optional on C831n

3" x 5" to 11.6" x 52" banner

17.6" x 21.7" x 14.2"  
(449mm x 552mm x 360mm)

C831: 81.6 lb. (37.0 kg); C831dn: 88.2 lb. (40 kg)<sup>9</sup>

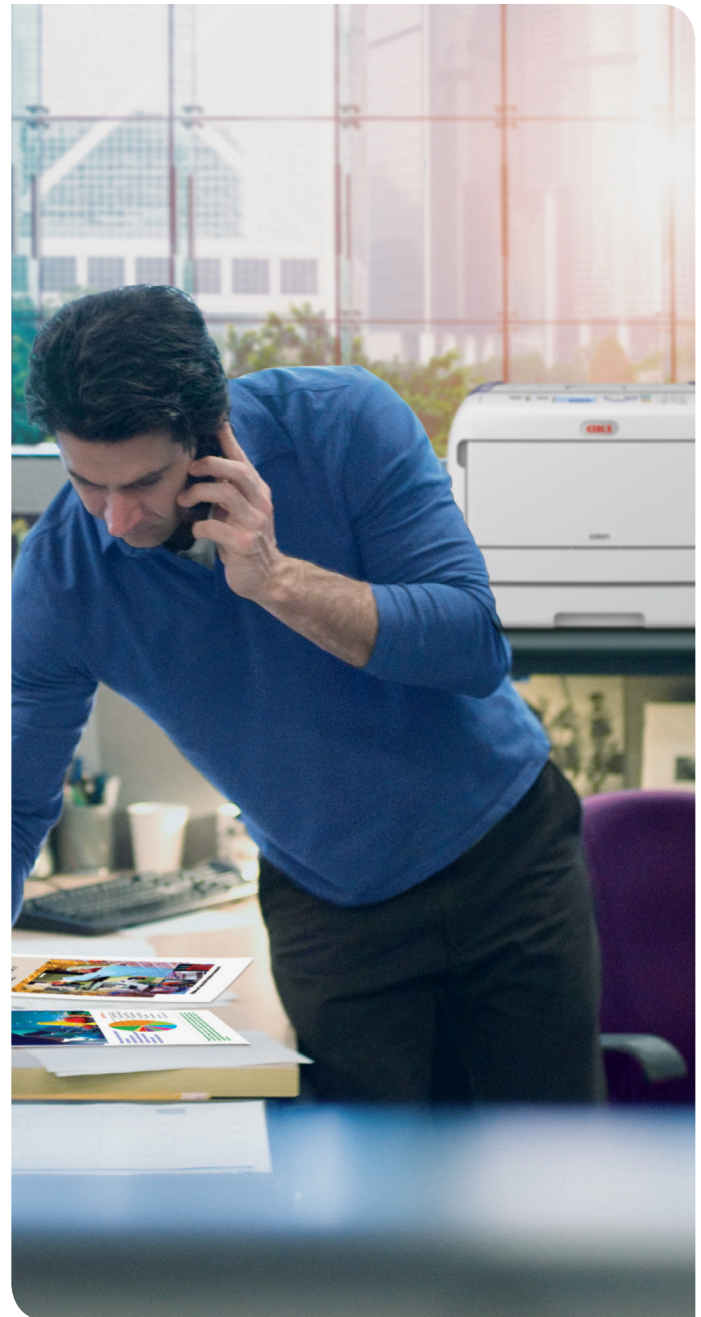
10,000 pages CMYK<sup>4</sup>

N/A

30,000 pages<sup>5</sup>

Printer: 1-Year limited On-Site<sup>6</sup>  
Digital LED Printheads: 5-Year limited

Live, toll-free 24/7/365<sup>6</sup>





	Desktop	Small Workgroup	Mid Workgroup
	MC362w	MC562w	MC770+/MC770+ Wireless
<b>Printer</b>			
Print Speed	Up to 23 ppm Color, 25 ppm Mono <sup>1</sup>	Up to 27 ppm Color, 31 ppm Mono <sup>1</sup>	Up to 35 ppm Color, 37 ppm Mono <sup>1</sup>
1st Page Out	As fast as 9 seconds Color, 8.5 seconds Mono <sup>1</sup>	As fast as 8 seconds Color, 7.5 seconds Mono <sup>1</sup>	As fast as 9 seconds Color, 8 seconds Mono <sup>1</sup>
Resolution	Up to 1200 x 600 dpi	Up to 1200 x 600 dpi	Up to 1200 x 600 dpi
Interfaces	High-Speed USB v2.0; 10/100 Base-TX Ethernet (network); Wireless; Apple® AirPrint™, Google Cloud Print™	High-Speed USB v2.0; 10/100 Base-TX Ethernet (network); Wireless; Apple AirPrint, Google Cloud Print	High-speed USB v2.0; USB Host (x2); 1 Gigabit Ethernet (10/100/1000 Base-TX); IEEE802.11 a/b/g/n Wireless (MC770+ Wireless only); Apple AirPrint
Memory Storage	SD Flash Cards: 4 GB standard	SD Flash Cards: 4 GB standard, 16 GB optional	160 GB secured HDD, standard
Duplex (2-sided) Printing	Standard	Standard	Standard
Monthly Duty Cycle	Up to 45,000 prints/copies	Up to 60,000 prints/copies	Up to 120,000 prints/copies
<b>Copier</b>			
Copy Speed	Up to 23 cpm Color, 25 cpm Mono <sup>1</sup>	Up to 27 cpm Color, 31 cpm Mono <sup>1</sup>	Up to 35 cpm Color, 37 cpm Mono <sup>1</sup>
1st Copy Out	As fast as 14 seconds Color, 12 seconds Mono <sup>1</sup>	As fast as 14 seconds Color, 12 seconds Mono <sup>1</sup>	As fast as 13 seconds Color and Mono <sup>1</sup>
Resolution	Up to 600 x 600 dpi	Up to 600 x 600 dpi	Up to 600 x 600 dpi
ADF Capacity	Up to 50 letter/legal sheets	Up to 50 letter/legal sheets	Up to 100 letter-size sheets (Reversing ADF)
Max Number of Copies	99 copies	99 copies	Up to 999 copies
<b>Scanner</b>			
Scanner Platen Size	8.5" x 14"	8.5" x 14"	8.5" x 14"
Scan Resolution	Up to 1200 x 1200 dpi	Up to 1200 x 1200 dpi	Up to 600 dpi
Scan-to Functionality	Scan to E-mail with LDAP support; to USB memory stick; to FTP sites; to network; and to PC	Scan to E-mail with LDAP support; to USB memory stick; to FTP sites; to network; and to PC	Scan to Filing box; Shared folder; E-mail; USB memory stick; WSD scan
File Formats Supported	PDF, TIFF, JPEG, BMP, PCX, GIF, TGA, PNG, WMF, EMF	PDF, TIFF, JPEG, BMP, PCX, GIF, TGA, PNG, WMF, EMF	PDF, PDF/A-1b, Slim PDF, Secure PDF, TIFF, JPEG, XPS
<b>Fax</b>			
Modem Speed	33.6 Kbps Super G3	33.6 Kbps Super G3	33.6 Kbps Super G3
Transmission Speed	3 seconds/page <sup>2</sup>	3 seconds/page <sup>2</sup>	3 seconds/page <sup>2</sup>
Fax Memory	4 MB (200 pages <sup>2</sup> )	4 MB (200 pages <sup>2</sup> )	1 GB (shared)
<b>Paper Handling</b>			
Standard Paper Input	250 sheets + 100 sheet multi-purpose tray	250 sheets + 100 sheet multi-purpose tray	530 sheets + 100 sheet multi-purpose tray
Maximum Paper Input	880 sheets	880 sheets	3,160 sheets
Finishing Capabilities	N/A	N/A	N/A
<b>Environmental</b>			
Operator Panel	5-line, 3.5" tilting backlit LCD display; Alphanumeric keypad; 1-touch fax dials	5-line, 3.5" tilting backlit LCD display; Alphanumeric keypad; 1-touch fax dials; Full QWERTY keyboard	9" color graphic touchscreen; Alphanumeric keypad; Function buttons
MFP Size (WxDxH, Basic Model)	16.8" x 20.0" x 17.5" (427mm x 509mm x 444mm)	16.8" x 20.0" x 17.5" (427mm x 509mm x 444mm)	20.6" x 23.8" x 26.6" (522mm x 604mm x 675mm)
MFP Weight (Approx.)	63.0 lb. (29.0 kg)	63.0 lb. (29.0 kg)	105.8 lb. (48 kg)
<b>Warranty/Support</b>			
Warranty	MFP: 3-Year limited Carry-in Depot <sup>3</sup> Digital LED Printheads: 5-Year limited	MFP: 3-Year limited Carry-in Depot <sup>3</sup> Digital LED Printheads: 5-Year limited	MFP: 1-Year limited On-Site <sup>3</sup> Digital LED Printheads: 5-Year limited
Support	Live, toll-free 24/7/365 <sup>3</sup>	Live, toll-free 24/7/365 <sup>3</sup>	Live, toll-free 24/7/365 <sup>3</sup>





Shown with options

Large Workgroup		
MC780+/MC780f+/MC780fx+	MC873dn/MC873dnc/MC873dnx	ES9465 MFP/ES9475 MFP
Up to 42 ppm Color and Mono <sup>1</sup> As fast as 9 seconds Color, 8 seconds Mono <sup>1</sup>	Up to 35 ppm Color and Mono <sup>1</sup> As fast as 9.5 seconds <sup>1</sup>	<b>ES9465 MFP</b> – Up to 35 ppm Color/Mono; <b>ES9475 MFP</b> – Up to 50 ppm Color/Mono <sup>1</sup> <b>ES9465 MFP</b> – As fast as 8.1 seconds Color, 6.4 sec. Mono <sup>1</sup> <b>ES9475 MFP</b> – As fast as 6.1 seconds Color, 4.7 sec. Mono <sup>1</sup>
Up to 1200 x 600 dpi High-Speed USB v2.0, USB Host (x2); 1 Gigabit Ethernet (10/100/1000 Base-TX); Apple AirPrint 160 GB secured HDD, standard Standard Up to 150,000 prints/copies	Up to 1200 x 600 dpi High-Speed USB v2.0, USB Host (x2); 1 Gigabit Ethernet (10/100/1000 Base-T); Optional Wireless (802.11 a/b/g/n); Apple AirPrint; Google Cloud Print 250 GB secured HDD, standard Standard Up to 100,000 pages	Up to 600 x 1200 dpi High-Speed USB v2.0, USB Host (x2); 1 Gigabit Ethernet (1000 Base-T); Optional Wireless (802.11 b/g/n) 2 GB (standard and max.) Standard <b>ES9465 MFP</b> – 175,000 pages; <b>ES9475 MFP</b> – 225,000 pages
Up to 42 cpm Color and Mono <sup>1</sup> As fast as 13 seconds Color and Mono <sup>1</sup>	35 cpm Color and Mono <sup>1</sup> As fast as 10 seconds <sup>1</sup>	<b>ES9465 MFP</b> – Up to 35 cpm Color/Mono; <b>ES9475 MFP</b> – Up to 50 cpm Color/Mono <sup>1</sup> <b>ES9465 MFP</b> – As fast as 8.1 seconds Color, 6.4 sec. Mono <sup>1</sup> <b>ES9475 MFP</b> – As fast as 6.1 seconds Color, 4.7 sec. Mono <sup>1</sup>
Up to 600 x 600 dpi Up to 100 letter-size sheets (Reversing ADF) Up to 999 copies	Up to 600 x 600 dpi Up to 100 letter-size sheets (Reversing ADF) Up to 999 copies	Up to 600 x 600 dpi 100-sheet Reversing Auto Document Feeder Up to 999 copies
8.5" x 14" Up to 600 dpi Scan to Filing box; Shared folder; E-mail; USB memory stick; WSD scan PDF, PDF/A-1b, Slim PDF, Secure PDF, TIFF, JPEG, XPS	11" x 17" Up to 600 dpi Folder (CIFS/FTP/HTTP), E-mail (with LDAP support), USB memory, Scan to computer (with Actkey), Remote Scan PDF, Secure PDF, High compression-PDF, S-TIFF/M-TIFF, JPEG, XPS	11" x 17" Up to 600 x 600 dpi Filing box, Shared folder, Email, FTP, USB memory, Hard disk drive, WS scan TIFF, XPS, PDF, Slim PDF, JPEG
33.6 Kbps Super G3 Approx. 3 seconds/page <sup>2</sup> 1 GB (shared)	33.6 kbps Super G3 2 seconds/page <sup>2</sup> 8 MB (shared)	33.6 Kbps Super G3 3 seconds/page <sup>2</sup> 1 GB (shared)
<b>MC780+</b> : 530 sheets + 100 sheet multi-purpose tray <b>MC780f+</b> : 1,160 sheets, <b>MC780fx+</b> : 2,630 sheets  <b>MC780+/MC780fx+</b> : 3,160 sheets, <b>MC780f+</b> : 1,690 sheets	<b>MC873dn/dnc</b> – 400 sheets (300 sheet Main Tray + 100-sheet Multipurpose Tray); <b>MC873dnx</b> – 1,470 sheets (300 sheet Main Tray + 2 x 535-sheet Tray + MPT); <b>All 3 configurations</b> – 100-sheet RADF  <b>MC873dn/dnx</b> – 2,005 sheets with optional 2nd/3rd/4th 535-sheet Trays; <b>MC873dnc</b> – 935 sheets with optional 535-sheet Tray  20-sheet off-line stapler	1,200 sheets: 550-sheet Trays 1 and 2 plus 100-sheet Multi-purpose Tray  3,200 sheets: 2,000-sheet Large Capacity Feeder (LCF), 550-sheet Trays 1 and 2 plus 100-sheet MPT  500-sheet Inner Finisher (ES9465 MFP only); 2,250-sheet Multi-Staple Finisher; 3,250 Saddle-Stitch Finisher; 150- to 250-sheet Job Separator
9" color graphic touchscreen; Alphanumeric keypad; Function buttons <b>MC780+</b> : 20.6" x 23.8" x 26.6" (522mm x 604mm x 675mm) <b>MC780f+</b> : 20.6" x 23.8" x 42.5" (522mm x 604mm x 1,079mm) <b>MC780fx+</b> : 20.6" x 23.8" x 47.8" (522mm x 604mm x 1,215mm) <b>MC780+</b> : 105.8 lb. (48 kg); <b>MC780f+</b> : 176.4 lb. (80 kg); <b>MC780fx+</b> : 172.4 lb. (78.2 kg)	7" color graphic LCD tilting touch-screen display; alphanumeric keypad and function buttons <b>MC873dn</b> – 22.2" x 23.6" x 27.6" (563mm x 600mm x 700mm) including RADF; <b>MC873dnc</b> – 22.2" x 23.6" x 42.4" (563mm x 600mm x 1078mm); <b>MC873dnx</b> – 22.2" x 23.6" x 42.4" (563mm x 600mm x 1078mm) <b>MC873dn</b> – 141.1 lb. (64 kg); <b>MC873dnc</b> – 181.9 lb. (82.5 kg); <b>MC873dnx</b> – 190.9 lb. (86.6 kg). Includes all consumables.	9" color graphic LCD tilting touch-screen display; alphanumeric keypad and function buttons 23" x 25.3" x 36.3" (585 mm x 643 mm x 922 mm)  166.4 lb. (75.5 kg) without consumables
MFP: 1-Year limited On-Site <sup>3</sup> Digital LED Printheads: 5-Year limited Live, toll-free 24/7/365 <sup>1</sup>	MFP: 1-Year limited On-Site <sup>3</sup> Digital LED Printheads: 5-Year limited Live, toll-free 24/7/365 <sup>1</sup>	Digital LED Printheads: 5-Year limited Live, toll-free 24/7/365 <sup>1</sup>



Shown with optional 2nd Tray

### Desktop

#### B4600/B4600n/B4600n PS

#### B412dn

#### B432dn

Performance	B4600/B4600n/B4600n PS	B412dn	B432dn
Print Speed	Up to 27 ppm <sup>1</sup>	Up to 35 ppm <sup>1</sup>	Up to 42 ppm <sup>1</sup>
1st Page Out	As fast as 5.0 seconds <sup>1</sup>	As fast as 5 seconds <sup>1</sup>	As fast as 4.5 seconds <sup>1</sup>
Resolution	Up to 2400 x 600 dpi	1200 x 1200 dpi	1200 x 1200 dpi
Processor	266 MHz/32-bit PowerPC	667 MHz CPU	667 MHz CPU
Memory (Standard/Max)	32 MB/288 MB	3 GB shared memory <sup>3</sup>	3 GB shared memory <sup>3</sup>
Memory Storage	N/A	2.5 GB flash	2.5 GB flash
Monthly Duty Cycle	Up to 40,000 pages	Up to 60,000 pages	Up to 80,000 pages
Compatibility			
Emulations	PCL 5e, PCL 6; IBM ProPrinter III XL; Epson FX; PostScript 3 (standard on B4600n PS; optional on B4600/B4600n)	PCL® 5e and PCL 6; PDF (v1.7); XPS; IBM® ProPrinter®; Epson® FX	PCL 5e and PCL 6; PostScript 3; PDF (v1.7); XPS; IBM ProPrinter; Epson FX
Interfaces	USB v2.0 and Parallel standard; Ethernet via OkiLAN® Internal or External Print Server <sup>2</sup> ; optional Serial	Standard – High-Speed USB v2.0, 1 Gigabit Ethernet (10/100/1000 Base-TX); Optional – IEEE802.11 a/b/g/n Wireless (WPA2 Enterprise)	Standard – High-Speed USB v2.0, 1 Gigabit Ethernet (10/100/1000 Base-TX); Optional – IEEE802.11 a/b/g/n Wireless (WPA2 Enterprise)
Paper Handling			
Paper Input (Standard)	250-sheet Letter/Legal/Universal tray; single-sheet manual feed slot	350 sheets (250-sheet standard paper tray + 100-sheet MPT)	350 sheets (250-sheet standard paper tray + 100-sheet MPT)
Paper Input (Max)	750 sheets with optional 500-sheet 2nd tray	Optional 530-sheet 2nd paper tray (880 sheets max)	Optional 530-sheet 2nd paper tray (880 sheets max)
Duplex (2-sided) Printing	Manual	Standard	Standard
Media Sizes	3.5" x 5.8" min. to 8.5" x 14" max.	3.4" x 5.5" min. to 8.5" x 14" and up to 8.5" x 52" banners	3.4" x 5.5" min. to 8.5" x 14" and up to 8.5" x 52" banners
Environmental			
Printer Size (WxDxH)	14" x 15.6" x 8.5" (355mm x 396mm x 216mm)	15.2" x 14.3" x 9.6" (387 mm x 364 mm x 245 mm)	15.2" x 14.3" x 9.6" (387 mm x 364 mm x 245 mm)
Printer Weight (Approx.)	22 lb. (10.0 kg)	26.5 lb. (12 kg)	26.5 lb. (12 kg)
Consumables			
Toner (Standard/High-Capacity)	3,000 pages <sup>4,5</sup>	3,000 pages/7,000 pages <sup>4,5</sup>	3,000 pages/7,000 pages <sup>4,5</sup>
Extra-High Capacity Toner	7,000 pages <sup>4,5</sup>	N/A	12,000 pages <sup>4,5</sup>
Image Drum	25,000 pages <sup>6</sup>	30,000 pages <sup>6</sup>	30,000 pages <sup>6</sup>
Warranty & Support			
Warranty	Printer: 1-Year limited Carry-in Depot <sup>7</sup> Digital LED Printhead: 5-Year limited	Printer: 1-Year limited Carry-in Depot <sup>7</sup> Digital LED Printhead: 5-Year limited	Printer: 1-Year limited Carry-in Depot <sup>7</sup> Digital LED Printhead: 5-Year limited
Support	Live, toll-free 24/7/365 <sup>7</sup>	Live, toll-free 24/7/365 <sup>7</sup>	Live, toll-free 24/7/365 <sup>7</sup>



Small Workgroup	Mid Workgroup	
B512dn	B721dn	B731dn
Up to 47 ppm, 20 ipm duplex <sup>1</sup>	Up to 49 ppm, 40 ipm duplex <sup>1</sup>	Up to 55 ppm, 42 ipm duplex <sup>1</sup>
As fast as 4.5 seconds <sup>1</sup>	As fast as 5 seconds <sup>1</sup>	As fast as 5 seconds <sup>1</sup>
Up to 1200 x 1200 dpi	Up to 1200 x 1200 dpi	Up to 1200 x 1200 dpi
667 MHz CPU	800 MHz	800 MHz
3 GB shared memory <sup>3</sup>	256 MB/768 MB	256 MB/768 MB
2.5 GB flash	160 GB HDD optional	160 GB HDD optional
Up to 100,000 pages	Up to 250,000 pages	Up to 280,000 pages
PCL 5e and PCL 6; PostScript 3; PDF (v1.7); XPS; IBM ProPrinter; Epson FX	PCL 5e, PCL 6; Postscript 3; PDF v1.8; IBM ProPrinter; Epson FX, XPS	PCL 5e, PCL 6; Postscript 3; PDF v1.8; IBM ProPrinter; Epson FX, XPS
Standard – High-Speed USB v2.0, 1 Gigabit Ethernet (10/100/1000 Base-TX); Optional – IEEE802.11 a/b/g/n Wireless (WPA2 Enterprise)	High-speed USB; USB Host; 1 Gigabit Ethernet (10/100/1000 Base-TX); models with Wireless or Parallel interface available by special order	High-speed USB; USB Host; 1 Gigabit Ethernet (10/100/1000 Base-TX); models with Wireless or Parallel interface available by special order
630-sheets (530-sheet standard paper tray + 100-sheet MPT)	630-sheets (530-sheet 1st tray + 100-sheet multi-purpose tray)	630-sheets (530-sheet 1st tray + 100-sheet multi-purpose tray)
Optional 530-sheet 2nd paper tray (1,160 sheets max)	3,160 sheets with optional 530-sheet 2nd tray and optional 2,000-sheet feeder	3,160 sheets with optional 530-sheet 2nd tray and optional 2,000-sheet feeder
Standard	Standard	Standard
3.4" x 5.5" min. to 8.5" x 14" max and up to 8.5" x 52" banners	3.4" x 5.5" min. to 8.5" x 14" max and up to 8.5" x 52" banners	3.4" x 5.5" min. to 8.5" x 14" max and up to 8.5" x 52" banners
15.2" x 15.5" x 11.2" (387 mm x 394 mm x 286 mm)	17.1" x 19.6" x 16.1" (435mm x 499mm x 410mm)	17.1" x 19.6" x 16.1" (435mm x 499mm x 410mm)
28.7 lb. (13 kg)	59.5 lb. (27 kg)	59.5 lb. (27 kg)
3,000/7,000 pages <sup>4,5</sup>	18,000 pages <sup>4,5</sup>	18,000 pages / 25,000 pages <sup>4,5</sup>
12,000 pages <sup>4,5</sup>	25,000 pages <sup>4,5</sup>	36,000 pages <sup>3,4</sup>
30,000 pages <sup>6</sup>	1-piece print cartridge	1-piece print cartridge
Printer: 1-Year limited Carry-in Depot <sup>7</sup> Digital LED Printhead: 5-Year limited	Printer: 1-Year limited On-Site <sup>7</sup> Digital LED Printhead: 5-Year limited	Printer: 1-Year limited On-Site <sup>7</sup> Digital LED Printhead: 5-Year limited
Live, toll-free 24/7/365 <sup>7</sup>	Live, toll-free 24/7/365 <sup>7</sup>	Live, toll-free 24/7/365 <sup>7</sup>





## Desktop

### MB472w

### MB492

### MB562w

Printer			
Print Speed	Up to 35 ppm <sup>1</sup>	Up to 42 ppm <sup>1</sup>	Up to 47 ppm <sup>1</sup>
1st Page Out	As fast as 5 seconds <sup>1</sup>	As fast as 5 seconds <sup>1</sup>	As fast as 5 seconds <sup>1</sup>
Resolution	Up to 1200 x 1200 dpi	Up to 1200 x 1200 dpi	Up to 1200 x 1200 dpi
Interfaces	High-Speed USB v2.0 (Device and Host), 1 Gigabit Ethernet (10/100/1000 Base-TX); IEEE802.11 a/b/g/n Wireless; Apple AirPrint; Google Cloud Print	High-Speed USB v2.0 (Device and Host), 1 Gigabit Ethernet (10/100/1000 Base-TX); Apple AirPrint; Google Cloud Print	High-Speed USB v2.0 (Device and Host), 1 Gigabit Ethernet (10/100/1000 Base-TX); IEEE802.11 a/b/g/n Wireless; Apple AirPrint; Google Cloud Print
Memory (RAM/Shared or Storage)	512 MB RAM + 2.5 GB flash shared memory	512 MB RAM + 2.5 GB flash shared memory	512 MB RAM + 2.5 GB flash shared memory
Duplex (2-sided) Printing	Standard	Standard	Standard
Monthly Duty Cycle	Up to 60,000 pages	Up to 80,000 pages	Up to 100,000 pages
Copier			
Copy Speed	Up to 35 cpm <sup>1</sup>	Up to 37.5 cpm <sup>1</sup>	Up to 37.5 cpm <sup>1</sup>
1st Copy Out	As fast as 10 seconds <sup>1</sup>	As fast as 10 seconds <sup>1</sup>	As fast as 10 seconds <sup>1</sup>
Resolution	Up to 600 x 600 dpi	Up to 600 x 600 dpi	Up to 600 x 600 dpi
ADF Capacity	50 sheets	50 sheets	50 sheets
Max Number of Copies	99 copies	99 copies	99 copies
Scanner			
Scanner Platen Size	Letter/A4	Letter/A4	Letter/A4
Scan Resolution	600 dpi	Up to 600 dpi	Up to 600 dpi
Scan-to Functionality	Folder (CIFS/FTP/HTTP), E-mail (with LDAP support), USB memory, (RAW/G3/G4 Compressed), Scan to computer (with Actkey)	Folder (CIFS/FTP/HTTP), E-mail (with LDAP support), USB memory, (RAW/G3/G4 Compressed), Scan to computer (with Actkey)	Folder (CIFS/FTP/HTTP), E-mail (with LDAP support), USB memory, (RAW/G3/G4 Compressed), Scan to computer (with Actkey)
File Formats Supported	PDF, Secure PDF, S-TIFF/M-TIFF, JPEG, XPS	PDF, Secure PDF, S-TIFF/M-TIFF, JPEG, XPS	PDF, Secure PDF, S-TIFF/M-TIFF, JPEG, XPS
Fax			
Modem Speed	33.6 kbps Super G3	33.6 Kbps Super G3	33.6 Kbps Super G3
Transmission Speed	N/A	N/A	N/A
Fax Memory	4 MB (approx. 200 pages <sup>2</sup> )	4 MB (approx. 200 pages <sup>2</sup> )	4 MB (approx. 200 pages <sup>2</sup> )
Paper Handling			
Standard Paper Input	250-sheet Tray + 100-sheet Multipurpose Tray (up to 100 sheets/10 envelopes); 50-sheet Duplex RADF	250 sheet Tray + Multipurpose Tray (up to 100 sheets, 10 envelopes); 50-sheet RADF	530 sheets + MPT; 50-sheet RADF
Maximum Paper Input	Optional 530-sheet 2nd Tray; 880 sheets max	Optional 530-sheet 2nd paper tray: 880 sheets	Optional 530-sheet 2nd paper tray: 1,160 sheets max
Finishing Capabilities	N/A	N/A	N/A
Environmental			
Operator Panel	3.5" backlit LCD display; 1-Touch function buttons; Alpha-numeric keypad; full QWERTY keyboard (behind 1-Touch keypad)	7" color, tilting touchscreen display	7" color, tilting touchscreen display
MFP Size (WxDxH, Basic Model)	16.8" x 16.7" x 17.9" (427mm x 425mm x 455mm)	16.8" x 18.8" x 17.9" (427mm x 478mm x 455mm)	16.8" x 18.8" x 19.5" (427mm x 478mm x 496mm)
MFP Weight (Approx.)	44.1 lb. (20 kg)	46.3 lb. (21 kg)	48.5 lb. (22 kg)
Warranty/Support			
System Warranty	MFP: 1-Year limited On-Site <sup>3</sup> Digital LED Printhead: 5-Year limited	MFP: 1-Year limited On-Site <sup>3</sup> Digital LED Printhead: 5-Year limited	MFP: 1-Year limited On-Site <sup>3</sup> Digital LED Printhead: 5-Year limited
Support	Live, toll-free 24/7/365 <sup>3</sup>	Live, toll-free 24/7/365 <sup>3</sup>	Live, toll-free 24/7/365 <sup>3</sup>

**COREFIDO**  
5 YEAR WARRANTY



**COREFIDO**  
5 YEAR WARRANTY



## Mid Workgroup

### MB760+/MB760+ Wireless

### MB770+/MB770f+/MB770fx+

Up to 49 ppm, 40 ipm duplex<sup>1</sup>

As fast as 5 seconds<sup>1</sup>

Up to 1200 x 1200 dpi

High-Speed USB v2.0, USB Host (x2); 1 Gigabit Ethernet (10/100/1000 Base-TX); IEEE802.11 a/b/g/n Wireless (MB760+ Wireless only); Apple AirPrint

2 GB/160 GB secured HDD, standard  
Standard

Up to 250,000 pages

Up to 55 ppm, 42 ipm duplex<sup>1</sup>

As fast as 5 seconds<sup>1</sup>

Up to 1200 x 1200 dpi

High-Speed USB v2.0, USB Host (x2); 1 Gigabit Ethernet (10/100/1000 Base-TX); Apple AirPrint

2 GB/160 GB secured HDD, standard  
Standard

Up to 280,000 pages

Up to 49 cpm<sup>1</sup>

As fast as 8 seconds<sup>1</sup>

Up to 600 x 600 dpi

Up to 100-sheet Duplexing/Reversing ADF

999 copies

Up to 55 cpm<sup>1</sup>

As fast as 8 seconds<sup>1</sup>

Up to 600 x 600 dpi

Up to 100-sheet Duplexing/Reversing ADF

999 copies

Legal

Up to 600 dpi

Scan to filing box, Shared folder, E-mail, USB memory stick, WSD scan

Legal

Up to 600 dpi

Scan to filing box, Shared folder, E-mail, USB memory stick, WSD scan

TIFF, JPEG, PDF, PDF/A-1b, Slim PDF, Secure PDF, XPS

TIFF, JPEG, PDF, PDF/A-1b, Slim PDF, Secure PDF, XPS

33.6 Kbps Super G3

Approx. 3 seconds/page<sup>2</sup>

1 GB shared

33.6 Kbps Super G3

Approx. 3 seconds/page<sup>2</sup>

1 GB shared

530 sheets + 100-sheet MPF

**MB770+**: 630 sheets; **MB770f+**: 1,160 sheets; **MB770fx+**: 2,630 sheets

3,160 sheets

**MB770+**: 3,160 sheets; **MB770f+**: 1,690 sheets; **MB770fx+**: 3,160 sheets

N/A

**MB770+**: 20-sheet off-line stapler; **MB770f+/MB770fx+**: 50-sheet inline stapler

9" color graphic touch-screen display; Alphanumeric keypad; Function buttons

9" color graphic touch-screen display; Alphanumeric keypad; Function buttons

20.6" x 23.8" x 26.6"  
(522mm x 604mm x 675mm)

**MB770+**: 20.6" x 23.8" x 26.6" (522mm x 604mm x 675mm)

**MB770f+**: 20.6" x 23.8" x 42.5" (522mm x 604mm x 1,079mm)

**MB770fx+**: 20.6" x 23.8" x 47.8" (522mm x 604mm x 1,215mm)

105.8 lb. (48 kg)

**MB770+**: 105.8 lb. (48 kg); **MB770f+**: 176.4 lb. (80 kg); **MB770fx+**: 172.4 lb. (78.2 kg)

MFP: 1-Year limited On-Site<sup>3</sup>

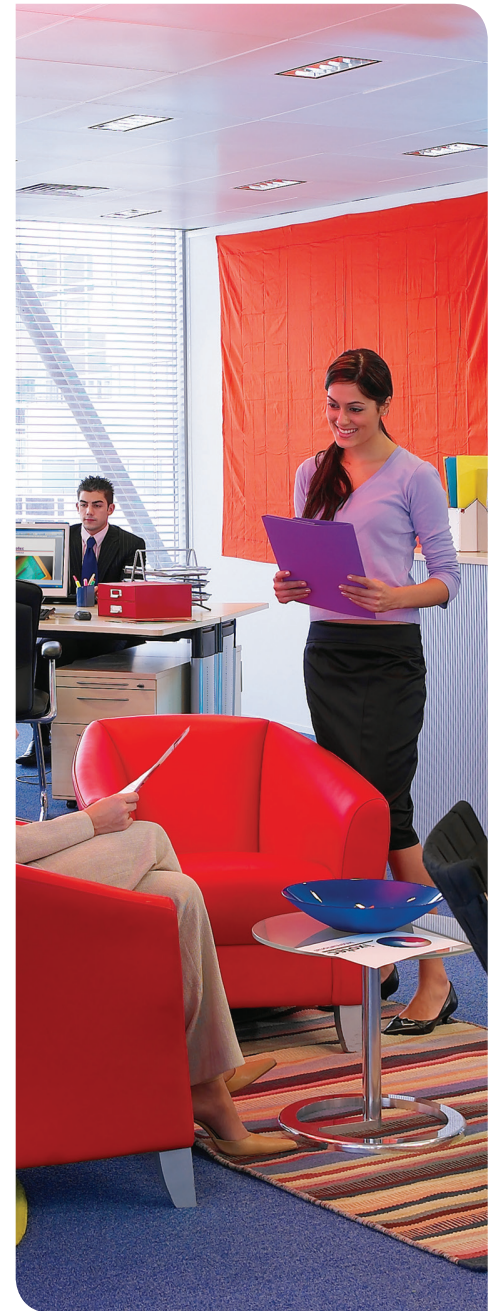
Digital LED Printhead: 5-Year limited

Live, toll-free 24/7/365<sup>3</sup>

MFP: 1-Year limited On-Site<sup>3</sup>

Digital LED Printhead: 5-Year limited

Live, toll-free 24/7/365<sup>3</sup>





### 9-Pin Printers

	ML1120	ML186 Series: Parallel and Serial	ML320/321 Turbo Series: Turbo, Turbo/n, Turbo/D	ML420/421 Series
<b>Performance</b>				
Print Method	9-Pin	9-Pin	9-Pin	9-Pin
Print Speed: Near-Letter Quality	62.5 cps	62.5 cps	75 cps	95 cps
Utility	250 cps	250 cps	300 cps	380 cps
High-Speed Draft	333 cps	333 cps	390 cps	510 cps
Super-Speed Draft	375 cps	375 cps	435 cps	570 cps
Memory	64K RAM	128K RAM	64K RAM	128K RAM
<b>Compatibility</b>				
Emulations	Epson FX, IBM ProPrinter, MICROLINE	IBM® 2480, Epson® ESC/P and OKI® MICROLINE®	Turbo and Turbo/n: Epson FX, IBM ProPrinter III, MICROLINE; Turbo/D: IBM ProPrinter®, DEC ANSI x 3.64	Epson FX, IBM ProPrinter, OKI MICROLINE
Interfaces	Standard – IEEE 1284 Bi-directional Parallel, USB 2.0 and RS232-C Serial  Optional – Ethernet via OkilAN 6020e+10/100 Base-T External Print Server	Standard – Parallel; USB  Optional – Ethernet via OkilAN® (10/100 Base-T); Serial	Standard – Parallel; USB; OkilAN 10/100 Base-T Internal Print Server (ML320T/n, ML321T/n)  Optional – OkilAN Internal or External Print Server (10/100 Base-T); Serial	Standard – Parallel; USB; OkilAN 10/100 Base-T Internal Print Server (ML420/n, ML421/n)  Optional – OkilAN Internal or External Print Server (10/100 Base-T); Serial
Barcodes	11 barcodes	8 barcodes	8 barcodes	8 barcodes
<b>Paper Handling</b>				
Paper Input	Single-/multi-part, continuous forms, cut sheet, envelopes, card stock, labels	Single-/multi-part, continuous, envelopes, index stock, labels, receipts, reports	Single-/multi-part, continuous, envelopes, index stock, labels, receipts, reports	Single-/multi-part, continuous, envelopes, index stock, labels, receipts, reports
No. Copies/Thickness (Max)	5 copies/0.014" (0.39mm)	4 copies Rear Feed; 5 copies Bottom Feed/0.011" (0.28mm)	6 copies/0.017" (0.43mm); expandable to 0.031" (0.78mm) <sup>3</sup>	6 copies/0.017" (0.43mm)
<b>Reliability</b>				
MTBF	10,000 hours <sup>1</sup>	20,000 hours <sup>1</sup>	10,000 hours <sup>1</sup>	20,000 hours <sup>1</sup>
Monthly Duty Cycle	18,000 pages <sup>1</sup>	13,000 pages <sup>1</sup>	ML320T Series: 20,000 pages <sup>1</sup> ML321T Series: 13,000 pages <sup>1</sup>	ML420: 24,000 pages <sup>1</sup> ML421: 17,000 pages <sup>1</sup>
Printhead Life	400 million strokes per wire	200 million characters	200 million characters	400 million characters
<b>Consumables</b>				
Ribbon	4 million-character life	Black Ribbon – 3 million-character life	Black Ribbon – 3 million-character life	Black Ribbon – 4 million-character life
<b>Warranty &amp; Support</b>				
Warranty	2-Year limited Carry-in Depot: parts, labor & printhead <sup>2</sup>	3-Year limited Carry-in Depot: parts, labor & printhead <sup>2</sup>	1-Year limited Carry-in Depot: parts, labor & printhead <sup>2</sup>	3-Year limited Carry-in Depot: parts, labor & printhead <sup>2</sup>
Support	Live, toll-free 24/7/365 <sup>2</sup>	Live, toll-free 24/7/365 <sup>2</sup>	Live, toll-free 24/7/365 <sup>2</sup>	Live, toll-free 24/7/365 <sup>2</sup>





24-Pin Printers				
ML620/621 Series	ML390/391 Turbo Series: Turbo, Turbo/n	ML490/491 Series	ML690/691 Series	ML395
9-Pin	24-Pin	24-Pin	24-Pin	24-Pin
113 cps	105 cps	126 cps	120 cps	165 cps
450 cps	315 cps	380 cps	360 cps	245 cps
600 cps	390 cps	420 cps	480 cps	485 cps
700 cps	N/A	475 cps	N/A	610 cps
128K RAM	64K RAM	128K RAM	128K RAM	64K RAM
Epson ESC/P, IBM PPDS, MICROLINE	Epson ESC/P2; IBM ProPrinter; IBM AGM and MICROLINE co-resident	Epson LQ, IBM ProPrinter, IBM AGM, IBM XL24, MICROLINE	Epson LQ/ESC/P2, IBM PPDS, IBM AGM	Epson LQ 2550/IBM XL 24e
Standard – IEEE Bi-directional Parallel, USB 2.0	Standard – Parallel; USB; OkiLAN 10/100 Base-T Internal Print Server (ML390T/n, ML391T/n)	Standard – Parallel; USB; OkiLAN 10/100 Base-T Internal Print Server (ML490/n, ML491/n)	Standard – IEEE Bi-directional Parallel, USB 2.0	Standard – Parallel; Serial
Optional – Ethernet via OkiLAN 6130 10/100 Base-T External Print Server; RS232-C Serial	Optional – OkiLAN Internal or External Print Server (10/100 Base-T); Serial	Optional – OkiLAN Internal or External Print Servers (10/100 Base-T); Serial	Optional – Ethernet via OkiLAN 6130 10/100 Base-T External Print Server; RS232-C Serial	Optional – OkiLAN External Print Server (10/100 Base-T)
13 barcodes	8 barcodes	8 barcodes	13 barcodes	8 barcodes
Single-/multi-part, continuous, cut sheet, roll paper <sup>4</sup> , envelopes, card stock, labels	Single-/multi-part, continuous, envelopes, index stock, labels, receipts, reports	Single-/multi-part, continuous, envelopes, index stock, labels, receipts, reports	Single-/multi-part, continuous, cut sheet, roll paper <sup>4</sup> , envelopes, card stock, labels	Single-/multi-part, continuous, envelopes, index stock, labels, receipts, reports
7 copies/0.017" (0.44mm) front/rear path; 0.019" (0.48mm) bottom pull	4 copies/0.017" (0.43mm); expandable to 0.031" (0.78mm) <sup>3</sup>	5 copies/0.017" (0.43mm)	7 copies/0.017" (0.44mm) front/rear path; 0.019" (0.48mm) bottom pull	4 copies/up to 0.02" (0.5mm)
25,000 hours <sup>1</sup>	10,000 hours <sup>1</sup>	20,000 hours <sup>1</sup>	25,000 hours <sup>1</sup>	8,000 hours <sup>1</sup>
ML620: 28,000 pages <sup>1</sup> ML621: 20,000 pages <sup>1</sup>	ML390T: 18,000 pages <sup>1</sup> ML391T: 12,000 pages <sup>1</sup>	ML490: 20,000 pages <sup>1</sup> ML491: 12,000 pages <sup>1</sup>	ML690: 23,000 pages <sup>1</sup> ML691: 14,000 pages <sup>1</sup>	17,000 pages <sup>1</sup>
400 million characters	200 million characters	400 million characters	400 million characters	200 million characters
Black Ribbon – ML620: 8 million-character life; ML621: 13 million-character life	Black Ribbon – 2 million-character life	Black Ribbon – 4 million-character life	Black Ribbon – ML690: 8 million-character life; ML691: 13 million-character life	Black Ribbon – 5 million-character life;
3-Year limited Carry-in Depot: parts, labor & printhead <sup>2</sup>	1-Year limited Carry-in Depot: parts, labor & printhead <sup>2</sup>	3-Year limited Carry-in Depot: parts, labor & printhead <sup>2</sup>	3-Year limited Carry-in Depot: parts, labor & printhead <sup>2</sup>	1-Year limited Carry-in Depot: parts, labor & printhead <sup>2</sup>
Live, toll-free 24/7/365 <sup>2</sup>	Live, toll-free 24/7/365 <sup>2</sup>	Live, toll-free 24/7/365 <sup>2</sup>	Live, toll-free 24/7/365 <sup>2</sup>	Live, toll-free 24/7/365 <sup>2</sup>



### High-Speed Printers

#### PACEMARK® 3410

#### ML8810 Series: ML8810, ML8810n

#### PACEMARK® 4410 Series: PM4410, PM4410n

Performance			
Print Method	9-Pin	18-Pin (Dual 9-Pin)	18-Pin (Dual 9-Pin, diamond array)
Print Speed: Near-Letter Quality	105 cps	150 cps	300 lines per minute (lpm) 200 cps
Utility	420 cps	600 cps	800 cps
High-Speed Draft	550 cps	720 cps	1,066 cps
Super-Speed Draft	N/A	810 cps	N/A
Memory	64K RAM	256K RAM	512K RAM
Compatibility			
Emulations	Epson® FX-1050; IBM® ProPrinter® III; MICROLINE® and PACEMARK® (optional)	IBM ProPrinter III, Epson FX-1050, MICROLINE	Epson FX, IBM ProPrinter III
Interfaces	Standard – Parallel; Serial Optional – OkiLAN® External Print Server (10/100 Base-T)	Standard – HS-USB; Parallel; OkiLAN 10/100 Base-T Internal Ethernet Print Server (ML8810n) Optional – OkiLAN Internal Print Server (10/100 Base-T); Serial	Standard – Parallel; Serial; OkiLAN 10/100 Base-T Internal Print Server (PM4410n) Optional – OkiLAN Internal or External Print Server (10/100 Base-T)
Barcodes	8 barcodes	8 barcodes	8 barcodes
Paper Handling			
Paper Input	Single-/multi-part, continuous, cut sheet, envelopes, index stock, labels, reports, invoices	Single-/multi-part, continuous, cut sheet, envelopes, index stock, labels, reports	Continuous: single-/multi-part, index stock, envelopes, labels, reports
No. Copies/Thickness (Max)	8 copies/0.02" (0.5mm)	8 copies/0.019" (0.48mm)	10 copies/0.031" (0.78mm)
Reliability			
MTBF	8,000 hours <sup>1</sup>	10,000 hours <sup>1</sup>	15,000 hours <sup>1</sup>
Monthly Duty Cycle	19,000 pages <sup>1</sup>	24,000 pages <sup>1</sup>	35,000 pages <sup>1</sup>
Printhead Life	200 million characters	400 million characters	400 million characters
Consumables			
Ribbon	Black Ribbon – 7.5 million-character life	Black Ribbon – 10 million-character life	Black Ribbon – 15 million-character life
Warranty & Support			
Warranty	1-Year limited On-Site: parts, labor & printhead <sup>2</sup>	1-Year limited On-Site: parts, labor & printhead <sup>2</sup>	2-Year limited On-Site: parts, labor & printhead <sup>2</sup>
Support	Live, toll-free 24/7/365 <sup>2</sup>	Live, toll-free 24/7/365 <sup>2</sup>	Live, toll-free 24/7/365 <sup>2</sup>

# Unmatched Service and Support

**Total commitment to our customers.** OKI is resolute in the commitment to exceed expectations and deliver comprehensive, individualized solutions that help drive your business goals. We value each customer as though you are our only one, addressing your needs as if they were our own. Our proactive approach to customer service enables us to anticipate your changing needs and helps you reach your goals.

In addition to the personalized approach you experience when you work directly with any of our employees, you will also benefit from the services we offer—which can be customized to fit your needs—including:

- On-site support
- Carry-in depot support
- Customized web portal services
- Free assessment tools

OKI Certified field technicians deliver quality printer repair and maintenance services on all OKI-brand printers and MFPs. And we back that up with live, North America-based technical assistance, available toll-free, 24/7/365.<sup>1</sup>

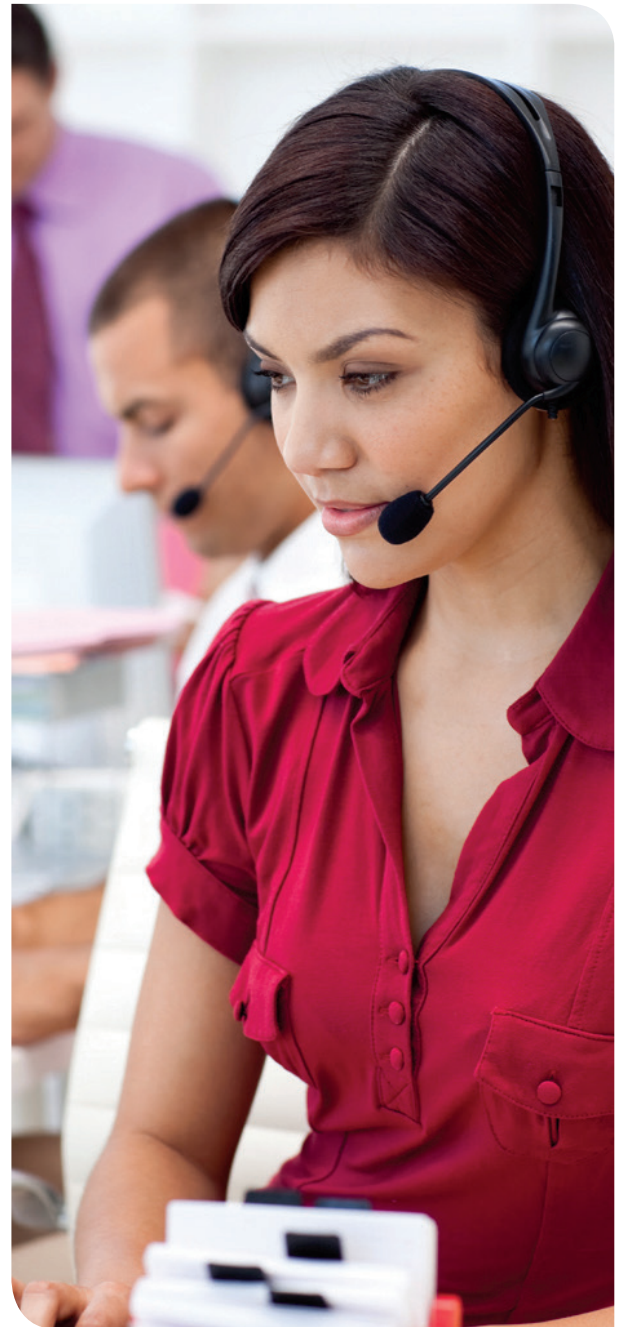
## Award-winning Excellence

Industry experts have taken notice of OKI's full line of product and service offerings that help businesses become more productive and communicate more effectively. Our long-standing commitment to technology leadership, product excellence and superior customer support is a winning combination.



**Expect more from OKI.**

<sup>1</sup> Available in the U.S. and Canada only.



# Footnotes

## Digital Color Printers

- 1. Published performance results based on laboratory testing. Individual results may vary.
- 2. Optimal performance on larger files may require additional memory.
- 3. CMYK declared yield in accordance with ISO/IEC 19798.
- 4. Printers ship with the following toner cartridge sizes:  
C331dn – 1,000-pg. CMYK starter; C531dn/C610 Series – 2,000-pg. CMYK starter; C711 Series – 4,000-pg. CMYK starter; C831 Series – 2,500-pg. CMYK starter.
- 5. Varies depending on number of printed pages per job.
- 6. Available in the U.S. and Canada only.
- 7. Optional 16 GB SD Memory Card available on C531dn, C610n/dn/dtn, C711n/dn/dtn and C831n/dn.
- 8. 2nd Paper Tray standard on C610dtn and C711dtn, optional on other models in series.
- 9. Includes weight of consumables.

## Color Multifunction Products

- 1. Published performance results based on laboratory testing. Individual results may vary.
- 2. Based on ITU-T Test Chart #1.
- 3. Available in the U.S. and Canada only.

## Digital Monochrome Printers

- 1. Published performance results based on laboratory testing. Individual results may vary.
- 2. Optional on B4600.
- 3. 512 MB RAM + 2.5 GB flash shared memory.
- 4. Declared yield in accordance with ISO/IEC 19752.
- 5. Printers ship with the following toner cartridges: B4600 Series – 3,000-pg. standard; B412dn, B432dn and B512dn – 2,000-pg. starter; B721dn and B731dn – 10,000-pg. starter.
- 6. Varies depending on the number of printed pages per job.
- 7. Available in the U.S. and Canada only.

## Monochrome Multifunction Products

- 1. Published performance results based on laboratory testing. Individual results may vary.
- 2. Based on ITU-T Test Chart #1.
- 3. Available in the U.S. and Canada only.

## Dot Matrix Printers

- 1. 25% duty cycle, 35% page density.
- 2. Available in the U.S. and Canada only.
- 3. Requires optional Push or Pull Tractor.
- 4. ML620/690 only.

Specifications subject to change without notice.

© 2015 Oki Data Americas, Inc. OKI Reg. T.M., M.D., OKIcare, OKIPOS, OKiLAN, MICROLINE Reg. T.M., Oki Electric Industry Co., Ltd. Single Pass Color T.M., PACEMARK Reg. T.M., Oki Data Corp. HD Color design T.M., Oki Data Americas, Inc. Adobe, PostScript, Acrobat Reg. T.M., Postscript 3 T.M., Adobe Systems Inc. Microsoft, Windows, VISTA, Reg. T.M., Microsoft Corp. PCL, Reg. T.M., Hewlett Packard Co. Apple, Mac Reg. T.M., AirPrint T.M., Apple Inc. EPSON, Google Cloud Print T.M., Google Inc. ESC/POS Reg. T.M., Seiko Epson Corp. IBM, ProPrinter Reg. T.M., International Business Machines, Inc., ENERGY STAR Reg. T.M., U.S. EPA. All other trademarks and registered trademarks are the property of their respective holders. All rights reserved.

### OKI DATA AMERICAS, INC.

<b>USA</b> 2000 BISHOPS GATE BLVD. MOUNT LAUREL, NJ 08054-4620 TEL: 800.OKI.DATA (800.654.3282) FAX: 856.222.5320	<b>CANADA</b> 4140B SLADEVIEW CRESCENT UNITS 7 & 8 MISSISSAUGA, ONTARIO L5L 6A1 TEL: 905.608.5000 FAX: 905.608.5040	<b>ARGENTINA/CHILE/PARAGUAY/ PERÚ/URUGUAY</b> (SUCURSAL ARGENTINA) UGARTE 3610 PISO 4º (1605) OLIVOS BUENOS AIRES, ARGENTINA TEL: +54.11.5288.7500 FAX: +54.11.5288.7599	<b>COLOMBIA/ECUADOR/VENEZUELA/ CENTROAMÉRICA Y CARIBE</b> (SUCURSAL COLOMBIA) CARRERA 13 #97-51, OFICINA 101 BOGOTÁ, COLOMBIA TEL: +57.1.218.1704	<b>OKI DATA DE MÉXICO, S.A. DE C.V.</b> MARIANO ESCOBEDO, 748 8º PISO COL. NUEVA ANZURES C.P. 11590 MÉXICO, D.F. TEL: +52.5263.8780 FAX: +52.5250.3501	<b>OKI DATA DO BRASIL INFORMÁTICA LTDA.</b> AV. ALFREDO EGÍDIO DE SOUZA ARANHA, 100 BLOCO C – 4º ANDAR 04726-170 – SÃO PAULO – SP – BRASIL TEL: +55.11.3444.3500 FAX: +55.11.3444.3502
---	--	---	---	---	---

WWW.OKIDATA.COM