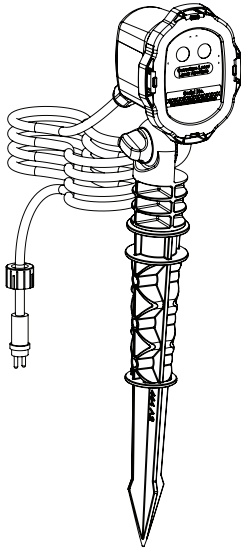




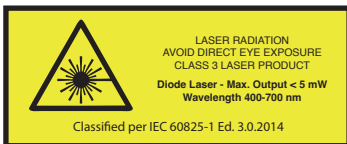
BLISSLIGHTS®

MINI™



User's Guide

Models: SPR-MIGR-STN, SPR-MIGB-STN



Please ONLY use
manufacturer-provided
power supply.

SAVE THESE INSTRUCTIONS

TABLE OF CONTENTS

Notice 1

Epilepsy Warning.....2

Introduction3

Before You Begin.....3

Parts List.....3

Setting up the Projector.....4

Operating the Projector4

Operating the Timer4

Operating the Remote Control.....5

Remote Control Functions5

Precautionary Tips for the Remote Control.....6

Precautionary Tips for Battery Installation6

Battery Disposal.....6

Installation Tips6

Product Specifications.....7

Troubleshooting7

Warranty8

Caution.....8

Cleaning Instructions8

Disposal.....8

NOTICE

CAUTION—Use of controls or adjustments or performance of procedures other than those specified herein may result in hazardous radiation exposure.

This device complies with part 15 of the FCC Rules. Operation is subject to the following two conditions: (1) This device may not cause harmful interference, and (2) this device must accept any interference received, including interference that may cause undesired operation.

This product is classified as a Class 3 laser product and complies with the applicable parts of IEC/EN 60825-1 Ed. 2.0:2007 and Ed. 3.0:2014. The manufacturer additionally certifies it complies with the US FDA Federal Laser Product Performance Standard (FLPPS) provided in 21 CFR Subchapter J, 1040.10 and 1040.11 except for allowable deviations specified in FDA Guidance documents.

Do not stare into the beams emitted from the product. Intentional long term viewing of CLASS 3 levels of laser light can be hazardous. This product uses diffractive optics to scatter the beam energy. This scattering effect causes the energy concentration to drop below the exposure limits for momentary or accidental viewing at a relatively short distance from the laser aperture. As with all bright light-sources, when you operate this device in unsupervised general public areas, it is recommended that up-close access to the light be restricted or prevented and the beams be directed into locations where persons are not expected.

This laser display device incorporates a CLASS 3B laser system which, by itself, may be hazardous. However, this laser display product incorporates a protective housing and diffractive optics in its design so that there is no exposure or human access to laser radiation during operation above the CLASS 3 limits. Each individual laser beamlet's power is below the Class 3R limit of 5 mW.

UNDER NO CIRCUMSTANCES shall attempts be made to open the protective housing or operate the device if the aperture window is damaged.

All service to this laser display device requiring the protective housing to be opened and/or removed shall be performed by service personnel or their authorized agents. Opening the protective housing voids the warranty.

NO LASERS SHOULD BE POINTED INTO THE SKY WITHIN 10 NAUTICAL MILES (18.5 km) OF AN AIRPORT. IF YOU ARE LOCATED WITHIN THIS SPECIFIC PERIMETER, WE RECOMMEND THE LASERS BE POINTED DOWN AT THE GROUND SO NO STRAY BEAMS ARE PROJECTED INTO THE AIR. CHECK WITH YOUR LOCAL AIRPORT OR PROVINCIAL GUIDELINES FOR FURTHER INFORMATION.

Important Health & Safety Notice

PHOTOSENSITIVE EPILEPSY: IF YOU HAVE A HISTORY OF EPILEPSY OR SEIZURES, CONSULT A DOCTOR BEFORE USE. CERTAIN PATTERNS MAY TRIGGER SEIZURES WITH NO PRIOR HISTORY. BEFORE USING THIS PRODUCT, CAREFULLY READ THE INSTRUCTION MANUAL.

Important Health & Safety Information

Seizures induced by light stimulation (Photosensitive Epilepsy)

If you have an epileptic condition or have had seizures, consult your doctor prior to using this product.

Some individuals are sensitive to flashing or flickering lights or geometric shapes and patterns, may have an undetected epileptic condition and may experience epileptic seizures when playing video games or watching visual content.

DISCONTINUE USE IMMEDIATELY and consult your doctor if you experience any of the following health problems or symptoms when watching visual effects by our product:

Eye soreness, altered vision, migraine, muscle twitching, convulsion or other involuntary movements, blackout, loss of awareness, or confusion or disorientation.

In addition to the above, DISCONTINUE USE IMMEDIATELY if you experience any of the following symptoms:

Headache, dizziness, nausea, fatigue, similar symptoms to motion sickness, or discomfort or pain in any body part such as eyes, ears, hands, arms, feet whilst watching.

If the condition persists, seek medical attention.

INTRODUCTION

Thank you for purchasing the BlissLights MINI Laser Projector. This product is a unique outdoor light fixture that uses holographic technology to project thousands of colorful laser stars. Light up your garden, create a fun and mesmerizing ambience indoors, or add some extra allure to your holiday display. We hope you enjoy this incredibly unique lighting experience.

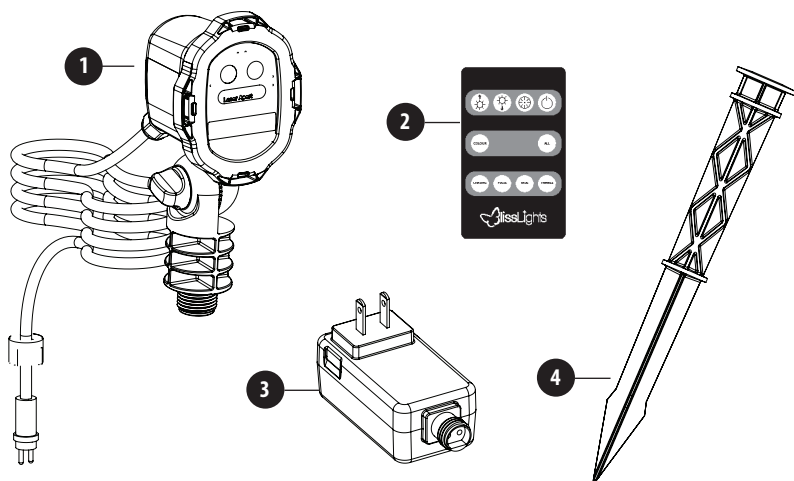
Each unit provides up to 50 x 50 ft (15.2 x 15.2 m) of star coverage. It has maximum electrical usage of 4W. The fixture housing is weather resistant ABS resin for year-round indoor or outdoor operation.

BEFORE YOU BEGIN

Immediately upon receiving the fixture, carefully unpack and check the carton contents to ensure that all parts are present and in good condition. Notify the retailer immediately and retain packing material for inspection if any parts appear damaged from shipping or the carton itself shows signs of mishandling. Save the carton and all packing materials. In the event that the fixture must be returned, it is important that the fixture be returned in the original factory box. Please see parts list below for box contents.

PARTS LIST:

- 1) Projector
- 2) Remote control (CR2025 battery included)
- 3) Power supply
- 4) Ground stake



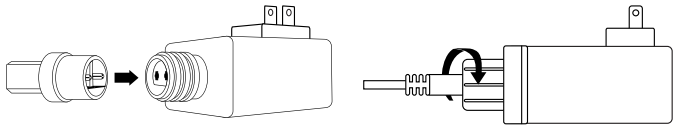
IMPORTANT NOTE:

Use only manufacturer-provided power supply. Use of 3rd party adapters may damage the unit and void the warranty.

SETTING UP THE PROJECTOR

Before operating your laser projector, please read the “Before you Begin” section and “Notice” section of this user’s guide.

1. Connect the light fixture to the provided power supply and screw on the attached water seal cap to the top of the power supply.



2. Connect the power supply into an available standard electrical outlet.
3. Attach the stake to the fixture head by twisting the fixture clockwise. Remove the stake by twisting the fixture counter-clockwise.
4. Drive the stake into the desired location by holding the top of the stake and gently pushing the stake into the ground. Do not push the fixture into the ground by pushing down on the lamp head.
5. Adjust the angle of the projected light by turning the thumbscrew attached to the side of the fixture.
6. Use the included remote control to change the settings of the light output.
7. To turn off the light, use the provided remote or remove the power plug from the electrical outlet.

OPERATING THE PROJECTOR

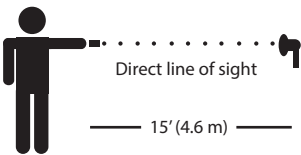
Once the laser projector is plugged in, it will enter the default mode with both the laser on and the automatic timer set to 6-hour on and 18-hour off mode. Use the included remote control to change these settings.

OPERATING THE TIMER

This light has a built-in timer that is designed to automatically shut off after 6 hours of operation. It will go into sleep mode for 18 hours and repeat the same operation thereafter. The timer will turn on once the light is plugged in. To disable the timer, press the timer button on the remote. The laser will blink twice to signal that the timer is off and that the laser will remain on. To turn the timer back on at the desired time, press the timer button again. The laser will then blink three times to signal that the timer is on.

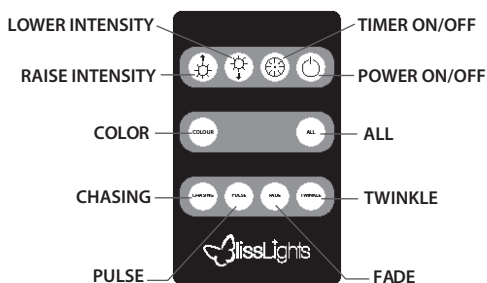
OPERATING THE REMOTE CONTROL

Use the included infrared remote control to operate the light’s features. Infrared signal does not go through solid objects, such as windows, walls, trees, shrubs, etc. Make sure there is a clear line of sight between you and the fixture. Point the remote control at the FACE of the light fixture, where the receiver is located. The remote operates up to 15’ (4.6 m) of unobstructed distance away from the face of the fixture.



REMOTE CONTROL FUNCTIONS

- **Power:** Press to put the device in standby mode. The device will save all current settings so that when the Power button is pressed again, the device will resume with the last mode before entering standby. Whenever the device is unplugged or put into standby mode, all current settings are saved and will resume when the device is restarted.
- **Timer:** Press to turn the internal 6/18 timer on or off.
- **Intensity +/-:** Press the increase and decrease buttons to change the intensity of the laser. There are five preset settings for intensity. The increase and decrease buttons only affect the intensity of the lasers while in the Color or All mode. The laser will blink once it has reached the highest or lowest intensity setting.
- **Color:** Press the color button to cycle through all combinations of the available laser colors.
- **All:** Press to turn on all available colors simultaneously (green and blue).
- **Chasing:** This mode makes each available laser color blink in sequence. Each push of the button cycles the effect through one of three different speeds: fast, medium and slow.
- **Pulse:** This mode pulses in and out in a smooth transition through all available color options. Each push of the button cycles the effect through one of three different speeds: fast, medium and slow.
- **Fade:** This mode cycles through each available color option in a fading transition. Each push of the button cycles the effect through one of three different speeds: fast, medium and slow.
- **Twinkle:** This mode creates a twinkle effect. Each push of the button cycles the effect through one of three different speeds: fast, medium and slow.



Remote FCC Compliance:

This device complies with Part 15 of FCC Rules. Operation is subject to the following two conditions: 1. this device may not cause harmful interference, and 2. this device must accept any interference received, including interference that may cause undesired operation.

PRECAUTIONARY TIPS FOR THE REMOTE CONTROL

- The remote control should be kept dry and away from heat sources. Avoid humidity. If the device responds erratically to the remote control, or doesn't respond at all, check the battery.
- Do not subject the remote control to undue physical stress, such as striking or dropping it.
- Do not attempt to clean the remote control with a volatile solvent. Wipe it with a clean, damp, soft cloth when cleaning.

PRECAUTIONARY TIPS FOR BATTERY INSTALLATION

- Do not ingest the battery.
- Non-rechargeable battery is not to be recharged.
- Battery is to be inserted with the correct polarity.
- Exhausted battery is to be removed from the product.
- Only use CR2025 3 V lithium cell replacement battery.
- Do not take the battery apart, heat the battery, or throw it into a fire.
- Keep the battery away from children and pets.
- When not using the remote control for a long period of time, remove and store battery in a cool, dry place at room temperature.

BATTERY DISPOSAL

Please, always dispose of batteries at a suitable recycling point.

Note: Batteries should be recycled or disposed of as per state/provincial and local guidelines.

INSTALLATION TIPS:

- **Do not connect the light to a dimmer pack, as a dimmer accessory may damage the laser component.**
- Use only the manufacturer-provided UL/CUL power supply.
- **Limit the use of extension cords.** If you need an extension cord, use only UL, CUL, or CSA approved 3rd party extension cords. When using outdoors, **ONLY** use extension cords that are weather resistant, such as waterproof cords.
- The darker the display area, the brighter your projection will appear. Try to avoid display areas with strong ambient light sources, such as commercial street lights or bright security flood lights.
- If you choose to mount the BlissLights for downlighting (e.g. from balcony railing, fence line, roof line, etc.), it is recommended that, for safety purposes, your lights are properly mounted using a suitable hanging clamp and safety cable.

PRODUCT SPECIFICATIONS

Star Color	Red—650 nm, Green—515 nm, Blue—445 nm
Laser Classification	Class 3R
Housing	ABS Plastic
Power Consumption	4W
Power Supply Input	110 V AC
Power Supply Output	12 VDC == 2A
Operation	Indoor/Outdoor
Operating Temperature	-22°F to 85°F (-30°C to 39°C)
Projection Coverage	Up to 50 x 50 ft
Maintenance	Maintenance Free
Dimensions	2.9 x 3.9 x 6.3 in (75 x 100 x 160 mm)
Cord Length	20 ft (6 m)
Warranty	One year

TROUBLESHOOTING

How to avoid IR interference:

If the laser or LED start and stop randomly, there is a wireless signal interference (i.e. radio control toys, remote controls for TV or entertainment systems, automatic vacuums, etc.). To verify if this is the case, please try covering the window at the bottom of the front lens with your finger to block stray infrared signals from entering the fixture. If this corrects the problem, please check the other electronic products running in the room to determine where the stray signals are coming from.

BLISSLIGHTS LIMITED WARRANTY

This product carries a limited warranty against defects in workmanship and materials. BlissLights LLC agrees to replace the defective product free of charge within the stated warranty period, when returned by the original purchaser with proof of purchase. This product is not guaranteed against wear or breakage due to misuse and/or abuse. For detailed warranty information for your country, please visit www.blisslights.com/warranty

CAUTION

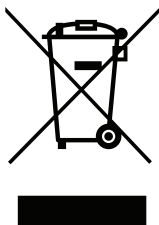
This is not a toy. Young children must be supervised while using this device at all times. This unit is not waterproof. Use and store indoors or in a dry place.

CLEANING INSTRUCTIONS

Surface clean only with a soft, dry cloth. Unplug unit before cleaning.

DISPOSAL

At the end of its serviceable life, this product should not be treated as household or general waste. It should be handed over to the applicable collection point for the recycling of electrical and electronic equipment.





BLISSLIGHTS®

blisslights.com