



PUBLIC ADDRESS SPEAKERS

PC/BS/PE/PJ Series



An innovative balance of **form and function**,
plus **superbly easy installation**.

A completely novel design that is a true combination of form and function.

TOA engineers have worked long and hard to create round speakers with an optimal balance of design and performance.

Pendant and projection speakers are inspired by the finest lighting fixtures, for a perfect harmony with architecture and decor.

Repaintable speakers allow you to customize the color any way you like.

High sound pressure level of up to 30W input ensures excellent sound reproduction in high-ceiling and wall-mount applications.



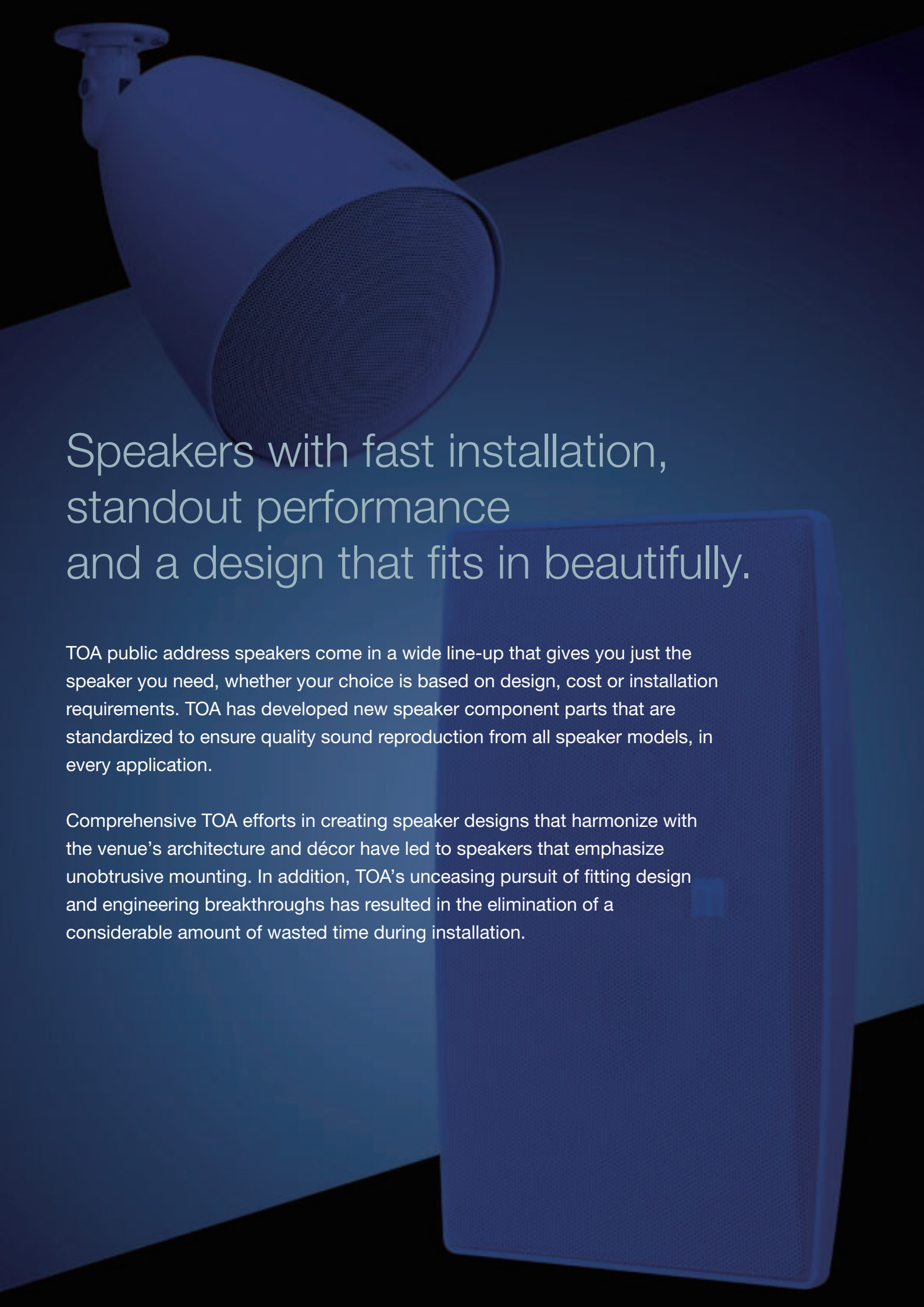
PJ-64/304 Projection Speaker

Supplied brackets ensure flexible speaker direction changes.



PE-64/304 Pendant Speaker

Sturdy cable, extendable up to 5 meters, enables speaker mounting even from a high ceiling.

The background of the entire page features two TOA public address speakers. In the upper left, a white, dome-shaped speaker is mounted on a wall. In the lower right, a larger, rectangular, white speaker is shown. The background is a dark blue gradient with geometric shapes.

Speakers with fast installation, standout performance and a design that fits in beautifully.

TOA public address speakers come in a wide line-up that gives you just the speaker you need, whether your choice is based on design, cost or installation requirements. TOA has developed new speaker component parts that are standardized to ensure quality sound reproduction from all speaker models, in every application.

Comprehensive TOA efforts in creating speaker designs that harmonize with the venue's architecture and décor have led to speakers that emphasize unobtrusive mounting. In addition, TOA's unceasing pursuit of fitting design and engineering breakthroughs has resulted in the elimination of a considerable amount of wasted time during installation.

Uncomplicated and easy-to-use fittings cut installation time to half that of conventional models.

Simple and easy installation, thanks to TOA's new proprietary SUS spring-based installation method.

All speakers employ the same simple and easy installation method, unaffected by their diameter size.

Greater variety of ceiling flush-mount speaker diameters and functions, for application flexibility that suits every situation.

Finely crafted design with thin panel that does not detract from venue architecture or interior decor.



Ceiling Mount Speakers

Specifications	PC-2869	PC-2852
Speaker Component	8"(20cm) double cone-type	8"(20cm) Coaxial 2-way cone-type
Rated Input	100V LINE: 6W, 70V LINE: 3W	100V LINE: 15W, 70V LINE: 15W
Impedance	100V LINE: 1.7 k Ω (6W), 3.3 k Ω (3W), 6.7 k Ω (1.5W), 13 k Ω (0.8W) 70V LINE: 1.7 k Ω (3W), 3.3k Ω (1.5W), 6.7 k Ω (0.8W), 13 k Ω (0.4W)	100V LINE: 670 Ω (15W), 1k Ω (10W), 2k Ω (5W), 3.3k Ω (3W) 70V LINE: 330 Ω (15W), 670 Ω (7.5W), 1k Ω (5W), 2k Ω (2.5W), 3.3k Ω (1.5W)
Sound Pressure Level (1m/1W)	94 dB	96 dB
Frequency Response	40 – 20,000 Hz	45 – 20,000 Hz
Input Terminal	Push-in terminal	
Finish	Baffle: Steel plate, off-white, paint/Grille: Surface-treated steel plate net, off-white, paint	
Dimensions	$\phi 280 \times 92(D)$ mm ($\phi 11.02" \times 3.62"$)	

Choice of horizontal or vertical installation for a more exact match with the venue.

Innovative BS-634/634T/1034/1034S and BS-680F/FC design is based on the Golden Ratio (1: 1.618), a proportion widely used in Western architecture that is especially pleasing to the eye.

Surface stains easily removable from metal punching net.



BS-1034S

BS-634 /634T/1034

Unparalleled ease and simplicity of installation, with simultaneous wiring and mounting capability, then just putting in the speaker unit.

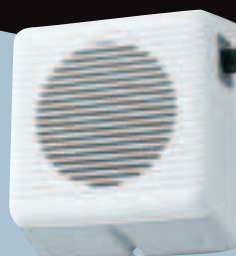
BS-680F/680FC

Strong, all-metal body construction makes this an ideal speaker for emergency broadcasting applications.



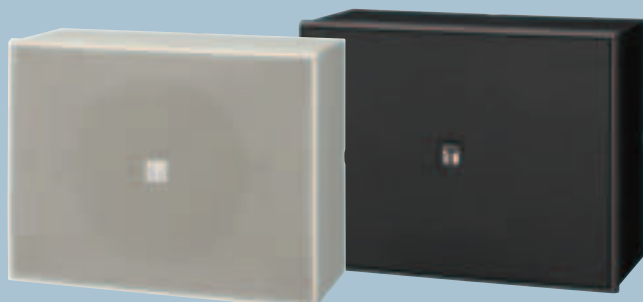
BS-633A/633AT

Six watts of output power is double that of 3W conventional speakers. Excellent cost-performance ratio.



BS-678/678T/678B/678BT

Suitable for a wide range of applications, and with an excellent cost-performance ratio. Quick and easy installation.



Wall Mount Speakers

Specifications	BS-633A		BS-633AT		BS-634	BS-634T	BS-1034		BS-1034S		
Speaker Component	5" (12cm) cone-type				5"(12cm) cone-type			5"(12cm) cone-type + balanced dome tweeter			
Rated Input	100V LINE: 6W, 70V LINE: 3W				100V LINE: 6W, 70V LINE: 3W			100V LINE: 10W, 70V LINE: 10W			
Impedance	100V LINE: 1.7 kΩ (6W),3.3 kΩ (3W),10 kΩ (1W) 70V LINE: 1.7 kΩ (3W),3.3 kΩ (1.5W), 10 kΩ (0.5W)		100V LINE: 1.7 kΩ (6W),3.3 kΩ (3W) 70V LINE: 1.7 kΩ (3W),3.3 kΩ (1.5W)		100V LINE: 1.7 kΩ (6W),3.3 kΩ (3W) 70V LINE: 1.7 kΩ (3W),3.3 kΩ (1.5W)	100V LINE: 1.7 kΩ (6W) 70V LINE: 1.7 kΩ (3W)		100V LINE: 1kΩ (10W), 2kΩ (5W), 3.3kΩ (3W),10kΩ (1W) 70V LINE: 500Ω (10W),1kΩ (5W), 2kΩ (2.5W),3.3kΩ (1.5W), 10kΩ (0.5W)			
Sound Pressure Level (1m/1W)	91 dB				90 dB						
Frequency Response	120 – 15,000Hz				120 – 18,000Hz			120 – 20,000Hz			
Input Terminal	Push-in terminal				M4 screw terminal						
Attenuation	-		3W: OFF, 1(-12dB), 2(-6dB), 3(0dB) 6W: OFF, 1(-13dB), 2(-7dB), 3(0dB)		-	OFF, 1(-12dB), 2(-6dB), 3(0dB)			-		
Finish	Case: ABS resin, Off-white Rear board; Hard board				Enclosure: HIPS resin, off-white Grille: Surface-treated steel plate net, off-white, paint			Enclosure: HIPS resin, off-white Grille: Steel plate net, off-white, paint		Enclosure: HIPS resin, silver, paint Grille: Steel plate net, silver, paint	
Dimensions	173(W) × 195(H) × 101(D)mm (6.81"× 7.68" × 3.98")				208(W) × 327(H) × 79(D)mm (8.19" × 12.87" × 3.11")						

Specifications	BS-678		BS-678T	BS-678B	BS-678BT	BS-680F		BS-680FC	
Speaker Component	6"(16cm) double cone-type					6"(16cm) double cone-type			
Rated Input	100V LINE: 6W, 70V LINE: 3W					100V LINE: 6W, 70V LINE: 3W			
Impedance	100V LINE: 1.7 kΩ (6W), 3.3kΩ (3W), 6.7 kΩ (1.5W), 13kΩ (0.8W) 70V LINE: 1.7 kΩ (3W), 3.3 kΩ (1.5W), 6.7 kΩ (0.8W), 13 kΩ (0.4W)					100V LINE: 1.7 kΩ (6W), 3.3 kΩ (3W), 6.7 kΩ (1.5W), 13 kΩ (0.8W) 70V LINE: 1.7 kΩ (3W), 3.3 kΩ (1.5W), 6.7 kΩ (0.8W), 13 kΩ (0.4W)			
Sound Pressure Level (1m/1W)	94 dB								
Frequency Response	150 – 20,000 Hz								
Input Terminal	Push-in terminal							Screw connector (ceramic terminal)	
Attenuation	-	OFF, 1 (-12dB), 2 (-6dB), 3 (0dB)	-	OFF, 1(-12dB), 2(-6dB), 3(0dB)	-				
Finish	Baffle: HIPS resin, off-white Cabinet: Wood, off-white Grille: Surface-treated steel plate net, off-white		Baffle: HIPS resin, black Cabinet: Wood, black Grille: Surface-treated steel plate net, black			Baffle: Steel plate, off-white Cabinet: Steel plate, off-white Grille: Surface-treated steel plate net, off-white			
Dimensions	250(W) × 190(H) × 110(D)mm (9.84" × 7.48" × 4.33")					310(W) × 190(H) × 87.2(D)mm (12.20" × 7.48" × 3.43")			

Pendant Speakers

Specifications	PE-64	PE-304	PJ-64	PJ-304
Speaker Component	5" (12cm) cone-type	5" (12cm) cone-type + balanced dome tweeter	5" (12cm) cone-type	5" (12cm) cone-type + balanced dome tweeter
Rated Input	100V LINE: 6W, 70V LINE: 3W	100V LINE: 30W, 70V LINE: 30W LOW IMP.: 8Ω	100V LINE: 6W, 70V LINE: 3W	100V LINE: 30W, 70V LINE: 30W LOW IMP.: 8Ω
Impedance	100V LINE: 1.7kΩ (6W), 3.3kΩ (3W), 10 kΩ (1W) 70V LINE: 1.7kΩ (3W), 3.3kΩ (1.5W), 10 kΩ (0.5W)	100V LINE: 330Ω (30W), 500Ω (20W), 670Ω (15W), 1kΩ (10W), 2kΩ (5W) 70V LINE: 170Ω (30W), 250Ω (20W), 330Ω (15W), 500Ω (10W), 1 kΩ (5W) LOW IMP: 8Ω (30W)	100V LINE: 1.7kΩ (6W), 3.3kΩ (3W), 10 kΩ (1W) 70V LINE: 1.7kΩ (3W), 3.3kΩ (1.5W), 10 kΩ (0.5W)	100V LINE: 330Ω (30W), 500Ω (20W), 670Ω (15W), 1kΩ (10W), 2kΩ (5W) 70V LINE: 170Ω (30W), 250Ω (20W), 330Ω (15W), 500Ω (10W), 1 kΩ (5W) LOW IMP: 8Ω (30W)
Sound Pressure Level (1m/1W)	90 dB	91 dB	90 dB	91 dB
Frequency Response	100 – 18,000 Hz	70 – 20,000 Hz	100 – 18,000 Hz	70 – 20,000 Hz
Input Terminal	Push-in terminal		-	
Finish	Enclosure: HIPS resin, off-white Grille: Surface-treated steel plate net, off-white, paint		Enclosure: HIPS resin, off-white Grille: Surface-treated steel plate net, off-white, paint	
Dimensions	ø186 × 251(H) mm (ø7.32" × 9.88") (unit only)		ø186 × 369(H) mm (ø7.32" × 14.33")	

Projection Speakers