

READ AND SAVE THESE INSTRUCTIONS



one:one™

Java-Pod™ Coffee Maker

USE AND CARE GUIDE FOR  
MODEL MES1B, MES1W,  
MES1R



# IMPORTANT SAFEGUARDS

When using electrical appliances, basic safety precautions should always be followed, including the following:

- Read all instructions.
- Do not touch hot surfaces. Use handles or knobs.
- To protect against fire, electric shock, do not place cord, plugs, or appliance in water or other liquid.
- Close supervision is necessary when any appliance is used by or near children.
- Unplug from outlet when not in use and before cleaning. Allow to cool before putting on or taking off parts, and before cleaning the appliance.
- Do not operate any appliance with a damaged cord or plug or after the appliance malfunctions, or has been damaged in any manner. Contact Consumer Service for examination, repair or adjustment.
- The use of accessory attachments not recommended by the appliance manufacturer may result in fire, electric shock or injury to persons.
- Do not use outdoors.
- Do not let cord hang over edge of table or counter, or touch hot surfaces.
- Do not place on or near a hot gas or electric burner, or in a heated oven.
- To disconnect, turn any control to “off,” then remove plug from wall outlet.
- Do not use appliance for other than intended use.
- Be certain lid is securely in place before operating appliance.
- Scalding may occur if the lid is opened during the brewing cycles.

## SAVE THESE INSTRUCTIONS

THIS PRODUCT IS FOR HOUSEHOLD USE ONLY.

# ADDITIONAL IMPORTANT SAFEGUARDS

**WARNING:** This appliance generates heat and escaping steam during use. Use proper precautions to prevent the risk of burns, fires, or other injury to persons or damage to property.

- All users of this appliance must read and understand this Owner's Manual before operating or cleaning this appliance.
- The cord to this appliance should be plugged into a 120V AC electrical outlet only.
- Use **water only** in this appliance! Do not put any other liquids or food products in this appliance. Do not mix or add anything to the water placed in this appliance, except as instructed in the User Maintenance Instructions to clean the appliance.
- DO NOT attempt to move an appliance containing hot liquids. Allow appliance to cool completely before moving.
- Keep appliance at least 4 inches away from walls or other objects during operation. Do not place any objects on top of appliance while it is operating. Place the appliance on a surface that is resistant to heat.
- If this appliance begins to malfunction during use, immediately unplug the cord. Do not use or attempt to repair the malfunctioning appliance.
- If this appliance falls or accidentally becomes immersed in water or any other liquid, unplug immediately. **Do not reach into the water! Do not use this appliance after it has fallen into or has become immersed in water.** Contact Consumer Service for examination and repair.
- Do not leave this appliance unattended during use.
- Always use fresh, cool water in your coffee maker. Warm water or other liquids, except as listed in cleaning section, may cause damage to the appliance.

**POLARIZED PLUG:** This appliance has a polarized plug, (one blade is wider than the other). To reduce the risk of electric shock, this plug is intended to fit into a polarized outlet only one way. If the plug does not fit fully in the outlet, reverse the plug. If it still does not fit, contact a qualified electrician. Do not attempt to modify the plug in any way.

**SHORT CORD INSTRUCTIONS:** A short power supply cord is provided to reduce the risk resulting from becoming entangled in or tripping over a longer cord.

Extension cords are available and may be used if care is exercised in their use.

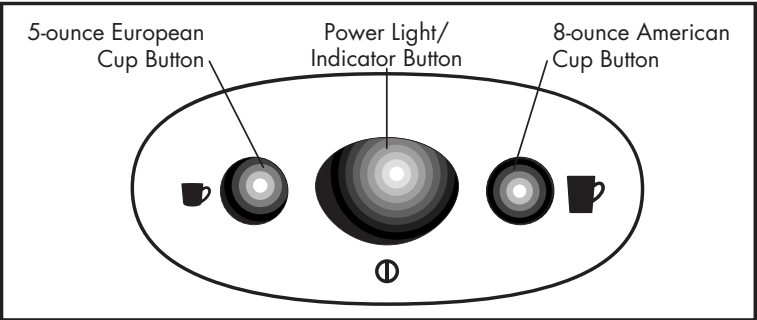
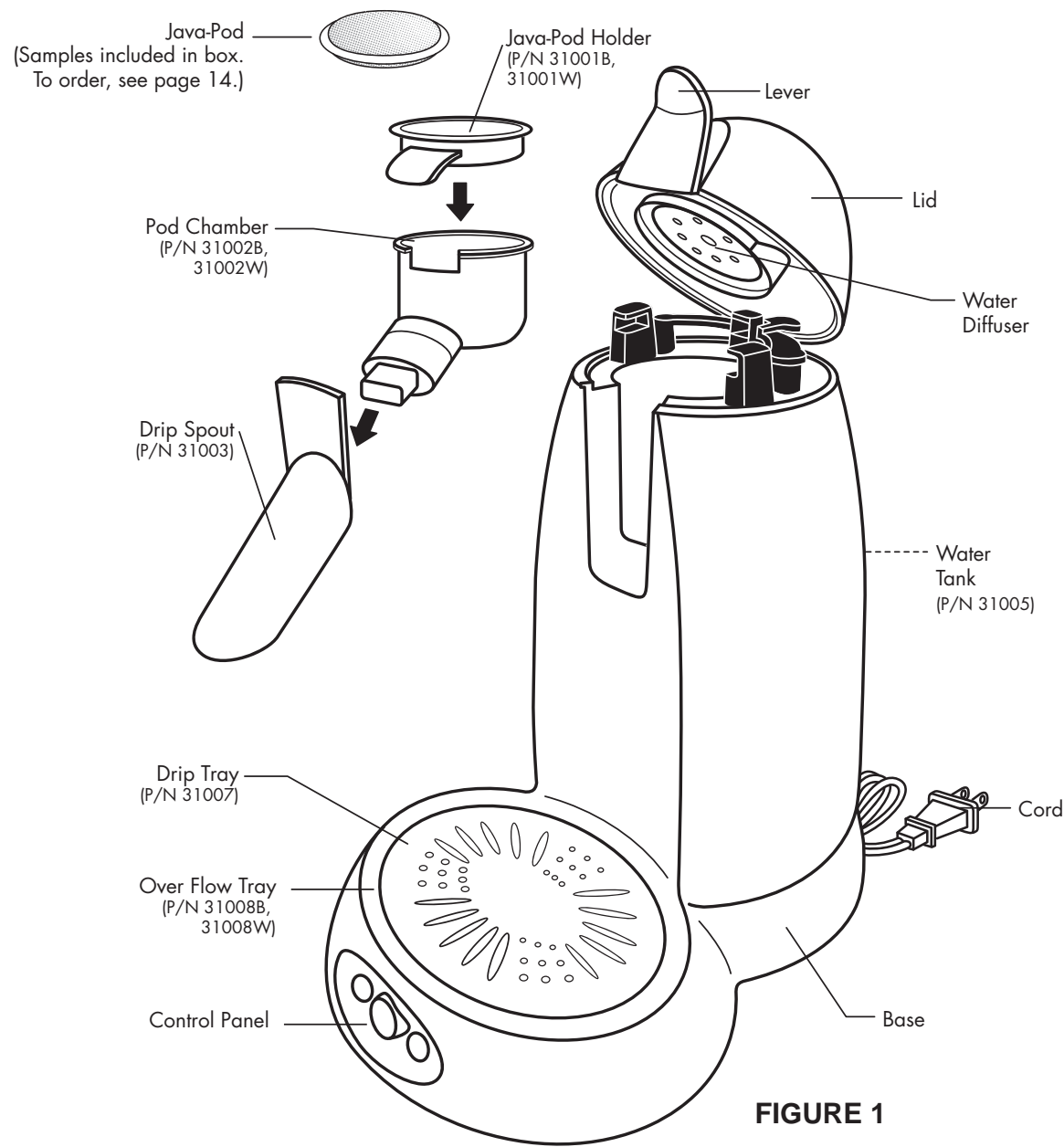
If an extension cord is used, (1) the marked electrical rating of the cord set or extension cord should be at least as great as the electrical rating of the appliance, and (2) the cord should be arranged so that it will not drape over the countertop or tabletop where it can be pulled on by children or tripped over unintentionally.

**ELECTRIC POWER:** If the electric circuit is overloaded with other appliances, your appliance may not operate properly. It should be operated on a separate electrical circuit from other appliances.

**WARNING:** TO REDUCE THE RISK OF FIRE OR ELECTRIC SHOCK, DO NOT REMOVE THE BOTTOM COVER. NO USER-SERVICEABLE PARTS INSIDE. REPAIR SHOULD BE DONE BY AUTHORIZED SERVICE PERSONNEL ONLY.

Your product may vary slightly from illustration.

# Parts Identification



# Before Using Your One:One™ Java-Pod™ Coffee Maker

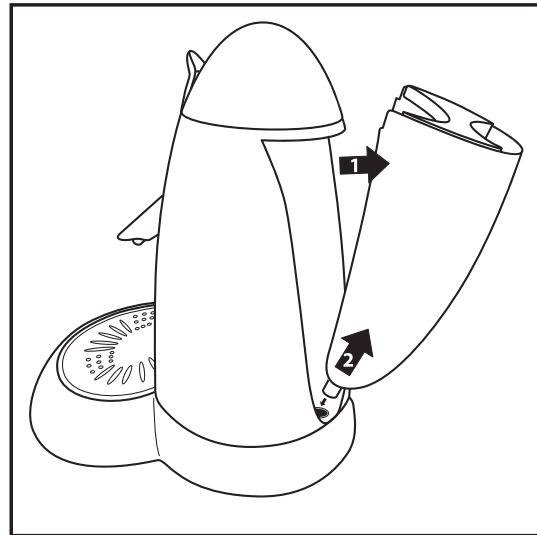
Become familiar with all parts of the appliance.

## **Keep your coffee maker clean**

Clean and descale coffee maker on a regular basis. See “Cleaning and Descaling”, pages 11-12. We recommend cleaning the Water Tank and the Drip Spout as well as the Java-Pod Holder, before using your coffee system for the first time. Turn on the coffee maker for a full cycle using water only.

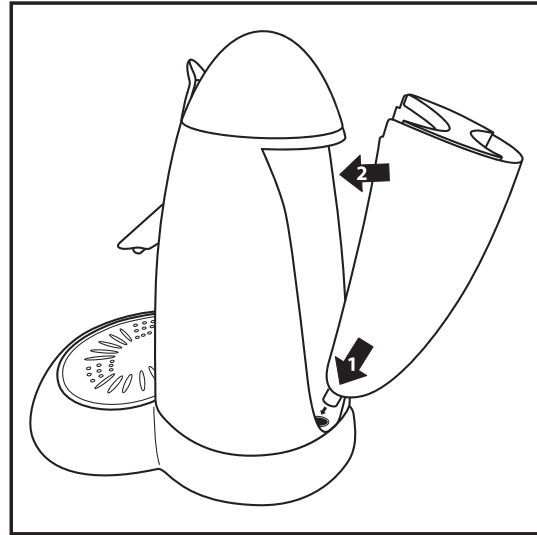
**IMPORTANT: THE COFFEE MAKER WILL NOT FILTER COFFEE UNLESS IT HAS COMPLETED A FULL CYCLE USING WATER ONLY.**

1. Remove the Water Tank by pulling out and then up to remove from the Base, see Figure 3.



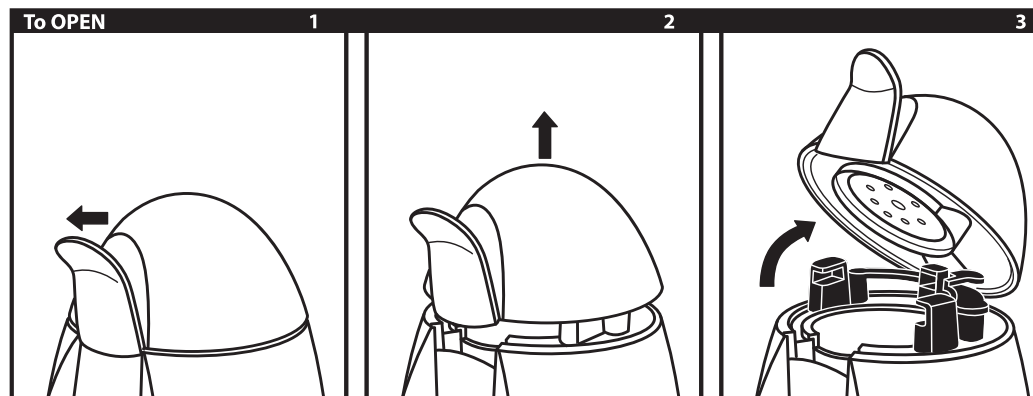
**FIGURE 3**

2. Fill the Water Tank with fresh water up to the 'Max' line, and fit back into the Base (down and in) until it "snaps" into place, see Figure 4.



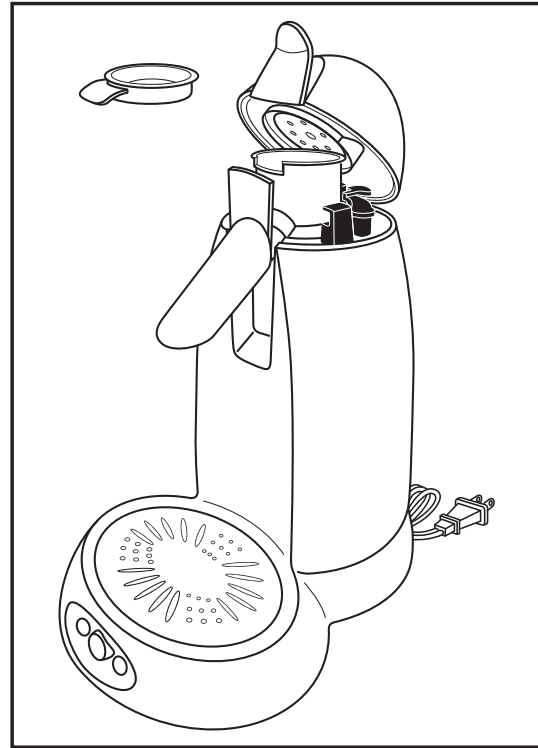
**FIGURE 4**

3. Lift Lid by pulling out on the Lever. Top will pop up. Push back so Lid is in fully raised position, see Figure 5.



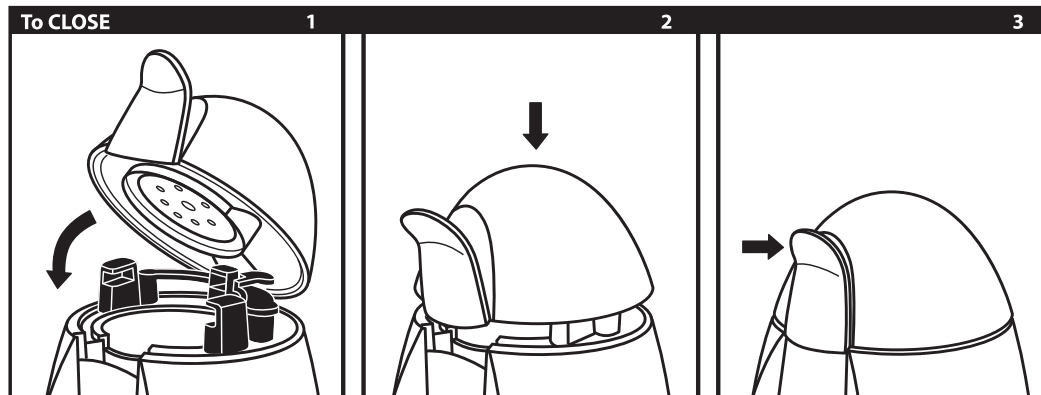
**FIGURE 5**

4. Place the empty Java-Pod Holder inside the coffee maker, see Figure 6.



**FIGURE 6**

5. To close the Lid, press down firmly on the top of the Lid and hold in place while pushing the Lever back so it is flush with the Lid and locks into place, see Figure 7.



**FIGURE 7**

6. Place a large measuring cup or bowl (must hold at least 27 ounces) below the coffee Drip Spout to collect the water.



7. Press the Power Light/Indicator Button to turn power on, then simultaneously press the 5-Ounce Cup and 8-Ounce Cup Buttons, see Figure 8.

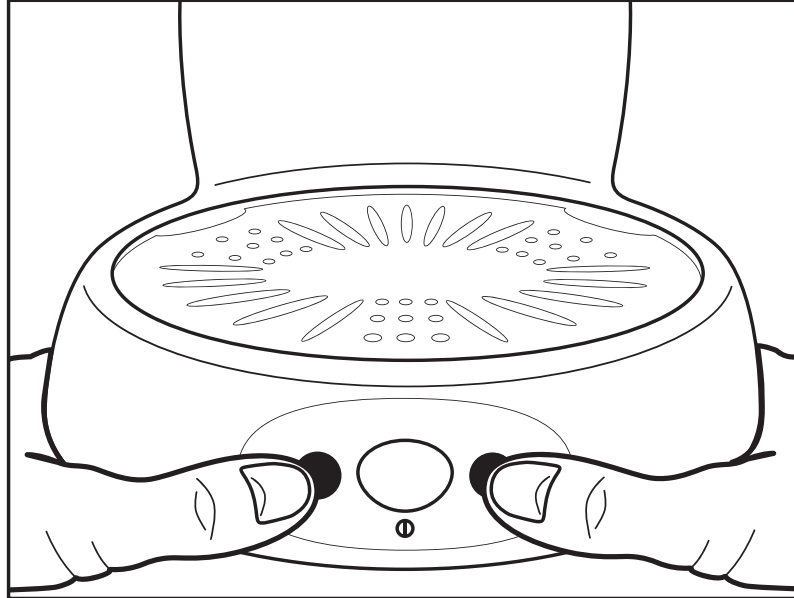


FIGURE 8

The water from the Water Tank will cycle through the coffee maker.

**Note:** If Water Tank becomes dry for 3 or more days, please repeat above process (steps 1-7).

**CAUTION:** Do not immerse cord, plug or coffee maker in water or other liquid.

## Brewing

**CAUTION:** Before Brewing in your coffee maker for the first time, complete the steps listed under “Before Using Your One:One™ Java-Pod™ Coffee Maker” on pages 6-8 to ensure your coffee maker functions properly.

1. Fill the Water Tank with water up to the ‘MAX’ line. Never pour other liquids such as milk or hot water into the Water Tank. A full tank will produce up to 28-ounces of coffee (three mugs).
2. Press the Power Light/Indicator Button. The indicator light will flash while the water heats up. Heating will take approximately 1½ minutes.
3. To open the Lid, place one finger behind Lever and pull out. Gently raise Lid to open position.

4. Place one Melitta® java-pod™ inside the Java-Pod Holder. Press lightly on the java-pod™ to make sure it sits evenly in the Java-Pod Holder.

**CAUTION:** Use only specially designed Melitta® java-pods™ in your One:One™ Java-Pod™ Coffee Maker. The use of loose ground coffee or pods not designed for this coffee maker may result in poor coffee or cause damage to the coffee maker.

**CAUTION:** Never use torn java-pods™ as this could clog the machine and damage it. Each java-pod™ is pre-portioned with the optimal amount of ground coffee required per cup.

5. To close the Lid, press down firmly on the top of the Lid and hold in place while pushing the Lever back so it is flush with the Lid and locks into place.
6. Place a mug or cup under the Drip Spout. The cup should hold at least 7 or 10 ounces, depending on your selection.
7. Press the Power Light/Indicator Button. The indicator light will flash slowly while the water is heating up. When the indicator light stops flashing, the appliance is ready to use. If the indicator light flashes at rapid intervals, check the following:
  - the Water Tank must be placed firmly inside the coffee maker.
  - make sure there is enough water inside the Water Tank. The Water Tank must be filled to the 'MAX' line.
8. Select the amount of coffee you wish to brew: either 5 ounces of robust European-style coffee or 8 ounces of "Americano" coffee. The coffee maker will begin the brewing process. At the beginning of the brewing cycle, the coffee maker disperses a small amount of water to saturate the pod to ensure full extraction. Following a pause, the coffee maker will brew for about 50 seconds. You can manually stop the brewing process at any time by pressing the Power Button.
9. Dispose of the java-pod™ after use by removing the Java-Pod Holder from the appliance and emptying it. Do not use a java-pod™ more than once. Repeated use may cause the pod to burst and result in weak and inferior coffee.

**Note:** Regular rinsing of the Java-Pod Holder will improve coffee flavor.

You may leave your coffee maker on if you intend to brew another cup of coffee. The appliance will turn itself off automatically after one hour.

# Helpful Hints for Brewing

## Fresh Water

Use fresh water daily. If you haven't used your coffee maker for a few days, rinse the Water Tank, fill it with fresh water and turn on the appliance for a full cycle, with water only before using a java-pod™ again.

**Note:** If Water Tank becomes dry for 3 or more days, see section “Before Using Your One:One™ Java-Pod™ Coffee Maker,” steps 1-7.

## Java-pods™

Remove the java-pods™ after use. If you happen to have left a java-pod™ inside the coffee maker for some time without having used the coffee system, remove it and turn on the appliance for a full cycle, using water only, before attempting to brew coffee. See “Before Using Your One:One® Java-Pod™ Coffee Maker,” page 6.

# Care and Cleaning

**CAUTION:** Do not immerse cord, plug or coffee maker in water or other liquid. Never immerse the appliance in water.

1. Always unplug the appliance before cleaning.
2. Clean the outer surface of your coffee maker and the Water Diffuser with a damp cloth.
3. Remove and disassemble the Pod Holder, Pod Chamber and Drip Spout. To remove Drip Spout, press Lever on the back side of the Drip Spout, see Figure 9.

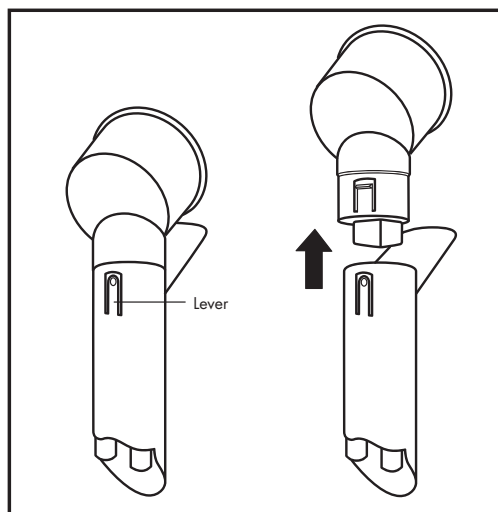


FIGURE 9

4. Remove the Drip Tray and Overflow Tray, see Figure 10.

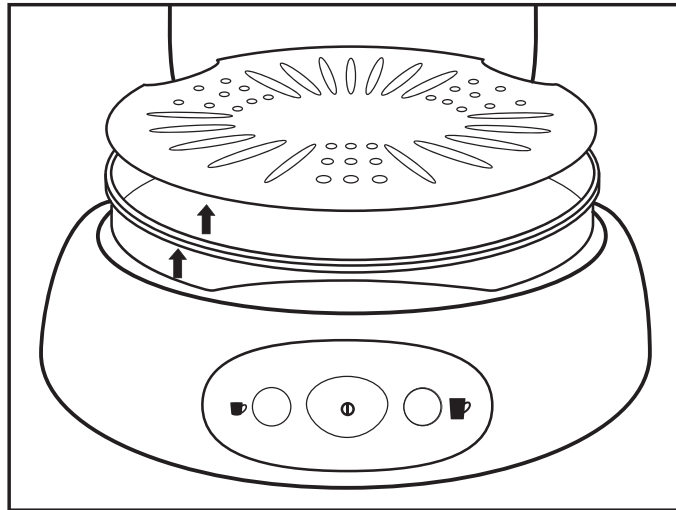


FIGURE 10

5. Clean the Java-Pod Holder, Pod Chamber, Drip Spout, Drip Tray and Overflow Tray with hot water. If necessary, use a little dish soap or wash them in the dishwasher (top shelf only).  
**Note:** The Java-Pod Holder, the Drip Tray, Overflow Tray and the coffee Drip Spout may be washed in the dishwasher. Clean the Water Tank with hot water. Use soapy water if necessary. The top part of the tank can be removed for thorough cleaning. Do not place the Water Tank in the dishwasher.
6. Rinse all parts with fresh water after cleaning and before re-assembling.

## Descaling

Regular descaling will extend the service life of your coffee maker and ensure optimal results over time.

1. Follow the instructions given in “Before Using Your One:One™ Java-Pod™ Coffee Maker”, pages 6-9, replacing one fourth of the water with white vinegar.
2. Brew 3, 8oz. cups **with no Melitta® java-pod™ placed inside the Java-Pod Holder** by following the Brewing Instructions on page 9.
3. Remove Water Tank, Java-Pod Holder, Pod Chamber and Drip Spout and wash thoroughly.
4. Repeat instructions in step 2 up to four times in order to flush vinegar residue. Empty Water Tank and refill with fresh water after each cycle.  
**Note:** You May also use a cleaner designed for automatic drip coffee makers. Simply follow the instructions given on the package.

# Troubleshooting

Should a problem occur, you may be able to find an answer in the text below. If the text proves unhelpful or if you require further information, please contact Consumer Service.

## 1. The coffee is too weak.

Check the following:

- the java-pod™ is placed properly in the Java-Pod Holder. You may need to lightly press it down into the holder.
- you have selected the correct button according to the number of ounces and strength desired. Use one java-pod™ for either one 5-ounce, robust European cup, or an 8-ounce serving of “Americano.”
- you are using a fresh Melitta® java-pod™.

## 2. The coffee is too strong.

Check that you have selected the correct button. Use the 8-ounce button for less robust coffee.

## 3. There is less water than usual dripping from the appliance into the cups.

Descale appliance. See “Descaling,” page 12.

## 4. Water drips from the appliance.

Check the following:

- the Java-Pod Holder must be placed properly within the Pod Chamber and the Lever locked into position.
- the Water Tank must not be filled above the ‘MAX’ line.
- the Java-Pod Holder may be clogged. Rinse under tap water to unclog the screen. If necessary, you may also use a scrubbing brush or a pin.
- the java-pod™ must be properly placed so it sits evenly into the holder. Lightly tap it down into the holder.
- some water droplets on your countertop are normal and may be caused by the filling and replacing of the Water Tank.

## 5. The indicator light is flashing.

A flashing indicator light means the machine is heating. This normally lasts for 1-1½ to 2 minutes. If indicator light is flashing rapidly (more than a second apart), see #6 below.

If the indicator light flashes continually for more than 4 minutes, contact Consumer Service.

**6. The indicator light keeps flashing at rapid intervals.**

Check the following:

- the Water Tank must be inserted properly inside the appliance.
- there must be enough water in the Water Tank. Fill the Water Tank to the “Max” fill line.
- the coffee maker may require cleaning. See “Before Using Your One:One™ Java-Pod™ Coffee Maker”, pages 6-8.
- room temperature must be above 40°F.

**7. The Lid cannot be opened.**

Turn coffee maker off. Unplug unit. Wait for unit to cool completely (about 30 minutes) and try opening Lid again. Clean all removable parts (Drip Spout, Java-Pod Holder, Pod Chamber) as described on pages 11-12.

For any other problem please contact Consumer Service, 1-800-841-1628 or email us at [Salton@Saltonusa.com](mailto:Salton@Saltonusa.com).

## To Order Melitta Java-pods

It's easy to order Java-pods™. Just log onto our dedicated website, [1to1coffee.com](http://1to1coffee.com), and order online.

To order by phone, call toll-free, 1-800-841-1628.

To ensure a steady supply of fresh coffee pods and to take advantage of special promotions, join our One:One Continuity Club (see registration materials included with this product).

Melitta Java-pods are also available at many retail outlets that carry the Melitta® One:One® Java-Pod™ Coffee Maker.

## IMPORTANT NOTICE

*If any parts are missing or defective,  
**DO NOT** return this product.*

*Please call our Customer Service Department for assistance.*

**800-841-1628** Monday - Friday 9:00 am - 5:00 pm CST

*Thank You*

### LIMITED ONE YEAR WARRANTY

**Warranty:** This Melitta® product is warranted by Salton, Inc. to be free from defects in materials or workmanship for a period of (1) year from the original purchase date. This product warranty covers only the original consumer purchaser of the product.

**Warranty Coverage:** This warranty is void if the product has been damaged by accident in shipment, unreasonable use, misuse, neglect, improper service, commercial use, repairs by unauthorized personnel, normal wear and tear, improper assembly, installation or maintenance abuse or other causes not arising out of defects in materials or workmanship. This warranty is effective only if the product is purchased and operated in the USA, and does not extend to any unit which has been used in violation of written instructions furnished with the product, or to units which have been altered or modified, or to damage to products or parts thereof which have had the serial number removed, altered, defaced or rendered illegible.

**Implied Warranties:** ANY IMPLIED WARRANTIES WHICH THE PURCHASER MAY HAVE ARE LIMITED IN DURATION TO ONE (1) YEAR FROM THE DATE OF PURCHASE. Some states do not allow limitations on how long an implied warranty lasts, so the above limitation may not apply to you.

**Warranty Performance:** During the above one-year warranty period, a product with a defect will be either repaired or replaced with a reconditioned comparable model (at our option) when the product is returned to the Repair Center, or the purchase price refunded. The repaired or replacement product will be in warranty for the balance of the one-year warranty period and an additional one-month period. No charge will be made for such repair or replacement.

**Service and Repair:** Should the appliance malfunction, you should first call toll-free 1-800-841-1628 between the hours of 9:00 am and 5:00 pm Central Standard Time and ask for CONSUMER SERVICE stating that you are a consumer with a problem. Please refer to model number MES1B when you call.

**In-Warranty Service (USA):** For an appliance covered under the warranty period, no charge is made for service or postage. Call for return authorization 1-800-841-1628.



**Out-of-Warranty Service:** A flat rate charge by model is made for out-of-warranty service. Include \$12.00 (U.S.) for return shipping and handling. We will notify you by mail of the amount of the charge for service and require you to pay in advance for the repair or replacement.

**For products purchased in the USA, but used in Canada:** You may return the product insured, packaged with sufficient protection, and postage and insurance prepaid to the USA address listed below. Please note that all customs duty / brokerage fees, if any, must be paid by you and we will require you to pay the cost of customs duty / brokerage fees to us in advance of our performing any service.

**Risk During Shipment:** We cannot assume responsibility for loss or damage during incoming shipment. For your protection, carefully package the product for shipment and insure it with the carrier. Be sure to enclose the following items with your appliance: any accessories related to your problem, your full return address and daytime phone number, a note describing the problem you experienced, a copy of your sales receipt or other proof of purchase to determine warranty status. C.O.D. shipments cannot be accepted.

To return appliance, ship to:

Attn: Repair Center  
Salton, Inc.  
708 South Missouri Street  
Macon, MO 63552

To contact us, please write to, call or email:

Salton, Inc.  
P.O. Box 6916  
Columbia, MO 65205-6916  
1-800-841-1628  
Email: Salton@Saltonusa.com

**Limitation of Remedies:** No representative or person is authorized to assume for Salton, Inc. any other liability in connection with the sale of our products. There shall be no claims for defects or failure of performance or product failure under any theory of tort, contract or commercial law including, but not limited to negligence, gross negligence, strict liability, breach of warranty and breach of contract. Repair, replacement or refund shall be the sole remedy of the purchaser under this warranty, and in no event shall Salton, Inc. be liable for any incidental or consequential damages, losses or expenses. Some states do not allow the exclusion or limitation of incidental or consequential damages, so the above limitation or exclusion may not apply to you.

**Legal Rights:** This warranty gives you specific legal rights, and you may also have other rights which vary from state to state.

For more information on Salton products:  
Visit our website: [www.eSalton.com](http://www.eSalton.com)

© 2003 Salton, Inc.  
All Rights Reserved

P/N 61252  
Printed in China