

# DRY WALL SANDER

## INSTRUCTION MANUAL



RED THROUGH CAREFULLY AND UNDERSTAND THIS INSTRUCTION BEFORE USE



"Caution - Read the operating instructions to reduce the risk of injury"



**Wear ear-muffs.**

The impact of noise can cause damage to hearing.



**Wear a breathing mask.**

Dust which is injurious to health can be generated when working on wood and other materials. Never use the device to work on any materials containing asbestos!



**Wear safety goggles.**

Sparks generated during working or splinters, chips and dust emitted by the device can cause loss of sight.

## 1. Work area

*Keep work area clean and well lit. Do not operate power tools in explosive atmospheres, such as in the presence of flammable liquids, gases or dust. Power tools create sparks which may ignite the dust or fumes. Keep children and bystanders away while operating a power tool. Distractions can cause you to lose control. Safety Warnings Specific for Sanding Operations: Do not use excessively over sized sanding disc paper. Follow manufacturers recommendations, when selecting sanding paper. Larger sanding paper extending beyond the sanding pad presents a laceration hazard and may cause snagging, tearing of*

### 1.1: Electrical safety

Power tool plugs must match the outlet. Never modify the plug in any way. Do not use any adapter plugs with earthed (grounded) power tools. *Unmodified plugs and matching outlets will reduce risk of electric shock.* Avoid body contact with earthed or grounded surfaces such as pipes, radiators, ranges and refrigerators. *There is an increased risk of electric shock if your body is earthed or grounded.* Do not expose power tools to rain or wet conditions. *Water entering a power tool will increase the risk of electric shock.* Do not abuse the cord. Never use the cord for carrying, pulling or unplugging the power tool. Keep cord away from heat, oil, sharp edges or moving parts. *Damaged or entangled cords increase the risk of electric shock.* When operating a power tool outdoors, use an extension cord suitable for outdoor use.

*Use of a cord suitable for outdoor use reduces the risk of electric shock. If operating a power tool in a damp location is unavoidable, use a residual current device (RCD) protected supply. Use of an RCD reduces the risk of electric shock.*

## **1.2: Personal safety**

Stay alert, watch what you are doing and use common sense when operating a power tool. Do not use a power tool while you are tired or under the influence of drugs, alcohol or medication. *A moment of inattention while operating power tools may result in serious personal injury.* Use safety equipment. Always wear eye protection. *Safety equipment such as dust mask, non-skid safety shoes, hard hat, or hearing protection used for appropriate conditions will reduce personal injuries.* Avoid accidental starting. Ensure the switch is in the off position before plugging in. *Carrying power tools with your finger on the switch or plugging in power tools that have the switch on invites accidents.* Remove any adjusting key or wrench before turning the power tool on. *A wrench or a key left attached to a rotating part of the power tool may result in personal injury.* Do not overreach. Keep proper footing and balance at all times. *This enables better control of the power tool in unexpected situations.* Dress properly. Do not wear loose clothing or jewellery. Keep your hair, clothing and gloves away from moving parts. *Loose clothes, jewellery or long hair can be caught in moving parts.* If devices are provided for the connection of dust extraction and collection facilities, ensure these are connected and properly used. *Use of these devices can reduce dust related hazards.*

## **1.3: Power tool use and care**

Use the correct power tool for your application. *The correct power tool will do the job better and safer at the rate for which it was designed.* Do not use the power tool if the switch does not turn it on and off. *Any power tool that cannot be controlled with the switch is dangerous and must be repaired.* Disconnect the plug from the power source before making any adjustments, changing accessories, or storing power tools. *Such preventive safety measures reduce the risk of starting the power tool accidentally.* Store idle power tools out of the reach of children and do not allow

persons unfamiliar with the power tool or these instructions to operate the power tool. *Power tools are dangerous in the hands of untrained users.* Maintain power tools. Check for misalignment or binding of moving parts, breakage of parts and any other condition that may affect the power tools operation. If damaged, have the power tool repaired before use. *Many accidents are caused by poorly maintained power tools.* Keep cutting tools sharp and clean. *Properly maintained cutting tools with sharp cutting edges are less likely to bind and are easier to control;* Use the power tool, accessories and tool bits etc., in accordance with these instructions and in the manner intended for the particular type of power tool, taking into account the working conditions and the work to be performed. *Use of the power tool for operations different from intended could result in a hazardous situation.*

## **2.Voltage**

Before connecting electric tool to the socket, make sure that the supply voltage be in accordance with rated voltage. If the former is greater than latter and the device is powered on by mistake, it may result in damage of devices and injuries of people. As for indefinite supply voltage of socket, never try to plug for use. Besides, the damage of devices may also occur if the supply voltage falls below rated voltage.

## **3.Device Application**

As one of our products, the device belongs to the hand-held electric tools. The device mainly caters for lime surface, including the interior wall, ceiling, exterior wall, corridor, etc. Remove the painting lime mud from the wall, and make the surface even or smooth. It may promote the wall grinding efficiency and quality by workers. With various conditions taken into consideration in the design, the device may run at high or low speed. In addition, you may adjust the connection structure at high and low locations respectively, in order to optimize the grinding efficiency and realize user-friendly and compact design.

## 4. Technical Specifications

Model:

FG-S225;FG-S225-1;FG-S225-2;FG-S225-3;

FG-S225A-1;FG-S225A-2;FG-S225A-3;FG-S225A-4;FG-S225A-5;FG-S225A-6;

FG-S225L-1;FG-S225L-2;FG-S225L-3 ;FG-S225L-4;FG-S225E;

FG-S180;FG-S180A;FG-S180B;

FG-S1200

FG-S225E

Rated Voltage:110-120/220-240V

Frequency:50/60HZ

Rated Power: 710/750/800/850/880/900/950/1000/1050/1150/

1200/1500/1800/2200/2500/3000W

No-load Speed:

800-1750min(FG-S225 Series)

1200-2500min(FG-S180 Series)

1400-3100min(FG-S1200 Series)

Sandpaper Dimensions:

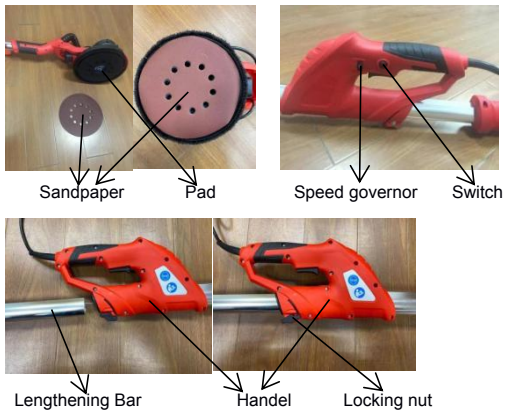
180mm(FG-S180 Series)

225mm(FG-S225/FG-S1200 series)

28mm(Triangle model)

Safety Standard: II / 

## 5. Structure Overview(FG-S225series)



Remove the sandpaper, put the Allen wrench into the hexagon hole in the center of the viscid disc and then rotate anticlockwise to take off the damaged viscid disc. Install the new viscid disc, or add gasket.



A corner when remove the disc edge cover, can make the sand plate close to the wall.



Folding joint contact



Suction regulating wheel

Suction adjustment guide: suction adjustment knob can adjust the suction. It is better to put the knob in the first place, and then adjust the suction according to the need. The direction of the large arrow large suction, and vice versa.



LED light switch

The spring using In multi-topping

With vacuum model



Without vacuum model



Extend the link between rod and hose



Connection between dust bag and hose (With vacuum model)



Carbon brush replacement position



Removal of head screws



The whole





### Structure Overview(Triangle & Circle)



Snap joint

Circle pad



Snap joint

Triangle Pad



This joint adjusts the rotation and closure of the triangular disc

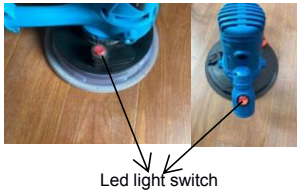
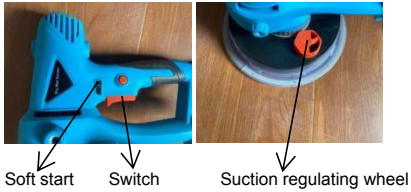


Triangle sander paper

### The whole



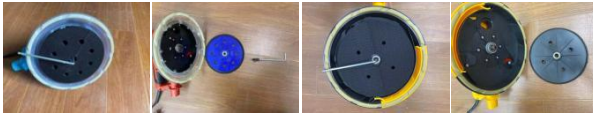
## Structure Overview(FG-S180series)



Carbon brush replace



Replace the pad



Add the gasket to adjust the pads highly



Sander paper



A corner when remove the disc edge cover, can make the sand plate close to the wall.



Connection between dust bag and hose (With vacuum model)



### Structure Overview(FG-S1200series)



Switch

speed control

### Carbon brush replace



### Connection between dust bag and hose (With vacuum model)

