

# FUSION CORE 22

## USER MANUAL

[www.sunslice-solar.com](http://www.sunslice-solar.com)

## Table of contents

INTRODUCTION	2
PRODUCT OVERVIEW	2
SPECIFICATIONS	3
KEY FEATURES	3
CHARGING IN THE SUN	3
INCREASE THE SUNSLICE EXPERIENCE	3
OUR WARRANTIES	4
PRECAUTIONS	4

[Click to go to the desired page](#)

## INTRODUCTION

Thank you for your purchase. We hope you will have a great experience using the Sunslice Fusion Core 22.

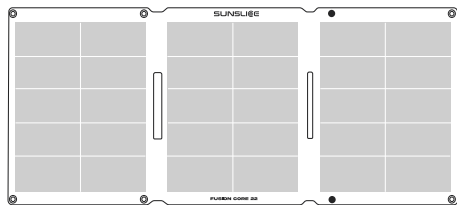
The Fusion Core 22 has been developed by Sunslice, a Belgian company created by two young engineers, with the ultimate goal to give people access to energy everywhere.

This solar charger, with an ideal solar charging speed for travellers, is extremely practical thanks to its compact, foldable and lightweight format. It will allow you to make the most of the sun.

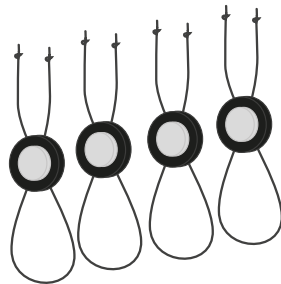
This manual contains important safety and product care information, as well as step-by-step instructions for using your Fusion Core 22. To get the greatest benefit from your purchase, we recommend you read the manual thoroughly, and keep it in a safe place in case you need to refer to it later.

*Geoffroy & Henri*

## IN THE BOX



Fusion Core 22

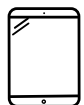


4 x Elastic Band

## COMPATIBLE WITH



SMARTPHONE



TABLET



GoPro



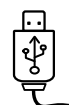
GPS



CAMERA

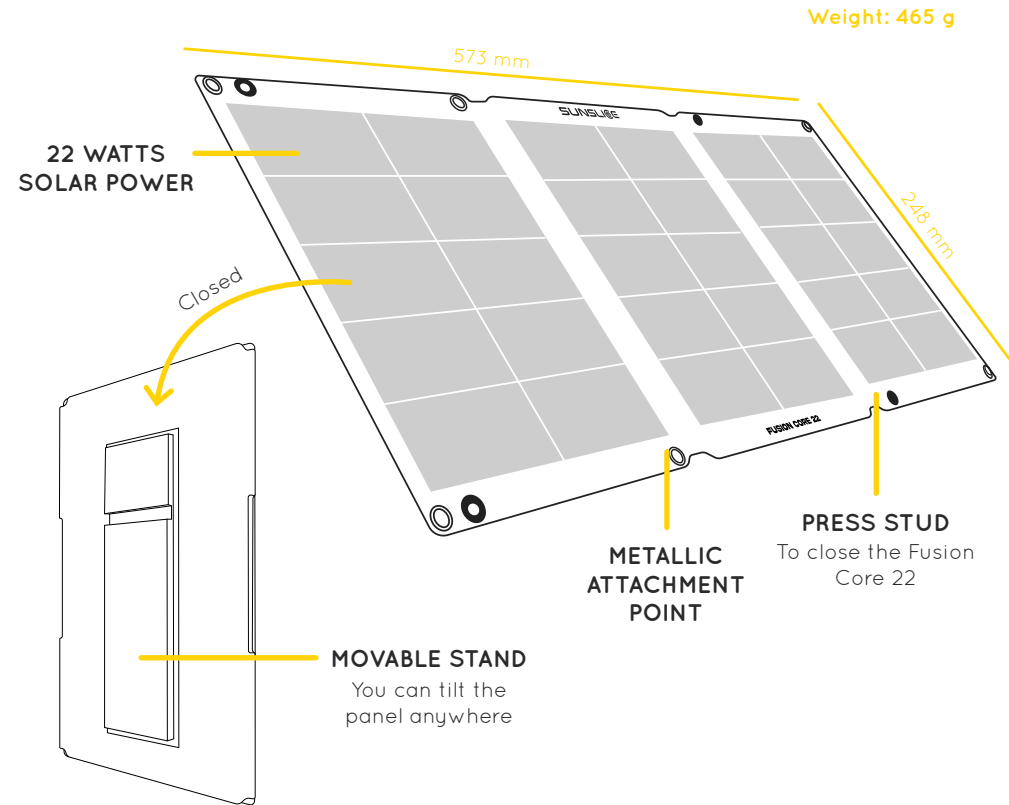


RADIO

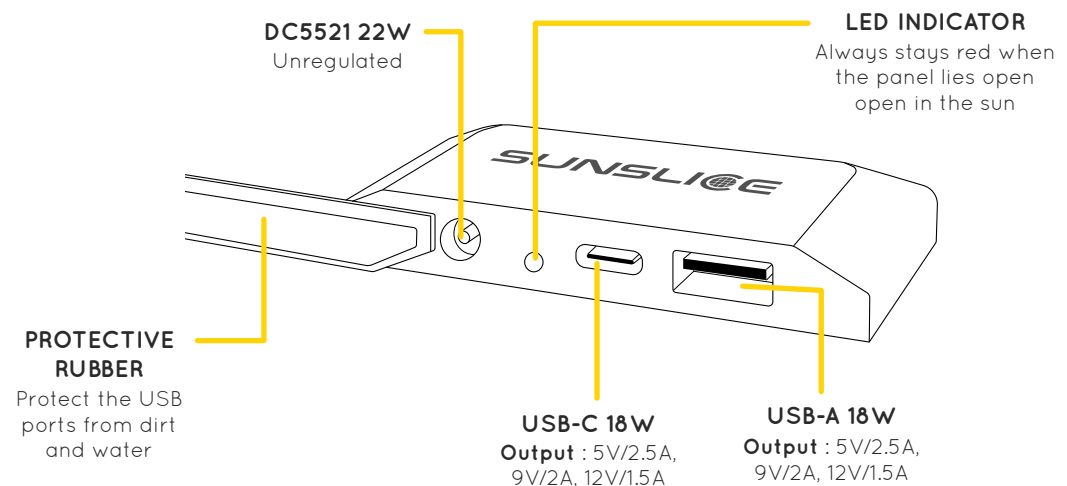


USB

## PRODUCT OVERVIEW



## USB INTERFACE / JUNCTION BOX



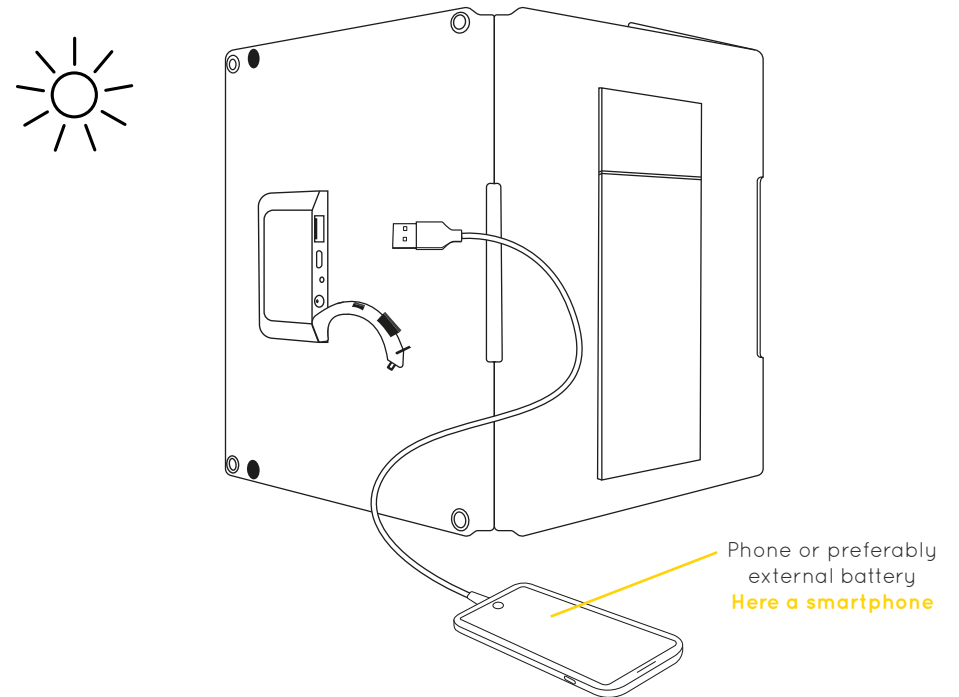
## SPECIFICATIONS

SOLAR POWER	22 WATTS
SOLAR TECHNOLOGY	Monocrystalline HPBC 24%
TOTAL OUTPUT 22 W MAX	<u>USB-A 18W</u> : 5V/2.5A, 9V/2A, 12V/1.5A <u>USB-C 18W</u> : 5V/2.5A, 9V/2A, 12V/1.5A <u>DC 5521</u> (Female) : 17V - 22W
WEIGHT	465 g
DIMENSIONS	<u>Open</u> : 573 x 248 x 2 mm <u>Closed</u> : 248 x 189 x 10 mm
CHARGING STATUS	LED Indicator
ATTACHMENT POINTS	6

## KEY FEATURES

- PORTABLE AND LIGHTWEIGHT (465 g)
- FOLDABLE AND COMPACT DESIGN
- INNOVATIVE AND ROBUST DESIGN
- HIGHLY RESISTANT SURFACE
- 22 WATTS SOLAR POWER
- 6 ATTACHMENT POINTS
- SCRATCH-RESISTANT
- SHOCK-RESISTANT
- WATER-RESISTANT

## CHARGING IN THE SUN



The Fusion Core charges with the energy of the sun. **Unfold the solar** charger and put it in the sun. Connect your device to the Fusion Core's back with a USB cable. The device will start charging immediately. The connected device should ideally be an external battery.

**Connecting your phone directly to the Fusion Core is also possible but may reduce its performance.**



## INCREASE THE SUNSLICE EXPERIENCE

- Incline the Fusion Core in the right direction to receive as much sunlight as possible. It is best to place the panels perpendicular to the sun in order to maximise its performance.

► Choose a well illuminated spot, don't shade any of the panels and try to expose them to the same light. Placing the panels behind a window reduces the solar performance.

► Placing and carrying the Fusion Core on a backpack is a practical way to charge it on the move. However, the Fusion Core charges best when it is left static and well exposed.

► Different phone models and devices (e.g. One Plus, iPhone, Huawei, etc.) react differently to charging depending on their electronic characteristics. Charging time and performance may thus vary accordingly.

## OUR WARRANTIES

### PREMIUM QUALITY

We select the finest materials to ensure a high quality and durability for all of our products.

### PROTECTION CIRCUIT

The Sunslice Fusion Core 22 is equipped with a voltage stabilising circuit to avoid damaging your devices.

### 2 YEARS WARRANTY

The Fusion Core 22 has a 2-year warranty. In case something goes wrong, please contact us directly by email at :  
**service@sunslice-solar.com**

Before contacting us, please have a look at our FAQ at :  
**[www.sunslice-solar.com/apps/help-center](http://www.sunslice-solar.com/apps/help-center)**

## PRECAUTIONS

- Do not puncture, throw, drop or modify your Sunslice Fusion Core 22.
- Do not bend the solar panels excessively.
- Do not leave the Fusion Core 22 out in the rain, keep away from water. Do not expose the Fusion Core to fire or excessive heat.
- Avoid charging your phone directly from the Fusion Core 22. Please first charge a powerbank with the Fusion Core 22 and then charge your phone with the powerbank.
- Keep the USB ports free from dust, lint, etc. that may prevent proper connections.
- Do not use excessive force when connecting USB cables to the USB ports.
- Do not disassemble the charger or change its structure in any way.
- Stop using the Fusion Core 22 if it generates unusual smell, overheating, distortion or any other abnormality.
- Keep away from children.

**You are welcome on our website to learn more  
about our products.**

**[www.sunslice-solar.com](http://www.sunslice-solar.com)**

Sunslice SRL  
Chemin du Cyclotron 6,  
1348 Louvain-la-Neuve, Belgique

