

80x80mm



Smart Life

Thank you for using smart camera

D

Basic Parameters

Product Name: Smart Camera
Pixel: 3.0MP/4.0MP/5.0MP/8.0MP
Video Compression: H.264 H.265 High Profile
Image Enhancement: Digital Wide Dynamic 3D Noise Reduction
Local Storage: MicroTF card
Wireless Encryption: WEP/WPA/WPA2 Encryption
AC : 100~240V
Total Power Consumption: 5W (Max)
WirelessStandard: 2.4G 802.11 b/g/n
Support Platform: Android/iOS

Component Description:

Reset Button: Long press "reset" hole 5sec, reset success.

It is recommended to insert 8-128GB high-speed Micro TF card, otherwise it will not be able to store, view historical video and support Important functions such as firmware upgrading.

Packing list: Smart Camera × 1, Manual × 1

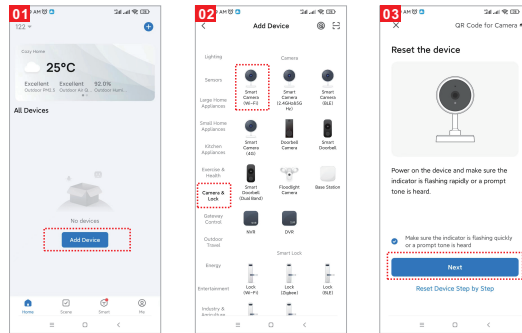
Install APP

Download APP: scan the QR code below to download and install.
Register and login: open the " Smart Life" APP to register and login according to the prompts.



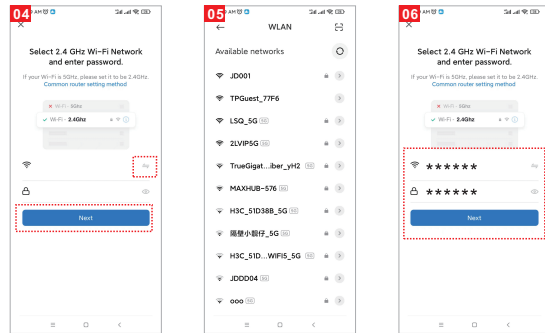
Add The Device-Scan QR code mode

- Make sure Wi-Fi is available and connected to the Internet.
- Connect the camera to the power, then system startup completed.
- Open "Smart Life" APP, press the '+' in the upper right corner of the main screen (Figure 01); choose "Security & Video Surveillance", click "Smart Camera" (Figure 02) to add camera; and then click "Next step" (Figure 03);

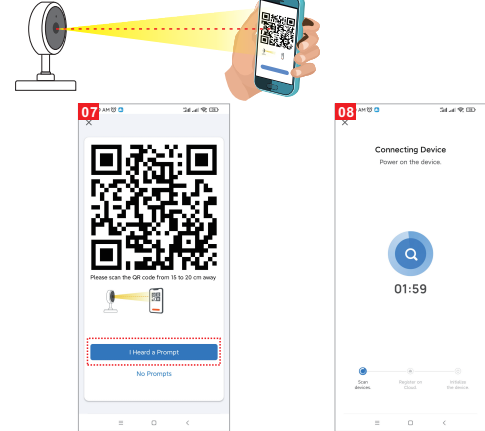


Please note that only 2.4 GH Wi-Fi network is supported;

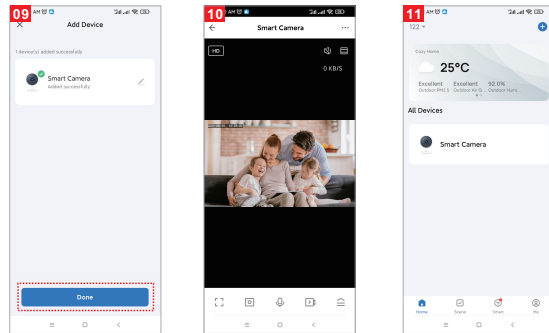
- If the mobile phone is not connected to wi-fi, please click "Connect to Wi-fi" (Figure 04);
- It will jump to the WLAN interface and connects Wi-Fi (Figure 05).
- If the phone is connected to Wi-Fi (Figure 06);



- A QR code will prompt on your screen and you need to scan it with the Smart Camera. (the camera is about 20-30 cm away from the mobile phone lens). Then click "hear the prompt sound" (Figure. 07).
- "connecting" (Figure. 08);

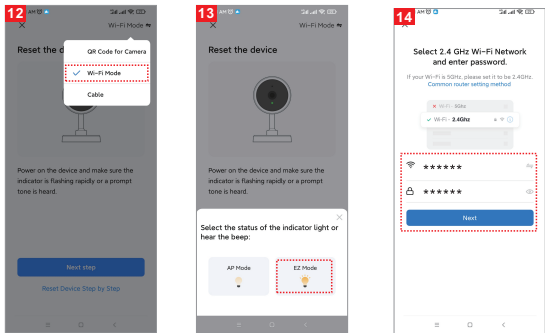


- connection completed(Figure 09), and click "Done";
- Then jump to preview interface (Figure 10)
- After closing the device preview interface, the interface returns to the APP home page. At this time, the connected device will appear on the APP home page (Figure 11). Then you can click directly to the device interface to see the monitoring situation without re-adding afterwards.

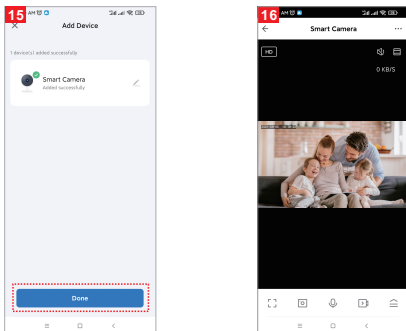


Add device-WIFI fast connection mode

- Select "EZ Mode" (Figure 12)
- Click Next (Figure 13)
- Enter the account and password that can connect to WIFI (Figure 14)



- Click to complete the connection (Figure 15)
- Video screen (Picture 16)



Matters Need Attention

Try to keep away from the metal space;
Avoid the furniture , microwave oven blocked;
Avoid the space where the audio, video and data lines are wound, and keep the space away from them as large as possible;
Ensure that as close as possible to the coverage of wireless Wi-Fi signals. Switching network environment:
In the new network environment, please press the reset hole about 5 seconds, then connect to the network.

The name and content of the harmful substances in the product

Part Name	Harmful Substance					
	Pb	Hg	Cd	Cr(VI)	PBB	PBDE
shell	○	○	○	○	○	○
Board	X	○	○	○	○	○
charger	○	○	○	○	○	○
annex	○	○	○	○	○	○

This product conforms to RoHS environmental protection requirements. At present, there is no mature technology in the world to replace or reduce the lead content in the electronic ceramics, porcelain, optical glass, steel and copper alloy.

FCC Statement

1. This device complies with Part 15 of the FCC Rules. Operation is subject to the following two conditions:
(1) This device may not cause harmful interference.
(2) This device must accept any interference received, including interference that may cause undesired operation.
2. Changes or modifications not expressly approved by the party responsible for compliance could void the user's authority to operate the equipment.
Note: This equipment has been tested and found to comply with the limits for a class B digital device, pursuant to Part 15 of the FCC Rules. These limits are designed to provide reasonable protection against harmful interference in a residential installation.
This equipment generates uses and can radiate radio frequency energy and, if not installed and used in accordance with the instructions, may cause harmful interference to radio communications. However, there is no guarantee that interference will not occur in a particular installation. If this equipment does cause harmful interference to radio or television reception, which can be determined by turning the equipment off and on, the user is encouraged to try to correct the interference by one or more of the following measures:
• Reorient or relocate the receiving antenna.
• Increase the separation between the equipment and receiver.
• Connect the equipment into an outlet on a circuit different from that to which the receiver is connected.
• Consult the dealer or an experienced radio/TV technician for help.
The device has been evaluated to meet general RF exposure requirement. This equipment should be installed and operated with a minimum distance of 20 cm between the radiator and your body.

ISED Statement

This device contains licence-exempt transmitter(s)/receiver(s) that comply with Innovation, Science and Economic Development Canada's licence-exempt RSS(s). Operation is subject to the following two conditions:
1. This device may not cause interference.
2. This device must accept any interference, including interference that may cause undesired operation of the device.
This equipment should be installed and operated with a minimum distance of 20 cm between the radiator and your body. Le présent appareil est conforme aux CNR d'Industrie Canada applicables aux appareils radio exempts de licence. L'exploitation est autorisée aux deux conditions suivantes :
(1) l'appareil ne doit pas produire de brouillage, et
(2) l'utilisateur de l'appareil doit accepter tout brouillage radioélectrique subi, même si le brouillage est susceptible d'en compromettre le fonctionnement. Cet équipement doit être installé et utilisé avec une distance minimale de 20 cm entre le radiateur et votre corps.

Maintenance records:

Maintenance time:

Fault conditions:

Fault cause:

Troubleshooting:

Return and exchange proof:

Date of validity:

Original device ID:

New device ID:

maintenance personnel signature:

Maintenance Department seal:

Maintenance voucher of intelligent

Customer: Mobile:

Address:

Model: Camera ID:

Device store: Date of purchase:

Store address:

Store contact number:

Maintenance voucher of intelligent

Customer: Mobile:

Address:

Model: Camera ID:

Device store: Date of purchase:

Store address:

Store contact number: