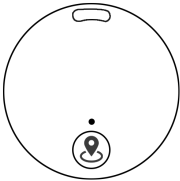
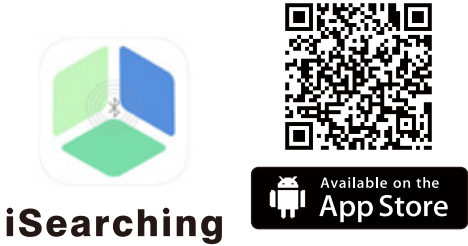


USER MANUAL

English

Model : Y16



Apple, APP Store, iPhone, iPad and iPod touch are trademarks of Apple Inc. Google play is a trademark of Google Inc. All other trademarks used herein are the property of their respective owners.

This manual is designed to help you fully understand how to use the product for your benefit.

Unleash the power of effortless tracking with our cutting-edge Bluetooth wireless device, seamlessly integrated with the 'iSearching' application. Simply pair it with your frequently misplaced belongings and experience a new level of convenience. Within an impressive Bluetooth connection range of approximately 25 meters (75 feet with no barriers), locate your belongings effortlessly. Activate the beep feature through the app, make your phone ring with a double-click, or even snap photos using the button located on the device. Say goodbye to the hassle of searching for keys, bags, remote controls, wallets, and phones – our product ensures you find what matters most with unparalleled ease.

When the product is out of your phone's Bluetooth range, dual alerts are received on both the device and your phone, ensuring you never miss a beat. Plus, the 'iSearching' app will mark the last known location on the map. To unlock this unparalleled feature, simply activate the 'Phone Alarm While Lost function' in the settings. Safeguard your belongings and phone within a certain range, receiving timely reminders if you forget to take them along. Bid farewell to worries – our product ensures you stay connected and protected, every step of the way.

To use the app seamlessly, make sure your device meets these following requirements:

1. Bluetooth 5.2
2. iOS (8.0 or later) or Android (4.4 or later)

APP DOWNLOAD AND INSTALLATION

You can download the 'iSearching' app from:

1. App Store
2. Google Play.

POWER ON/OFF

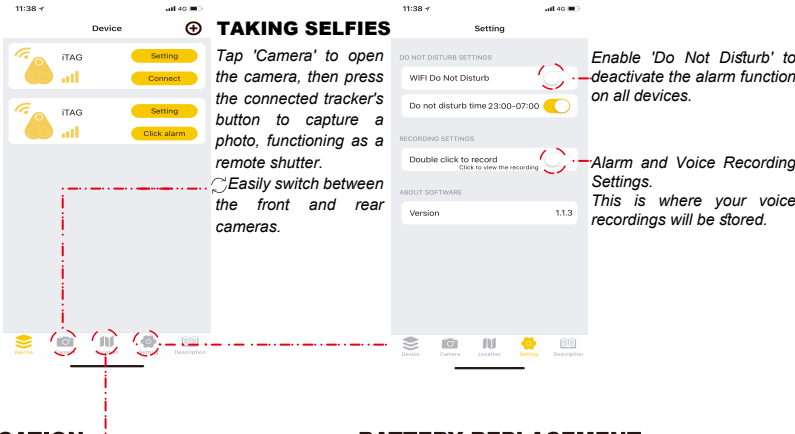
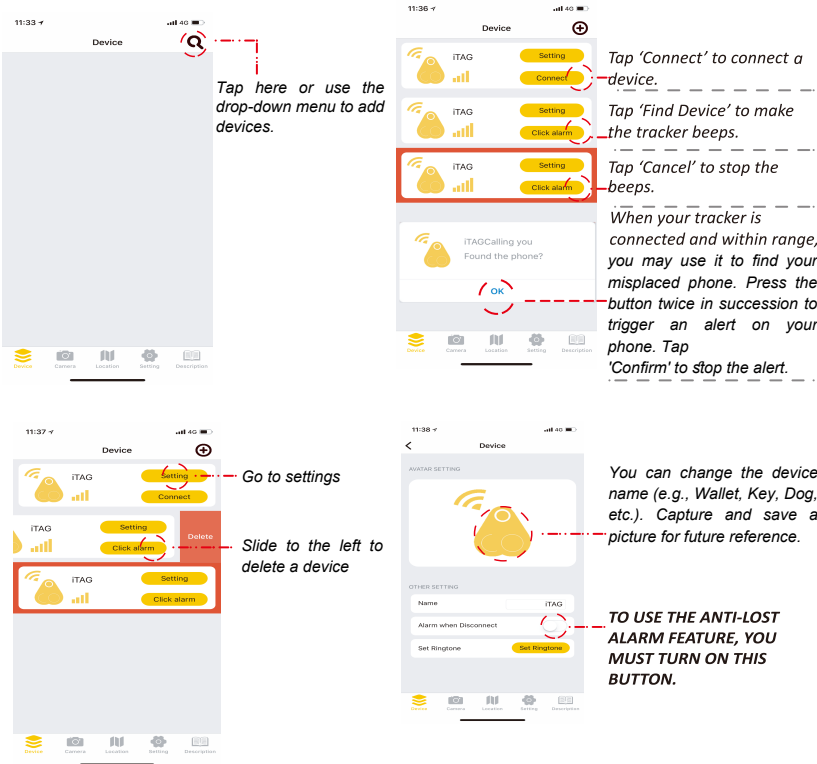


Power On:
Press and hold the tracker's button for at least 3 seconds to turn power on. You will hear two beeps to indicate the device is turned on.

Power Off:
Press and hold the tracker's button for at least 3 seconds to turn power off. You will hear a long single beep to indicate the device is turned off.

GETTING STARTED

Launch the app on your smartphone. Take a moment to check the tutorial page, and don't forget to tap 'Allow' to turn app's notifications on.



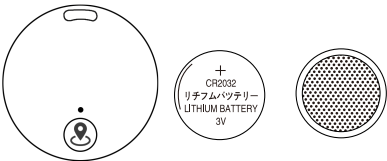
LOCATION

Location History: When you park your car, simply press the tracker's button to mark your current location on the map. To locate your vehicle, just tap 'Location History'.

Lost History: In case you misplace your tracker, find it effortlessly in the 'Lost History.' A pin will be dropped automatically on the map, providing you with the tracker's location. Just tap 'Lost History' to access the record.

BATTERY REPLACEMENT

Battery type: CR2032
The CR2032 is a common type of standard size battery, making it easier to purchase and replace.
To replace the battery, simply open the tracker's button serving as the battery cover



FCC Caution:

This device complies with part 15 of the FCC Rules. Operation is subject to the following two conditions: (1) This device may not cause harmful interference, and (2) this device must accept any interference received, including interference that may cause undesired operation.

Any changes or modifications not expressly approved by the party responsible for compliance could void the user's authority to operate the equipment.

NOTE: This equipment has been tested and found to comply with the limits for a Class B digital device, pursuant to Part 15 of the FCC Rules. These limits are designed to provide reasonable protection against harmful interference in a residential installation. This equipment generates, uses and can radiate radio frequency energy and, if not installed and used in accordance with the instructions, may cause harmful interference to radio communications. However, there is no guarantee that interference will not occur in a particular installation.

If this equipment does cause harmful interference to radio or television reception, which can be determined by turning the equipment off and on, the user is encouraged to try to correct the interference by one or more of the following measures:

- Reorient or relocate the receiving antenna.
- Increase the separation between the equipment and receiver.
- Connect the equipment into an outlet on a circuit different from that to which the receiver is connected.
- Consult the dealer or an experienced radio/TV technician for help.

The device has been evaluated to meet general RF exposure requirement. The device can be used in portable exposure condition without restriction.