

# Instruction Manual Wireless ZigBee Gateway

ZigBee



WORKS WITH  
**alexa**



WORKS WITH  
**Google Assistant**

## Product Specifications

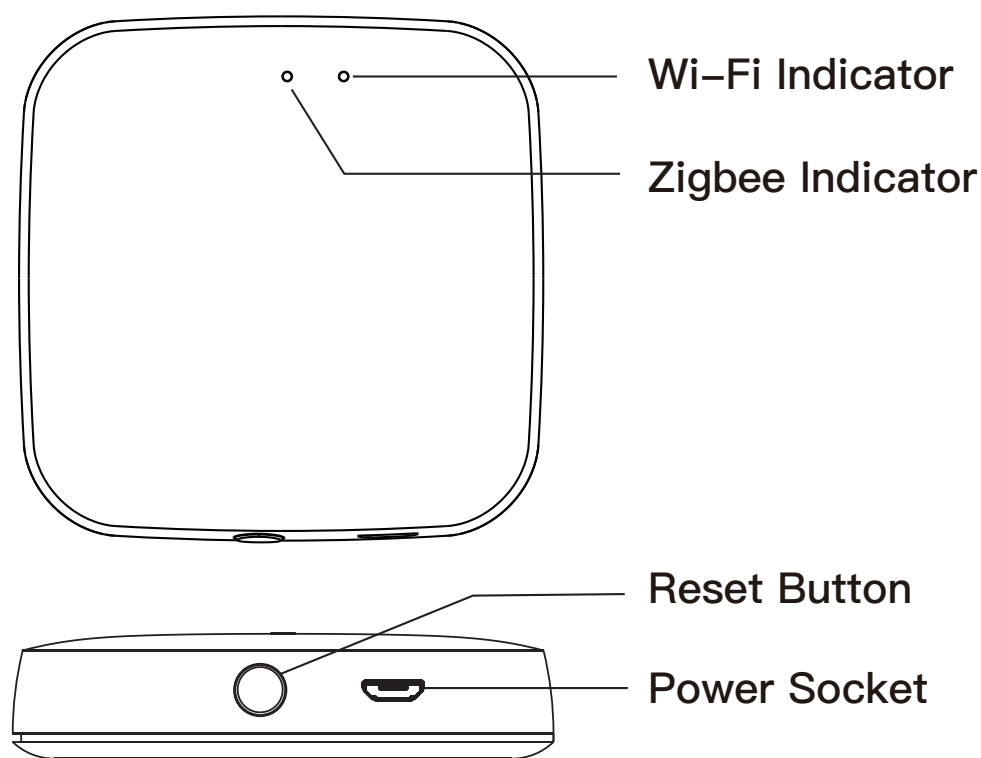
|                       |                            |
|-----------------------|----------------------------|
| Product name          | Wireless ZigBee Gateway    |
| Electrical Parameters | 5V 1A                      |
| Operating temperature | −10°C–55°C                 |
| Operating humidity    | 10%–90%RH(no condensation) |
| Charge Type           | Micro USB DC5V             |
| Wireless Protocol     | WiFi 802.11b/g/n           |
|                       | ZigBee 802.15.4            |

## Packing list

- Zigbee Smart Gateway
- Instruction manual x 1
- Power cable x 1

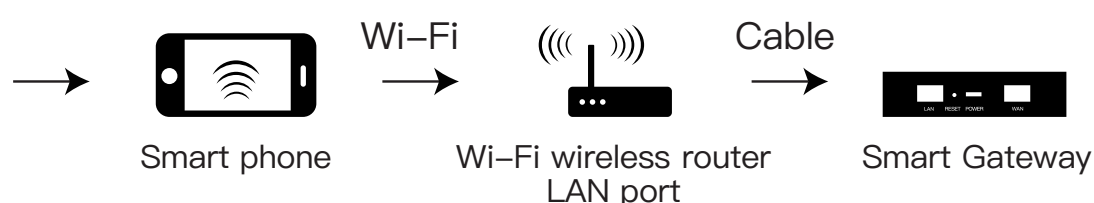
## Product Description

The smart gateway is the control center of the ZigBee device. Users can design and implement smart application scenarios by adding ZigBee devices



## Preparation For Use

### ① Mobile phone is connected to 2.4GHz Wi-Fi



Ensure that the smart phone is with in the same Wi-Fi network of the Smart Gateway to ensure an effective connection between the smart phone and the Smart Gateway

### ② Download and open the App

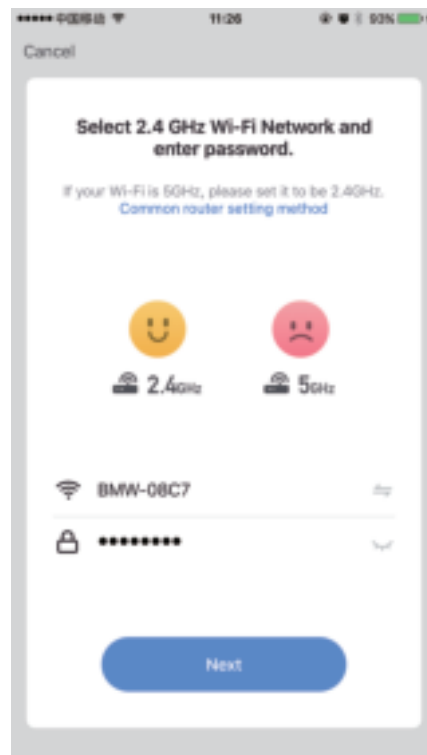
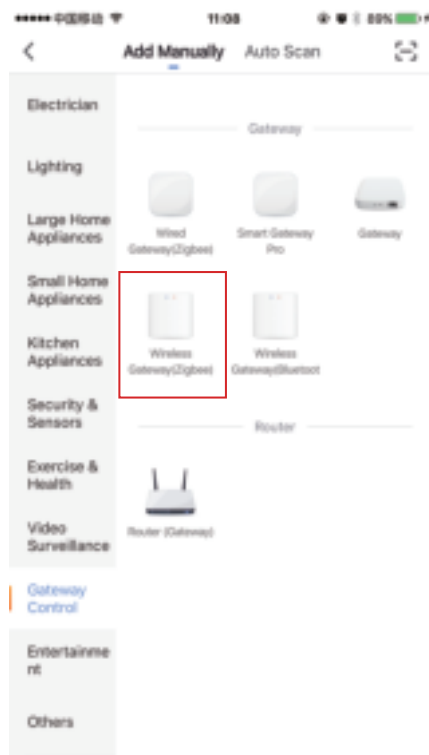
In the App Store, search for the relevant App or scan the QR code on the package/manual to download.

If you are downloading the App for the first time, please tap “Register” to register your account. If you already have an account, please click the “Login” button.

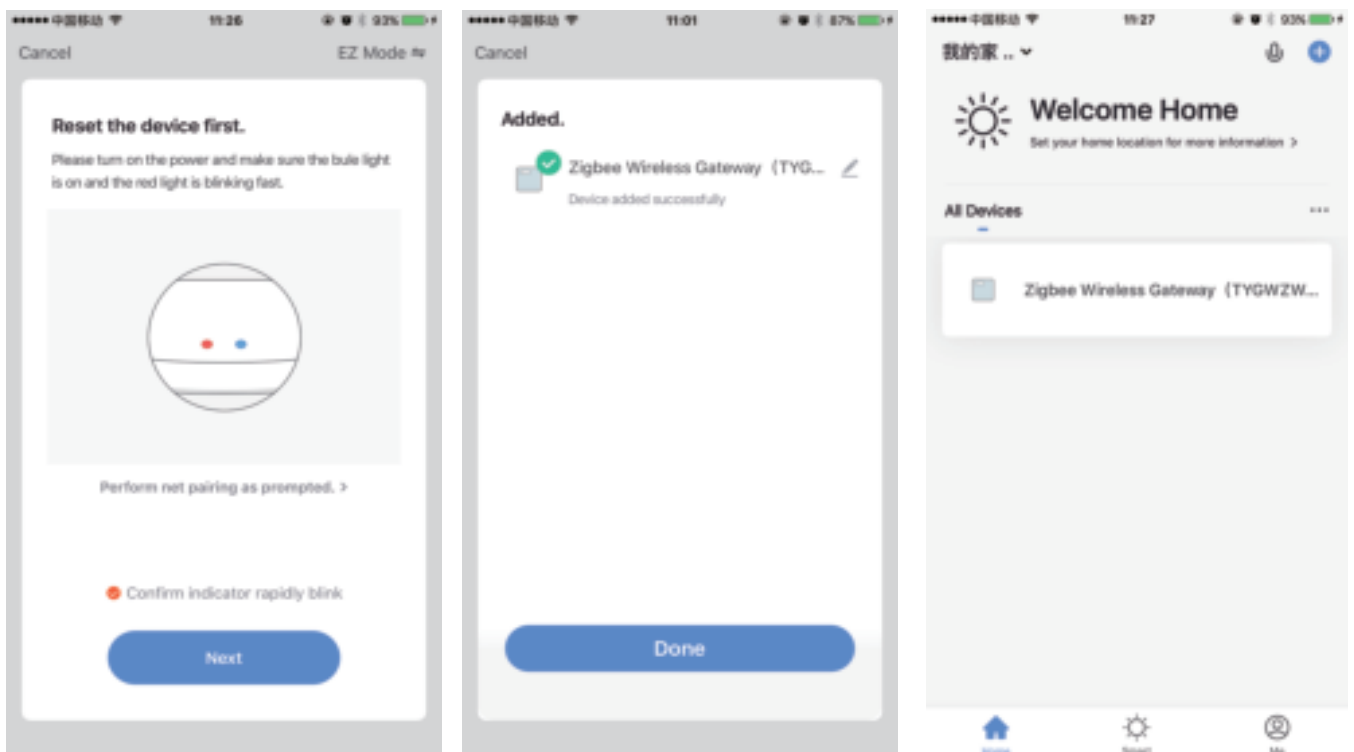


## Add Devices

- Connect the gateway to the power supply, then press and hold “reset button”
- Confirm that the blue light is on and the red light is blinking fast (if the indicator is in another status, press and hold the reset button until the blue light is on and the red light is blinking fast)
- Open the “Smart Life” App and click the “+” on the upper right corner of the screen and choose “Wireless Gateway (Zigbee)” to add



- Select 2.4GHz Wi-Fi network and enter password.  
Confirm when the blue light is on and the red light is blinking fast
- The connection will take about 30–120 seconds, depending on your network condition
- Once the device has been added successfully, you will be able to find the device on “My Home” page



# Electronic Information Products Toxic And hazardous substance Declaration

| Part name | Toxic or harmful substances or elements |            |            |                            |                             |
|-----------|---|------------|------------|----------------------------|-----------------------------|
|           | Lead Pb                                 | Mercury Hg | Cadmium Cd | Hexavalent chromium Cr(VI) | Polybrominated biphenyl PBB |
| PCB board | ○                                       | ○          | ○          | ○                          | ○                           |
| Housing   | ○                                       | ○          | ○          | ○                          | ○                           |
| Cable     | ○                                       | ○          | ○          | ○                          | ○                           |

**O:**

Indicates that the content of this toxic and hazardous substance in all homogeneous materials of this part is below the maximum limit specified in SJ/T1163–2006.

Requirements for Concentration Limits for Certain Hazardous Substances in Electronic Information Products;

**X:**

Indicates that the toxic or hazardous substance contained in at least one of the homogeneous materials of the part exceeds the maximum limit specified in the SJ/T1163–2006 standard



The figures in this label indicate that the product has an environmental protection use period of 10 years under conditions of normal use, and some parts may also have an environmentally friendly use period mark. The environmental protection use period is based on the number indicated by the mark.

## CE Notice



CE Products with the CE marking comply with the Radio Equipment Directive (2014/53/EU), the Electromagnetic Compatibility Directive (2014/30/EU), the Low Voltage Directive (2014/35/EU) – issued by the Commission of the European Union.

Compliance with these directives implies conformity to the following European Standards:

EN300328 V2.1.1

EN301489-1/17 V2.1.1

EN62368-1:2014+A11:2017

EN55032:2015+AC:2016(Class B);

EN62311:2008

---

**Please read the instruction manual carefully before using the product**

## SERVICE

Thank you for your trust and support to our products, we will provide you with a two-year worry-free after-sales service (freight is not included), please do not alter this warranty service card, to safeguard your legitimate rights and interests. If you need service or have any questions, please consult the distributor or contact us.

Product quality problems occur within 24 months from the date of receipt, please prepare the product and the packaging, applying for after-sales maintenance in the site or store where you purchase; If the product is damaged due to personal reasons, a certain amount of maintenance fee shall be charged for repair.

We have the right to refuse to provide warranty service if:

1. Products with damaged appearance, missing LOGO or beyond the service term
2. Products that are disassembled, injured, privately repaired, modified or have missing parts
3. The circuit is burned or the data cable or power interface is damaged
4. Products damaged by foreign matter intrusion (including but not limited to various forms of fluid, sand, dust, soot, etc.)

## RECYCLING INFORMATION

All products marked with the symbol for separate collection of waste electrical and electronic equipment (WEEE Directive 2012/19 / EU) must be disposed of separately from unsorted municipal waste. To protect your health and the environment, this equipment must be disposed of at designated collection points for electrical and electronic equipment designated by the government or local authorities. Correct disposal and recycling will help prevent potential negative consequences for the environment and human health. To find out where these collection points are and how they work, contact the installer or your local authority.





# WARRANTY CARD

## Product Information

Product Name\_\_\_\_\_

Product Type\_\_\_\_\_

Purchase Date\_\_\_\_\_

Warranty Period\_\_\_\_\_

Dealer Information\_\_\_\_\_

Customer's Name\_\_\_\_\_

Customer Phone\_\_\_\_\_

Customer Address\_\_\_\_\_

\_\_\_\_\_

## Maintenance Records

| Failure date | Cause Of Issue | Fault Content | Principal |
|--------------|----------------|---------------|-----------|
|              |                |               |           |
|              |                |               |           |
|              |                |               |           |
|              |                |               |           |

Thank you for your support and purchase at we Moes, we are always here for your complete satisfaction, just feel free to share your great shopping experience with us.



If you have any other need, please do not hesitate to contact us first, we will try to meet your demand.

## FOLLOW US

 MOES.Official

 @moessmart

 @moes\_smart

 @moes\_smart

 @moes\_smart

 www.moes.net



EVATOST CONSULTING LTD

Address: Suite 11, First Floor, Moy Road Business Centre, Taffs Well, Cardiff, Wales, CF15 7QR

Tel: +44-292-1680945

Email: [contact@evatmaster.com](mailto:contact@evatmaster.com)



AMZLAB GmbH

Laubenhof 23, 45326 Essen

Made In China



**Manufacturer:**

WENZHOU NOVA NEW ENERGY CO.,LTD

Address: Power Science and Technology Innovation Center, NO.238, Wei 11 Road, Yueqing Economic Development Zone, Yueqing, Zhejiang, China

Tel: +86-577-57186815

After-sale Service: [service@moeshouse.com](mailto:service@moeshouse.com)