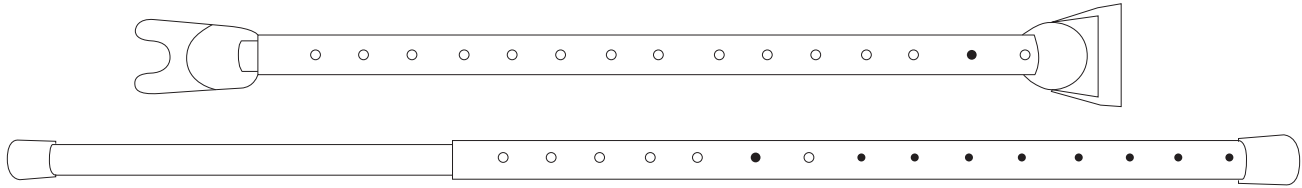


SECURITYBAR™ User Manual

SecurityMan®

Adjustable Door and Window Security Bar



Introduction:

The SecurityMan SECURITYBAR is a heavy duty; dual function security bar made from high grade iron that can secure just about any hinged and/or sliding doors and windows. The SECURITYBAR is fully adjustable with an angled rubber bottom that assures full contact and strong grip on all types of floors without scratching them.

Features:

- Extra security for door and window
- Adjustable to fit most doors and windows
- Simple to use
- Rugged heavy duty iron

Important

This guide provides important information on the use and operation of your SECURITYBAR and the images/features shown throughout the manual are subject to change without notice due to system and firmware upgrades. Please read all the information carefully prior to using the product for the best performance and to prevent any damage/injuries or misuse of the device(s). Customers are entitled to have read through this complete user's manual before using the SECURITYBAR. Any unapproved changes or modifications will void your warranty. Please ensure to have a complete understanding of the following restrictions.

Restrictions:

When using this product, the safety precautions below must be taken to avoid legal liabilities and damages. Retain and follow all product safety and operating instructions. Observe all warnings in the product operating instructions. To reduce the risk of bodily injury and damage to the equipment, observe the following precautions.

- Always use door and window locks in conjunction with the security bar.
- Always make sure that the caps at the end of the bar are pushed in tightly.
- Do not modify the security bar. Improper modifications can cause it to be inoperable and or cause damages to peripheral equipment.
- Never place the rubber foot of the SECURITYBAR on loose rugs or mats.

Contents:



SECURITYBAR



DOOR CAPS



SLIDING DOOR/WINDOW CAPS



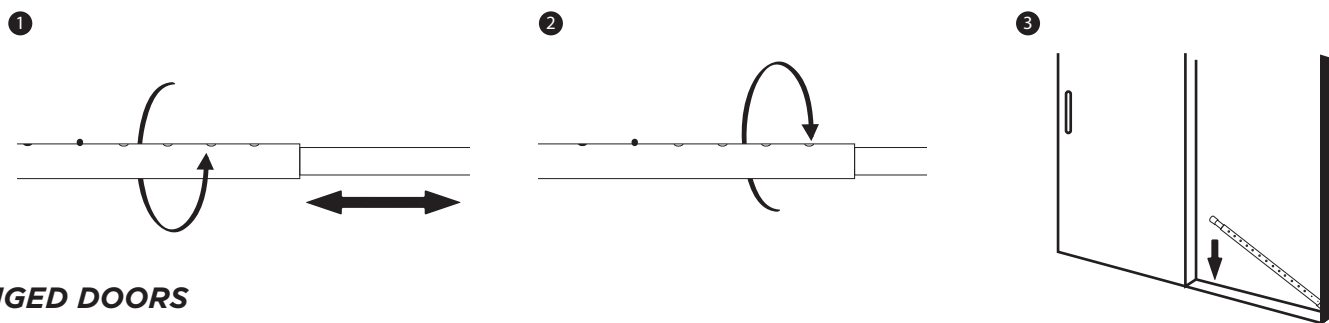
User's Manual

Setup & Installation

The SECURITYBAR can be used on both hinged and/or sliding doors and windows. The following guide will show you how to place the SECURITYBAR on both applications.

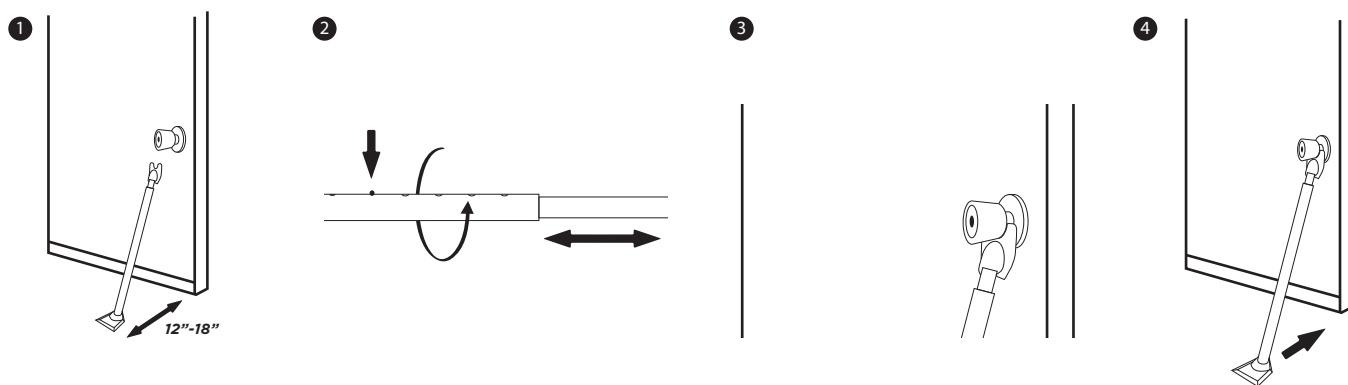
SLIDING DOORS AND WINDOWS

1. Attach the white caps to the ends of the SECURITYBAR, and adjust the length of the bar by pressing in the gold button and slightly rotate either tube so that the alignment holes and button are misaligned, then slide the smaller tube in or out to make your adjustments.
2. Once you've reached the desired length, rotate the tubes so that the button and holes are realigned and the button pops back out of the alignment hole.
3. Place the SECURITYBAR in-between the sliding door /window and the sliding door/window frame.



HINGED DOORS

1. Attach the rubber foot and fork to the ends of the SECURITYBAR and angle the rubber foot end 12-18 inches from the bottom of the door.
 2. Adjust the length of the bar by pressing in the gold button and slightly rotate either tube so that the alignment holes and button are misaligned, then slide the smaller tube in or out to make your adjustments. Once you've reached the desired length, rotate the tubes so that the button and hole are realigned and the button pops back out of the alignment hole.
 3. Place the fork's flat end of the SECURITYBAR under the door knob.
 4. Slide the bottom rubber foot in towards the door until its snug and tight.
- IMPORTANT:** For maximum grip, please refrain from placing the rubber foot of the SECURITYBAR on loose rugs or mats.



Specifications:

2-in-1 Material Force	For door knob, sliding door, & window
Material	High grade iron tube
Force	350lbs max pressure
Adjustable Length	22.25" to 43.7" (inch)
Adjustable hole	15 ports
Gauge	1/16" (thickness)
Color	White
Size	Outer bar 20.5"x1" / Inner bar 20.5" x .875" (without feet attached)
Weight (net / gross)	1.65 lbs / 2.65 lbs

Warranty:

SecurityMan warrants that this product will be free from defects in materials and workmanship for one year or otherwise specified on the product packaging. This limited warranty shall commence from the date of purchase. SecurityMan Products warranty is not transferable and is limited to the original purchaser. If the product is found to be defective then, as your sole remedy and as the manufacturer's only obligation, SecurityMan will repair or replace the product. This warranty shall not apply to products that have been subjected to abuse, misuse, abnormal electrical or environmental conditions, normal wear and tear or any condition other than what can be considered normal use.

Copyright Notice

This manual is furnished under license and may be used or copied only in accordance with the terms of such license. Except as permitted by such license, no part of this publication may be reproduced, stored in a retrieval system, or transmitted, in any form or any means, electronic, mechanical, recording, or otherwise, including translation to another language or format, without the prior written permission of SecurityMan. The content of this manual is furnished for informational use only, is subject to change without notice, and should not be construed as a commitment by SecurityMan. SecurityMan assumes no responsibility or liability for any errors or inaccuracies that may appear in this book. All other product names, trademarks and registered trademarks in this document are the properties of their respective holders.

SecurityMan®
 4601 E. Airport Drive, Ontario, CA 91761, USA
 Tel: 888-977-3777 or 909-230-6668 Fax: 909-230-6889
 Email: info@securitymaninc.com Website: <http://www.securitymaninc.com>
 Copyright 2017 by SecurityMan v2.2

If you encounter any difficulty in the operation of this product after reading the manual, please feel free to contact us. You can reach us by phone at 1-888-977-3777 from 8:30 AM to 5:30 PM Monday through Friday (Pacific Standard Time) or by email techsupport@securitymaninc.com. We will be happy to answer your questions and help you in any way we can.

For Customer Service: 888-977-3777