

# CAMBRIDGE 54" SINGLE SINK BASE CABINET

# ARIEL

## BASE CABINET DIMENSIONS

54" W x 21.5" D x 34.5" H



## FEATURES

- Solid wood frame & plywood panels
- Dovetail drawers and joints
- Soft closing doors & drawers

## HARDWARE FINISHES\*



Brushed Nickel    Satin Brass    Matte Black    Polished Chrome

\*Hardware comes preinstalled with the illustrated option. Other finishes are available on our online store if you prefer a different one.

## AVAILABLE COLORS

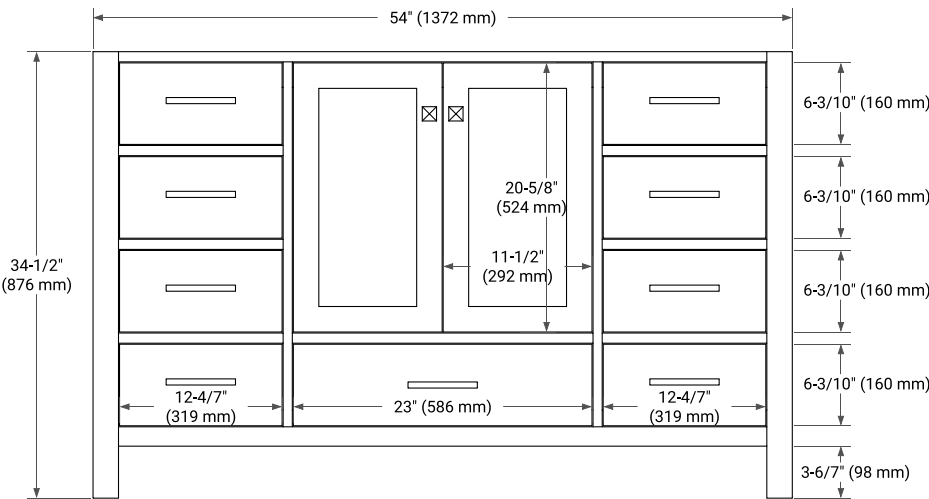


White    Grey    Midnight Blue    Espresso

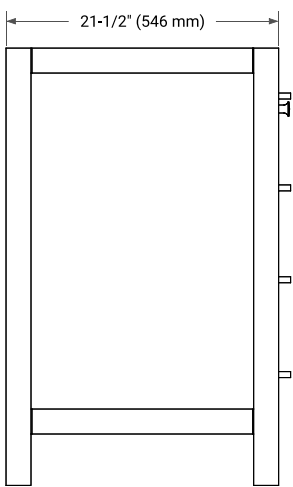


Oak    Black Oak    Brown Oak

FRONT VIEW



SIDE VIEW



PLAN VIEW

