

# Mini WiFi Camera

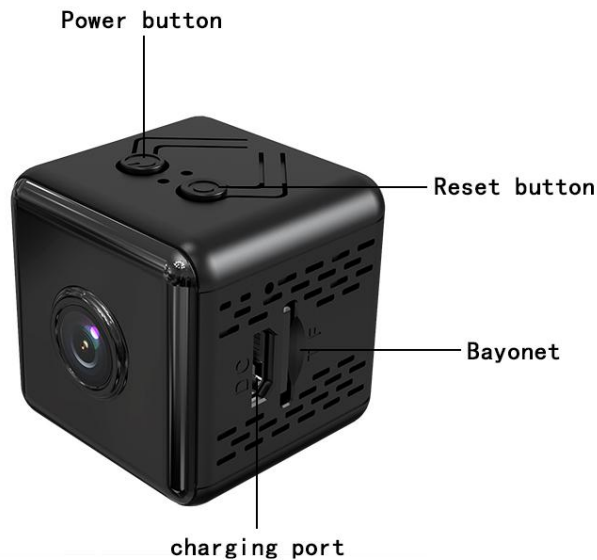
## User Manual



**APP: iWFCam**

Thanks for choosing our small wireless camera. Please follow the manual to set up the camera.

## I . Product Description



ON/OFF: Press once to turn on the camera; Press for 3 seconds to turn it off;

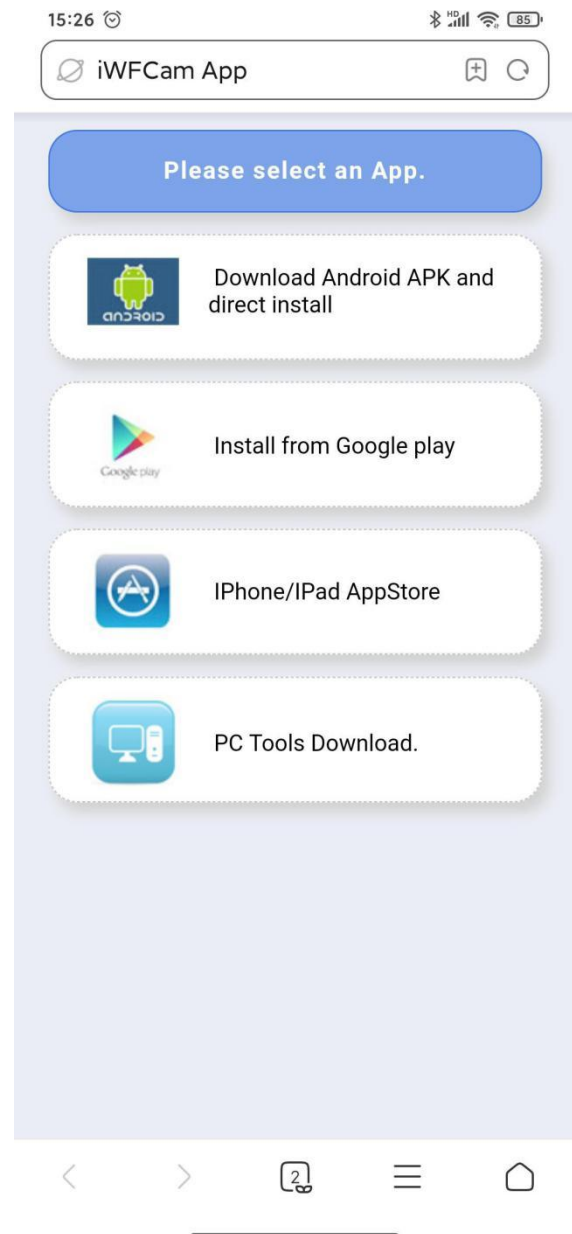
MODE: Press for 6 seconds to reset the camera;

CARD PORT: Insert Micro SD card to save recordings(Max 128G, not included);

## II. APP Settings

1. Download the app “iWFCam”

Scan the QR code below to download the APP compatible with your phone system.



## 2. Camera-Phone Connection(AP Mode):

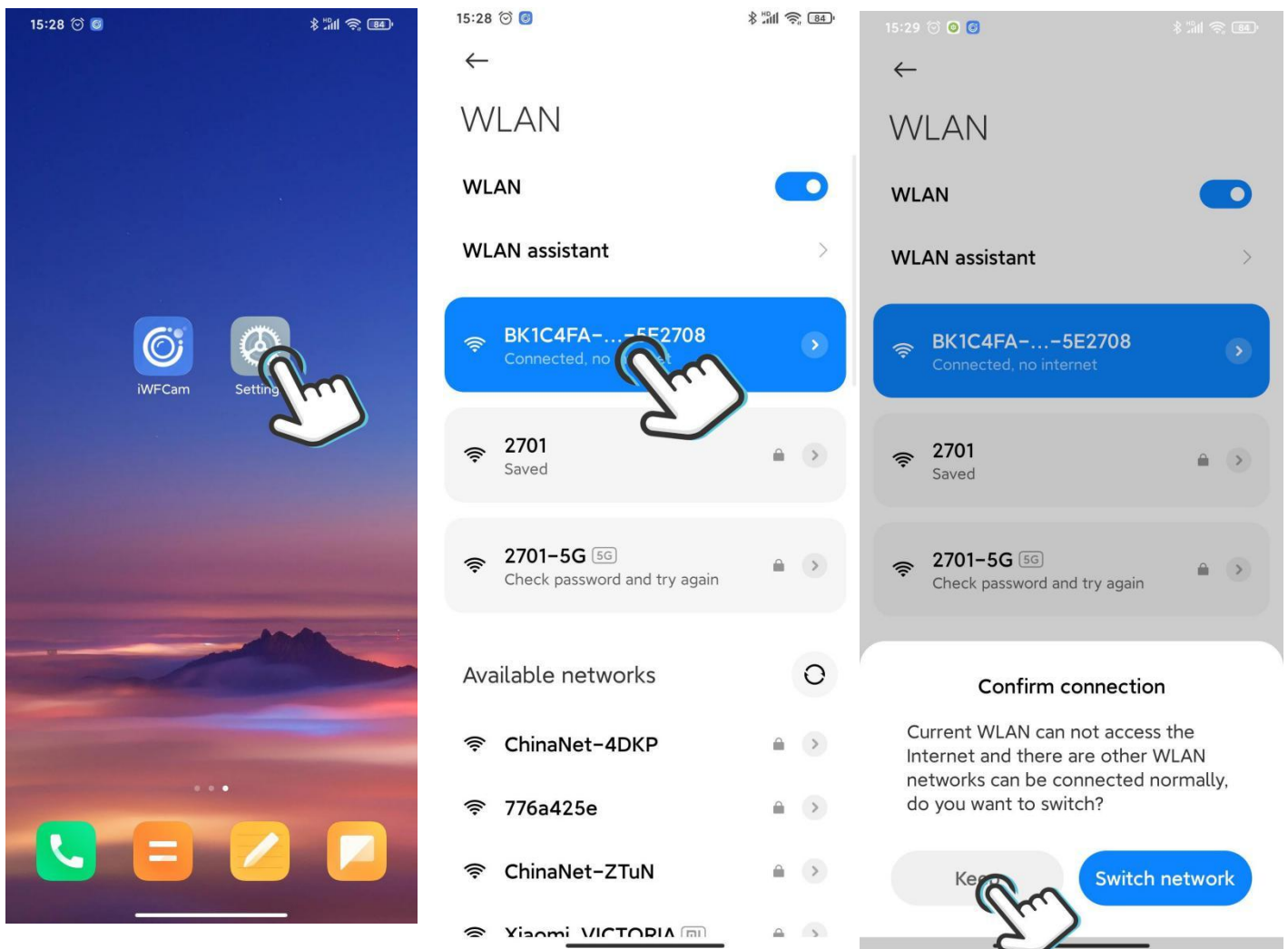
---Press ON/OFF button once to turn on the camera;

---Tap into your phone Settings WLAN, find the camera hotspot signal(named with BK\*\*\* without password), then connect it;

---If you are using Android phones, it'll pop-up a message to Confirm Connection, please keep connecting with the camera;

Please refer to the below pics.

Note: Camera-phone connection should be finished within 5 meters for strong signal.



### 3. Camera-APP Remote Connection(IP Mode)

---Start APP iWFCam, the camera will auto be added Online;

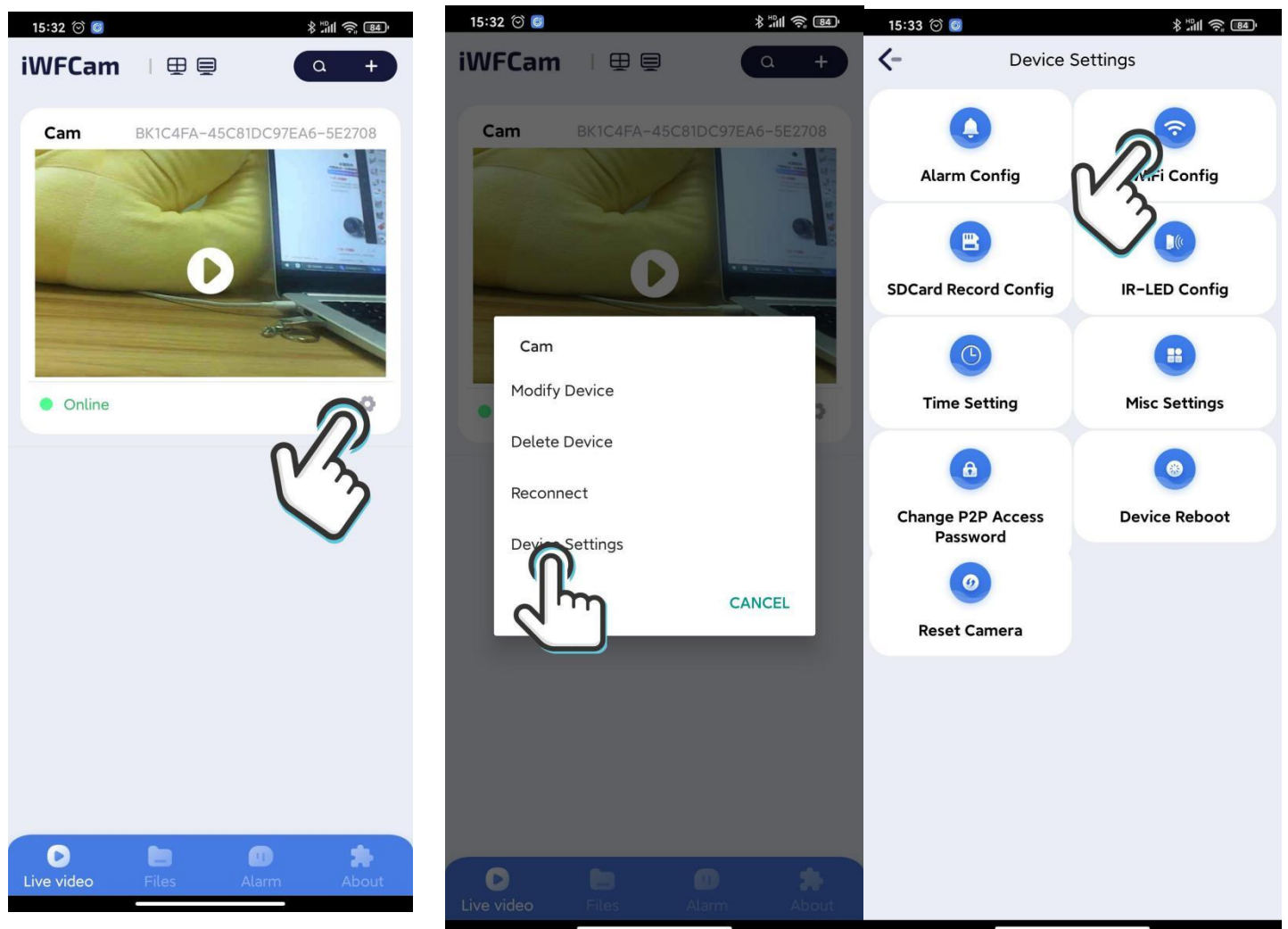
---Click Setting icon beside the camera in the APP, set Wifi Config;

choose the router and enter the router network password;

---Wait for the camera's update process for remote control; Once it shows Online, it means you have successfully done it;

Please refer to the below pics.

Note: Camera-router connection should be finished within 5 meters for strong signal.



#### 4. Camera Live-feed Page

---Click the camera in the APP, it will pop-up message to change the password; skip or change it for security;

---Then you can see the live feed camera; in this page, you can adjust the Brightness, Night Vision, Video Resolution, Video, Photo, etc.

Please refer to the below pic

