

EN



OBDelevenTM

USER MANUAL

Smart diagnostic tool for understanding
and improving your vehicle.

IMPORTANT SAFETY INSTRUCTIONS



Do not disassemble, puncture, modify, drop, throw or cause other unnecessary shock to device. Do not use the device if it is damaged or modified as it could harm your vehicle.



All wireless data transferring devices produce interference that may affect other devices which are placed nearby.



Please consult representatives of your vehicle model regarding OBD II location on your vehicle. In case you are not sure of proper connection, please consult qualified personnel.



Do not expose the device to any open flame sources or excessive temperature.



IMPORTANT SAFETY INSTRUCTIONS



The device is susceptible to water and humidity. Do not submerge or expose to water.



Installation and/or handling during a lightning storm is prohibited.



Do not use OBDeleven if it distracts driver or causes inconvenience due to OBD II placement. Device must not interfere with driver.



The device uses SELV limited power source. The nominal voltage is 12 V DC. The allowed range of voltage is 10 V...30 V DC.



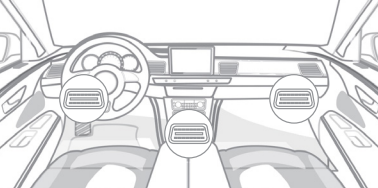
Download application from **App Store** (for iOS devices) or **Google Play** (for Android devices).



Available on the
App Store



GET IT ON
Google Play



QUICK START

Plug the device into **OBD-II** port. Start the engine. Make sure power LED is on. Power LED indicates Bluetooth status. RED power LED - device is on. Blinking LED indicates your device is in working condition.

The **OBD-II** port is usually located under the dashboard or in the left side beneath the steering wheel column. It may also be located behind a latch or contain a cover.



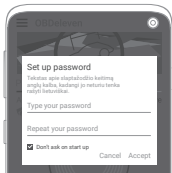
ACCOUNT

Create an account: connect with **Facebook**, **Twitter** or sign up with **e-mail**.



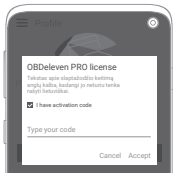
CONNECT TO YOUR CAR

Pair the device with your smartphone or tablet via Bluetooth. Open OBDeleven application, turn on Bluetooth and click "Add device". Place your smartphone next to the device to pair. Enter pairing code: 1234



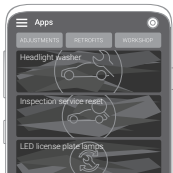
CREATE DEVICE PASSWORD

Enter 6 digit code to create unique device password. This will help you to protect and secure your vehicle from unauthorized access.



ACTIVATION

If you bought PRO or ULTIMATE pack you will be asked to activate PRO license. If you already had PRO license on your account it will be activated automatically.



ONE-CLICK APPS AND CREDITS

Package includes credits, which enables to use one touch coding features - activate new functions or disable unwanted ones, unlock cool visual features, control comfort systems, perform service, adjust car lights and more with just one click.

COMPATIBILITY

Works with all iOS 11 and newer iPhones/iPads/iPods

Works with all Android 4.4 or newer phones/tablets that support Bluetooth **OBDeleven** device is designed to fully support diagnostic, programming and coding functions for all* VAG group vehicles: Audi, Volkswagen, Škoda, Seat, Bentley**, Lamborghini**.

To check full list of supported vehicles please check "Supported vehicles" section in **OBDeleven** application.

*Manufactured after 1991

**Manufactured after 2011



BASIC FUNCTIONS

Cloud-based automotive diagnostics software for iOS and Android operating systems can fully access your car for:

- Vehicle identification from VIN
- Read and clear trouble codes from all control units
- Read information about control unit
- Share diagnostic data log via email
- Observe battery status
- Log connected cars history
- Engine, Equipment and fault code lookup
- Advanced control unit information
- Live data / Charts
- Sub control units information
- Security access / Login finder
- Control unit reset (UDS)
- Diagnostic service change
- CAR programming and backup history

PRO FUNCTIONS

OBDeleven device becomes a professional diagnostic tool upgraded with PRO license, which allows:

- Trouble code Freeze frame
- Advanced control unit information
- Live data / Charts
- Coding / Coding II / Long coding
- Sub control unit coding
- Gateway installation list
- Adaptation / Long adaptation
- Output test
- Security access / Login finder
- Control unit reset (UDS), backup and programming history
- Diagnostic service change
- CAR programming history
- Basic settings

NEXTGEN OBDELEVEN SPECIFICATIONS

Size

41 x 33 x 24 mm

Weight

Weight

Idle Power Consumption / Max Power Consumption

0.42 W / 0.54 W

Input Current

45 mA

Input Voltage

12 V

Bluetooth

4.2

Colour

Black



TROUBLESHOOTING TIPS

1. If your phone do not find **OBDeleven** device via phone Bluetooth settings:

- Make sure that RED power LED on device is active
- Disable and then enable phone Bluetooth
- restart your phone
- Try to search for device via Bluetooth settings with vehicle ignition turned off
- Make sure that your phone is not connected to any other Bluetooth device (car media, hands-free etc.)
- Try to unpair all paired devices

2. If the device is plugged into the vehicle and indicator light is not turning on, contact **support@obdeleven.com**

RETURN POLICY

We are accepting 14 days return policy. Item must be returned in original package and without marks of use.

- Hardware or accessories, purchased online, may be opened for the purpose of inspection (but not used) and may be returned for refund or exchange within 14 days of the dispatch date.
- Virtual items as PRO version activation can't be returned for refund.
- We are unable to refund postage and packaging costs incurred for returning unwanted products for international or Lithuanian orders.
- Items bought as part of a bundle (including PRO license or credits, hardware and software packs) if returned digital content used, will result in the full price being charged for other items in the bundle. Your refund will be adjusted accordingly.
- If returning hardware, it must contain all the components.

WARRANTY

Voltas IT guarantees its products to be free of any manufacturing defects for a period of 24 months. If a product should fail within this specific warranty time, the product can be:

- Repaired
- Replaced with a new product

This warranty does not apply to Products you purchased from unauthorized resellers, or where instructions for use or activation of the Product are not complied with or where Product is damaged as a result of abuse, accident, modification or other causes beyond our reasonable control. Any replacement product will be warranted for the remainder of original warranty period or 90 calendar days, whichever is longer.

HOW TO SUBMIT A WARRANTY CLAIM

To obtain warranty service, contact us via our help platform <https://voltas-it.helpshift.com>, instructions will follow on how to submit your claim. You will be responsible for securely packaging the Hardware and including the requested information, such as account verification information. You are also responsible for all shipping and handling charges, in addition to any applicable customs duties, VAT or other associated taxes or charges when returning the Hardware. Hardware for which Voltas IT cannot reproduce the claimed defect or for which your purchase cannot be verified will be rejected.

For more detailed Warranty information please visit – <https://obdeleven.com/en/content/13-warranty>



REGULATORY COMPLIANCE

FCC Compliance statement

NCC statement

Waste Electrical and Electronic Equipment Directive



DECLARATION OF CONFORMITY

Refer to article 10(9), shall be provided as follows:

Hereby, Voltas IT, LLC declares that the radio equipment type OBDeleven is in compliance with Directive 2014/53/EU.

Please note that, in the European Union, any warranty period less than two year shall be increased to two years.

it's two step process - press "menu", press "about" and you can see the FCC ID

A stylized, dark gray silhouette of a car, viewed from the side, is positioned in the background. The car has a rounded body, a visible front wheel with a six-spoke hubcap, and a rear wheel with a similar hubcap. The car is angled slightly upwards. The background is a light gray with a large, faint circular graphic element.

OBDeleven™

VOLTAS /T

Manufacturer: Voltas IT, LLC

Custom made in EU. High quality standard by European manufacturers.

Developed by Voltas IT, LLC in Lithuania, assembled in Lithuania.

Voltas IT, LLC, Inovaciju str. 3, Biruliskes, LT-54469, Kaunas region, Lithuania | TM OBDeleven and Voltas IT, LLC.
All rights reserved.

FCC Regulations:

- This device complies with part 15 of the FCC Rules. Operation is subject to the following two conditions: (1) This device may not cause harmful interference, and (2) this device must accept any interference received, including interference that may cause undesired operation.
- This equipment has been tested and found to comply with the limits for a Class B digital device, pursuant to part 15 of the FCC Rules. These limits are designed to provide reasonable protection against harmful interference in a residential installation. This equipment generates, uses and can radiate radio frequency energy and, if not installed and used in accordance with the instructions, may cause harmful interference to radio communications. However, there is no guarantee that interference will not occur in a particular installation. If this equipment does cause harmful interference to radio or television reception, which can be determined by turning the equipment off and on, the user is encouraged to try to correct the interference by one or more of the following measures:
 - Reorient or relocate the receiving antenna.
 - Increase the separation between the equipment and receiver.
 - Connect the equipment into an outlet on a circuit different from that to which the receiver is connected.
 - Consult the dealer or an experienced radio/ TV technician for help.
- Changes or modifications not expressly approved by the manufacturer could void the user's authority to operate the equipment.

FCC RF Radiation Exposure Statement

This equipment complies with FCC radiation exposure limits set forth for an uncontrolled environment. To comply with FCC RF Exposure compliance requirements, this grant is applicable to only Mobile Configurations.