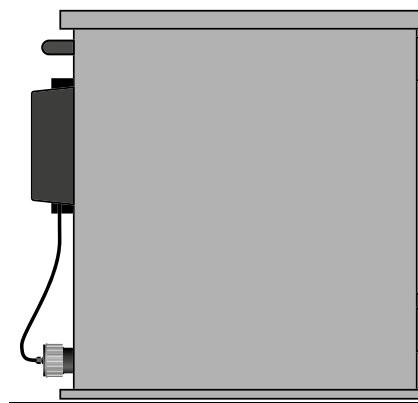


User guide

Motor replacement of the Koi Pro Combi Drum



Replacement of the motor of the Koi Pro Combi Drum

To replace the motor of the Combi Drum, you need the following tools:

hex keys - small screwdriver - Phillips screwdriver - wrenches - torque wrench - pipe wrench.



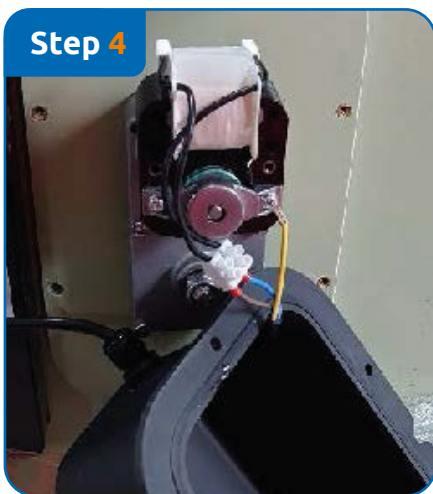
Unplug everything so that there is no power on the electronics. See to it that the water is out of the filter as much as possible, so that no water can come into contact with the electronics during (dis)assembly. pipe wrench.



Start with removing the cap of the motor by unscrewing the hex head bolts (**Photo step 1**)



Unscrew the electric wires and remove them from the terminal block (**Photo step 2**). Then unscrew the ground wire (**Photo step 3**) and put the cover with the wires stuck in it to one side.



Now there are 2 options regarding the position in which the motor is mounted: if the white coil is up as in photo 4, then continue with step 6. If the white coil is down as in photo 3, then continue with step 5.



If the white coil is down, it is difficult to reach the locknut of the shaft. To have good access to it, completely loosen the 2 bolts holding the coil (**Photo step 3**) so that you can remove the coil completely. As you replace the complete motor, there is no need for keeping the coil on.



Loosen the locknut (17mm) of the shaft (**Photo step 5**) while holding the drum so that it cannot rotate.

Motor Replacement of the **Koi Pro Combi Drum**



Now loosen the bolts holding the motor to the filter (**Photo step 6**).



Remove the locknut completely and carefully remove the motor from the shaft. Make sure that the seal ring around the shaft does not fall and you lose it.



Now place the new motor over the shaft (**Photo step 7**) and screw the motor back to the filter wall with the hex head bolts as it was (**Photo step 6**)



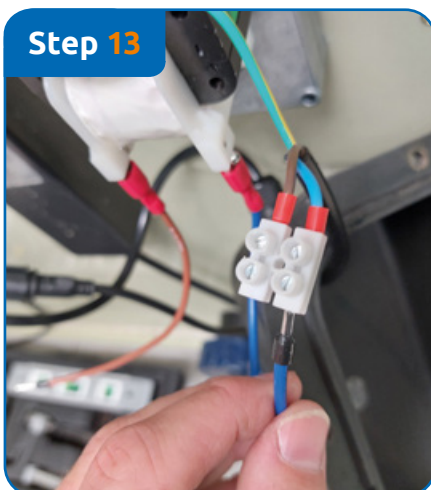
Now tighten the locknut of the shaft with a torque wrench at 65 Nm (**Photo step 8**); again make sure that you (better yet, someone who helps) hold the drum so that it cannot rotate with it.



Then loosen the two screws on the new motor (**Photo step 9**) and turn the motor 180° so that the coil is pointing down again (**Photo step 10**). Make sure that the black ring in this block remains in the right place.



Screw the motor in this position, reconnecting the ground wire (**Photo step 11**).



Attach the supplied cable shoes over the contacts on the motor (it does not matter where the brown and blue wire are, **Photo step 12**) and screw them back into the terminal block (**Photo step 13**).

Final instructions

- Now screw the protective cap back on as it was (**Photo step 1**).
- Let water flow into the filter again and check that everything is watertight.
- Then turn everything on and check for proper operation.
- **Your filter is now ready for normal use again.**

Für Deutsch, scannen Sie den QR
Pour le français, scannez le QR
Voor Nederlands, scan de QR

