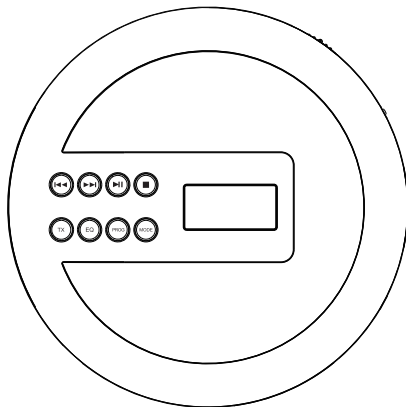


PORTABLE CD PLAYER



►► User Manual

►► CONTENTS

IMPORTANT SAFETY INSTRUCTIONS	01
PACKAGING & PRODUCT	03
What's in the box	03
The CD player	03
TROUBLESHOOTING	04
USER GUIDE	05
Insert a disc	05
Insert an earphone	05
Turn on the player	05
Turn off the player	06
Charge for the player	06
PLAY	07
How to setup the circle mode	07
How to program the play	07
How to setup sound	07
OTHER FEATURES	08
Time setting of screen sleep	08
Key lock	08
Last memory	08
Connect to AUX devices	08
SPECIFICATIONS	08

IMPORTANT SAFETY INSTRUCTIONS

Please read this manual carefully before using this player and keep it for later reference.

Warning:

The player

To reduce the risk of fire or avoid the damage to the human body, please follow the instructions below:

1. If the player fails to work, please contact our after-sales staff in time, professional technical support staff will provide you with detailed answers.
2. The player can not be used or stored in moist environment, please keep the player away from any liquid, steam or vapor, such as rain drop, mist etc.
3. Please do not place any liquid or metal gadgets onto the player, such as pin or a cup of coffee.
4. Please do not expose the player to the sunlight and keep it away from fire heater. The player can not be placed under high temperature environment.
5. All professionals with extensive electronic knowledge and maintenance experience are allowed to disassemble the player for maintenance. The replacement of spare parts must be done in strict accordance with the parameters of the circuit design.
6. Please do not stick or hit the player with sharp objects.
7. There are light emitting diodes in this player, staring directly with eyes should be avoid to prevent visual impairment from being caused.
8. Children under 12 years is not allowed to use the player individually.

Battery

If the player you purchased contains batteries, please do not disassemble the player or charge the player with other adapters that do not meet the electrical parameters of this product to avoid circuit failure. For your safety, please treat the built-in high-capacity polymer lithium battery by following the instructions below:

1. Please do not remove the battery pack.
2. Please do not beat or impact this player.
3. Please do not make the battery short circuit or pierce it.
4. Please do not place the player under high temperature which is above 140°F (60°C).
5. Please do not put the battery in a fire.
6. If the battery has been damaged, please ask a professional to replace the battery with same specification, or contact our after-sales support for help.

Hearing protection

Listen at medium volume:

Please adjust the volume to an appropriate level. If the volume is too high, it may damage your hearing or even cause a permanent damage.

Set the volume to a low level:

Increasing the volume slowly, until a comfortable, clear sound can be heard.

Listen to the audio within a reasonable time frame:

Long time listening, even at a reasonable volume may cause damage to your hearing. Please use the product properly and get a rest when necessary.

Environmental protection

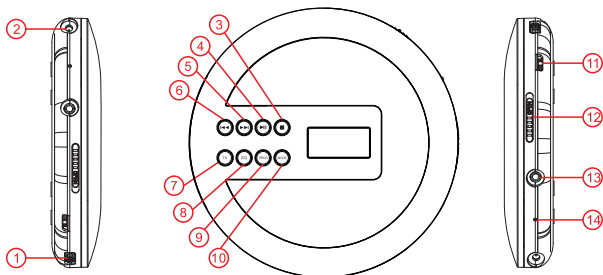
To protect the environment and human health, please follow local laws and regulations on the abandon of the package, electronic product or battery. Please do not put the product together with household waste.

PACKAGING & PRODUCT

What's in the box

1*CD player	1*3.5 to 3.5mm AUX cable
1*USB charging cable	1*User manual
1*Earphones	

The CD player



Item	Function	Item	Function
1	Power ON/OFF Switch/Hold	8	EQ Sound effect
2	DC In 5V	9	PROG
3	STOP	10	Mode
4	Play/Pause	11	Volume Knob
5	Next	12	Open
6	Previous	13	Earphone Port
7	TX	14	Charging LED

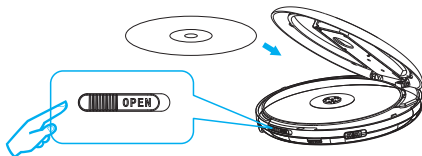
TROUBLESHOOTING

Problem	Reason	Solution
Cannot read discs.	The disc is installed incorrectly.	1.Make sure the label side of the disc is facing up; 2.Ensure the disc is fully into the place.
	The disc is dirty or damaged.	1.Make sure the disc is not heavily scratched or damaged; 2.Wipe the disc gently from the center radically out to the edge with a clean, soft cloth; 3.Try another new disc to check if the disc is faulty.
	The loader is dirty.	Wipe the lens gently with a degreasing cotton swab.
Cannot charge battery.	There is no current at power outlet.	Make sure that the power outlet is worked.
	The plug is not plugged in correctly.	Make sure that the two plugs of the power cord are connected properly.
	The charger is damaged.	Replace the charger with another one match the specification.
	The player is damaged.	Please contact us or ask professional to repair.
The player cannot be turned on.	Switch is not turned on.	Please turn the OFF/ON button on the side to ON.
	The built-in battery is exhausted.	Charge the battery.
	The player is damaged.	Please contact us or ask professional to repair.

USER GUIDE

How to insert a disc

Push the OPEN button to the right to open the door. Insert your index finger into the center hole of the disc and take the edge of the disc with your thumb. Keep the side with words upward while inserting the disc into CD player, press the disc gently to make it steady, and make sure if the disc has been in place. Close the disc door gently and completely, otherwise the player will not read the disc.
(Note: The player is only compatible with CD, CDR, MP3, HDCD formats.)



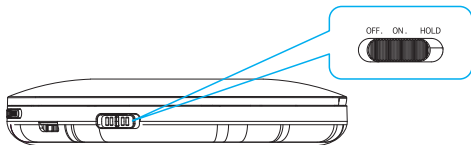
Insert an earphone

Only earphone with 3.5mm plug is compatible with this player. In order to experience better sound quality, you can use standard earphones of an iPhone on the player, but some earphones of cellphone may produce noise. If the earphone cannot be supported by the player, please use standard headphones of this player.

How to turn on the player

The power switch is located on the side. Please toggle it to ON position to play normally. When a disc is played to the end or there is no disc, the player will enter a standby mode after 30 seconds. Please press the PLAY button again to restart the player.

Note: The power switch has a key lock function which is designed to lock the operation of all the keys. A HOLD word will be displayed on the screen at this time. Do not toggle the power switch to the HOLD position before the operation is completed.

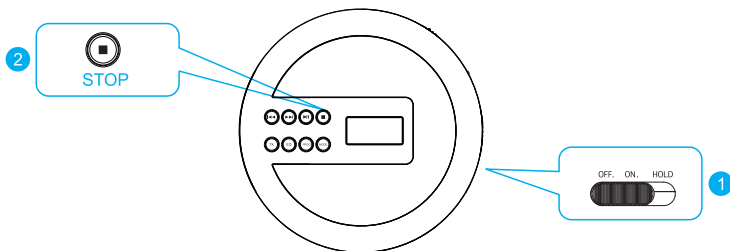


How to turn off the player

There are two ways to turn off the player:

1. Please toggle the power switch to OFF position if the player will no longer be used for a long time;
2. The player will enter a standby mode by pressing the STOP button twice in succession, but at this time, the power of the player is not completely disconnected.

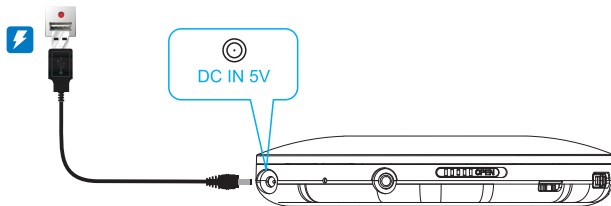
Note: Please turn the power switch to OFF position if the player will no longer be used for a long time.



How to charge for the player

How to choose a charger: This product is only equipped with one charging cable. You can choose any charger that supports USB2.0 protocol or standard USB charger of a cellphone running in Android or iOS system to charge for the player.

Charging time: It will take around 4 hours to fully charge the player according to the standard USB2.0 protocol. When the battery is being charged, the LED indicator is red. Once the player is fully charged, the LED indicator will turn blue.



PLAY

How to setup the circle mode

Each time the MODE button is pressed, the order of the tracks played will be as follows: Repeat 1 (REP1), Repeat all (ALL), random play (SHUF), preview play (INTRO) (only 10 second per track will be played in this mode).



How to program the play

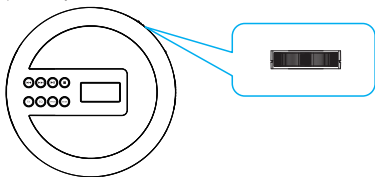
Press the PROG button to enter the programming mode when the play stops, press the PREVIOUS or NEXT button to select the track you want to program, press PROG again to confirm the programming. Up to 30 tracks can be programmed in this mode. After that, press the PLAY button to enter the programming play mode. Press the STOP button directly to enter the stop mode to cancel or reprogram.



How to setup sound

How to adjust volume

The volume knob is located on the side of the player. Rotate it to the left or right to decrease or increase the volume. Please listen to music at an appropriate volume to protect your ears.



How to setup sound effect

Press the SOUND button to changes the different sound effects. There are a total of 5 sound effects: BBS, POP, JAZZ, ROCK, and CLASSIC.



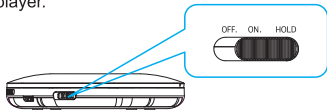
OTHER FEATURES

Time setting of screen sleep

The screen will be turned off after 10 second of inactivity. The screen will be turned on when any button is pressed.

Key lock

After playback mode and sound effects have been setup, you can toggle the power switch to the HOLD position in order to prevent the environment, for example naughty children or crowded occasions from affecting the setting of player.



Connect to AUX devices

In order to use this player in different occasions, an extra AUX cable has been supplied to connect this player to any device with AUX interface conveniently, such as: home theater, music center, Bluetooth speakers, vehicles, headphone amplifiers and more.

Last memory

ON: The player will return to the last stop-track on the disc.

OFF: The player will not return to the last stop-track on the disc.

Press and hold the PROG button to turn the last memory function on or off. The ON or OFF word will be displayed on the screen at this time. The last memory function is turned on by default.



SPECIFICATIONS

Size	140*30mm	D/C conversion	16Bit
Weight	230g	Sampling frequency	44.1KHZ
Power source	DC 5V/1A Micro USB2.0 Standard	Frequency response	20-20KHZ
Charging voltage	DC 5V/1A	Power output of earphone	16mW+16mW/16-32Ohm
Operating voltage	3.7V	Impedance of earphone	32ohm/16mW
Power consumption	about 1.5W	Supported disc formats	CD,CDR,HDCD,MP3
Battery	Lithium-ion polymer 3.7V/2000mah	Shockproof time	CD 60 seconds / MP3 120 seconds or more

