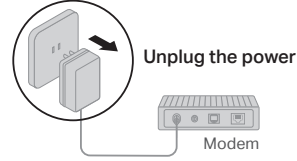


# 1 Connect the Hardware

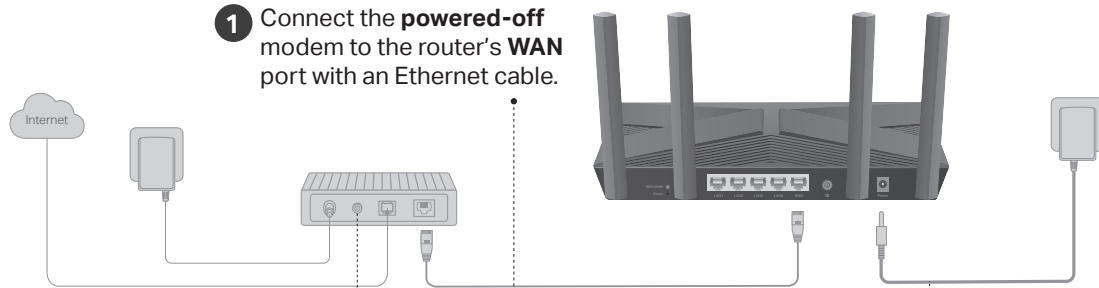


- **Unplug the power** to turn off your modem, if any, and remove the backup battery if it has one.
- Place the router horizontally and orient the antennas vertically.

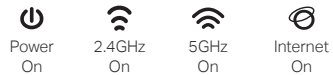


If your internet connection is through an Ethernet cable directly from the wall instead of through a DSL / Cable / Satellite modem, connect the Ethernet cable to the router's WAN port, and then follow steps 3 and 4 to complete the hardware connection.

\*Image may differ from actual product.



- 2 Power on the modem, and then wait about **2 minutes** for it to restart.
- 3 Connect the power adapter to the router and turn on the router.
- 4 Verify that the hardware connection is correct by checking the following LEDs.



Note: If the 2.4GHz LED and 5GHz LED are off, press and hold the WPS/Wi-Fi button on the back for more than 2 seconds, then release the button. Both the LEDs should turn solid on.

# 2 Set Up the Network

## Method 1: Via a Web Browser

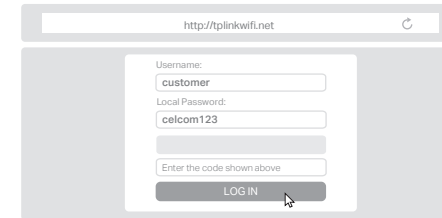
1. Connect your device to the router wirelessly or with an Ethernet cable.

The default wireless network names (SSIDs) and password are printed on the label at the bottom of the router.



2. Launch a web browser, and enter <http://tplinkwifi.net> or <http://192.168.1.1> in the address bar. Enter the username **customer** and password **celcom123** to log in.

Note: If the login window does not appear, please refer to **Q1 of Need Help?** in this guide.

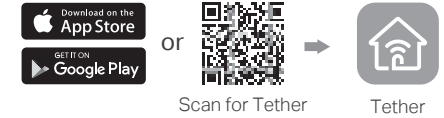


3. Follow the step-by-step instructions to set up the internet connection.

😊 Enjoy the internet !

## Method 2: Via TP-Link Tether App

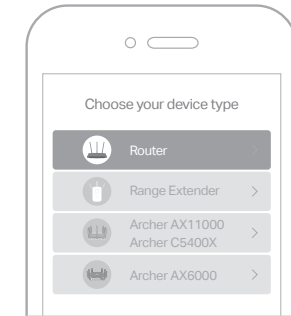
1. Download the Tether app.



2. Open the Tether app and log in with your TP-Link ID.

Note: If you don't have an account, create one first.

3. Tap the **+** button in the Tether app and select **Router > Wireless Router**. Follow the steps to complete the setup and connect to the internet.



😊 Enjoy the internet !

## Button Explanation

### WPS/Wi-Fi Button

Press the button for 1 second, and immediately press the WPS button on your client to start the WPS process.

Press and hold the button for more than 2 seconds to turn on or off the wireless function of your router.

### Reset Button

Press and hold the button until all LEDs turn on to reset the router to its factory default settings.

## Safety Information

- Keep the device away from water, fire, humidity or hot environments.
- Do not attempt to disassemble, repair, or modify the device. If you need service, please contact us.
- Do not use any other chargers than those recommended.
- Do not use damaged charger or USB cable to charge the device.
- Do not use the device where wireless devices are not allowed.
- Adapter shall be installed near the equipment and shall be easily accessible.

Please read and follow the above safety information when operating the device. We cannot guarantee that no accidents or damage will occur due to improper use of the device. Please use this product with care and operate at your own risk.



To communicate with TP-Link users or engineers, visit <https://community.tp-link.com> to join TP-Link Community.



For technical support, replacement services, user guides and more, please visit <https://www.tp-link.com/support>



Email [techwriter@tp-link.com.cn](mailto:techwriter@tp-link.com.cn) to give suggestions.

## Need Help?



### Q1. What should I do if I can't access the web management page?

- Reboot your router and try again.
- If the computer is set to a static IP, change its settings to obtain an IP address automatically.
- Verify that <http://tplinkwifi.net> is correctly entered in the web browser. Alternatively, enter <http://192.168.1.1> or <http://192.168.0.1> in the web browser.
- Use another web browser and try again.
- Disable and enable the network adapter in use.

### Q2. What should I do if I can't access the internet?

- Reboot your modem and router, then try again.
- Check if the internet is working normally by connecting a computer directly to the modem via an Ethernet cable. If it is not, contact your internet service provider.
- Log in to the web management page of the router, and go to the **Network Map** page to check whether the internet IP address is valid or not. If it is, go to the **Internet** page to set up the internet connection again; otherwise, check the hardware connection.

### Q3. What should I do if I forget my wireless password?

- If you have not changed the default wireless password, it can be found on the label at the bottom of the router.
- Connect a computer directly to the router using an Ethernet cable. Log in to the router's web management page at <http://tplinkwifi.net>, and go to the **Wireless** page to retrieve or reset your wireless password.

### Q4. What should I do if I forget my web management page account?

- If you have not changed the default username and password, they can be found on the label at the bottom of the router.
- Alternatively, press and hold the Reset button on the back until all LEDs turn on. Then visit <http://tplinkwifi.net>, and use the default username and password to log in.

# Quick Installation Guide



AX1500 Wi-Fi 6 Router

