



Affordable. Reliable. Home Improvement.

**AQUARIUM WAVE MAKER WITH
CONTROLLER**

MODEL: JDP-3500/JDP-6000/JDP-10000

Technical Support and E-Warranty Certificate
www.vevor.com/support

VEVOR

Affordable. Reliable. Home Improvement.

AQUARIUM WAVE MAKER
WITH CONTROLLER

MODEL:JDP-3500/JDP-6000/JDP-10000



The picture is for reference only, please refer to the actual object

This is the original instruction, please read all manual instructions carefully before operating. VEVOR reserves a clear interpretation of our user manual. The appearance of the product shall be subject to the product you received. Please forgive us that we won't inform you again if there are any technology or software updates on our product.



1.PROLEGOMEAN

Thank you for choosing our product. Please read the following operating instructions and familiarize yourself with the equipment before placing it into service. Correct and safe use of the system requires strict compliance with the safety instructions. For safety concerns children and young people under 16 years old, as well as people that cannot recognize potential hazards, or people that are not familiar with these instructions, may not use this device.



2.SAFETY INSTRUCTIONS

1. For your own safety, please contact an electrical specialist case of questions and problems!
2. Do not connect the power supply when the all parts not installed.
3. Plug in the pump only to a power receptacle with ground contact. This type of outlet must have been set up according to the respective national directives(vde.en...iec, etc.) insure that the conductor extends all the way to the pump.
4. Make sure the voltage in the pump is the same with the actual power supply.
5. Electrical installations on garden ponds must correspond to the international and national installation directives.
6. Only operate the pump if no one in the water!
7. Do not carry or pull the pump by the connecting cable, avoid the cable over heat, greasy or touch acute angle.
8. The pump may not be operated if the cable or the housing are defective!
9. Never displace any liquids other than water.
10. Attention: the pump will automatically stop working if overload or without water.
11. The controller is not the water-proof design, so put it in dry and ventilated place when use.



3.USING APPLICATIONS

Apply to ponds, rocky bourn, aquarium tanks with water recycling equipment matching.

4.FEATURE

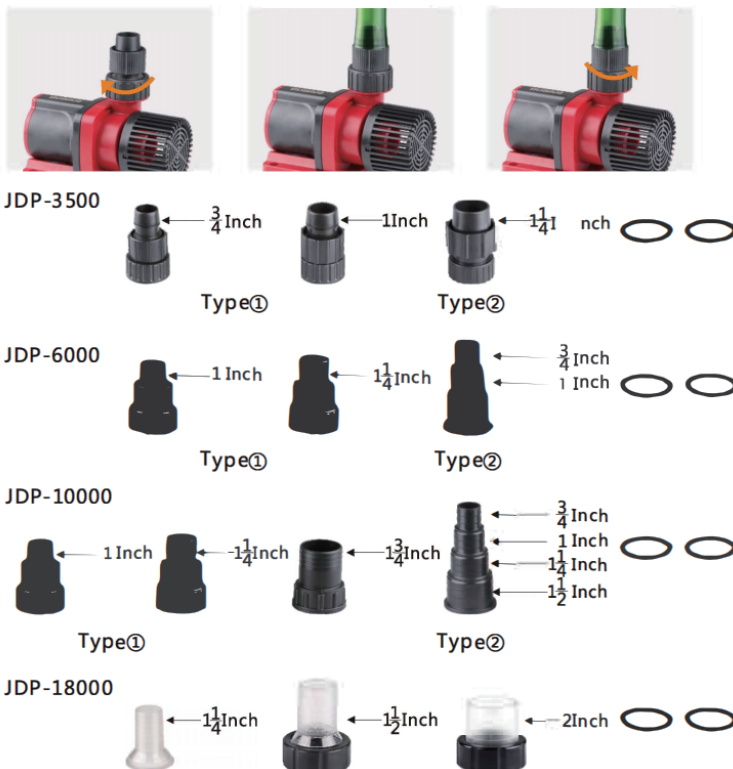
1. Multi function intelligent control layout, can adjust flow and power.
2. The water pump uses the latest three-phase power with brushless and sensorless control technology, energy saving up to 50%.
3. Low-voltage 24V, safe and converse electricity.
4. Using closed impeller design can be economically efficient to improve lift and output.
5. Super silence, can be used both in fresh and sea water.
6. Use ceramic shaft, wear resistance, no rust.
7. Long service life, no copper element.
8. The outlet realize multistage over suitable for a variety of pipe diameter connection.
9. Separation of electric drive more safe and stable.
10. The locked-rotor protection function(immediately cut off power after impeller jammed.)



5.INSTALLATION

1. Notify your dealer immediately if there are external damages.
2. Compare the line voltage(V) and frequency(HZ) of your electrical circuit with the data on the model plate, these data must be matched.

3.The product has two types of outlet, show as below:



Type①: Tighten the nut in the clockwise direction, then put on the hose, then tighten and turn the nut counterclockwise to lock the hose.

Type②: Third(forth) part can control the output of connecting pipe, also can meet customers' requirement to connect the different sizes of hosepipe. To reduce the loss of flow, please cut out the useless portion of the pipe, and then attach the hosepipe. Please check the power supply on the plate to ensure it is the same as you use.

4. Attention: the pump must below the level of water 20cm at least, the placement surface must firm and maintain the pump level.

5. Do not place the pump directly in the pond floor mud, place it on a raised surface.

6. Connect the pump with controller of three core wire, lock the nut. See pic 1:

7. Connect the power adapter and the controller's DC socket. See pic2

8. Connect the power adapter and three pins plug. See pic3.



9. Connect the power supply of the controller.

6.CONTROLLER USE

The controller is consist of hook, panel, touch button, fixed foot.



1、 On/off

After turning on the power, click  to control the pump.

Tips:if not used for a long time, pls cut off the power.

2、 Adjust the gear


Click +,- to regulate pump performance. Refer to parameter table for specific performance parameters.

SPECIFICATION

Model	JDP-3500	JDP-6000	JDP-10000
Input	AC100-240V 50/60Hz		
Power	30W	60W	100W
Output	DC24V 2.5A	DC24V 4.0A	DC24V 6.35A
Q.max	925GPH	1585GPH	2642GPH
H.max	11.5Ft	16Ft	19.7Ft



3. Feeding

Click  once for turning on the feeding function after 15 mins; click twice for turning on after 60 mins. Click three times for turning off.

4. Automatic memory

After the controller is switched off or accidental power failure, it will resume the last working state after restore the power.

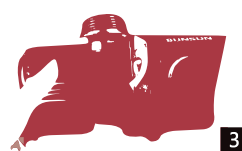
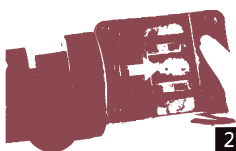
5. LED indicator light

5 LED lights will flash when the pump runs out of water. The power will be off automatically after two minutes and restart after 5 seconds. Repeat three restarts, the power will be cut off permanently, 4 LED lights will flash when the pump blocked, then automatic power-off for protection. Repeat three restarts, the power will be cut off permanently, Must eliminate abnormal to restore LED lights.

7. MAINTENANCE/CLEANING



The pump running after a period of time, the rotor internal accumulation of stolen good. If it is not clean long time, not only affect the normal work of the water pump, but also damage the pump. Regular cleaning and maintenance the inside is necessary. Please cut off the power when clean it, cleaning tips are as follows:



1. Rotating remove the filter case as pic 1, pic 2 is showed when finished.

2. According to the direction of the arrow showed as pic 3, push the insurance clasp, rotating remove the impeller chamber, pic 4 is showed when finished.

3. Remove the rotor combination when you clean or change.

4. The installation position of the O-ring.

Attention: if the pump is not used for a long time, please pull out the pump, it is better to run the pump in the clean water for a short time. And then rinse with clean water. Clean and make sure the pump is dry, put it in a stable place.

If the temperature is below 0 degree, the water in the pump should be discharged immediately. In order to prevent freezing damage of water pump.

8. LED flashing instructions



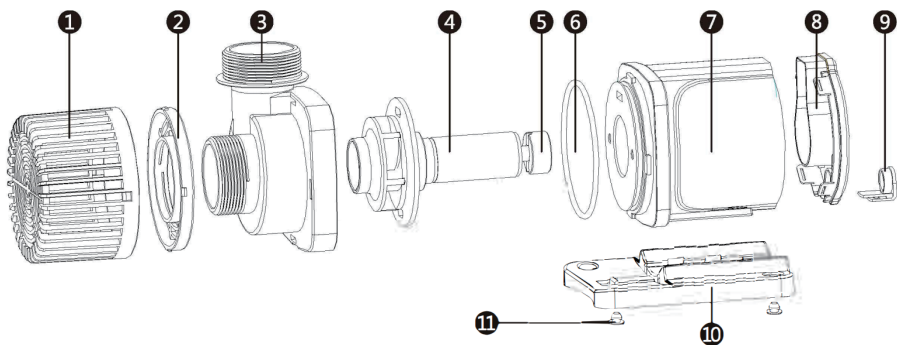
Pump State	LED Display	State	Eliminate Method
Long time idling	1.2.3.4.5	Error	Check that the pump is running without water or The air in the pipe is not discharged
stuck	2.3.4.5	Error	Check that the pump is jammed
Overhigh voltage	3.4.5	Error	Check the input voltage
Low voltage	4.5	Error	Check the input voltage
Abnormal operating current	5	Error	Check the controller

9.TROUBLESHOOTING



Malfunction	Cause	Solving methods
Pump do not run	No power supply Burning machine Impeller stall Run without water Not connected with the controller The controller is damaged	Connect power Change pump Clean and relink to power Fill with water and relink to power Relink the controller Change the controller
Pump noise	Dirty inside or shaft break Ceramic shaft wear	Clean pump or change rotor and ceramic shaft
Pump water shortage	Damage of the impeller Inlet and outlet obstruction Filter case obstruction Under voltage	Change rotor combination Clean and relink to power Adjust the voltage

10.STRUCTURE



NO.	NAME	NO.	NAME	NO.	NAME
1	Filter case	5	Ceramic bearing components	9	Line plug
2	Draining trays connection	6	O-ring	10	Base support
3	Impeller Chamber	7	Shell	11	Rubber foot-pad
4	Rotor Combination	8	Rear cover		

11.WEARING PARTS

- 1.Rotor Combination.
- 2.Ceramic Shaft.

**FCC Information:**

CAUTION: Changes or modifications not expressly approved by the party responsible for compliance could void the user's authority to operate the equipment!

This device complies with Part 15 of the FCC Rules. Operation is subject to the following two conditions:

- 1) This product may cause harmful interference.
- 2) This product must accept any interference received, including interference that may cause undesired operation.

WARNING: Changes or modifications to this product not expressly approved by the party responsible for compliance could void the user's authority to operate the product.

Note: This product has been tested and found to comply with the limits for a Class B digital device pursuant to Part 15 of the FCC Rules. These limits are designed to provide reasonable protection against harmful interference in a residential installation.

This product generates, uses and can radiate radio frequency energy, and if not installed and used in accordance with the instructions, may cause harmful interference to radio communications. However, there is no guarantee that interference will not occur in a particular installation. If this product does cause harmful interference to radio or television reception, which can be determined by turning the product off and on, the user is encouraged to try to correct the interference by one or more of the following measures.

- Reorient or relocate the receiving antenna.
- Increase the distance between the product and receiver.
- Connect the product to an outlet on a circuit different from that to which the receiver is connected.
- Consult the dealer or an experienced radio/TV technician for assistance.



Technical Support and E-Warranty Certificate
www.vevor.com/support