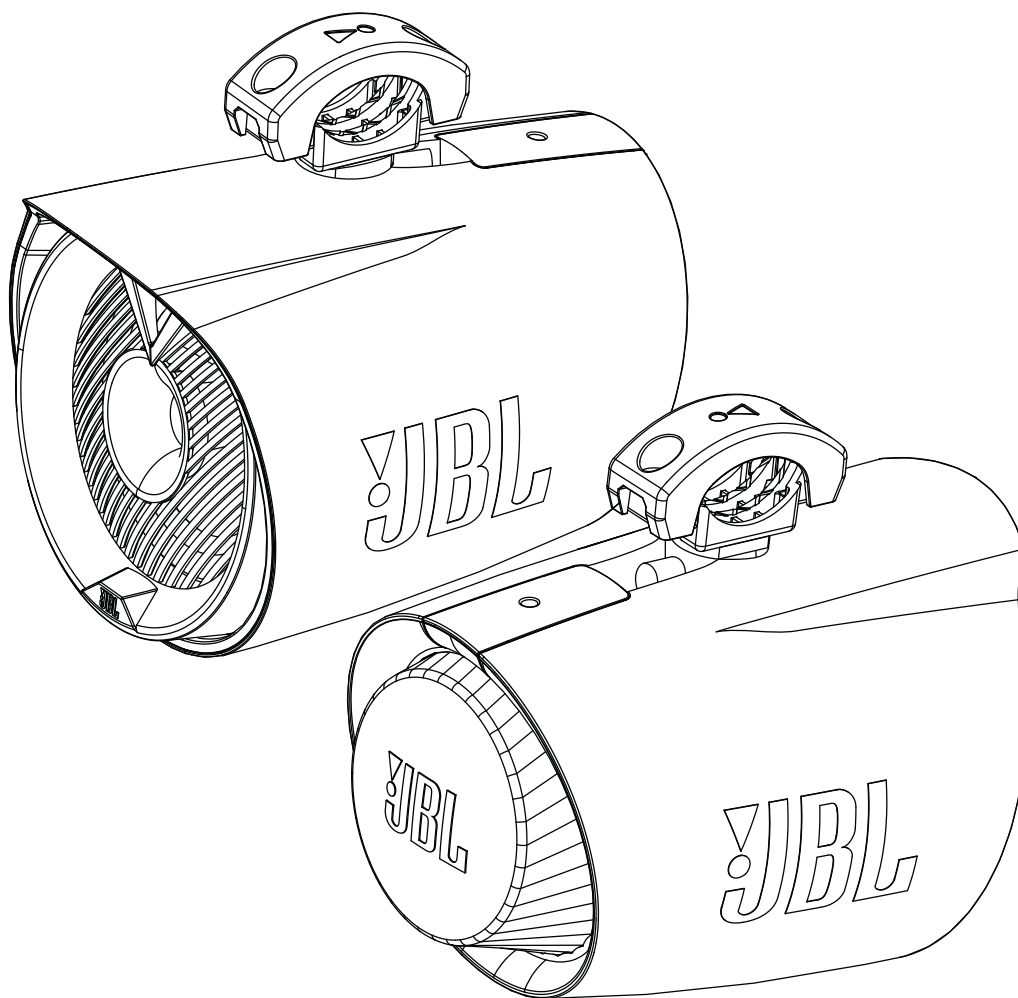




# JBL Tower X Marine 10" Speaker



**JBL Tower X Marine 10" Speaker Installation Guide**

**EN**

**Guide d'installation de l'enceinte marine 10" JBL Tower X**

**FR**

**Guía de instalación del altavoz JBL Tower X Marine 10"**

**ES**

# JBL Tower X Marine 10" Speaker

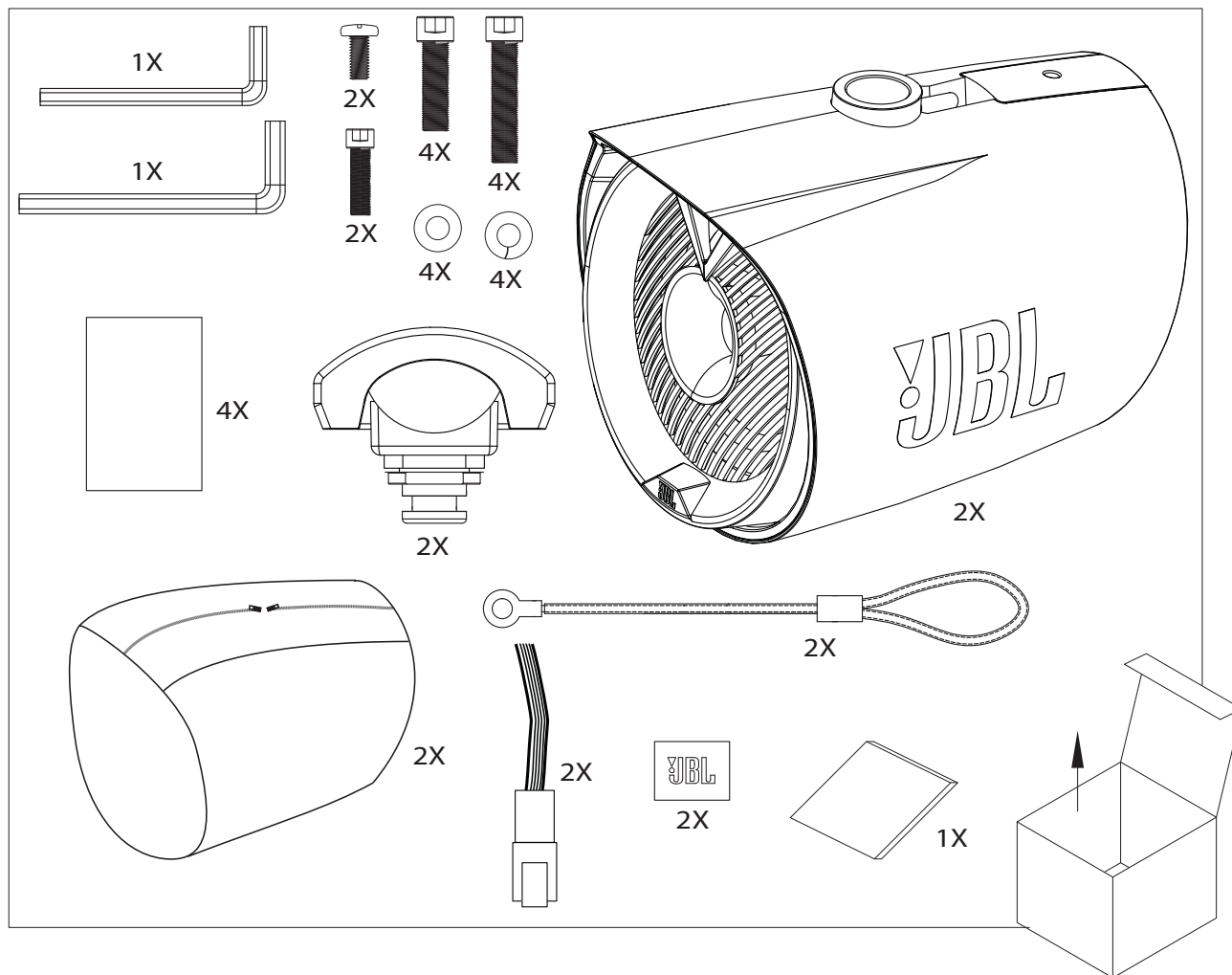
## THANK YOU FOR YOUR PURCHASE . . .

Your JBL product has been designed to provide you with the performance and ease of operation you would expect from JBL.

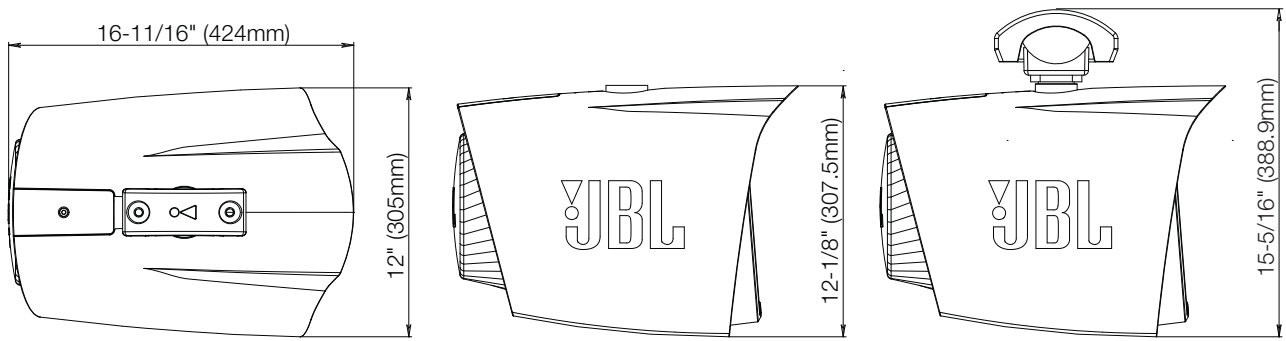
## ABOUT THE MANUAL

This manual describes general installation guidelines. However, please note that proper installation of marine audio components requires qualified experience. If you do not have the knowledge and tools to successfully perform this installation, we strongly recommend consulting an authorized JBL dealer about your installation options. Keep all instructions and sales receipts for reference.

## WHAT'S IN THE BOX



## DIMENSIONS

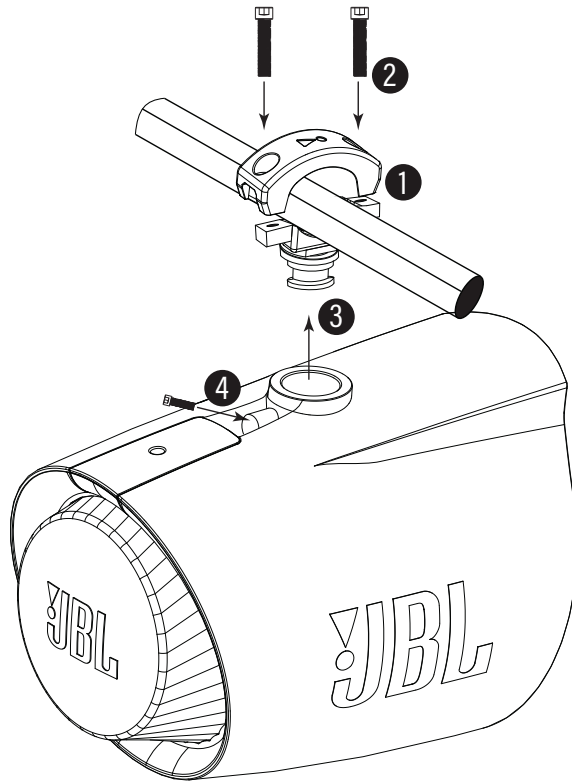


## MOUNTING

### Mounting the speaker

1. Place the clamp around the horizontal bar of the tower.
2. Use the included M8 bolts to secure the clamp; insert the bolts from the top and turn clockwise with the included hex key to tighten. For a secure fit, use the included rubber mats between the clamp and the bar.
3. Slide the speaker onto the clamp from below.
4. Secure the speaker onto the clamp using the included M6 bolt; insert the bolt into the hole inside the wiring channel at the base of the mounting sleeve. Turn clockwise with the included hex key to tighten.

**NOTE:** Be sure to align the bottom of the clamp with the hole through which speaker and LED wires pass into the wake tower bar. Feed any remaining wire into the bar to prevent pinching.



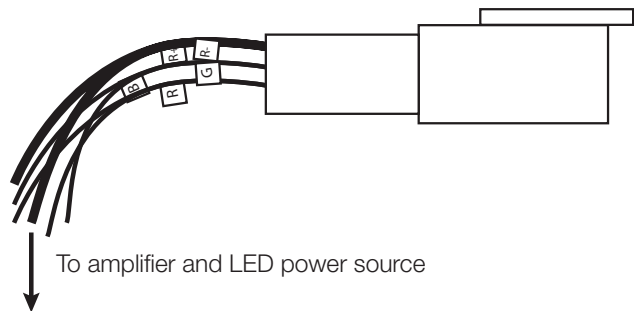
EN

### Swiveling the speaker

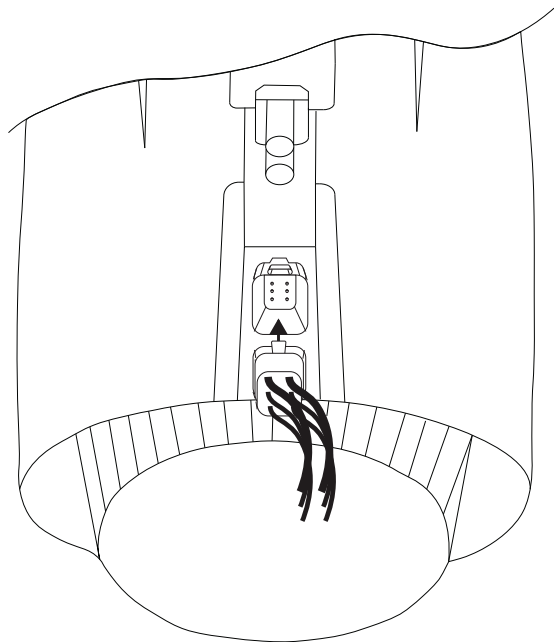
Loosen the mounting bolt. Swivel speaker to the desired angle (up to 360°). Tighten the bolt to secure in place.

Wiring the speakers

- 1. To access the speaker plug on the tower speaker, remove the panel on the top of the speaker housing, behind the mounting bracket.
- 2. Connect the speaker wires of the included speaker connectors to the speaker output wires of your head unit or amplifier. Be sure to observe proper polarity. Solder or crimp-connect to secure.
- 3. Connect the RGB LED wires of the included speaker connector to a 12-volt power and ground source, such as an LED controller (sold separately). Be sure to observe proper polarity and color-matching.



- 4. Connect the speaker connector to the plug in the speaker housing that was exposed in step one.



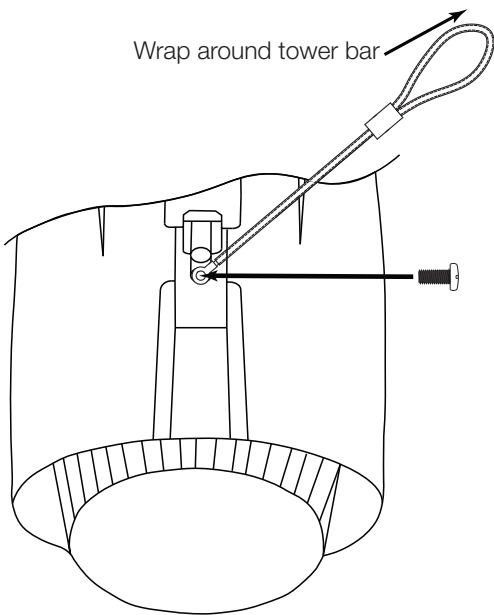
If hardwiring the LEDs directly to your power source, you can choose the color of the LEDs by connecting the black wire to the positive (+12V) terminal, and the appropriate R, G, and/or B single wire or combination of wires to the negative (-) terminal.

There are 7 possible colors, depending on the wiring configuration you choose:

Wire connected to positive (+12V) terminal	Wire connected to negative (-) terminal	Color produced
Black	Red	Red
	Green	Green
	Blue	Blue
	Red + Green	Yellow
	Red + Blue	Purple
	Blue + Green	Aquamarine
	Red + Blue + Green	White

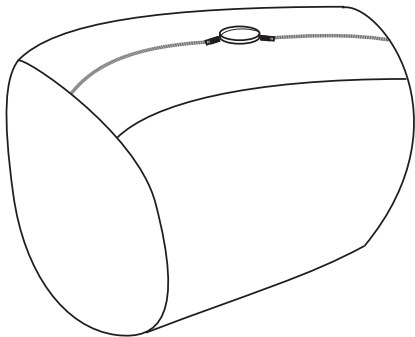
Attaching the safety strap

To keep the speaker from falling when adjusting it, use the included safety strap. Wrap the loop around the horizontal bar of the wake tower, then secure the strap to the speaker by threading the included hex screw through the strap's ring, and screwing it into the lower post in the wire channel.



Protecting your speaker from the elements

When not in use, you can protect your speaker using the included neoprene bag. Slide the bag over the speaker, and close the zipper to secure in place. You can use the bag whether the speaker is mounted or unmounted.

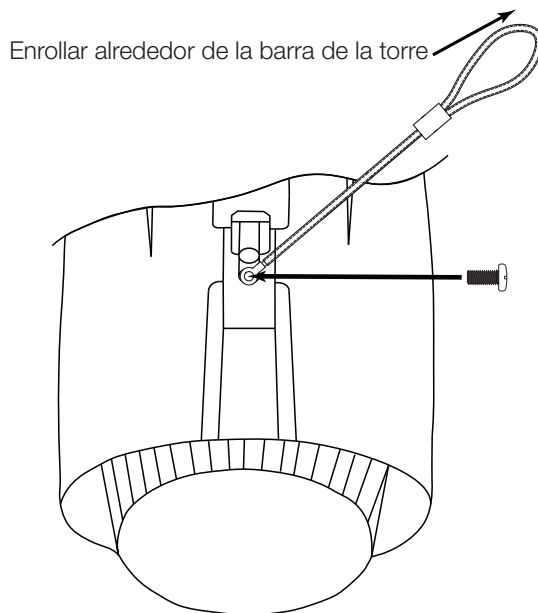


Specifications

Continuous power handling	250 watts RMS
Peak power handling	750 watts
Frequency response	35 Hz – 20 kHz
Nominal impedance	4 ohms
Sensitivity @ 2.83V	94 dB
Tweeter	1-3/8" (35mm) titanium horn
Voice coil diameter	2" (50mm)
Adjustable bar diameter	1-3/4" (44.5mm) – 3" (76.2mm)

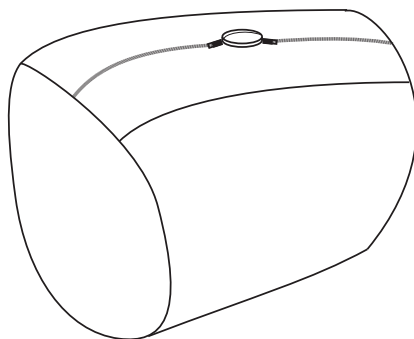
## Instalar la correa de seguridad

Para evitar que el altavoz se caiga al ajustarlo, utiliza la correa de seguridad incluida. Enrolla el bucle alrededor de la barra horizontal de la torre de estela y sujeta la correa al altavoz pasando el tornillo hexagonal incluido por el anillo de la correa y atornillándolo al poste inferior del canal para cables.



## Proteger al altavoz de los elementos

Mientras no utilizas el altavoz, puedes protegerlo con la bolsa de neopreno incluida. Desliza la bolsa por encima del altavoz y cierra la cremallera para sujetarla. Puedes usar la bolsa tanto si el altavoz está montado como si está desmontado.



## Especificaciones

<b>Capacidad de manejo continuo de potencia</b>	250 W RMS
<b>Capacidad de potencia pico</b>	750 W
<b>Intervalo de frecuencias</b>	35 Hz – 20 kHz
<b>Impedancia nominal</b>	4 Ohm
<b>Sensibilidad a 2,83 V</b>	94 dB
<b>Altavoz de agudos</b>	Bocina de titanio de 1-3/8" (35mm)
<b>Diámetro de la bobina de voz</b>	2" (50 mm)
<b>Diámetro de la barra ajustable</b>	44,5 mm – 76,2 mm

ES



HARMAN International Industries,  
Incorporated 8500 Balboa Boulevard,  
Northridge, CA 91329 USA  
[www.jbl.com](http://www.jbl.com)

© 2021 HARMAN International Industries, Incorporated. All rights reserved.  
JBL is a trademark of HARMAN International Industries, Incorporated,  
registered in the United States and/or other countries. Features, specifications  
and appearance are subject to change without notice.



# TOWER X MARINE SPEAKERS

10" (250mm) enclosed two-way marine audio tower speaker with 1-3/8" (35mm) horn loaded compression tweeter



## Rock the boat with the JBL Pro Sound.

The JBL Tower X Marine Speaker system is ready to take your next outdoor adventure to the next level. The fully marinized speakers deliver a JBL pro sound experience complete with RGB lighting to bring it to life. Their rigid Polypropylene long-throw woofer cones deliver great bass to ensure you never miss a beat, coupled with a titanium horn-loaded compression tweeter and fidelity for accurate reproduction. The woofer and tweeter assembly incorporates a patent pending design that helps to project the sound over the stern of the boat, directly to the wave rider's sweet spot, while providing great sound inside the boat.

## Features

- ▶ Patent Pending Design
- ▶ Marine Rated with Integrated Waterproof Connector
- ▶ High Output Design
- ▶ Multi-color RGB Lighting
- ▶ 360-degree Low-Profile Bracket Design
- ▶ Individually Voiced
- ▶ Harman Standard Reliability Testing
- ▶ JBL Industrial Design





# TOWER X MARINE SPEAKERS

10" (250mm) enclosed two-way marine audio tower speaker with 1-3/8" (35mm) horn loaded compression tweeter

## Features and Benefits

### Patent Pending Design

JBL Tower X Marine Speaker system incorporates a patent pending angled baffle speaker design that directs the transducers to the rider's listening position instead of the water at the stern of the boat. This provides the rider with excellent sound quality, reduces the smearing effect caused by your music reflecting off the water, and provides an enjoyable listening experience for everyone else inside the boat.

### Marine Rated with Integrated Waterproof Connector

For JBL, failure is not an option. Extreme care was taken to engineer marine-grade materials & components that overcome the demands of the harsh marine environment. We will not rest until we are sure your product will survive for years to come.

### High Output Design

At JBL, we want to deliver a concert to the water. The JBL Tower X MT10HLW includes an 10-inch long-throw polypropylene woofer cone and rubber surround, coupled with a 1-inch horn-loaded titanium compression tweeter to make sure you get the deep bass, smooth highs, superior sound quality and extreme power handling you expect.

### Multi-color RGB Lighting

JBL Tower X speakers come standard with multi-color RGB LED lighting engineered to withstand the harshest environment and keep the party going all night long. Hard-wire directly to the speaker wiring to choose from one of seven color options out of the box, or connect to your existing RGB lighting control system to operate seamlessly with your existing RGB components.

### 360-degree Low-Profile Bracket Design

JBL Tower X Marine 10-inch Speakers feature a rugged & low-profile 360-degree rotating bracket design adjustable to 1.75in. to 3in. bar sizes. An added bonus is the ability to thread your wiring directly from the bar through the bottom bracket and into the speaker enclosure to limit exposed wiring and allow for a clean install.

### Individually Voiced

For many brands, off-the-shelf speakers and a cursory approval of frequency response curves are good enough. That's not the case with JBL. We don't only listen to our speakers against the competition — we voice them against each other to ensure each line has the consistent JBL sound signature that's known and sought out by those who care about their audio. This is just part of an extensive development process undertaken by some of the best transducer engineers in the world to provide the finest listening experience at any price point.

### Harman Standard Reliability Testing

JBL speakers have to undergo a testing process that would destroy lesser speakers. JBL freezes them, bakes them, shakes them, and drives them at full power for days at a time. In the case of our marine speakers, we add an intense salt spray and UV test to ensure that they provide years of enjoyment without missing a beat.

### JBL Industrial Design

At JBL, we take pride in our iconic design heritage. Our design team took great care to ensure that your JBL Tower X Marine Speakers will look great on your boat. The smooth curve of the enclosure body, angular grille face design with embedded JBL horn logo, and "jet engine" component at the rear of the enclosure all tie together with our classic, current and future design language while concentrating on the design of your boat.

## What's in the box:

### Tower X Marine MT10HLW

2x Enclosed speaker assembly

2x Two-piece bracket assembly

4x Rubber pad

Mounting hardware:

2x hex head screws, 2x M6 bolts,  
4x M8 x 35mm bolts, 4x M8 x 55mm bolts,  
4x Flat-washers, 4x Lock-washers,  
2x M8 hex-keys, 2x M6 hex-keys

2x Speaker/RGB cable

2x Security cable

2x Neoprene cover

2x JBL sticker

Quick Start Guide

## Technical Specifications

**10" (250mm) enclosed two-way  
marine audio tower speaker with  
1-3/8" (35mm) horn loaded  
compression tweeter**

Power Handling: 250Wrms, 750W peak

Sensitivity (@ 2.83V): 92dB

Frequency Response: 35Hz – 20kHz

Voice Coil Diameter: 2in. (50mm)

Impedance: 4 ohms

Adjustable bar diameter from 1.75in – 3in.  
(44.5mm – 76.2mm)

