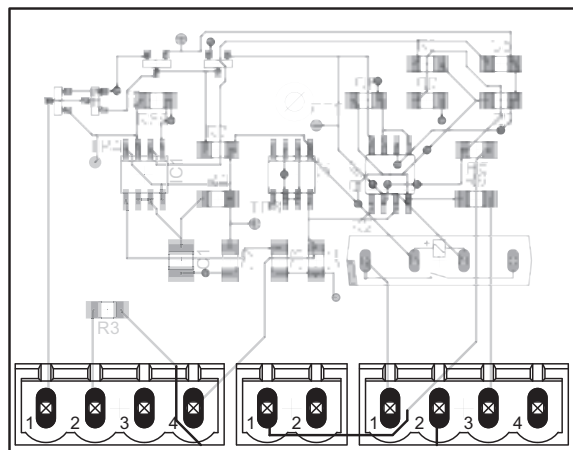


B680H

Sequenced Access Interface



FAAC

DESCRIPTION

The FAAC Sequenced Access Interface allows the connection of the B680H barrier arm operator to a gate operator so that they will work in tandem, the fast moving barrier arm operator that controls the flow of traffic during high traffic periods, and the slower moving gate operator insuring security during low traffic periods.

The interface is implemented in a small PCB housed in a box that can be easily clipped on the standard DIN rail in the B680H. The electrical connections are made through three terminal blocks: one connects to the B680H, one connects to the gate operator and one connects to the access control device which has just to provide a N.O. dry contact. (Fig. 1) The Interface board will take power from the B680H accessories power supply.

OPERATIONS

A pulse from the access control device to the FAAC Sequenced Access Interface will send an open signal to the gate operator causing it to open. The B680H's arm will not raise though, only when the gate operator reaches its full open limit switch, the interface will send an open pulse to the B680H, which will raise its arm.

As long as the gate operator is in the full open position, any additional open pulse from the access control device will be sent to both the B680H and the gate operator keeping the entrance open. If no cars are going through for some time, the gate operator will start to close. At that point any access control pulse will only go to the gate operator, and only when it has reached the full open position the barrier gate arm will raise.

Note:

For proper operation the system must be setup so that the B680H will always close before the gate operator. This requires setting the pause time on the B680H at a lower value that the auto close timer on the gate operator.

WIRING

Please refer to Fig. 2 for the complete wiring schematic.

Note: The Gate Operator will be allowed to close only if the B680H status is closed (FCC engaged) through the use of the operator's Shadow input. Make sure to install safety devices so that if a car stops under the arm the B680H will not close and so the Gate Operator will keep the gate open.

FAAC Sequenced Access Interface

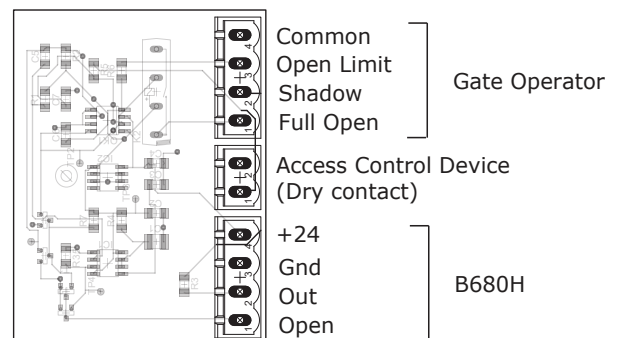


Fig. 1

PROGRAMMING

Setup the B680H as follows:

- Program Logic "A" with pause time shorter than the time to close on the gate operator
(Basic Configuration: LO → A)
- Set Output 1 as FCC engaged
(Advanced configuration: o1 → 17)

NOTE: The OUT1 polarity must be configured according with the Shadow input of the Gate Operator:

- Advanced configuration: P1 → y for NO Shadow input
- Advanced configuration: P1 → no for NC Shadow input

For the gate operator programming refer to the manufacturer's instructions.

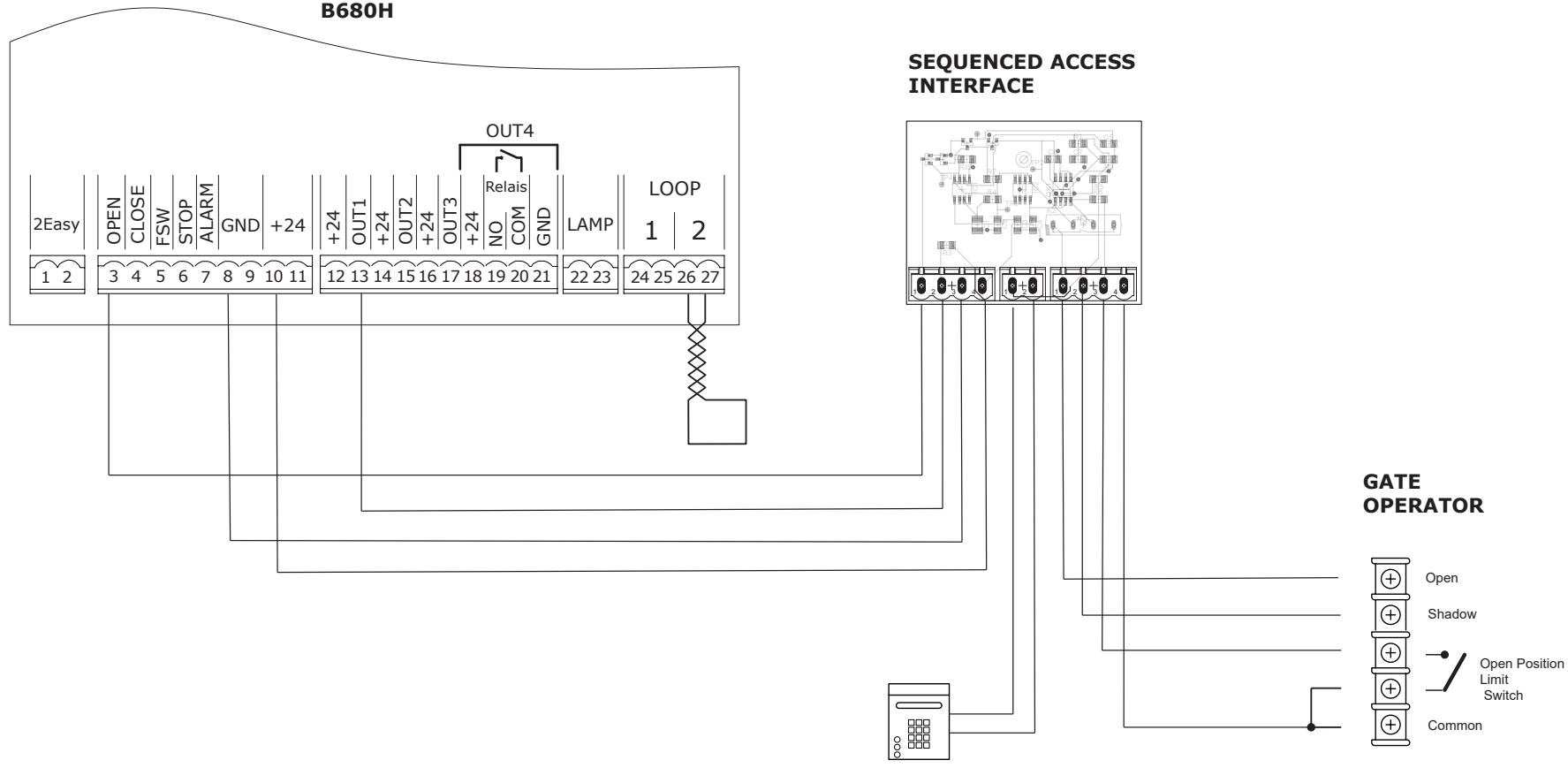


Fig. 2

LIMITED WARRANTY

To the original purchaser only:

FAAC International, Inc., warrants, for twenty-four (24) months from the date of invoice, the gate operator systems and other related systems and equipment manufactured by FAAC S.p.A. and distributed by FAAC International, Inc., to be free from defects in material and workmanship under normal use and service for which it was intended provided it has been properly installed and operated.

FAAC International, Inc.'s obligations under this warranty shall be limited to the repair or exchange of any part of parts manufactured by FAAC S.p.A. and distributed by FAAC International, Inc. Defective products must be returned to FAAC International, Inc., freight prepaid by purchaser, within the warranty period. Items returned will be repaired or replaced, at FAAC International, Inc.'s option, upon an examination of the product by FAAC International, Inc., which discloses, to the satisfaction of FAAC International, Inc., that the item is defective. FAAC International, Inc. will return the warranted item freight prepaid. The products manufactured by FAAC S.p.A. and distributed by FAAC International, Inc., are not warranted to meet the specific requirements, if any, of safety codes of any particular state, municipality, or other jurisdiction, and neither FAAC S.p.A. or FAAC International, Inc., assume any risk or liability whatsoever resulting from the use thereof, whether used singly or in combination with other machines or apparatus.

Any products and parts not manufactured by FAAC S.p.A. and distributed by FAAC International, Inc., will carry only the warranty, if any, of the manufacturer. This warranty shall not apply to any products or parts thereof which have been repaired or altered, without FAAC International, Inc.'s written consent, outside of FAAC International, Inc.'s workshop, or altered in any way so as, in the judgment of FAAC International, Inc., to affect adversely the stability or reliability of the product(s) or has been subject to misuse, negligence, or accident, or has not been operated in accordance with FAAC International, Inc.'s or FAAC S.p.A.'s instructions or has been operated under conditions more severe than, or otherwise exceeding, those set forth in the specifications for such product(s). Neither FAAC S.p.A. nor FAAC International, Inc., shall be liable for any loss or damage whatsoever resulting, directly or indirectly, from the use or loss of use of the product(s). Without

limiting the foregoing, this exclusion from liability embraces a purchaser's expenses for downtime or for making up downtime, damages for which the purchaser may be liable to other persons, damages to property, and injury to or death of any persons.

FAAC S.p.A. or FAAC International, Inc., neither assumes nor authorizes any person to assume for them any other liability in connection with the sale or use of the products of FAAC S.p.A. or FAAC International, Inc. The warranty herein above set forth shall not be deemed to cover maintenance parts, including, but not limited to, hydraulic oil, filters, or the like. No agreement to replace or repair shall constitute an admission by FAAC S.p.A. or FAAC International, Inc., of any legal responsibility to effect such replacement, to make such repair, or otherwise. This limited warranty extends only to wholesale customers who buy directly through FAAC International, Inc.'s normal distribution channels. FAAC International, Inc., does not warrant its products to end consumers.

Consumers must inquire from their selling dealer as to the nature and extent of that dealer's warranty, if any. This warranty is expressly in lieu of all other warranties expressed or implied including the warranties of merchantability and fitness for use. This warranty shall not apply to products or any part thereof which have been subject to accident, negligence, alteration, abuse, or misuse or if damage was due to improper installation or use of improper power source, or if damage was caused by fire, flood, lightning, electrical power surge, explosion, wind storm, hail, aircraft or vehicles, vandalism, riot or civil commotion, or acts of God.