

READ ALL INSTRUCTIONS BEFORE INSTALLATION
INSTALL ACCORDING TO LOCAL INSTALLATION CODES

Caution: Turn power off

Warning: Risk of fire and shock

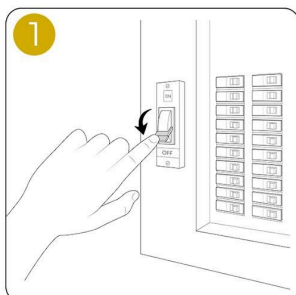
Product Variants

Vertical, Horizontal, 2-Gang

Package Contents

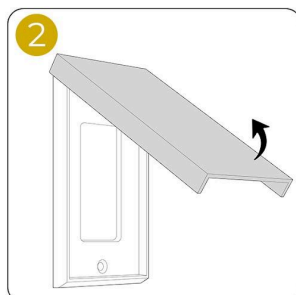
Low Profile Brass Cover

Stainless Steel Mounting Screws (2)

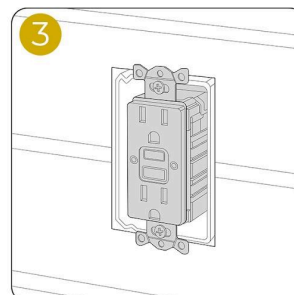


CAUTION: Turn power off.

Ensure that the power to the receptacle is shut off.



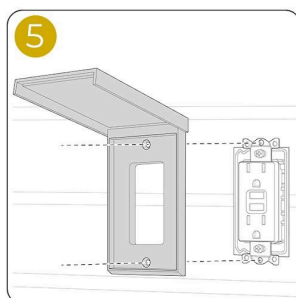
The cover is designed to be installed with the hinge at the top. Ensure the cover rotates upward during installation.



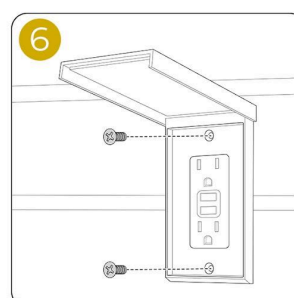
Only for use in flush mounted box or wall assembly.



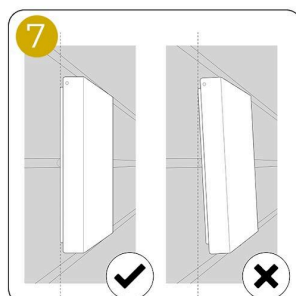
For irregular wall surfaces such as brick or stone, a bead of caulking (not included) may be used to seal the unit to the wall to prevent water intrusion.



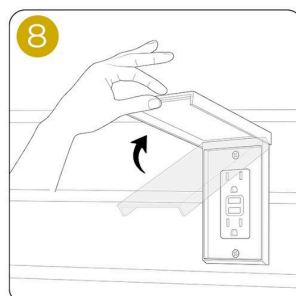
Place the cover over the receptacle and line up the mounting holes. The cover mounts to the outer set of holes on the receptacle.



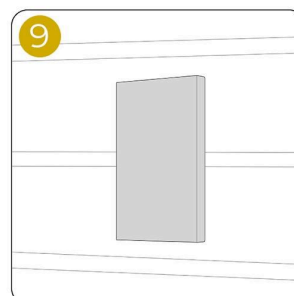
Use the provided stainless screws to attach the cover to the receptacle.



Ensure that the weather gasket is compressed consistently on the back of the cover creating a water tight seal. Do not over tighten the screws.



Test for smooth operation of the cover.



When the receptacle is not in use, always ensure that the cover lid is in the closed position.