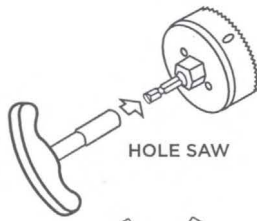


POWER OUTLET RELOCATOR

Installation Instructions

HS-PWRLOC01
HELIOS®

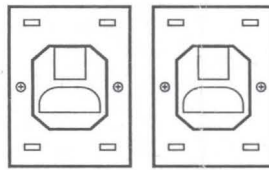
KIT CONTENTS:



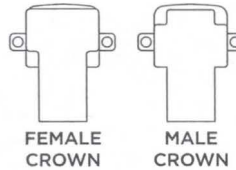
HOLE SAW



FISH TAPE
(10FT)

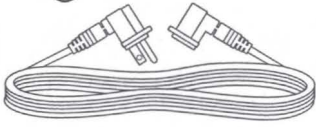


IN-WALL HOUSINGS



FEMALE
CROWN

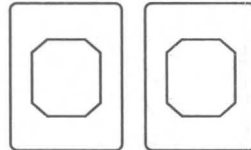
MALE
CROWN



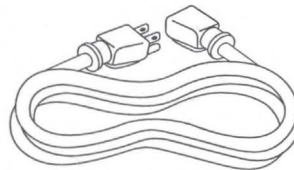
IN-WALL POWER CABLE (9FT)



SCREWS
(4)

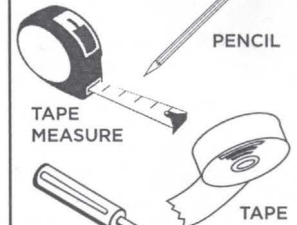


FASCIA HOUSINGS



POWER CABLE (6FT)

TOOLS NEEDED:



PENCIL

TAPE
MEASURE

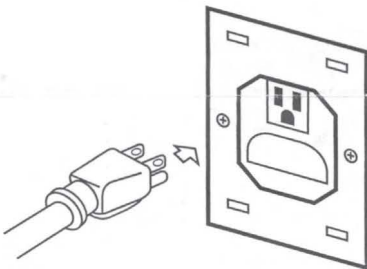


PHILLIPS
SCREWDRIVER

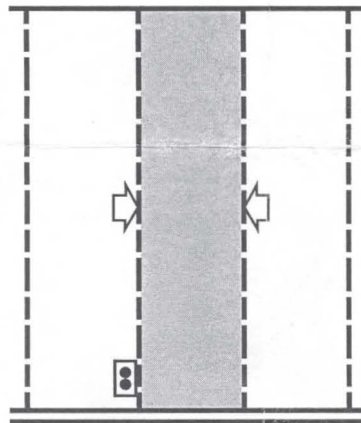


LEVEL

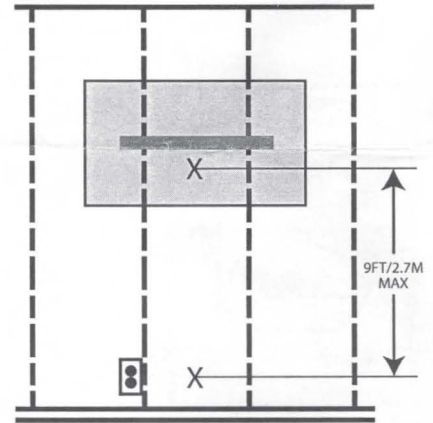
- 1** Check plug size from your TV



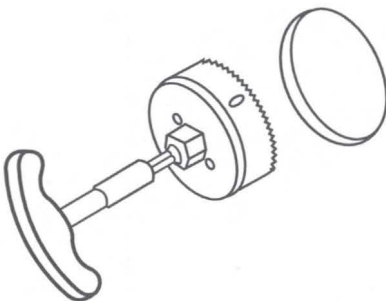
- 2** Center between studs



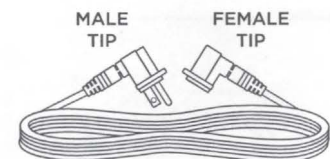
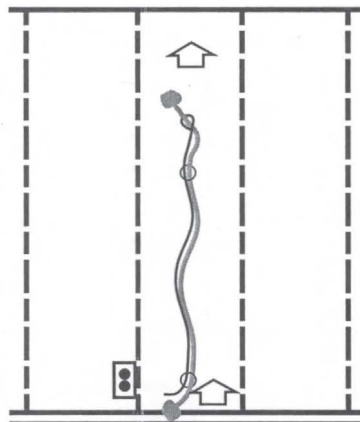
- 3** Measure and mark the location for holes with pencil



- 4** Drill holes with provided Hole Saw



- 5** Use Fish Tape to snake the In-Wall Power Cable into the wall with the **Female Tip at the top** and the **Male Tip at the bottom**. Use tape to secure the Fish Tape if needed.



MALE
TIP

FEMALE
TIP

NOTE: Snake any additional cables at this time.
Coax cable not included.

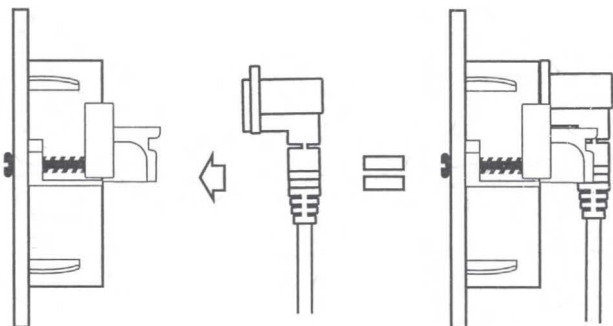


POWER OUTLET RELOCATOR

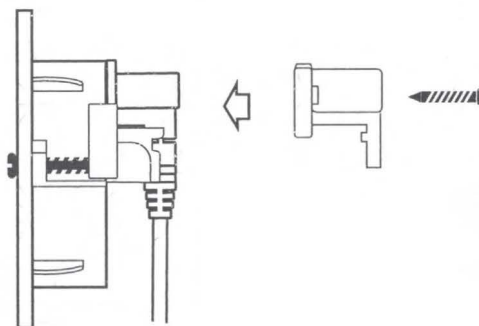
Installation Instructions continued

HS-PWRLOC01
HELIOS®

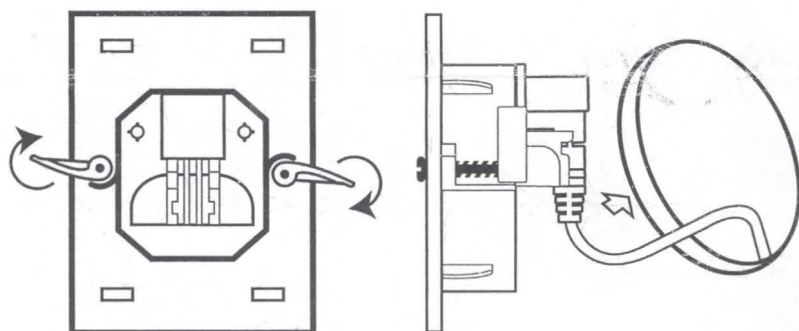
- 6** At the top, insert Female Tip into the back side of an In-Wall Housing unit. Repeat at the bottom with the Male Tip.



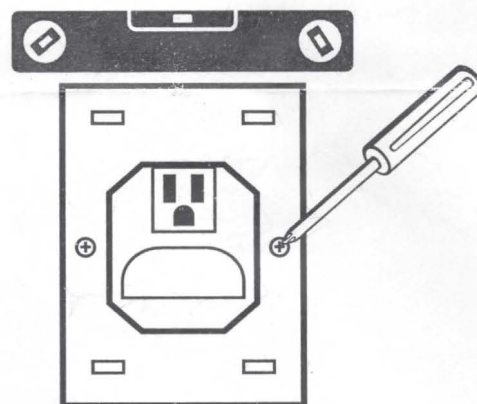
- 7** Snap on Female Crown over the Plug Tip and secure with screws. Repeat at the bottom with the Male Tip and Male Crown.



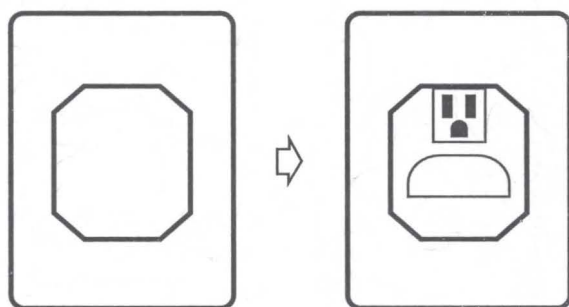
- 8** Fold in Dog Ears and slide Housing into wall. Repeat at the bottom with the Male Housing.



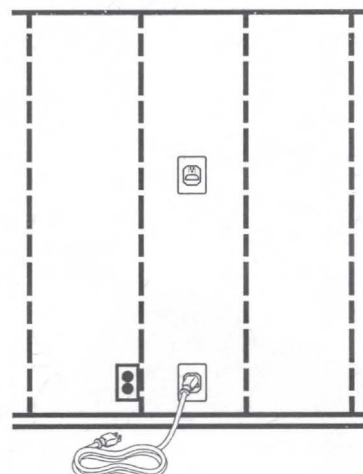
- 9** Level and screw Dog Ears until Housing is secure. Repeat at the bottom with the Male Housing.



- 10** Snap Housing Fascia onto the front of the Housing. Repeat at the bottom with the Male Housing.



- 11** Plug Extension Cord into the bottom device. Installation is now complete.



Helios, 460 Walker Street, Holly Hill, FL 32117
©2022 Ethereal Home Theatre LLC