



JLAB®
JBUDS
KEYBOARD

We love that you are rocking JLab!
We take pride in our products and fully stand behind them.



YOUR WARRANTY

All warranty claims are subject to JLab authorization and at our sole discretion. Retain your proof of purchase to ensure warranty coverage.



CONTACT US

Reach out to us at support@jlab.com or visit jlab.com/contact

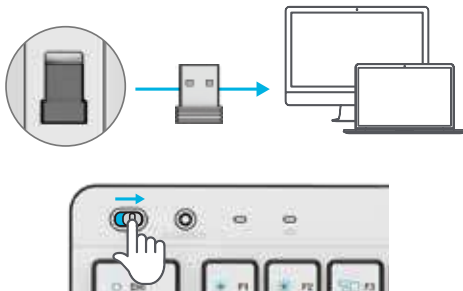
REGISTER TODAY

jlab.com/register

Product updates | How-to tips
FAQs & more

1 CONNECT WITH DONGLE

Install 2.4G USB dongle and switch keyboard on
JBuds Keys will auto connect



If connection is unsuccessful, hold Connect until purple LED flashes quickly. Unplug and re-plug dongle into computer.

2 CONNECT WITH BLUETOOTH

Quick Press CONNECT

Switch to preferred connection:

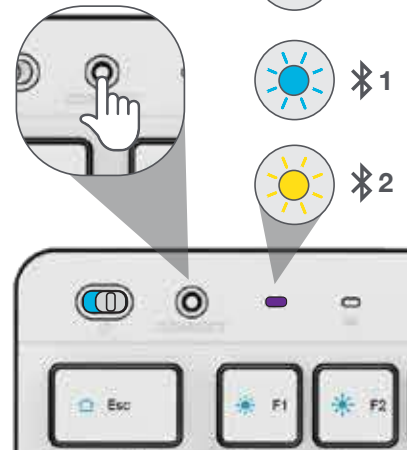
Purple = 2.4

Blue = 1

Yellow = 2

Press and hold CONNECT

LED will blink in pairing mode
Select "JLab JBuds Keys"
in device settings



3 KEYS

Fn + 1 / 2 / 3:

Quick connection switch



BATTERY

100-20%



less than 20%

**USB-C
Charge
Input**



Fn + F1-F12:

Shortcut keys
(see Shortcut Keys list)

Fn + Left Shift:

Lock/Unlock Fn keys

MEDIA DIAL

Vol +/- : Rotate

Play/Pause: Single press

Track Forward:

Double press

Track Back:

Press and hold



Fn + Q / W / E:

Switch Mac / Windows / Android layout

SHORTCUT KEYS

Fn +	MAC	PC	Android
Esc	N/A	Homepage	N/A
F1	Brightness -	Brightness -	Brightness -
F2	Brightness +	Brightness +	Brightness +
F3	Task Control	Task Control	N/A
F4	Show Applications	Notification Center	N/A
F5	Search	Search	Search
F6	N/A	Desktop	N/A
F7	Track Back	Track Back	Track Back
F8	Play/Pause	Play/Pause	Play/Pause
F9	Track Forward	Track Forward	Track Forward
F10	Mute	Mute	Mute
F11	Screenshot	Screenshot	N/A
F12	N/A	Calculator	N/A
Delete	Screen lock	Screen lock	Screen lock



Customize the JBuds Keys with
USB dongle + JLab Work App
jlab.com/software



[Shop products](#) | [Product alerts](#) | [Burn-in your headphones](#)

JLab Store + Burn-in Tool

