



User Manual

Smart Pet Feeder(support 2.4G/ 5G WiFi)



Products will be upgraded from time to time(including APP), please refer to the actual product!

Safety Instructions



Dispose of all packaging materials properly. Some items may be packed in plastic bags; these bags could cause suffocation. Keep them away from children and pets.



Do not immerse the base part in water at any time as it may damage electronic components like the control panel.



Suggest following the instruction in this user manual to assemble or disassemble the feeder.



Only use accessories recommended or sold by the manufacturer. The use of accessories not recommended or sold by the manufacturer may cause an unsafe condition.



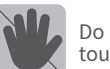
Examine the feeder after installation. Do not plug in if there is water on the power cable or plug.



This product uses one Li-Po Battery as a backup power supply. We recommend to use double power supply to ensure the normal use of the product.



Check the battery regularly. If do not use the battery for a long time, please take out it in advance.



Do not put your fingers into the food outlet or let your fingers touch the rotor.



Keep the feeder close to your router, make sure the network signal is good, it is ideal to make it within 5 meters without obstacles and walls. (Depending on the coverage of the router you are using)



Please do not use wet, canned or moist food; only put dry food into the food tank prevent from abnormal conditions even may including pet safety problems.

-01-

Warranty

◆1-Year Warranty

◆Lifetime Support

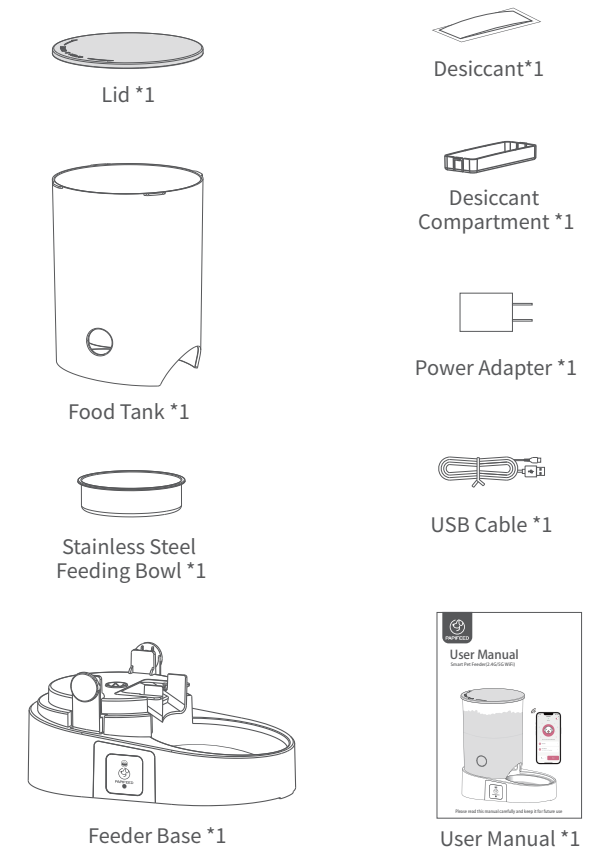
For guidance on product use and warranty extension, please contact our brand after-sales staff via email: service@papifeed.cn or call us at (1) 877-290-0617 (From Monday to Friday: 8 a.m.-5 p.m.)(PST) If any questions related to orders, please contact the seller through the shopping platform.

Specifications

Product Name	Smart Pet Feeder(2.4G/5G WiFi)
Suit For	Cat, Dog, Rabbit, Squirrel, Small Pets
Power	DC 5V Power Adapter, 1 x Li-Po Battery
Power Adapter	AC 100-240V Input, DC 5V Output
Rated Power	5W
Material	Eco-Friendly ABS
Product Size	277*181*287mm/10.9*7.1*11.3in
Product Weight	1.15kg/2.54lb
Product Capacity	4L/17Cup
Pet Food	Dry Food
Portion Size	About 15g/0.03lb One Portion (Varies due to density of pet food)

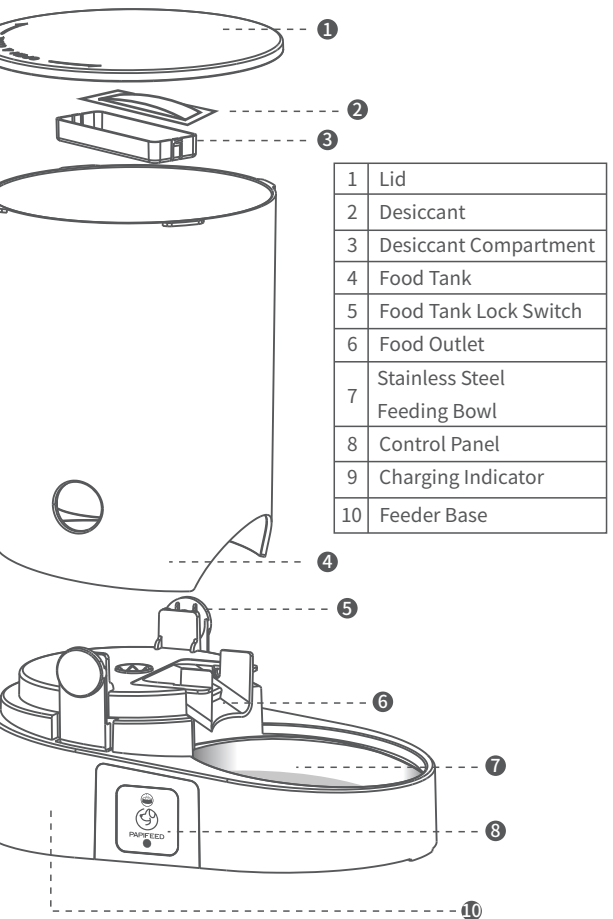
-02-

In the Box



-03-

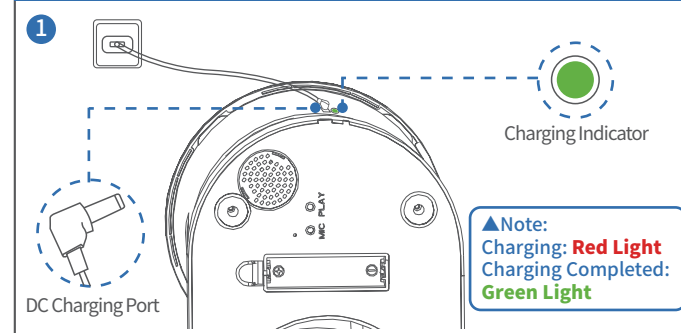
Product Overview



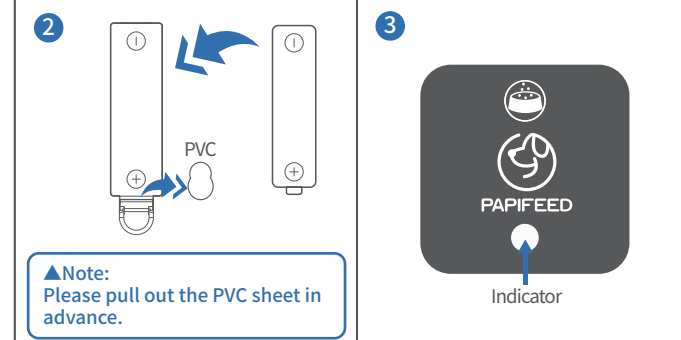
-04-

Installation

Step 1 Connecting Power



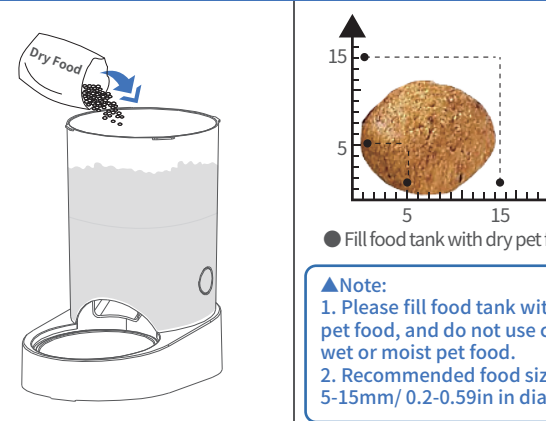
● Insert the 5V power adapter into the socket, plug in power cable of the feeder.
● Open the battery compartment at the bottom of the unit. Make sure there is a built-in Li-Po Battery(dual power supply is recommended for simultaneous use).



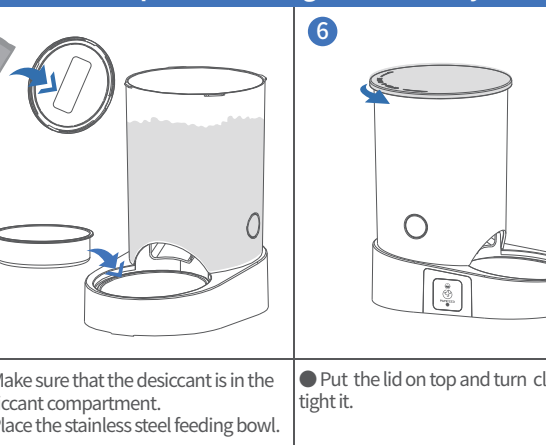
● Check whether the positive and negative battery terminals are correct as shown in the figure.

-05-

Step 2 Filling Food Tank

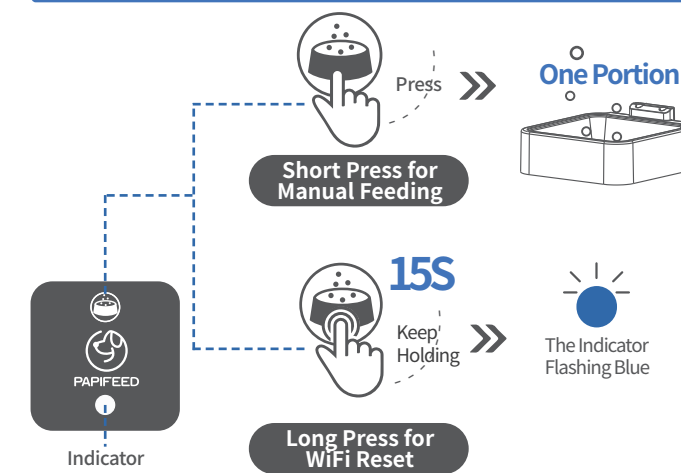


Step 3 Assembling the Food Tray



-06-

Buttons



Indicator Description

Indicator	Status
Blue Light Blinking	WiFi Pending Connection
Blue Light	WiFi Connected
Green Light	WiFi Disconnected
Red Light	Low Battery
Light Off (No Commands Within Two Minutes)	Sleep-screen Mode (Li-Po Battery Supply Only)

▲Note: When the indicator is blinking blue, the device is ready to connect WiFi. Please note that once start and during pairing, the indicator light is green. After the connection is successful, the green light turns to blue. At this time, the device is connected successfully.

-07-



Scan for more details
www.papifeedpet.com

THANK YOU FOR YOUR PREFERENCE FOR PAPIFEED
If you have any problems with our product, please feel free to contact us.

Tel: (1) 877-290-0617 (From Monday to Friday: 8 a.m.-5 p.m.)(PST)
Email: service@papifeed.cn



Tutorial Video

You can scan the **Tutorial Video** QR code to watch how to connect.



Tutorial Video

Install the APP & Log In

App Installation

Download and install the "Smart Life" App by scanning the QR code, or searching it on Google Play (Android)/ App Store (ios).



Smart Life

Sign up and log in

After opening the app, if you don't have an account, please register one. If you have already have, please log in directly.

Add the Device

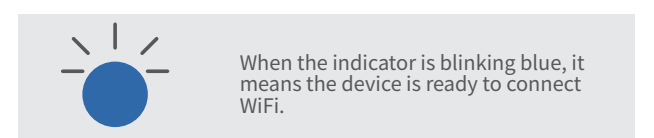


Note:
1. Make sure you have already turned the bluetooth and WiFi on before you try to connect the device.
2. One device can be attached to only one account at a time, but when you share your control in the app, the device can be controlled by multiple phones.

Add and Connect the Feeder

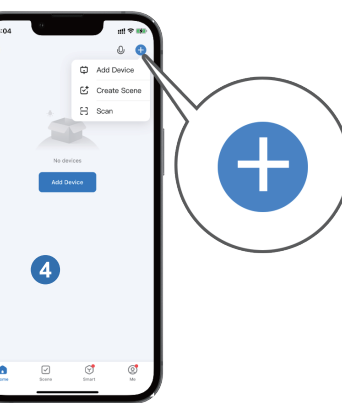


Connect and turn the power on



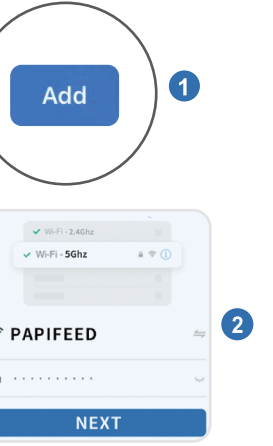
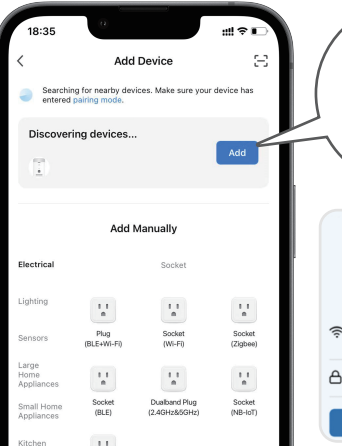
Note:
If the indicator is not blinking blue, please long press the button for 15 seconds to reset the device.

2 Please open the Smart Life APP → Tap the [+] in the upper right corner to add the device.

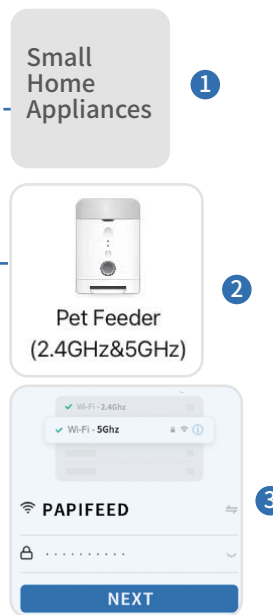
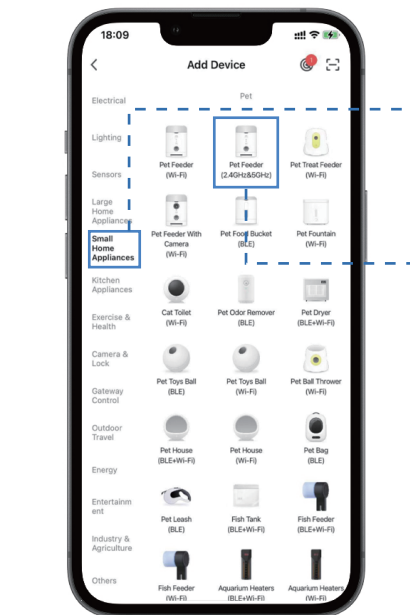


3 The feeder enters the pending connection state (the indicator light flashing blue), please follow the app prompts to operate.

Method One



Method Two



Function Introduction



Offline Notification
Share Device

Buzzer Switch:
ON/OFF

Next Feeding Schedule Reminder

Meal Plan:
Up to 10 feeding schedules can be set

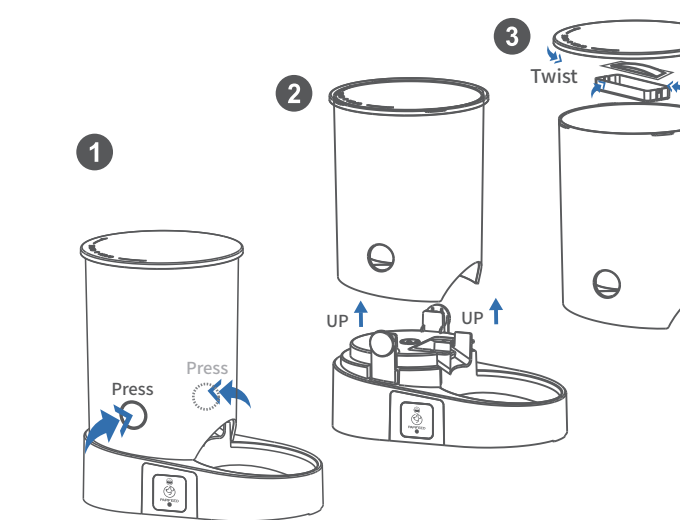
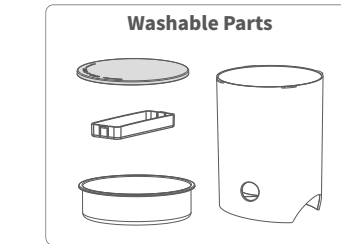
Feed Record:
View the feeding history

Number of Servings:
One click put out one portion of food(maximum 12 portions of food at one time)

Note:
After the external power supply is disconnected, the device's built-in battery will be powered for use. At this time, the used feeding schedule will continue. However, when using battery power only, it can't tap to feed within the app, adjust the buzzer switch, or set up a feeding schedule, so that dual power supply is recommend.

Cleaning & Care

We recommend to clean the feeder regularly for the health of your pet. The washable parts of the feeder are as follows: lid, desiccant compartment, food tank, stainless steel feeding bowl.



FAQ

Problem	Solution
Can't connect the feeder to WiFi	1) Keep the feeder and your phone close to your router, make sure the network signal is good.
	2) Reset the feeder and reconnect.
	3) Follow the APP's instructions or our tutorial video to add the feeder. There are more than one adding methods to choose from.
	4) When powered only by the battery (indicator light is green), WiFi connection is not possible. Please plug in power cable of the feeder.
	5) Contact our after-sales team via email for help.
WiFi connection is sporadic	1) Keep the feeder close to your router, make sure the network signal is good, it is ideal to make it within 5 meters without obstacles and walls. (Depending on the coverage of the router you are using).
	2) Make sure the power cord is properly connected, the indicator light should be blue at this point.
	3) Reset the feeder and reconnect.
Indicator light off	1) On battery power only, the indicator light will go off if there is no any command within two minutes.
	2) No power supply whatsoever.
Does the feeder dispense food when it is offline?	When offline and on battery power only, the feeding schedule will continue to feed according to the previous settings.
Why feed on the APP but no food dispensing from the feeder?	1) To check if the food tank got enough food.
	2) If the impellers have been rotated normally.(You can judge from the sound).
	3) Suggest to feed again for few more times to avoid the signal delay(Internet delay) cause for the troubles.

Problem

Problem	Solution
Timed tasks are not executed correctly	1) Make sure the feeder is not reset or powered off.
	2) Check if the feeder is offline, when normally connected, the feeder indicator is always on blue.
	3) Check whether the effective period of the timing task is set correctly.
	4) Check whether the time zone of the device is the same as your time zone. Online status, click - ⚙ Settings , check the time zone of the device.
	5) Reset the feeder and reconnect.
The feeder has disappeared from the home page	1) Make sure the feeder is successfully networked, the indicator light should be blue.
	2) Make sure the feeder is not connected by someone else, it is recommended to reset the feeder and connect it.

Reference for Meal & Portion Settings

Note:
1. Below is the recommended amount of food your pet needs by each meal.
2. One portion of this feeder is about 15g/0.03lb.



If the pet fail to eat up the previous programmde meal, please reduce the next meal portion.

- CAT -					
Age (Months)	1-2	2-4	4-6	6-8	8-12
Suggested Feed	20-30g	30-50g	50-70g	70-80g	80-90g
Weight (Months)	2-3kg	3-5kg	5-7kg	Pregnancy	Lactation Period
Suggested Feed	25-35g	35-55g	55-35g	70-110g	120-190g

- DOG -					
Dog Weight	Normal Activity	Increased Activity	Dog weight	Normal Activity	Increased Activity
2kg	39g	45g	22kg	250g	290g
4kg	66g	76g	24kg	267g	309g
6kg	89g	104g	26kg	274g	318g
8kg	111g	128g	28kg	290g	336g
10kg	131g	152g	30kg	305g	353g
12kg	150g	174g	32kg	320g	371g
14kg	178g	206g	34kg	335g	388g
16kg	197g	228g	36kg	350g	405g
18kg	197g	228g	38kg	364g	422g
20kg	233g	270g	40kg	379g	439g

100% After Sales Service

We provide one year warranty for this appliance. Please email our support team at service@papifeed.cn, if you have any questions, attach your order number and describe the problem you met in your email. We will get back to you within 24 hours. Also you can call us at **(1) 877-290-0617** (From Monday to Friday: 8 a.m.-5 p.m.)(PST)

