

CHEFMAN®

@mychefman



www.chefman.com

©CHEFMAN 2023

CHEFMAN®

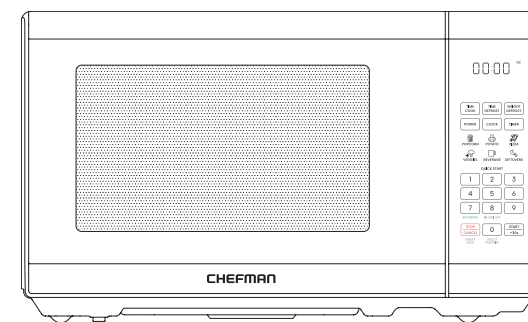
Countertop Classic
Compact

MICROWAVE

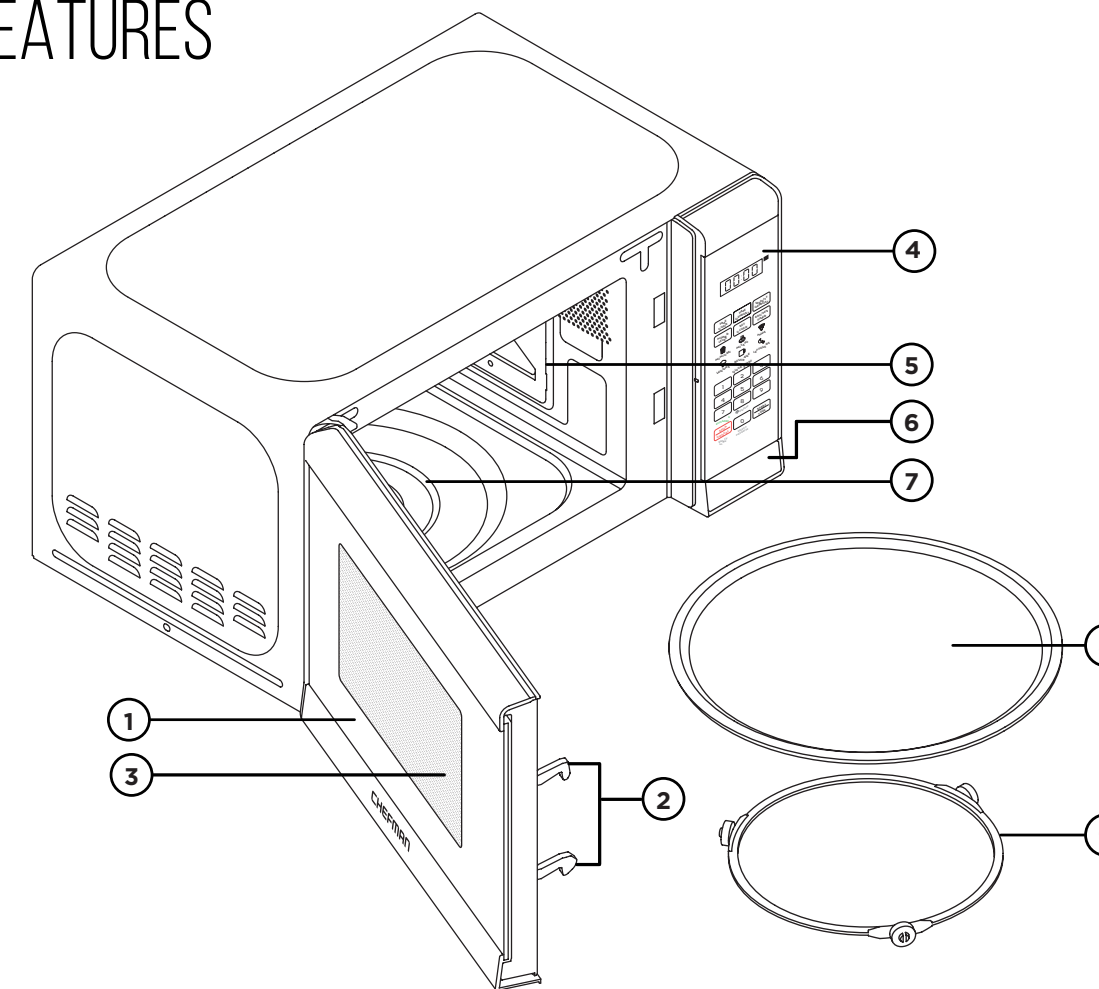
QUICK START GUIDE

- Features
- Control Panel
- Before First Use
- Countertop Installation
- Turntable Installation
- Setting the Clock
- Lock Mode
- Operating Instructions
- Cleaning and Maintenance

RJ55-SS-7



FEATURES

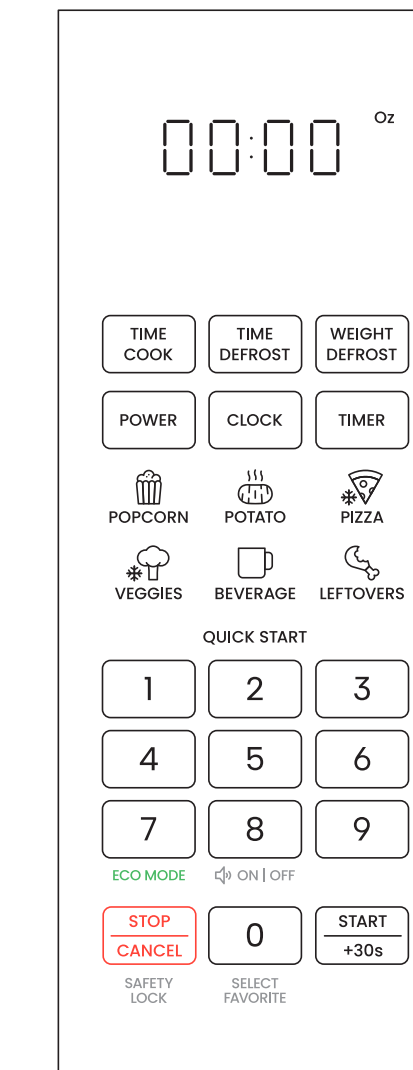


1. Door Assembly
2. Safety Interlock System
3. Window

4. Display
5. Interior Light
6. Door Button

7. Turntable Shaft
8. Glass Turntable
9. Turntable Support Ring

CONTROL PANEL



Clock/Timer Counts down to the end of an active cooking cycle. Displays time of day in Standby Mode.

TIME COOK Button Press to set cooking time.

DEFROST Buttons Press to defrost by time or by weight (see User Guide for details).

POWER Button Press to set power level from 0 to 10 (Default power is 100%).

CLOCK Button Press to set microwave's clock.

TIMER Button Press to set a timer for kitchen tasks (with no microwaving).

Preset Icons Use to select preset cooking functions for six popular foods.

Number Pad Use to manually enter cooking time or set clock or kitchen timer. Numbers 1 through 9 can also be used for 1-touch quick cooking.

STOP/CANCEL Button Use to stop active cooking or return to Standby Mode.

0/Select Favorites Button The Number Pad's "0" button can also be used to program and select a stored favorite cooking cycle.

START/+30 SEC Button Use to start cooking after selecting a preset or entering time manually OR to add 30 seconds of cooking at any time.

BEFORE FIRST USE

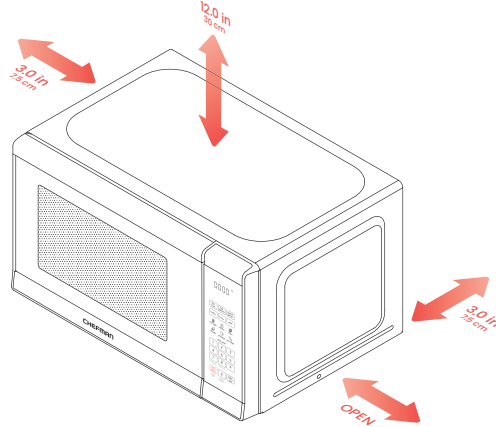
1. Remove all packaging materials, and read and remove all removable stickers. (Leave the rating label on the unit.) Be sure that all parts and accessories are accounted for before throwing away any packaging.
2. Gently wipe the exterior and interior of the oven with a clean, damp cloth and dry thoroughly. **NOTE:** Do not use abrasive cleansers, which may damage the finish. Never immerse the unit in water or other liquids.
3. Hand wash the glass turntable and dry thoroughly.

COUNTERTOP INSTALLATION

1. Place the microwave on a firm, level surface with the following clearance for intake and outtake openings:
 - right side of microwave must be open
 - a minimum clearance of 3 inches on the sides and behind
 - a minimum clearance of 12 inches between the top and any upper cabinets
 - the minimum installation height is 3 feet

NOTE: Blocking openings can damage the oven.

2. Place the oven far away from radios and TV. Operation of the microwave oven may cause interference with your radio or TV.
3. Plug your oven into a standard household outlet. Be sure the voltage and the frequency match that on the rating label.
WARNING: Do not install the oven over a range cooktop or other heat-producing appliance. This could damage the oven and void the warranty.



TURNTABLE INSTALLATION

1. Set the turntable support in the oven interior so the wheels make contact with the oven floor.
2. Place the glass turntable over the support, aligning the hub on the underside of the turntable with the turntable shaft in the oven floor. Never place the turntable upside down.

SETTING THE CLOCK

1. Press CLOCK once. 00:00 will display.
2. Enter the current time using the keypad (1:00 to 12:59).
3. Press CLOCK again to finish setting.

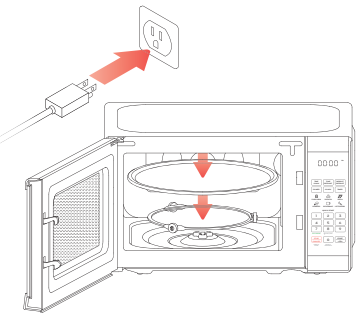
LOCK MODE

To put the unit in childproof Lock Mode, press and hold the STOP/CANCEL button for 3 seconds. The unit will give a long beep. In Lock Mode the screen displays as [] , and the microwave cannot be started. To turn off the Lock Mode, press and hold the STOP/CANCEL button for 3 seconds again.

OPERATING INSTRUCTIONS

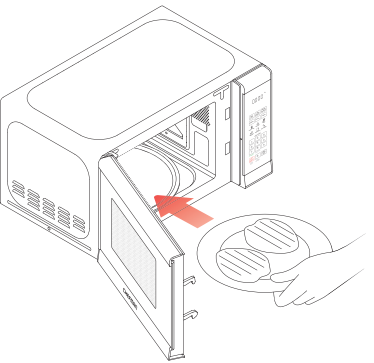
STEP 1

Ensure the microwave is plugged in and the turntable properly installed.



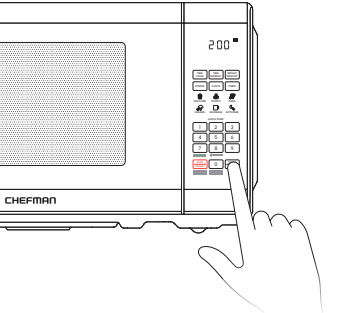
STEP 2

Place your food on the turntable in a microwave-safe vessel and close the door.



STEP 3

Press any of the keypad numbers 1 through 9 for instant, one-touch cooking at 100% power for the specified number of minutes. There is no need to press START. Alternatively, press TIME COOK and use the keypad to enter the cooking time, then press POWER to adjust the power level if desired (from 0 to 10), then press START.



STEP 4

Opening the door or pressing STOP/CANCEL pauses cooking while the unit is operating. Close the door and press START to resume, or press STOP/CANCEL again to return to Standby Mode.

STEP 5

To add time during cooking, press +30 SEC (same as the START button) as many times as needed.

STEP 6

After the timer finishes counting down, the unit will beep five times. Open the door, remove the food, and enjoy!

CLEANING AND MAINTENANCE

1. Periodically wipe down the interior of the microwave with a damp cloth.
2. If food splatters on the interior or on the glass turntable, clean both with mild soap and a damp cloth. The turntable is also top-rack dishwasher safe.
3. Do not immerse the unit in water. The unit and turntable support ring are not dishwasher safe.