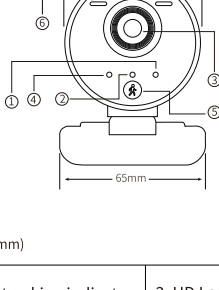
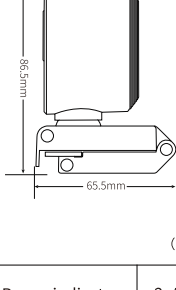


Webcam

User Manual



(unit:mm)

1. Power indicator	2. Auto tracking indicator	3. HD Lens
4. Signal indicator	5. Auto tracking button	6. MIC

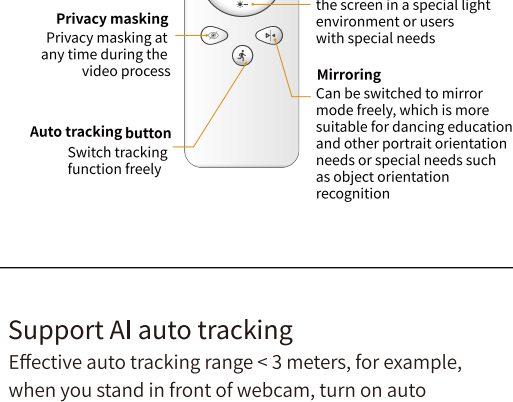
Specifications

Image Sensor	2MP
Effective auto tracking range	< 3 meters
Remote control distance	< 10 meters
Lens	3.6mm
Encoding format	MJPEG/H.264
Video resolution	1920*1080
Video frame rate	30FPS
Microphone shape	Built-in microphone
Pickup distance	5 meters
Audio encoding format	PCM
Audio bit rate	32KBP
Size	65*65.5*86.5mm
Power supply	USB direct power DC5V
Installation method	Can be placed horizontally on TV, TV cabinet

Multi-function Remote Control

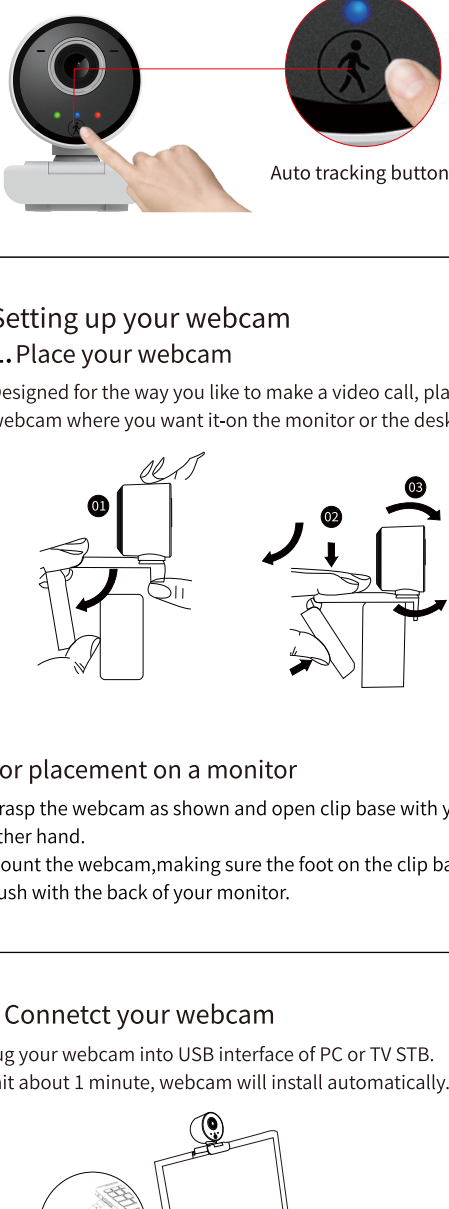
There are 5 functions collected in one remote control as follows:

- * AI auto tracking On/Off
- * Manually rotate left/right
- * One-click Privacy mask
- * Brightness adjustment
- * Mirroring



Support AI auto tracking

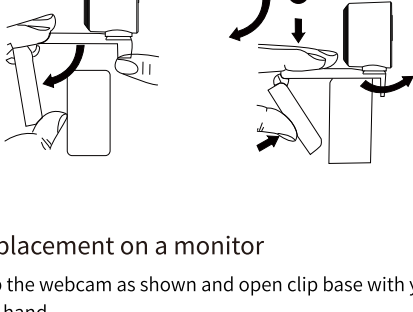
Effective auto tracking range < 3 meters, for example, when you stand in front of webcam, turn on auto tracking button, they will track you auto when you move.



Setting up your webcam

1.Place your webcam

Designed for the way you like to make a video call, place the webcam where you want it-on the monitor or the desktop.

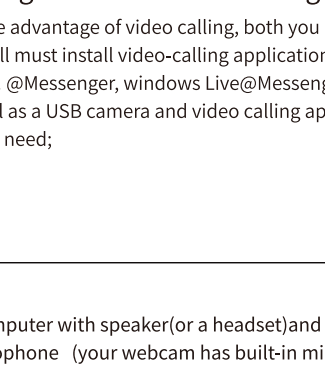


For placement on a monitor

Grasp the webcam as shown and open clip base with your other hand.
Mount the webcam,making sure the foot on the clip base is flush with the back of your monitor.

2.Connetct your webcam

Plug your webcam into USB interface of PC or TV STB.
Wait about 1 minute, webcam will install automatically.



Getting start with video calling

To take advantage of video calling, both you and the person you call must install video-calling application such as Skype, Yahoo! @Messenger, windows Live@Messenger or Gmail.
As well as a USB camera and video calling application,both callers need;

- ➡ A computer with speaker(or a headset)and a microphone (your webcam has built-in microphone);
- ➡ A broadband Internet connection(e.g. DSL, T1 or cable);
- ➡ Please check your preferred video calling application requirements.(Requirements may vary between different applications but usually a minimum of 2Mbps upload speed is required);

Q&A:

Q:How do I know if my camera is recognized by the operating system?

A: Connect the camera in any USB2.0/3.0 port. Once the camera is connected, it takes few more moments before the camera is recognized. To ensure the camera has installed correctly, check the following;

Under Control Panel>System and Security>Device Manager.

Q: How do I know if my video calling application can use my webcam?

A: All video application have an option setting to review the audio and video device. Using the video application review the followings:

The Audio selection to ensure the USB2.0 camera Microphone is selected.

If not change the selection to the USB2.0 camera.

The Video selection to ensure the USB2.0 camera is selected.

If not change the selection to the USB2.0 camera.