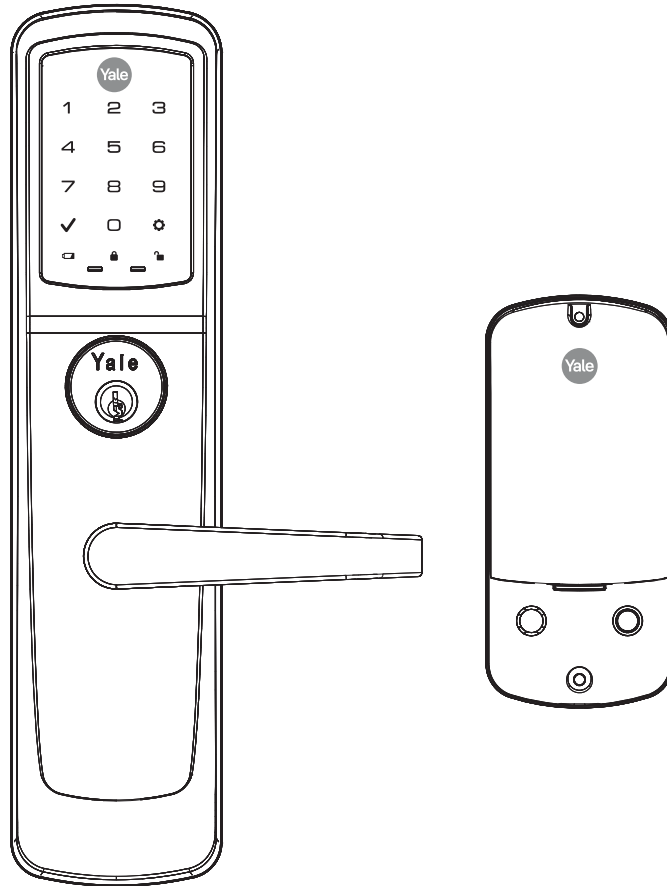




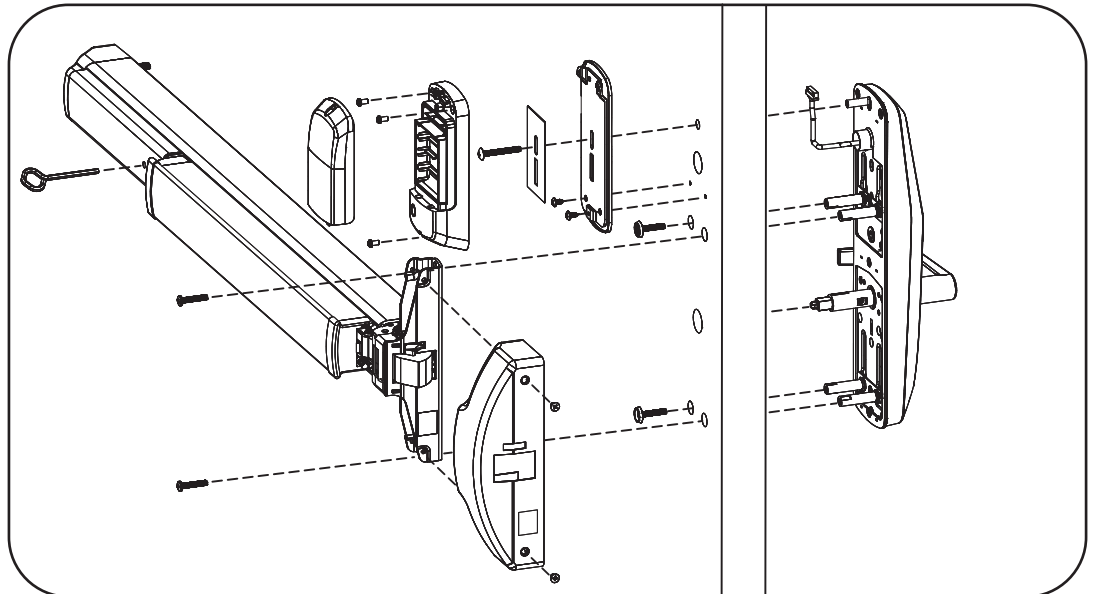
nexTouch™ Keypad Access Exit Trim Lock Touchscreen and Push Button Installation and Programming Instructions



WARNING

This product can expose you to lead which is known to the state of California to cause cancer and birth defects or other reproductive harm. For more information go to www.P65warnings.ca.gov.

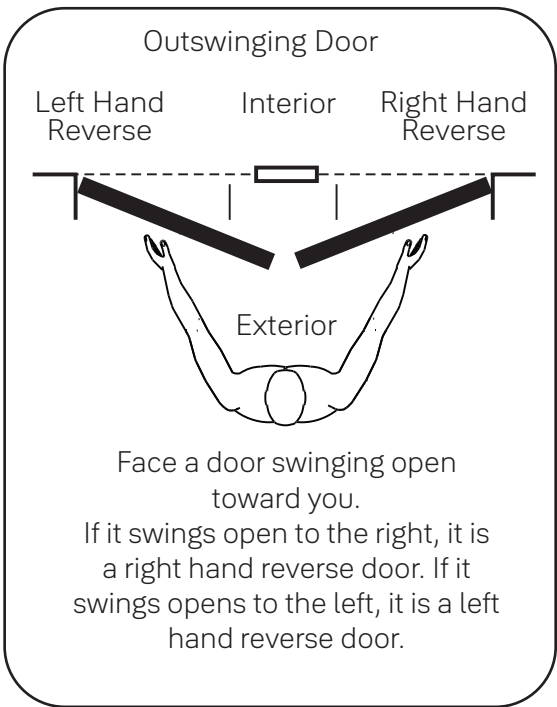
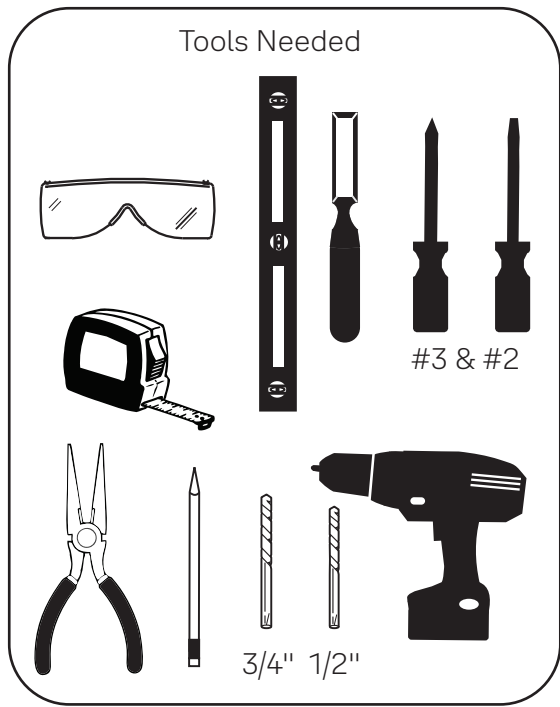
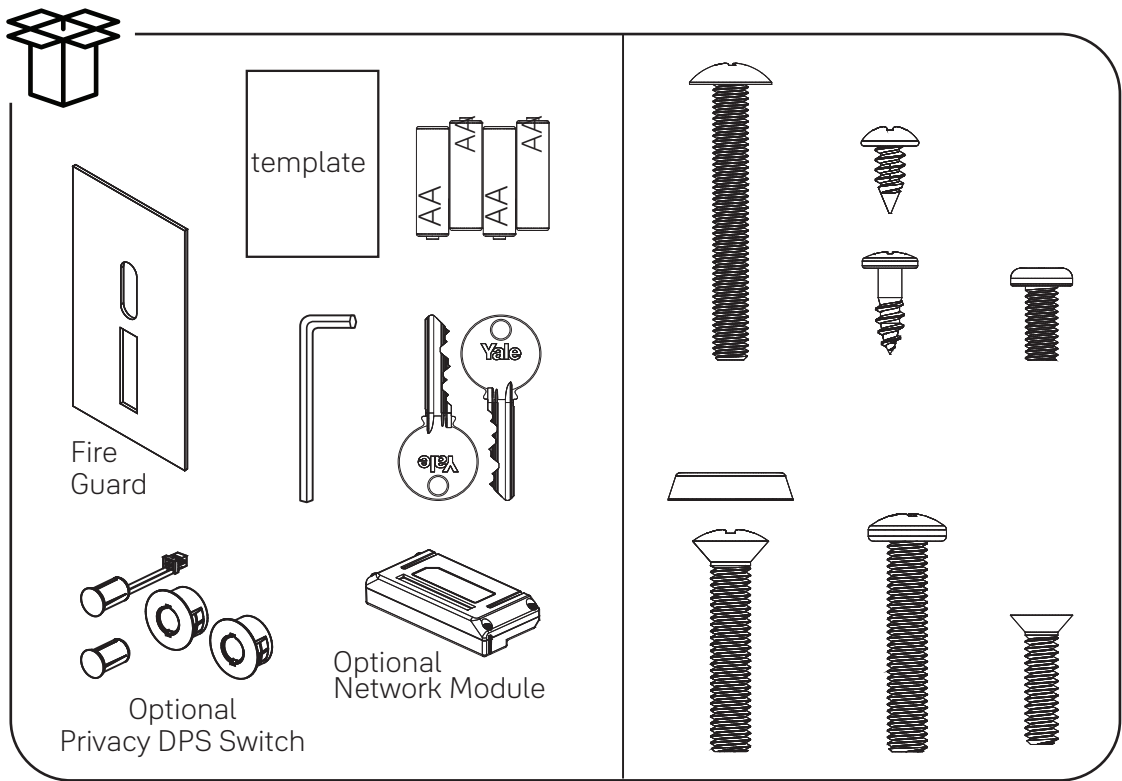
08/2018



Retrofitting or modifying this product may impact fire rating, safety features and warranty.
Consult with code specifications to ensure compliance with all codes and ratings.



Before You Begin

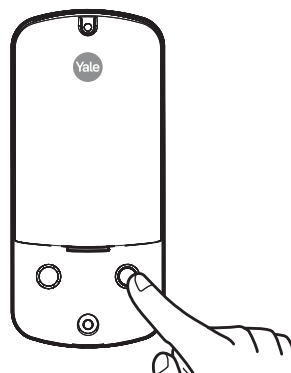
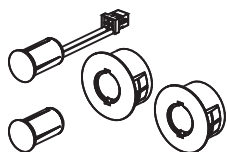


0 optional

Door Position Switch Option

Privacy DPS Switch

With Door Position Switch installed and door closed, all keypad functions can be disabled by Privacy Button.



1

Prepare Door

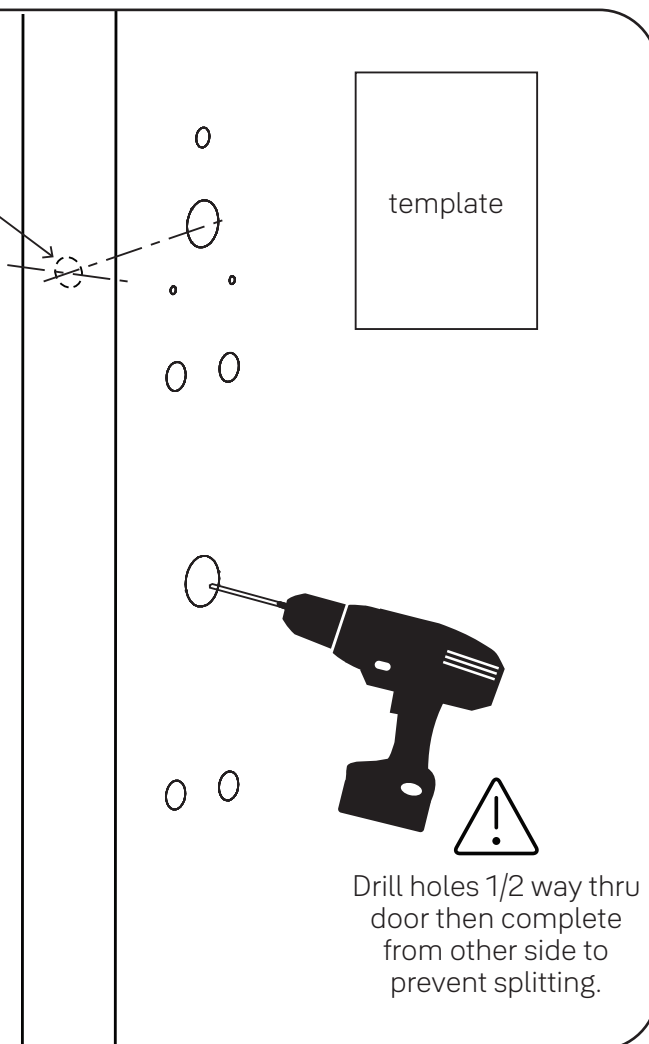
DPS Option
for Privacy Function

Wood Door:
3/8" Dia. Thru to
Hole in Door Face

*Metal Door:
3/4" Dia. Thru to
Hole in Door Face



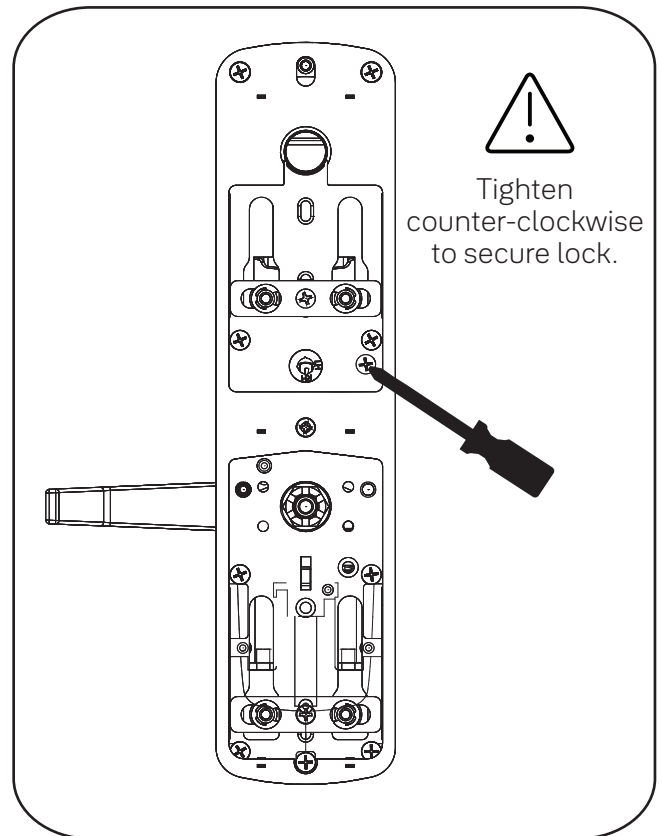
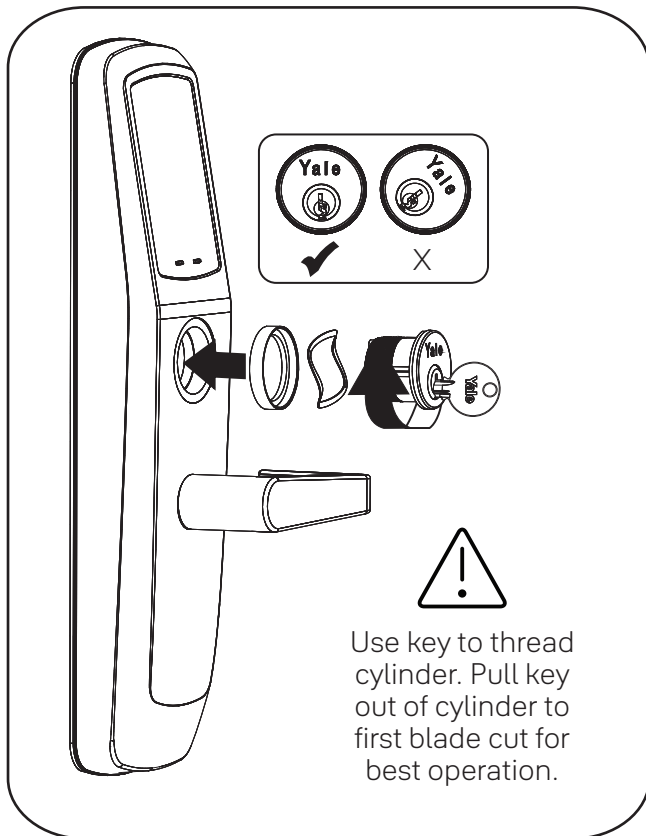
***Metal Door Installations**
Supplied plastic collar
MUST be installed for DPS
to function properly.



Drill holes 1/2 way thru
door then complete
from other side to
prevent splitting.

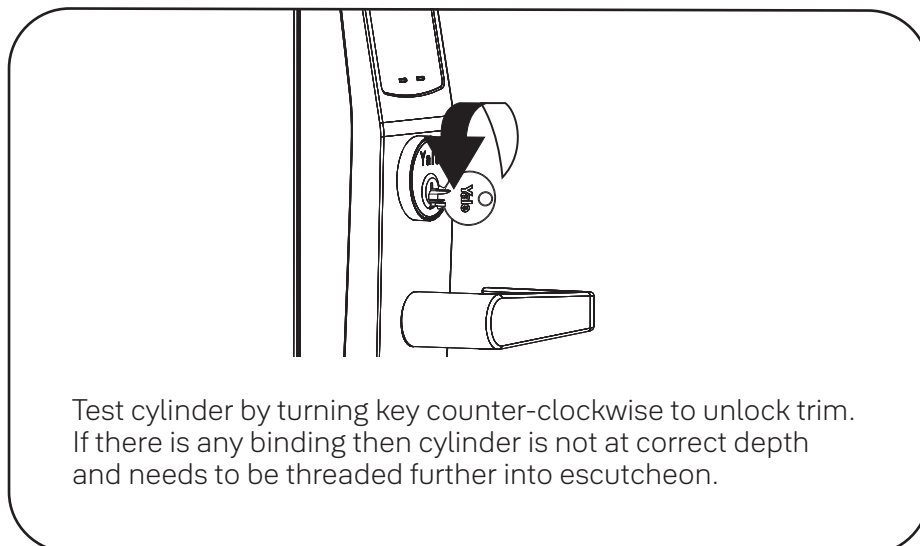
2

Install Cylinder



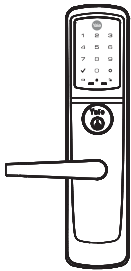
⚠ If using cylinder other than 1-1/8", a new collar must be used that is sized appropriately for cylinder length.

Test Cylinder

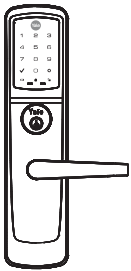


3

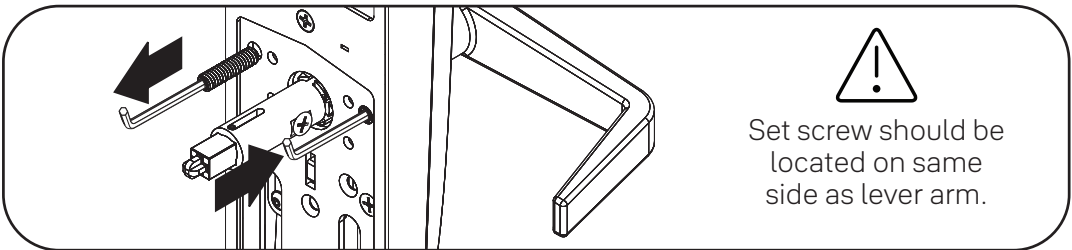
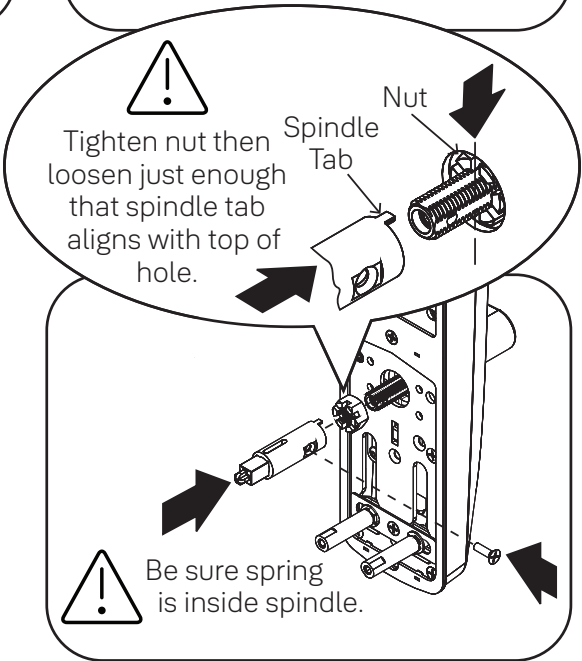
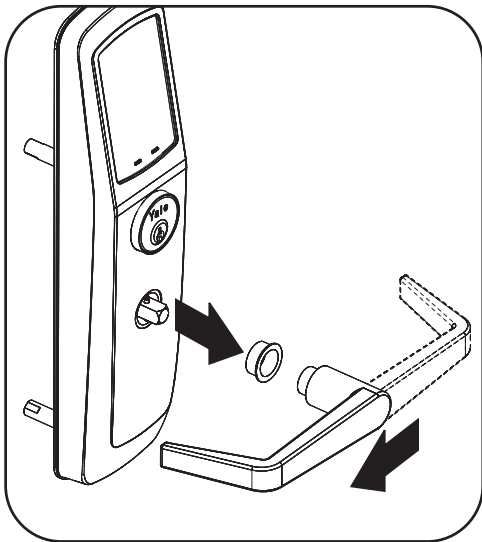
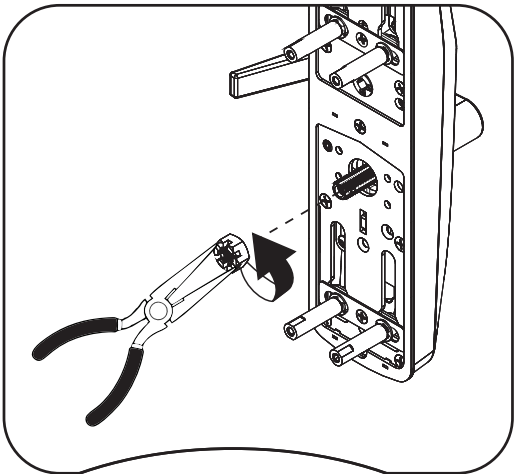
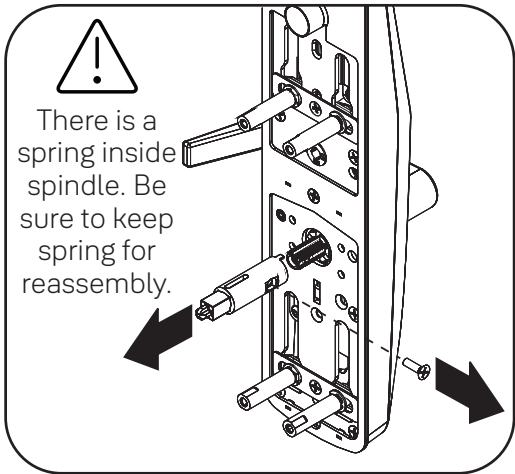
Change Hand of Trim (if necessary)



Left Hand Reverse

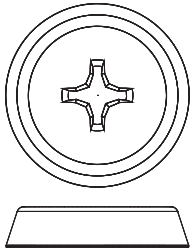


Right Hand Reverse





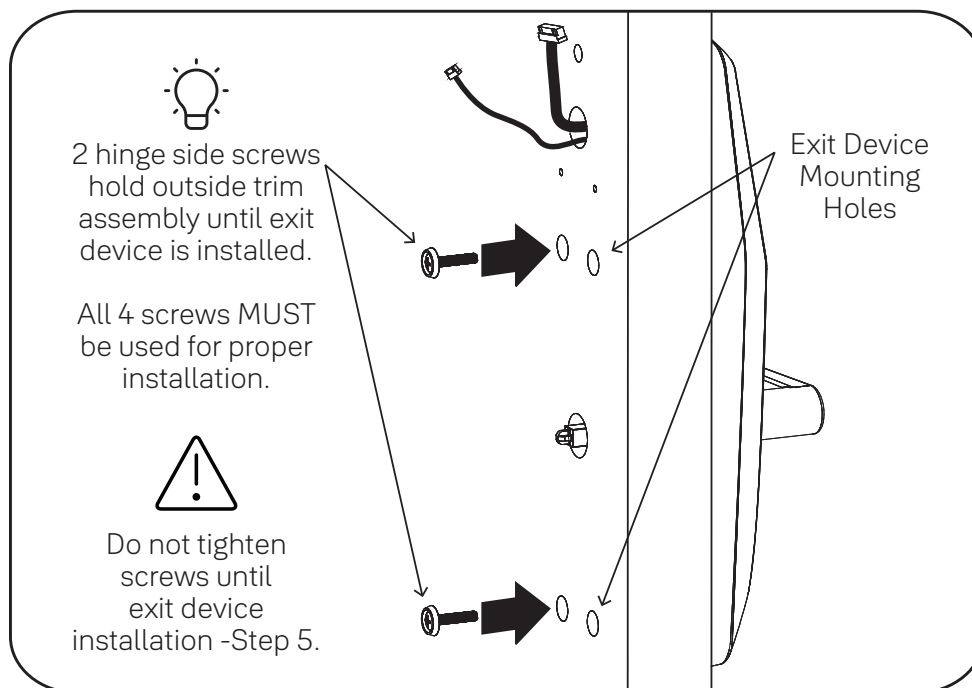
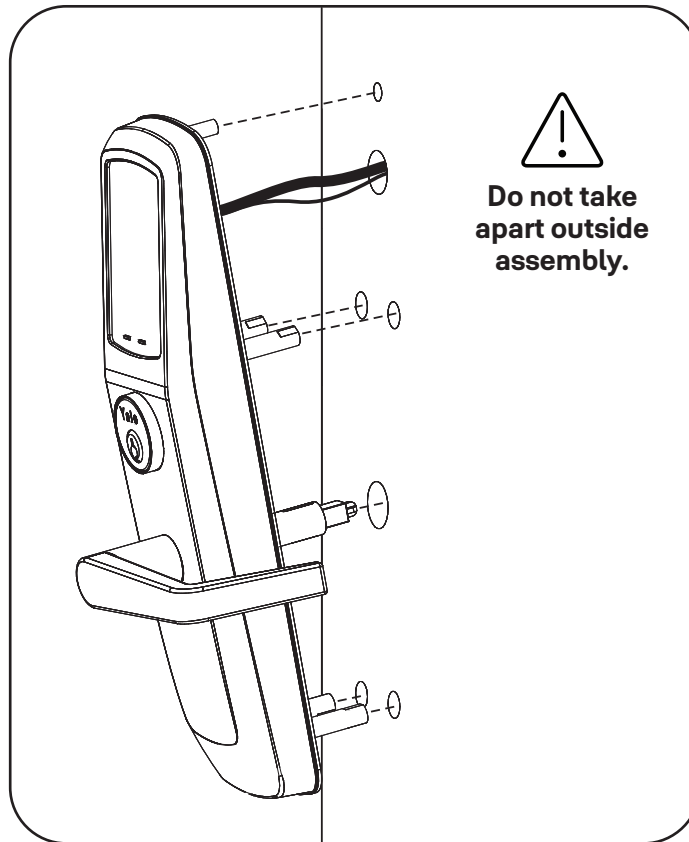
Install Outside Trim Assembly



#10-32 x 1" OHPMS

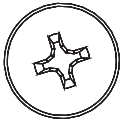


x2

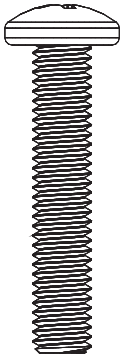


5

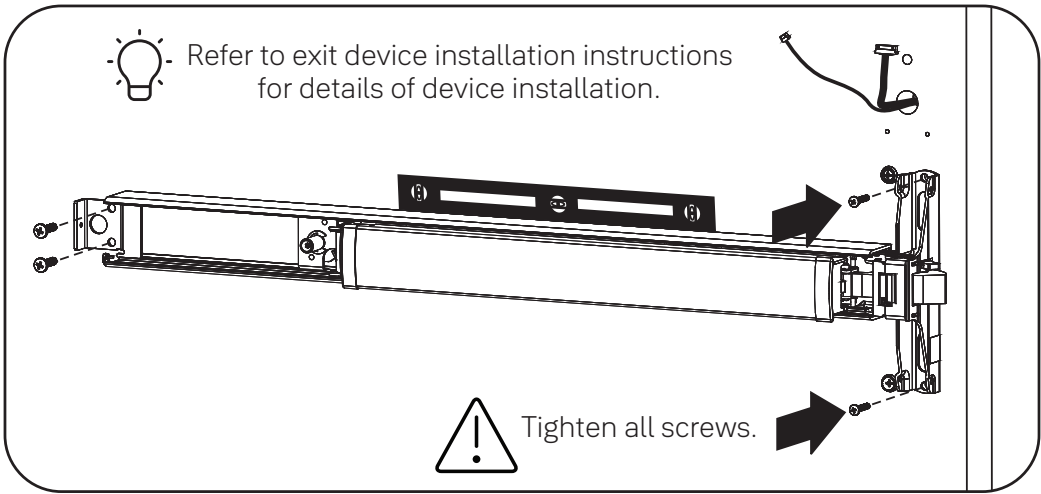
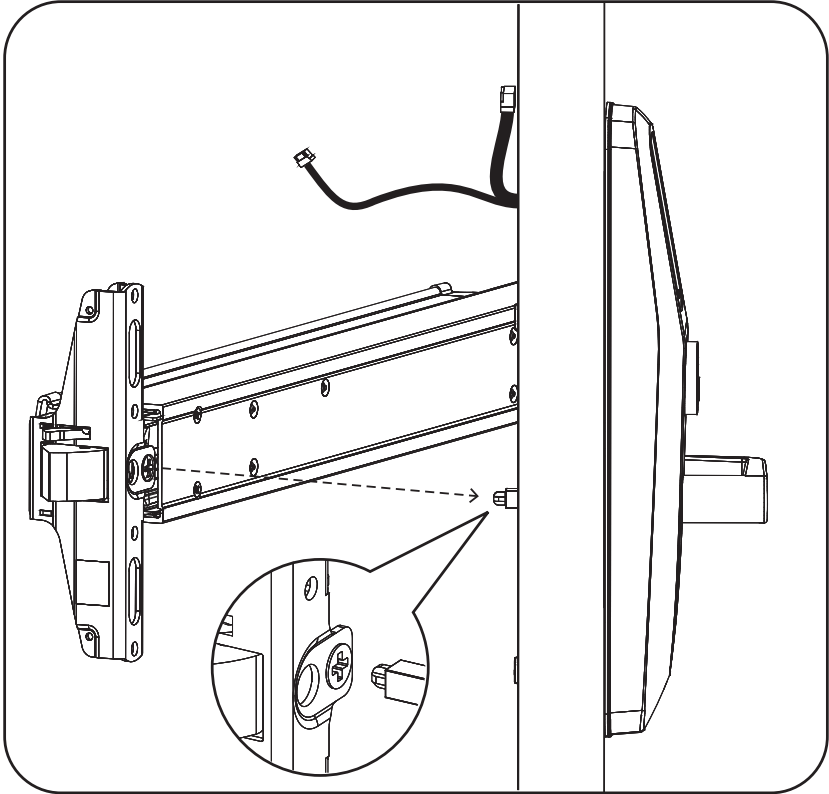
Install Exit Device



#10-32 x 1" PHMS



x2



Test Mechanical Lock Function by Key, Lever and Keypad

6

Install Strike and Optional DPS



#10-24 PFHMS



x3

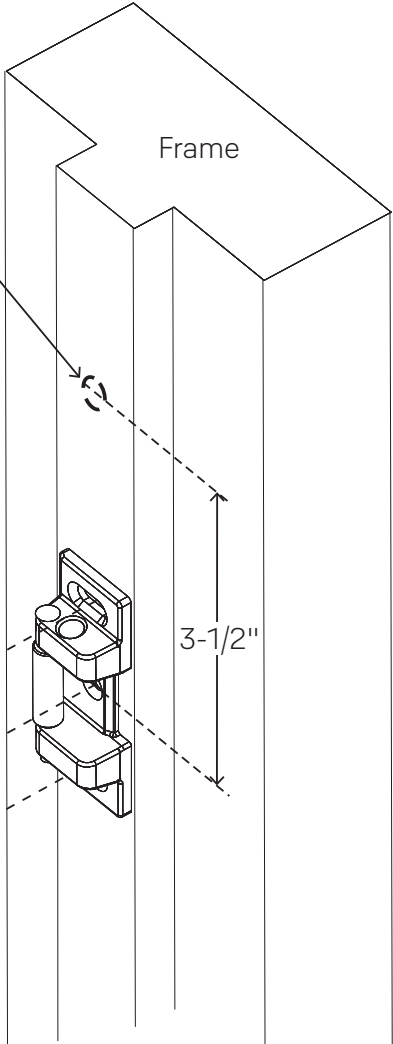
DPS Option
for Privacy Function

*Metal Frame:
3/4" Dia. x 1"

See Instructions with DPS Kit



*Supplied plastic collar **MUST**
be installed for DPS to
function properly.



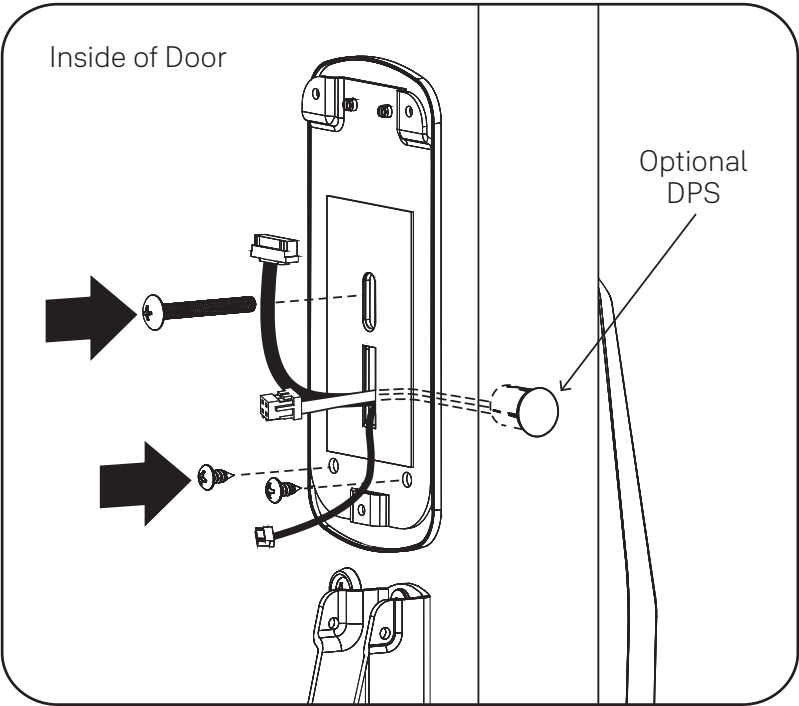
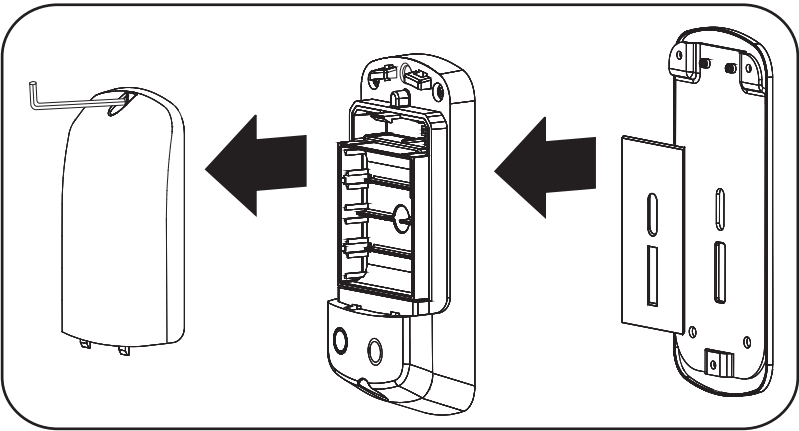
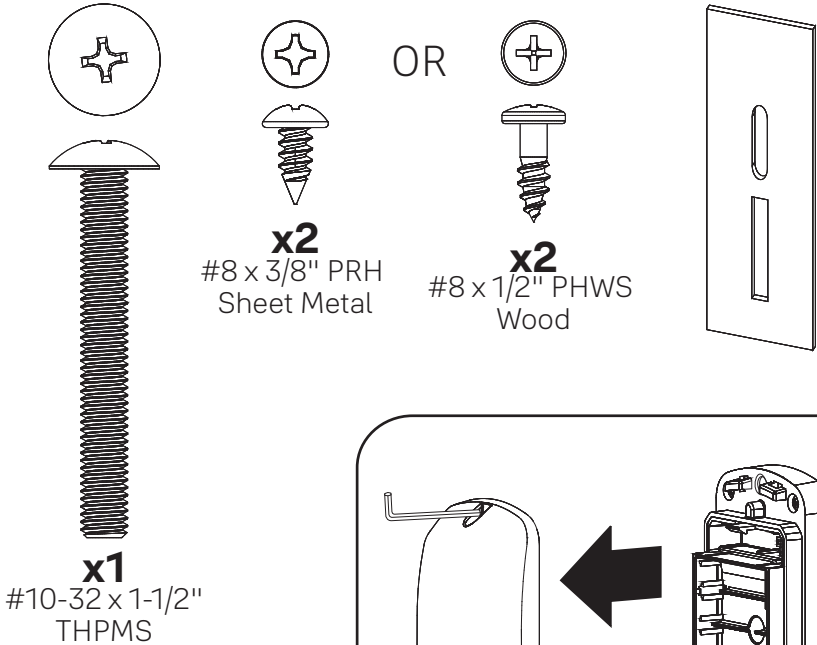
Strike must be centered with exit device bolt. For
proper engagement, door should remain latched
and not rattle when pushed, pulled or shaken in/out.

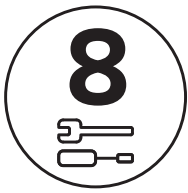


Refer to exit device installation instructions
for details of strike installation.

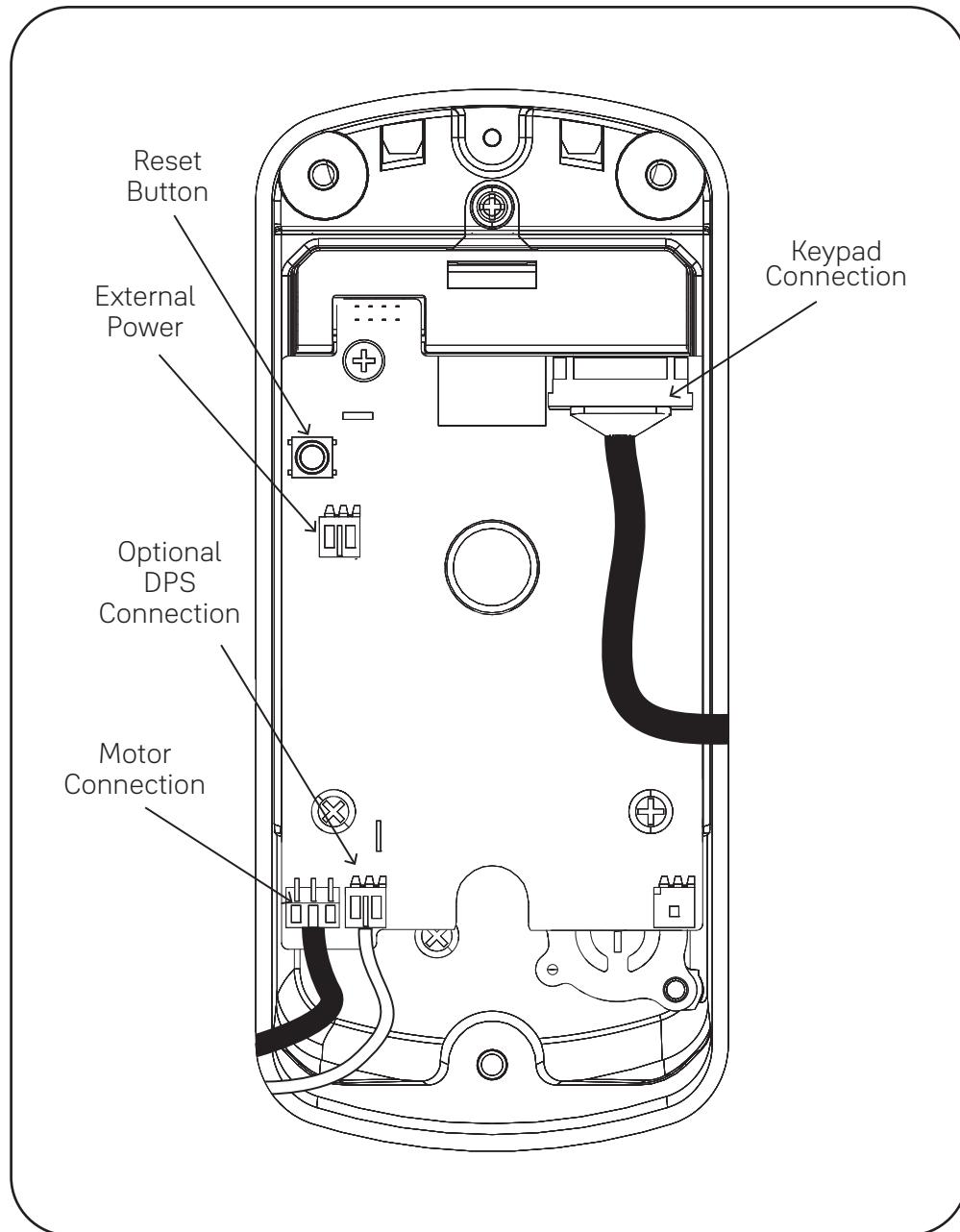
7

Install Inside Mounting Plate





Attach Cables to Inside Lock

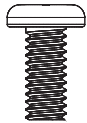




Install Inside Lock



#8-32 x 5/16" PHMS



x3

